

Product datasheet for PH300062

LMCD1 (NM_014583) Human Mass Spec Standard

Product data:

Product Type:	Mass Spec Standards
Description:	LMCD1 MS Standard C13 and N15-labeled recombinant protein (NP_055398)
Species:	Human
Expression Host:	HEK293
Expression cDNA Clone or AA Sequence:	RC200062
Predicted MW:	40.8 kDa
Protein Sequence:	>RC200062 protein sequence Red=Cloning site Green=Tags(s)

MAKVAKDLNPGVKKMSLGQLQSARGVAACLGCKGTCSGFEPHSWRKICKSCKCSQEDHCLTSDLEDDRKIG
RLLMDSKYSTLTARVKGGDGIRIYKRNRMIMTNP IATGKDPTFTDITYEWAPPGVTQKLGQYMELIPKE
KQPVTGTGEGAFYRRRQLMHQLPIYDQDPSRCRGLLENELKLMEEFVKQYKSEALGVGEVALPGQGGLPKE
EGKQQEKPEGAETTAATTNGSLSDPSKEVEYVCELCKGAAPPDSPVVYSDRAGYNKQWHPTCFVCAKCE
PLVDLIYFWKDGAPWCGRHYCESLRPRCSGCDEIIFAEDYQRVEDLAWHRKHVCEGCEQLLSGRAYIVT
KGQLLCPTCSKSKRS

TRTRPLEQKLI SEEDLAANDILDYKDDDDKV

Tag:	C-Myc/DDK
Purity:	> 80% as determined by SDS-PAGE and Coomassie blue staining
Concentration:	>0.05 µg/µL as determined by microplate BCA method
Labeling Method:	Labeled with [U- ¹³ C ₆ , ¹⁵ N ₄]-L-Arginine and [U- ¹³ C ₆ , ¹⁵ N ₂]-L-Lysine
Buffer:	25 mM Tris-HCl, 100 mM glycine, pH 7.3
Storage:	Store at -80°C. Avoid repeated freeze-thaw cycles.
Stability:	Stable for 3 months from receipt of products under proper storage and handling conditions.
RefSeq:	NP_055398
RefSeq Size:	1757
RefSeq ORF:	1095
Locus ID:	29995
UniProt ID:	Q9NZU5

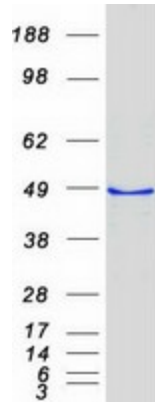


[View online »](#)

Cytogenetics: 3p25.3

Summary: This gene encodes a member of the LIM-domain family of zinc finger proteins. The encoded protein contains an N-terminal cysteine-rich domain and two C-terminal LIM domains. The presence of LIM domains suggests involvement in protein-protein interactions. The protein may act as a co-regulator of transcription along with other transcription factors. Alternate splicing results in multiple transcript variants of this gene. [provided by RefSeq, May 2013]

Product images:



Coomassie blue staining of purified LMCD1 protein (Cat# [TP300062]). The protein was produced from HEK293T cells transfected with LMCD1 cDNA clone (Cat# [RC200062]) using MegaTran 2.0 (Cat# [TT210002]).