

Product datasheet for PH300061

NDUFA8 (NM_014222) Human Mass Spec Standard

Product data:

Product Type:	Mass Spec Standards
Description:	NDUFA8 MS Standard C13 and N15-labeled recombinant protein (NP_055037)
Species:	Human
Expression Host:	HEK293
Expression cDNA Clone or AA Sequence:	RC200061
Predicted MW:	20.1 kDa
Protein Sequence:	>RC200061 protein sequence Red =Cloning site Green =Tags(s) MPGIVELPTLEELKVDEVKISSAVLKAAAHHYGAQCCKPNKEFMLCRWEEKDPRRCLEEGKLVNKCALDF FRQIKRHCAEPFTEYWTCIDYTGQQLFRHCRKQQAQKDFDECVLDKLGWVRPDLGELSKVTKVKTDRPLPEN PYHSRPRPDPSPPEIEGDLQPATHGSRFYFWTK TR TRPLEQK L ISEEDLAAND I L DY KDDDDK V
Tag:	C-Myc/DDK
Purity:	> 80% as determined by SDS-PAGE and Coomassie blue staining
Concentration:	>0.05 µg/µL as determined by microplate BCA method
Labeling Method:	Labeled with [U- 13C6, 15N4]-L-Arginine and [U- 13C6, 15N2]-L-Lysine
Buffer:	25 mM Tris-HCl, 100 mM glycine, pH 7.3
Storage:	Store at -80°C. Avoid repeated freeze-thaw cycles.
Stability:	Stable for 3 months from receipt of products under proper storage and handling conditions.
RefSeq:	NP_055037
RefSeq Size:	859
RefSeq ORF:	516
Synonyms:	CI-19KD; CI-PGIV; MC1DN37; PGIV
Locus ID:	4702
UniProt ID:	P51970



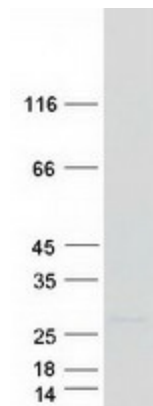
[View online »](#)

Cytogenetics: 9q33.2

Summary: The protein encoded by this gene belongs to the complex I 19 kDa subunit family. Mammalian complex I is composed of 45 different subunits. This protein has NADH dehydrogenase activity and oxidoreductase activity. It plays an important role in transferring electrons from NADH to the respiratory chain. The immediate electron acceptor for the enzyme is believed to be ubiquinone. Alternative splicing of this gene results in multiple transcript variants encoding different isoforms. [provided by RefSeq, Dec 2015]

Protein Pathways: Alzheimer's disease, Huntington's disease, Metabolic pathways, Oxidative phosphorylation, Parkinson's disease

Product images:



Coomassie blue staining of purified NDUFA8 protein (Cat# [TP300061]). The protein was produced from HEK293T cells transfected with NDUFA8 cDNA clone (Cat# [RC200061]) using MegaTran 2.0 (Cat# [TT210002]).