

Product datasheet for PH300056

PPP2R1A (NM_014225) Human Mass Spec Standard

Product data:

Product Type:	Mass Spec Standards
Description:	PPP2R1A MS Standard C13 and N15-labeled recombinant protein (NP_055040)
Species:	Human
Expression Host:	HEK293
Expression cDNA Clone or AA Sequence:	RC200056
Predicted MW:	65.3 kDa
Protein Sequence:	>RC200056 protein sequence Red=Cloning site Green=Tags(s)

MAAADGDDSLYPIAVLIDELRNEDVQLRLNSIKKLSTIALALGVERTRSELLPFLTDTIYDEDEVLLALA
EQLGFTTTLVGGPEYVHCLLPPLLESLATVEETVVRDKAVESLRAISHEHSPSDLEAHFVPLVKRLAGGDW
FTSRTSACGLFSVCYPRVSSAVKAELRQYFRNLCSDDTPMVRRAAASKLGEFAKVELDNVKSEIIPMFS
NLASDEQDSVRLLAVEACVNIAQLLPQEDLEALVMPTLRQAAEDKSWRVRYMVADKFTLQKAVGPEITK
TDLVPAFQNLMKDCEAEVRAAASHKVKEFCENLSADCRENVIMSQILPCIKELVSDANQHVKASALASVIM
GLSPILGKDNTIEHLLPLFLAQLKDECPEVRLNIISNLDVCVNEVIGIRQLSQSLLPAIVELAEDAKWRVR
LAIIEYMPLLAGQLGVEFFDEKLNLCMAWLVDHVYAIREAATSNLKKLVEKFGKEWAHATIIPKVLAMS
GDPNYLHRMTTLFCINVLSEVCGQDITTKHMLPTVLRMAGDPVANVRFVAKSLQKIGPILDNSTLQSEV
KPILEKLTQDQDVVKYFAQEALTVLSLA

TRTRPLEQKLI SEEDLAANDILDYKDDDDKV

Tag:	C-Myc/DDK
Purity:	> 80% as determined by SDS-PAGE and Coomassie blue staining
Concentration:	>0.05 µg/µL as determined by microplate BCA method
Labeling Method:	Labeled with [U- ¹³ C ₆ , ¹⁵ N ₄]-L-Arginine and [U- ¹³ C ₆ , ¹⁵ N ₂]-L-Lysine
Buffer:	25 mM Tris-HCl, 100 mM glycine, pH 7.3
Storage:	Store at -80°C. Avoid repeated freeze-thaw cycles.
Stability:	Stable for 3 months from receipt of products under proper storage and handling conditions.
RefSeq:	NP_055040
RefSeq Size:	2519
RefSeq ORF:	1767



[View online »](#)

Synonyms: MRD36; PP2A-Aalpha; PP2AA; PP2AAALPHA; PR65A

Locus ID: 5518

UniProt ID: [P30153](#), [A8K7B7](#)

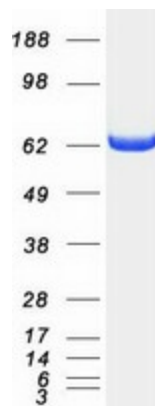
Cytogenetics: 19q13.41

Summary: This gene encodes a constant regulatory subunit of protein phosphatase 2. Protein phosphatase 2 is one of the four major Ser/Thr phosphatases, and it is implicated in the negative control of cell growth and division. It consists of a common heteromeric core enzyme, which is composed of a catalytic subunit and a constant regulatory subunit, that associates with a variety of regulatory subunits. The constant regulatory subunit A serves as a scaffolding molecule to coordinate the assembly of the catalytic subunit and a variable regulatory B subunit. This gene encodes an alpha isoform of the constant regulatory subunit A. Alternatively spliced transcript variants have been described. [provided by RefSeq, Apr 2010]

Protein Families: Druggable Genome, Phosphatase, Transcription Factors

Protein Pathways: Long-term depression, Oocyte meiosis, TGF-beta signaling pathway, Tight junction, Wnt signaling pathway

Product images:



Coomassie blue staining of purified PPP2R1A protein (Cat# [TP300056]). The protein was produced from HEK293T cells transfected with PPP2R1A cDNA clone (Cat# [RC200056]) using MegaTran 2.0 (Cat# [TT210002]).