

Product datasheet for PH300055

METTL11A (NTMT1) (NM_014064) Human Mass Spec Standard

Product data:

Product Type:	Mass Spec Standards
Description:	METTL11A MS Standard C13 and N15-labeled recombinant protein (NP_054783)
Species:	Human
Expression Host:	HEK293
Expression cDNA Clone or AA Sequence:	RC200055
Predicted MW:	25.4 kDa
Protein Sequence:	>RC200055 protein sequence Red=Cloning site Green=Tags(s) MTSEVIEDEKQFYSAKTYWKQIPPTVDGMLGGYGHISSIDINSSRKFLQRFLREGPNKGTSCALDCGA GIGRITKRLLLPLFREVMVDITEDFLVQAKTYLGEEGKRVRNIFCCGLQDFTPEPDSYDVIWIQWVIGH LTDQHAEFLRRCKGSLRPNGIIVIKDNMAQEGVILDDVDSSVCRDLDVVRRRIICSAGLSLLAEERQENL PDEIYHVYSFALR TRTRPLEQKLISEEDLAANDILDYKDDDDKV
Tag:	C-Myc/DDK
Purity:	> 80% as determined by SDS-PAGE and Coomassie blue staining
Concentration:	>0.05 µg/µL as determined by microplate BCA method
Labeling Method:	Labeled with [U- 13C6, 15N4]-L-Arginine and [U- 13C6, 15N2]-L-Lysine
Buffer:	25 mM Tris-HCl, 100 mM glycine, pH 7.3
Storage:	Store at -80°C. Avoid repeated freeze-thaw cycles.
Stability:	Stable for 3 months from receipt of products under proper storage and handling conditions.
RefSeq:	NP_054783
RefSeq Size:	1536
RefSeq ORF:	669
Synonyms:	AD-003; C9orf32; HOMT1A; METTL11A; NRMT; NRMT1; NTM1A
Locus ID:	28989
UniProt ID:	Q9BV86 , A0A024R8E4



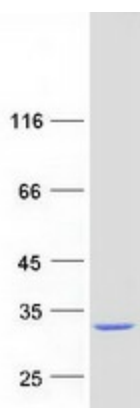
[View online »](#)

Cytogenetics: 9q34.11

Summary: The METTL11A gene encodes an N-terminal methyltransferase for the RAN (MIM 601179) guanine nucleotide exchange factor regulator of chromosome condensation 1 (RCC1; MIM 179710). METTL11A enzyme alpha-N-methylates other protein targets such as SET (MIM 600960) and RB (MIM 180200).[supplied by OMIM, Nov 2010]

Protein Families: Druggable Genome

Product images:



Coomassie blue staining of purified NTMT1 protein (Cat# [TP300055]). The protein was produced from HEK293T cells transfected with NTMT1 cDNA clone (Cat# [RC200055]) using MegaTran 2.0 (Cat# [TT210002]).