

## Product datasheet for PH300054

### RPL36 (NM\_015414) Human Mass Spec Standard

#### Product data:

Product Type:	Mass Spec Standards
Description:	RPL36 MS Standard C13 and N15-labeled recombinant protein (NP_056229)
Species:	Human
Expression Host:	HEK293
Expression cDNA Clone or AA Sequence:	RC200054
Predicted MW:	12.3 kDa
Protein Sequence:	<p>&gt;RC200054 protein sequence</p> <p>Red=Cloning site Green=Tags(s)</p> <p>MALRYPMVAVGLNKGHKVTKNVSKPRHSRRRGRLTKHTKFVRDMIREVCGFAPYERRAMELLKVSQDKRAL KFIKKRVGTHIRAKRKREELSNVLAAMRKAACKD</p> <p>TRTRPLEQKLISEEDLAANDILDYKDDDDKV</p>
Tag:	C-Myc/DDK
Purity:	> 80% as determined by SDS-PAGE and Coomassie blue staining
Concentration:	>0.05 µg/µL as determined by microplate BCA method
Labeling Method:	Labeled with [U- 13C6, 15N4]-L-Arginine and [U- 13C6, 15N2]-L-Lysine
Buffer:	25 mM Tris-HCl, 100 mM glycine, pH 7.3
Storage:	Store at -80°C. Avoid repeated freeze-thaw cycles.
Stability:	Stable for 3 months from receipt of products under proper storage and handling conditions.
RefSeq:	<a href="#">NP_056229</a>
RefSeq Size:	557
RefSeq ORF:	315
Synonyms:	L36
Locus ID:	25873
UniProt ID:	<a href="#">Q9Y3U8</a>
Cytogenetics:	19p13.3



[View online »](#)

**Summary:**

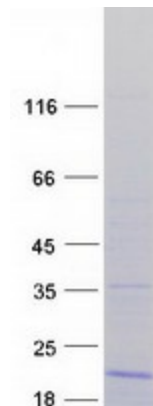
Ribosomes, the organelles that catalyze protein synthesis, consist of a small 40S subunit and a large 60S subunit. Together these subunits are composed of 4 RNA species and approximately 80 structurally distinct proteins. This gene encodes a ribosomal protein that is a component of the 60S subunit. The protein belongs to the L36E family of ribosomal proteins. It is located in the cytoplasm. Transcript variants derived from alternative splicing exist; they encode the same protein. As is typical for genes encoding ribosomal proteins, there are multiple processed pseudogenes of this gene dispersed through the genome. [provided by RefSeq, Jul 2008]

**Protein Families:**

Druggable Genome

**Protein Pathways:**

Ribosome

**Product images:**


Coomassie blue staining of purified RPL36 protein (Cat# [TP300054]). The protein was produced from HEK293T cells transfected with RPL36 cDNA clone (Cat# [RC200054]) using MegaTran 2.0 (Cat# [TT210002]).