

Product datasheet for PH300052

MRPL18 (NM_014161) Human Mass Spec Standard

Product data:

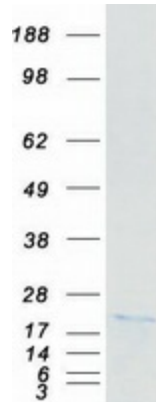
Product Type:	Mass Spec Standards
Description:	MRPL18 MS Standard C13 and N15-labeled recombinant protein (NP_054880)
Species:	Human
Expression Host:	HEK293
Expression cDNA Clone or AA Sequence:	RC200052
Predicted MW:	20.6 kDa
Protein Sequence:	<p>>RC200052 protein sequence</p> <p>Red=Cloning site Green=Tags(s)</p> <p>MALRSRFWGLFSVCRNPGCRFAALSTSSEPAKPEVDPVENEAVAPEFTNRNPRNLELLSVARKERGWRT VFPSREFWHRLRVIRTQHHVEALVEHQNGKVVSASTREWAIAKKHLYSTRNVVACESIGRVLAQRCLEAG INFMVYQPTPWEAASDSMKRLQSAMTEGGVVLREPQRIYE</p> <p>TRTRPLEQKLISEEDLAANDILDYKDDDDKV</p>
Tag:	C-Myc/DDK
Purity:	> 80% as determined by SDS-PAGE and Coomassie blue staining
Concentration:	>0.05 µg/µL as determined by microplate BCA method
Labeling Method:	Labeled with [U- ¹³ C ₆ , ¹⁵ N ₄]-L-Arginine and [U- ¹³ C ₆ , ¹⁵ N ₂]-L-Lysine
Buffer:	25 mM Tris-HCl, 100 mM glycine, pH 7.3
Storage:	Store at -80°C. Avoid repeated freeze-thaw cycles.
Stability:	Stable for 3 months from receipt of products under proper storage and handling conditions.
RefSeq:	NP_054880
RefSeq Size:	994
RefSeq ORF:	540
Synonyms:	HSPC071; L18mt; MRP-L18
Locus ID:	29074
UniProt ID:	Q9H0U6


[View online »](#)

Cytogenetics: 6q25.3

Summary: This nuclear gene encodes a protein component of the larger 39S subunit of mitochondrial ribosome. This protein may also aid in the import of nuclear-encoded 5S rRNA into mitochondria. Alternative splicing results in multiple transcript variants, most of which are not predicted to encode a protein. A pseudogene of this gene is found on chromosome 16. [provided by RefSeq, Jan 2016]

Product images:



Coomassie blue staining of purified MRPL18 protein (Cat# [TP300052]). The protein was produced from HEK293T cells transfected with MRPL18 cDNA clone (Cat# [RC200052]) using MegaTran 2.0 (Cat# [TT210002]).