

## Product datasheet for PH300049

### TMEM208 (NM\_014187) Human Mass Spec Standard

#### Product data:

Product Type:	Mass Spec Standards
Description:	TMEM208 MS Standard C13 and N15-labeled recombinant protein (NP_054906)
Species:	Human
Expression Host:	HEK293
Expression cDNA Clone or AA Sequence:	RC200049
Predicted MW:	19.6 kDa
Protein Sequence:	>RC200049 protein sequence <b>Red</b> =Cloning site <b>Green</b> =Tags(s)  MAPKGKVGTRGKKQIFEENRETLKFYLRILGANAIYCLVTLVFFYSSASFWAWLALGFSLAVYGASYHS MSSMARAAFSEDGALMDGGMDLNMEQGMAEHLKDVILLTAIVQVLSCFSLYVWSFWLLAPGRALYLLWVN VLGPWFTADSGTPAPEHNEKRQRQERRQMKRL  <b>TR</b> TRPLEQKLI SEEDLAANDILDYKDDDDKV
Tag:	C-Myc/DDK
Purity:	> 80% as determined by SDS-PAGE and Coomassie blue staining
Concentration:	>0.05 µg/µL as determined by microplate BCA method
Labeling Method:	Labeled with [U- <sup>13</sup> C <sub>6</sub> , <sup>15</sup> N <sub>4</sub> ]-L-Arginine and [U- <sup>13</sup> C <sub>6</sub> , <sup>15</sup> N <sub>2</sub> ]-L-Lysine
Buffer:	25 mM Tris-HCl, 100 mM glycine, pH 7.3
Storage:	Store at -80°C. Avoid repeated freeze-thaw cycles.
Stability:	Stable for 3 months from receipt of products under proper storage and handling conditions.
RefSeq:	<a href="#">NP_054906</a>
RefSeq Size:	808
RefSeq ORF:	519
Synonyms:	hSND2; HSPC171
Locus ID:	29100
UniProt ID:	<a href="#">Q9BTX3</a>



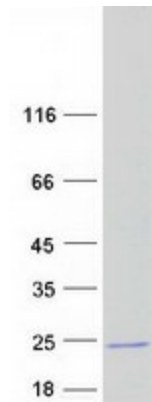
[View online »](#)

Cytogenetics: 16q22.1

**Summary:** This gene encodes a highly conserved protein which is localized in the endoplasmic reticulum (ER). The protein is linked to autophagy and ER stress. Knockdown of this gene increased autophagy and triggered ER stress. Alternative splicing results in multiple transcript variants. [provided by RefSeq, Dec 2015]

**Protein Families:** Transmembrane

### Product images:



Coomassie blue staining of purified TMEM208 protein (Cat# [TP300049]). The protein was produced from HEK293T cells transfected with TMEM208 cDNA clone (Cat# [RC200049]) using MegaTran 2.0 (Cat# [TT210002]).