

Product datasheet for PH300042

Bcl rambo (BCL2L13) (NM_015367) Human Mass Spec Standard

Product data:

Product Type:	Mass Spec Standards
Description:	BCL2L13 MS Standard C13 and N15-labeled recombinant protein (NP_056182)
Species:	Human
Expression Host:	HEK293
Expression cDNA Clone or AA Sequence:	RC200042
Predicted MW:	52.7 kDa
Protein Sequence:	>RC200042 protein sequence Red=Cloning site Green=Tags(s)

MASSTVPLGFHYETKYVVL SYLGLLSQEKLQEQLSSPQGVQLDIASQSLDQEILLKVKTEIEEELKSL
DKEISEAFTSTGFDRHTSPVFS PANPESMEDCLAHLGEKVSQELKEPLHKALQMLLSQPVTYQAFRECT
LETTVHASGWNKILVPLVLLRQMLLELTRRGQEPLSALLQFGVTYLEDYSAEYIIQQGGWGTVFSLESEE
EEYPGITAEDSNDIYILPSDMSGQVSPPESTVTTSWQSESLPVLSASQSWHTESLPVSLGPESWQQIA
MDPEEVKSLDSNGAGEKSENSSNSDIHVHEKEEVPEGMEEAAVASVVL PARELQEALPEAPAPLLPHIT
ATSLTGTRESDEVTVEKSSPATSLFVELDEEEVKAATTEPTEVEEVPALEPTETLLSEKEINAREES
LVEELSPASEKKPVPPSEGKSR LSPAGEMKPMPLSEGKSILLFGGAAAVAILAVAIGVALALRKK

TRTRPLEQKLI SEEDLAANDILDYKDDDDKV

Tag:	C-Myc/DDK
Purity:	> 80% as determined by SDS-PAGE and Coomassie blue staining
Concentration:	>0.05 µg/µL as determined by microplate BCA method
Labeling Method:	Labeled with [U- ¹³ C ₆ , ¹⁵ N ₄]-L-Arginine and [U- ¹³ C ₆ , ¹⁵ N ₂]-L-Lysine
Buffer:	25 mM Tris-HCl, 100 mM glycine, pH 7.3
Storage:	Store at -80°C. Avoid repeated freeze-thaw cycles.
Stability:	Stable for 3 months from receipt of products under proper storage and handling conditions.
RefSeq:	<u>NP_056182</u>
RefSeq Size:	5132
RefSeq ORF:	1455
Synonyms:	BCL-RAMBO; Bcl2-L-13; MIL1



[View online »](#)

Locus ID: 23786

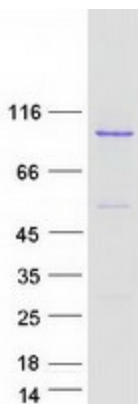
UniProt ID: [Q9BXK5](#)

Cytogenetics: 22q11.21

Summary: This gene encodes a mitochondrially-localized protein with conserved B-cell lymphoma 2 homology motifs. Overexpression of the encoded protein results in apoptosis. Alternatively spliced transcript variants have been observed for this gene. [provided by RefSeq, Jul 2012]

Protein Families: Druggable Genome, Transmembrane

Product images:



Coomassie blue staining of purified BCL2L13 protein (Cat# [TP300042]). The protein was produced from HEK293T cells transfected with BCL2L13 cDNA clone (Cat# [RC200042]) using MegaTran 2.0 (Cat# [TT210002]).