

## Product datasheet for PH300026

### GAL4 (LGALS4) (NM\_006149) Human Mass Spec Standard

#### Product data:

Product Type:	Mass Spec Standards
Description:	LGALS4 MS Standard C13 and N15-labeled recombinant protein (NP_006140)
Species:	Human
Expression Host:	HEK293
Expression cDNA Clone or AA Sequence:	RC200026
Predicted MW:	35.8 kDa
Protein Sequence:	>RC200026 representing NM_006149 Red=Cloning site Green=Tags(s)  MAYVPAPGYQPTYNPTLPYYQPIPGGLNVGMSVYIQGVASEHMKRFFVNFVVGQDPGSDVAFHFNPRFDG WDKVVFNLTQGGKWGSEERKRSMPFKKGAFAELVIVLAEHYKVVVNGNPFYEYGHRLPLQMVTHLQVDG DLQLQSINFIGGQPLRPQGPMPYPGPGHCHQQLNSLPTMEGPPTFNPPVPYFGRLLQGGTLARRTIII KGYVPPTGKSFAINFKVGSSGDIALHINPRMGNGTVVRNSLLNGSWGSEKKITHNPFPGQGFDFLSIRC GLDRFKVYANGQHLLDFAHRLSAFQRVDTLEIQGDVTLSSVYQI  TRTRPLEQKLISEEDLAANDILDYKDDDDKV
Tag:	C-Myc/DDK
Purity:	> 80% as determined by SDS-PAGE and Coomassie blue staining
Concentration:	>0.05 µg/µL as determined by microplate BCA method
Labeling Method:	Labeled with [U- <sup>13</sup> C <sub>6</sub> , <sup>15</sup> N <sub>4</sub> ]-L-Arginine and [U- <sup>13</sup> C <sub>6</sub> , <sup>15</sup> N <sub>2</sub> ]-L-Lysine
Buffer:	25 mM Tris-HCl, 100 mM glycine, pH 7.3
Storage:	Store at -80°C. Avoid repeated freeze-thaw cycles.
Stability:	Stable for 3 months from receipt of products under proper storage and handling conditions.
RefSeq:	<a href="#">NP_006140</a>
RefSeq Size:	1117
RefSeq ORF:	969
Synonyms:	GAL4; L36LBP
Locus ID:	3960



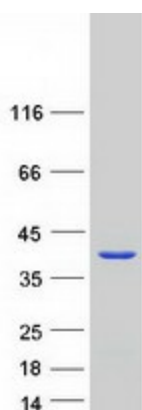
[View online »](#)

UniProt ID: [P56470](#), [Q6FHZ4](#)

Cytogenetics: 19q13.2

Summary: The galectins are a family of beta-galactoside-binding proteins implicated in modulating cell-cell and cell-matrix interactions. The expression of this gene is restricted to small intestine, colon, and rectum, and it is underexpressed in colorectal cancer. [provided by RefSeq, Jul 2008]

### Product images:



Coomassie blue staining of purified LGALS4 protein (Cat# [TP300026]). The protein was produced from HEK293T cells transfected with LGALS4 cDNA clone (Cat# [RC200026]) using MegaTran 2.0 (Cat# [TT210002]).