

Product datasheet for PH300018

LCMT1 (NM_016309) Human Mass Spec Standard

Product data:

Product Type:	Mass Spec Standards
Description:	LCMT1 MS Standard C13 and N15-labeled recombinant protein (NP_057393)
Species:	Human
Expression Host:	HEK293
Expression cDNA Clone or AA Sequence:	RC200018
Predicted MW:	38.4 kDa
Protein Sequence:	>RC200018 protein sequence Red=Cloning site Green=Tags(s)

MATRQRESSITSCCSTSSCDADDEGVRGTCEDASLCKRF AVSIGYWHDPYIQHFVRLSKERKAPEINRGY
FARVHGVSQLIKAF LRKTECHCQIVNLGAGMDTTFWRLKDEDLLPSKYFEVD FPMIVTRKLHSIKCKPPL
SSPILELHSED TLQMDGHILDSKRYAVIGADLRDLSELEEK LKKCNMNTQLPTLLIAECLVYMTPEQSA
NLLKWAANSFERAMFINYEQVNMGDRFGQIM IENLRRRQC DLAGVETCKSLESQKERLLSNGWETASAVD
MMELYNRLPRAEVSRIESLEFLDEME LLEQLMRHYCLCWATKGGNELGLKEITY

TRTRPLEQKLI SEEDLAANDILDYKDDDDKV

Tag:	C-Myc/DDK
Purity:	> 80% as determined by SDS-PAGE and Coomassie blue staining
Concentration:	>0.05 µg/µL as determined by microplate BCA method
Labeling Method:	Labeled with [U- ¹³ C ₆ , ¹⁵ N ₄]-L-Arginine and [U- ¹³ C ₆ , ¹⁵ N ₂]-L-Lysine
Buffer:	25 mM Tris-HCl, 100 mM glycine, pH 7.3
Storage:	Store at -80°C. Avoid repeated freeze-thaw cycles.
Stability:	Stable for 3 months from receipt of products under proper storage and handling conditions.
RefSeq:	<u>NP_057393</u>
RefSeq Size:	1374
RefSeq ORF:	1002
Synonyms:	CGI-68; LCMT; PPMT1
Locus ID:	51451



[View online »](#)

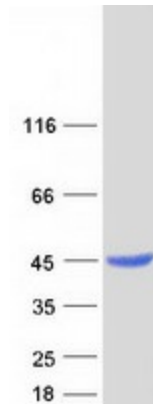
UniProt ID: [Q9UIC8](#)

Cytogenetics: 16p12.1

Summary: LCMT1 catalyzes the methylation of the carboxyl group of the C-terminal leucine residue (Leu309) of the catalytic subunit of protein phosphatase-2A (PPP2CA; MIM 176915) (De Baere et al., 1999 [PubMed 10600115]). [supplied by OMIM, Mar 2008]

Protein Pathways: Androgen and estrogen metabolism, Histidine metabolism, Selenoamino acid metabolism, Tyrosine metabolism

Product images:



Coomassie blue staining of purified LCMT1 protein (Cat# [TP300018]). The protein was produced from HEK293T cells transfected with LCMT1 cDNA clone (Cat# [RC200018]) using MegaTran 2.0 (Cat# [TT210002]).