

## Product datasheet for PH300016

### C14orf166 (RTRAF) (NM\_016039) Human Mass Spec Standard

#### Product data:

Product Type:	Mass Spec Standards
Description:	C14orf166 MS Standard C13 and N15-labeled recombinant protein (NP_057123)
Species:	Human
Expression Host:	HEK293
Expression cDNA Clone or AA Sequence:	RC200016
Predicted MW:	28.1 kDa
Protein Sequence:	>RC200016 protein sequence Red=Cloning site Green=Tags(s)
	MFRRKLTALDYHNPAGFNCKDETEFRNFIVWLEDQKIRHYKIEDRGNLRNIHSSDWPKFFEKYLRDVNCP FKIQDRQEAIWLLGLAVRLEYGDNAEKYKDLVPDNSKTADNATKNAEPLINLDVNNPDFKAGVMALANL LQIQRHDDYLVMKAIKIRILVQERLTQDAVAKANQKEGLPVALDKHILGFDTGDAVLNAAQILRLLHIE ELRELQTKINEAIVAVQAIADPKTDHRLGKVGR
	TRTRPLEQKLI SEEDLAANDILDYKDDDDKV
Tag:	C-Myc/DDK
Purity:	> 80% as determined by SDS-PAGE and Coomassie blue staining
Concentration:	>0.05 µg/µL as determined by microplate BCA method
Labeling Method:	Labeled with [U- <sup>13</sup> C <sub>6</sub> , <sup>15</sup> N <sub>4</sub> ]-L-Arginine and [U- <sup>13</sup> C <sub>6</sub> , <sup>15</sup> N <sub>2</sub> ]-L-Lysine
Buffer:	25 mM Tris-HCl, 100 mM glycine, pH 7.3
Storage:	Store at -80°C. Avoid repeated freeze-thaw cycles.
Stability:	Stable for 3 months from receipt of products under proper storage and handling conditions.
RefSeq:	<a href="#">NP_057123</a>
RefSeq Size:	1064
RefSeq ORF:	732
Synonyms:	C14orf166; CGI-99; CGI99; CLE; CLE7; hCLE; hCLE1; LCRP369; RLLM1
Locus ID:	51637
UniProt ID:	<a href="#">Q9Y224</a> , <a href="#">Q549M8</a>

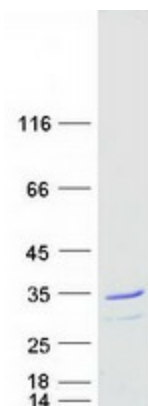


[View online »](#)

Cytogenetics: 14q22.1

**Summary:** RNA-binding protein involved in modulation of mRNA transcription by Polymerase II (PubMed:16950395). Component of the tRNA-splicing ligase complex and is required for tRNA ligation (PubMed:24870230). May be required for RNA transport (PubMed:24608264). [UniProtKB/Swiss-Prot Function]

### Product images:



Coomassie blue staining of purified RTRAF protein (Cat# [TP300016]). The protein was produced from HEK293T cells transfected with RTRAF cDNA clone (Cat# [RC200016]) using MegaTran 2.0 (Cat# [TT210002]).