

## Product datasheet for PH300015

### PPIL1 (NM\_016059) Human Mass Spec Standard

#### Product data:

Product Type:	Mass Spec Standards
Description:	PPIL1 MS Standard C13 and N15-labeled recombinant protein (NP_057143)
Species:	Human
Expression Host:	HEK293
Expression cDNA Clone or AA Sequence:	RC200015
Predicted MW:	18.2 kDa
Protein Sequence:	>RC200015 protein sequence <b>Red</b> =Cloning site <b>Green</b> =Tags(s)  MAAIPPDSWQPPNVYLETSMGIIIVLELYWKHAPKTCKNF AELARRGYNGTKFHRIKDFMIQGGDPTGT GRGGAS IY GKQFEDELHPDLKFTGAGILAMANAGPDTNGSQFFVTLAPTQWLDGKHTIFGRVCQGIGMVN RVGMVETNSQDRPVDDVKI IKAYPSG  <b>TRTRPLEQKLI SEEDLAANDILDYKDDDDKV</b>
Tag:	C-Myc/DDK
Purity:	> 80% as determined by SDS-PAGE and Coomassie blue staining
Concentration:	>0.05 µg/µL as determined by microplate BCA method
Labeling Method:	Labeled with [U- <sup>13</sup> C <sub>6</sub> , <sup>15</sup> N <sub>4</sub> ]-L-Arginine and [U- <sup>13</sup> C <sub>6</sub> , <sup>15</sup> N <sub>2</sub> ]-L-Lysine
Buffer:	25 mM Tris-HCl, 100 mM glycine, pH 7.3
Storage:	Store at -80°C. Avoid repeated freeze-thaw cycles.
Stability:	Stable for 3 months from receipt of products under proper storage and handling conditions.
RefSeq:	<a href="#">NP_057143</a>
RefSeq Size:	1750
RefSeq ORF:	498
Synonyms:	CGI-124; CYPL1; hCyPX; PCH14; PPlase
Locus ID:	51645
UniProt ID:	<a href="#">Q9Y3C6</a> , <a href="#">A0A024RCX8</a> , <a href="#">A0A494C014</a>



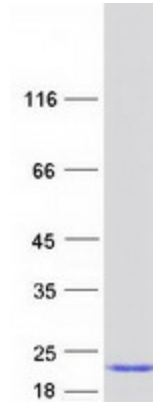
[View online »](#)

**Cytogenetics:** 6p21.2

**Summary:** This gene is a member of the cyclophilin family of peptidylprolyl isomerases (PPIases). The cyclophilins are a highly conserved, ubiquitous family, members of which play an important role in protein folding, immunosuppression by cyclosporin A, and infection of HIV-1 virions. Based on similarity to other PPIases, this protein could accelerate the folding of proteins and might catalyze the cis-trans isomerization of proline imidic peptide bonds in oligopeptides. [provided by RefSeq, Jul 2008]

**Protein Pathways:** Spliceosome

**Product images:**



Coomassie blue staining of purified PPIL1 protein (Cat# [TP300015]). The protein was produced from HEK293T cells transfected with PPIL1 cDNA clone (Cat# [RC200015]) using MegaTran 2.0 (Cat# [TT210002]).