

Product datasheet for PH300013

14 3 3 eta (YWHAH) (NM_003405) Human Mass Spec Standard

Product data:

Product Type:	Mass Spec Standards
Description:	YWHAH MS Standard C13 and N15-labeled recombinant protein (NP_003396)
Species:	Human
Expression Host:	HEK293
Expression cDNA Clone or AA Sequence:	RC200013
Predicted MW:	28.2 kDa
Protein Sequence:	>RC200013 protein sequence Red=Cloning site Green=Tags(s) MGDREQLLQRLAEQAERYDDMASAMKAVTELNEPLSNEDRNLLSVAYKNVVGARRSSWRVISSIEQKT MADGNEKKLEKVKAYREKIEKELETVCNDVLSLLDKFLIKNCNDFQYESKVFYLMKMGDYRYLAEVASG EKKNSVVEASEAAYKEAFEISKEQMOPHTPIRLGLALNFSVFYYEIQNAPEQAQLLAKQAFDDAIAELDT LNEDSYKDSTLIMQLLRDNLTLWTSDQQDEEAGEGN TRTRPLEQKLI SEEDLAANDILDYKDDDDKV
Tag:	C-Myc/DDK
Purity:	> 80% as determined by SDS-PAGE and Coomassie blue staining
Concentration:	>0.05 µg/µL as determined by microplate BCA method
Labeling Method:	Labeled with [U- ¹³ C ₆ , ¹⁵ N ₄]-L-Arginine and [U- ¹³ C ₆ , ¹⁵ N ₂]-L-Lysine
Buffer:	25 mM Tris-HCl, 100 mM glycine, pH 7.3
Storage:	Store at -80°C. Avoid repeated freeze-thaw cycles.
Stability:	Stable for 3 months from receipt of products under proper storage and handling conditions.
RefSeq:	NP_003396
RefSeq Size:	1807
RefSeq ORF:	738
Synonyms:	YWHA1
Locus ID:	7533
UniProt ID:	Q04917 , A0A024R1K7 , Q9H4N8



[View online »](#)

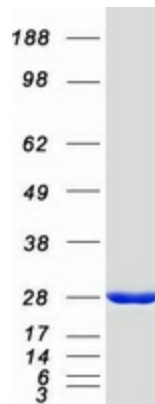
Cytogenetics: 22q12.3

Summary: This gene product belongs to the 14-3-3 family of proteins which mediate signal transduction by binding to phosphoserine-containing proteins. This highly conserved protein family is found in both plants and mammals, and this protein is 99% identical to the mouse, rat and bovine orthologs. This gene contains a 7 bp repeat sequence in its 5' UTR, and changes in the number of this repeat have been associated with early-onset schizophrenia and psychotic bipolar disorder. [provided by RefSeq, Jun 2009]

Protein Families: Druggable Genome, Transcription Factors

Protein Pathways: Cell cycle, Neurotrophin signaling pathway, Oocyte meiosis

Product images:



Coomassie blue staining of purified YWHAH protein (Cat# [TP300013]). The protein was produced from HEK293T cells transfected with YWHAH cDNA clone (Cat# [RC200013]) using MegaTran 2.0 (Cat# [TT210002]).