

Product datasheet for PH300011

PSF2 (GINS2) (NM_016095) Human Mass Spec Standard

Product data:

Product Type:	Mass Spec Standards
Description:	GINS2 MS Standard C13 and N15-labeled recombinant protein (NP_057179)
Species:	Human
Expression Host:	HEK293
Expression cDNA Clone or AA Sequence:	RC200011
Predicted MW:	21.4 kDa
Protein Sequence:	<p>>RC200011 protein sequence</p> <p>Red=Cloning site Green=Tags(s)</p> <p>MDAAEVEFLAEKELVTIIPNFSLDKIYLIIGDGLGPFNPGLPVEVPLWLAINLKQRQKCRLLPPEWMDVEK LEKMRDHERKEETFTPMPSPYYMELTKLLLNHASDNIPKADEIRTLVKDMWDTRIAKLRSADSFVRQQE AHAKLDNLTLMINTSGTFLTQALNHMYKLRTNLQPLESTQSQDF</p> <p>TRTRPLEQKLISEEDLAANDILDYKDDDDKV</p>
Tag:	C-Myc/DDK
Purity:	> 80% as determined by SDS-PAGE and Coomassie blue staining
Concentration:	>0.05 µg/µL as determined by microplate BCA method
Labeling Method:	Labeled with [U- ¹³ C ₆ , ¹⁵ N ₄]-L-Arginine and [U- ¹³ C ₆ , ¹⁵ N ₂]-L-Lysine
Buffer:	25 mM Tris-HCl, 100 mM glycine, pH 7.3
Storage:	Store at -80°C. Avoid repeated freeze-thaw cycles.
Stability:	Stable for 3 months from receipt of products under proper storage and handling conditions.
RefSeq:	<u>NP_057179</u>
RefSeq Size:	1196
RefSeq ORF:	555
Synonyms:	HSPC037; Pfs2; PSF2
Locus ID:	51659
UniProt ID:	<u>Q9Y248</u>

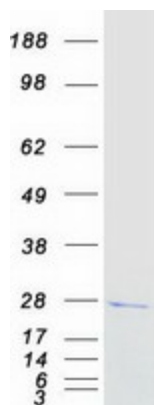

[View online »](#)

Cytogenetics: 16q24.1

Summary: The yeast heterotetrameric GINS complex is made up of Sld5 (GINS4; MIM 610611), Psf1 (GINS1; MIM 610608), Psf2, and Psf3 (GINS3; MIM 610610). The formation of this complex is essential for the initiation of DNA replication in yeast and *Xenopus* egg extracts (Ueno et al., 2005 [PubMed 16287864]). See GINS1 for additional information about the GINS complex. [supplied by OMIM, Mar 2008]

Protein Families: Druggable Genome

Product images:



Coomassie blue staining of purified GINS2 protein (Cat# [TP300011]). The protein was produced from HEK293T cells transfected with GINS2 cDNA clone (Cat# [RC200011]) using MegaTran 2.0 (Cat# [TT210002]).