

Product datasheet for **PH300009**

PPME1 (NM_016147) Human Mass Spec Standard

Product data:

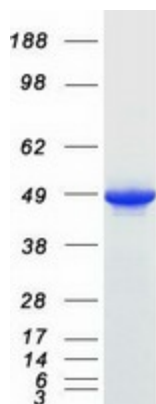
Product Type:	Mass Spec Standards
Description:	PPME1 MS Standard C13 and N15-labeled recombinant protein (NP_057231)
Species:	Human
Expression Host:	HEK293
Expression cDNA Clone or AA Sequence:	RC200009
Predicted MW:	42.1 kDa
Protein Sequence:	RC200009
Tag:	C-Myc/DDK
Purity:	> 80% as determined by SDS-PAGE and Coomassie blue staining
Concentration:	>0.05 µg/µL as determined by microplate BCA method
Labeling Method:	Labeled with [U- ¹³ C ₆ , ¹⁵ N ₄]-L-Arginine and [U- ¹³ C ₆ , ¹⁵ N ₂]-L-Lysine
Buffer:	25 mM Tris-HCl, 100 mM glycine, pH 7.3
Storage:	Store at -80°C. Avoid repeated freeze-thaw cycles.
Stability:	Stable for 3 months from receipt of products under proper storage and handling conditions.
RefSeq:	NP_057231
RefSeq Size:	2484
RefSeq ORF:	1158
Synonyms:	ABDH19; PME-1
Locus ID:	51400
UniProt ID:	Q9Y570 , A0A140VK39
Cytogenetics:	11q13.4
Summary:	This gene encodes a protein phosphatase methyltransferase localized to the nucleus. The encoded protein acts on the protein phosphatase-2A catalytic subunit and supports the ERK pathway through dephosphorylation of regulatory proteins. It plays a role in malignant glioma progression. Alternative splicing results in multiple transcript variants. [provided by RefSeq, Oct 2012]



[View online »](#)

Protein Families: Druggable Genome

Product images:



Coomassie blue staining of purified PPME1 protein (Cat# [TP300009]). The protein was produced from HEK293T cells transfected with PPME1 cDNA clone (Cat# [RC200009]) using MegaTran 2.0 (Cat# [TT210002]).