

Product datasheet for NP100050

MycTrack™ Mycoplasma Detection Kit w/ Internal Amplification Control (IAC)

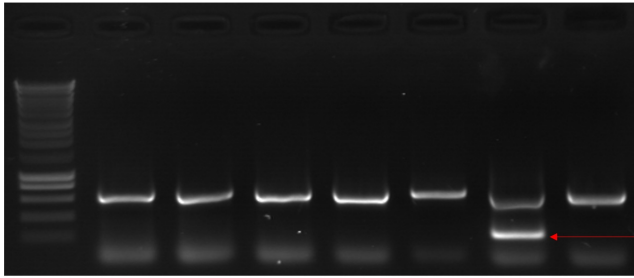
Product data:

Product Type:	Mycoplasma
Description:	MycTrack™ Mycoplasma Detection Kit w/ IAC
Assay Type:	PCR
Assay Length:	~2-3 hours
Sample Volume:	3-5µl
Specificity:	This kit is used for qualitative detection of <i>M. orale</i> , <i>M. hyorhinitis</i> , <i>M. arginini</i> , <i>M. fermentans</i> , <i>Acholeplasma laidlawii</i> , <i>M. hominis</i> , <i>M. pneumoniae</i> , <i>M. salivarium</i> , <i>M. synoviae</i> and <i>Ureaplasma</i>
Sensitivity:	10 to 10000 copies
Reactivity:	Bacteria
Components:	250µl of 2XPCR Premix; 50µl of Primer Mix; 13µl of Positive Control DNA; 150µl of DNase Free Water
Background:	Mycoplasma contamination remains a prominent issue in biopharmaceutical manufacturing and research labs globally. Early detection can prevent loss of valuable products, and most importantly, inaccurate or erroneous experimental results.
Quality Control:	Each lot of the MycoTrack™ Mycoplasma detection kit is tested and confirmed to identify the Mycoplasma species stated in the product insert. If stored under recommended storage conditions (-20°C), the kit will remain stable for 12 months from the date of receipt.



Product images:

1kb S2 CL100012 clones
 S3 S4 S6 HEK293T Pos Neg



700 bp Internal control Mycoplasma detection of TROVE2 over-expression stable cell line samples using MycoTrack
 300 bp/Myco band