

## Product datasheet for MR231988

### Hsd17b2 (NM\_008290) Mouse Tagged ORF Clone

#### Product data:

|                           |  |
|---------------------------|--|
| Product Type:             | Expression Plasmids  |
| Product Name:             | Hsd17b2 (NM_008290) Mouse Tagged ORF Clone   |
| Tag:                      | Myc-DDK  |
| Symbol:                   | Hsd17b2  |
| Synonyms:                 | A1194836; A1194967; A1255511   |
| Mammalian Cell Selection: | Neomycin   |
| Vector:                   | pCMV6-Entry (PS100001)   |
| E. coli Selection:        | Kanamycin (25 ug/mL)   |
| ORF Nucleotide Sequence:  | > ORF sequence, MR231988 may differ due to SNPs.<br>Blue=ORF Red=Cloning site Green=Tag(s) |

```
GCTCGTTTGTAGAACCGTCAGAATTTGTAAACGACTCACTATAGGGCGCCGGGAATTCGTCGACTG
GATCCGGTACCGAGGAGATCTGCCGCCGCGATCGCC
ATGAGCCCGTTTGCCTCTGAGTCAGCATGGCTCTGCTTGGCTGCCGCTGCAGTGTGGGGGACGCTT
CTCTGCCGATGCCGAGTGGCAGGCAGCTGCCGAGCCAGGCGGTGTCTCGCTGGCCTCTGGGAGGT
GCCTGCCTGCTCAGTCTGTCCCTCCTCTGCACCTTGTTCCTTTATCCGTGGCCTGCTTCTTCTTCTG
TATATGAGTTCATCTGACCAAGACTTGTACCTGTGGATCAAAGGCCGTGCTGGTGACAGGTGCTGAT
TCCGGTTTCGGTCACGGTTTGGCCAAGCACCTGGACAAGCTGGGTTTACAGTGTGCTGGAGTGCTG
GACAAAGAGGGCCCGGAGCAGAGGAAGTGAAGAAACACTGCTCTGAGCGTCTTTCAGTGTCCAGATG
GATGTACCAAGCCAGAGCAGATAAAAGATGCTCACAGCAAAGTCACAGAGAAGATACAAGACAAAGGA
CTGTGGGCGGTGTTAAACAATGCCGGGGTCTTCCACTTACCTATCGACGGGAACTCATACCCATGAGC
ATCTACAGAAAATGCATGGCCGTGAACCTTCTCGGAACTGTCGAGGTACCAAGGCGTTTCTGCCTCTA
CTTAGAAAGTCCAAGGGGAGGCTGGTGAACGTCAGCAGCATGGGAGGCACGGTCCACTTCAAATGACA
TCAGCTTATGCAGCCACAAAGGCAGCTCAACCATGTTCTCAACAATCATCAGACAGGAGCTTGACAAA
TGGGGAGTTAAAGTTGTGACCATCAAACCCGGAGGCTTCAAACAACATCACAGGCTCACAGGACATT
TGGGATAAAATGGAGAAGGAAATCCTGGACCCTTTTCAAAGATATTCAGGAGAACTATGGCCAGGAC
TACGTCCATACAGAAAGCTCATATCCGACCTTGAAGAGAGGTCCAACCCGGACATCACCCCTGTG
CTTCGGGACATCCAGCATGCCATTTCTGCAAGGAACCCCTTCTCTTTTATTACCAGGGCGAATGGCT
TACCTGTGGGTCTGCTTAGCAGCCTACTGCCCCACCAGCTTACTTACTATGTTATAAAAAAAGTTTTT
TATCCACAACCCACGCCGAGAGCTTTAAGGACAGTGCAC
ACGCGTACGCGGCCGCTCGAGCAGAAACTCATCTCAGAAGAGGATCTGGCAGCAATGATATCCTGGAT
TACAAGGATGACGACGATAAGGTTTAAACGGCCGGC
```



[View online »](#)

**Protein Sequence:** >Peptide sequence encoded by MR231988  
 Blue=ORF Red=Cloning site Green=Tag(s)

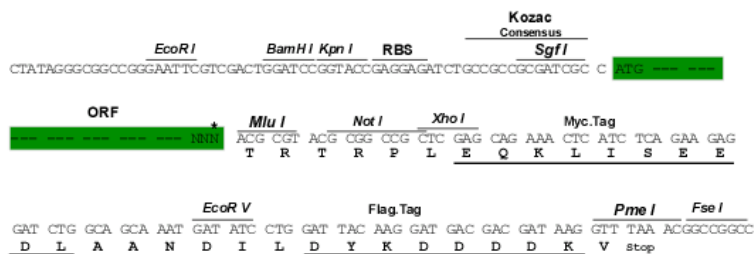
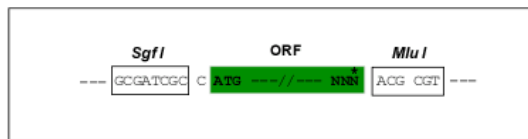
MSPFASESAWLCLAAAVALGGTLLCGCRSGRQLRSQAVCLAGLWGGACLLSL SLLCTLFLLSVACFLLL  
 YMSSSDQDLLPVDQKAVLVTGADSGFGHGLAKHLDKLGFVTFAGVLDKEGPGAEELRKHCSERLSVLQM  
 DVTKPEQIKDAHSKVTEKIQDKGLWAVVNNAGVFHLPIDGELIPMSIYRKCMAVNFVGTVEVTKAFLPL  
 LRKSKGRLLVNVSSMGGTVPLQMTSAYAATKAALTMFSTIIRQELDKWGVKVVTIKPGGFKTNITGSQDI  
 WDKMEKEILDHFSKDIQENYGDYVHTQKLIIPTLKERSNPDITPVLRDIQHAISARNPSSFYYPGRMA  
 YLWVCLAAYCPTSLLDYVIKKGFPQPTPRALRTVH  
 TRTRPLEQKLISEEDLAANDILDYKDDDDKV

**Chromatograms:** [https://cdn.origene.com/chromatograms/ja4709\\_a05.zip](https://cdn.origene.com/chromatograms/ja4709_a05.zip)

**Restriction Sites:** SgfI-MluI

**Cloning Scheme:**

Cloning sites used for ORF Shuttling:



\* The last codon before the Stop codon of the ORF

**ACCN:** NM\_008290

**ORF Size:** 1143 bp

**OTI Disclaimer:** The molecular sequence of this clone aligns with the gene accession number as a point of reference only. However, individual transcript sequences of the same gene can differ through naturally occurring variations (e.g. polymorphisms), each with its own valid existence. This clone is substantially in agreement with the reference, but a complete review of all prevailing variants is recommended prior to use. [More info](#)

**OTI Annotation:** This clone was engineered to express the complete ORF with an expression tag. Expression varies depending on the nature of the gene.

**Components:** The ORF clone is ion-exchange column purified and shipped in a 2D barcoded Matrix tube containing 10ug of transfection-ready, dried plasmid DNA (reconstitute with 100 ul of water).

**Reconstitution Method:**

1. Centrifuge at 5,000xg for 5min.
2. Carefully open the tube and add 100ul of sterile water to dissolve the DNA.
3. Close the tube and incubate for 10 minutes at room temperature.
4. Briefly vortex the tube and then do a quick spin (less than 5000xg) to concentrate the liquid at the bottom.
5. Store the suspended plasmid at -20°C. The DNA is stable for at least one year from date of shipping when stored at -20°C.

**RefSeq:** [NM\\_008290.2](#), [NP\\_032316.2](#)

**RefSeq Size:** 1280 bp

**RefSeq ORF:** 1146 bp

**Locus ID:** 15486

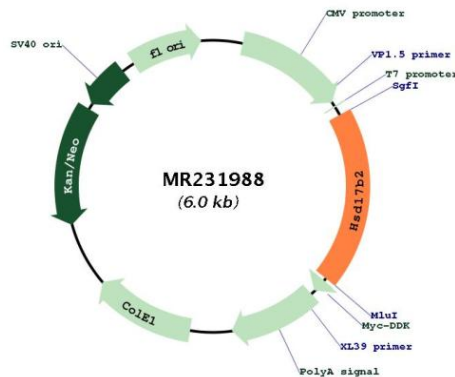
**UniProt ID:** [P51658](#)

**Cytogenetics:** 8 E1

**MW:** 41.8 kDa

**Gene Summary:** Capable of catalyzing the interconversion of testosterone and androstenedione, as well as estradiol and estrone. Also has 20-alpha-HSD activity. Uses NADH while EDH17B3 uses NADPH (By similarity).[UniProtKB/Swiss-Prot Function]

**Product images:**



Circular map for MR231988