

Product datasheet for MR231925

Frem1 (NM_001198811) Mouse Tagged ORF Clone

Product data:

Product Type:	Expression Plasmids
Product Name:	Frem1 (NM_001198811) Mouse Tagged ORF Clone
Tag:	Myc-DDK
Symbol:	Frem1
Synonyms:	BC037594; crf11; D430009N09; D630008K06; eye; eyes2; heb; qbrick
Mammalian Cell Selection:	Neomycin
Vector:	pCMV6-Entry (PS100001)
E. coli Selection:	Kanamycin (25 ug/mL)
ORF Nucleotide Sequence:	>MR231925 representing NM_001198811 Red=Cloning site Blue=ORF Green=Tags(s)

TTTTGTAATACGACTCACTATAGGGCGGCCGGAATTCGTCGACTGGATCCGGTACCGAGGAGATCTGCC
GCC**CGATCGCC**

ATGCACTCTCCAGGCTGCACTGGGCCAAAGGCTCAGTGGTTCTTGCTGCTCCAGCTGCTTCTGCTGCACC
TGGACCGGGTCAGTGCCACCTTCATCAGCATCAACCGGGGCTGAGGGTGATGAAGGTAGTTCTGCCTT
CCTGTCTGGAGATCACCTGAGGGTTGCAGTCCCTAAAGAAAAGGACGCCTGCAGACTGGAGGTGGTATG
AACGAGCCCGTAACCCAGAGGGTTGGGAACTCTCCACAGGTCTTTGATTGCCATTTCTTCCCAACG
AAGTGAAGTATGTTCAATGGATGCCAATTCTGGATGAAGACTCTGTGAAGCTTAGACTTTACAGGTT
TACTGAAACAGACACCTTCATGGAAACCTTCTCTTGGCGGTTTATCTTGTGGAACCAGACTGTAACATC
ATCCGTATGAGCAGTAATGTGTTGGAAGTGAATCTATGGCTTATCGCAAGCCATTGATAAGAACC
TGCTCCAGTTTGATTATGATAGGACTGCCAGCCTGGATTGCACCATCAGACTAGACCCACTGAGGACTCA
GCTGCCAGCTCACGGCAAGCTGGTCTGGTGAATCGTAAGTCAGAGGGGCTCGTGGAGATCAGCCACAC
AGCTTCTCTCTGAGACAGAGCTAGGGGCTGGACTGAAGTGTCCAGATGGAAGCTGTGCCCTGGAATTGA
AGCAAGTGGAAGTCTGAAAGTGAGCTGTGAGGAGTTTCTGCTGACGGGGTTTCACTACCAACACATGCA
GCCCCCTTACCCAACATTGATTACATCCCATTTCAGTTGGATCTCACCGACAGAAGGAGCAAAACCGTA
TACAAGTCAGAGAGTGGTGGTTCATATCAGAGTTGGCATTCCCTAACCGTGGTCCCAAGGGGCTG
CATTATGGCCATGTTTGTCTGGAGGTGGACCGTTTCACTGACCCCTCTGACAACCTCCGTTCTGGA
CTGTGAGGAGGATGAGACTCCGAAACCTTGTGGTGTCAACATCACTAAAGCCCACTCCAGGCTAT
GTGACCCACTGCTGGATCATACCAGACCCATCTTTCATTACCTGGAAGGATCTCAGTGACATGCAAG
TTGCTACCAGCCACCAACAGCAGCCACCCTGAGAGGAGACATTACACGATGGAGCTGGAGGTGTACGA
CTTCTTTGAGAGGAGTGCCCCATCACTGTCCACATCTCCATCAGAACAGCAGACACGAATGCACCA
CGGGTGTCTTGAATACAGGTTTGAATCTCTAGAGGGGAGTCTCGGGCCATCACTTGGGAACAATTT
AGATCGTTGACAATGATGACATTGGTGTGTCAGTTGGTACCATTGGTGGCTGCAGCATGGACGGCT
TACAGTACGAGAGGGAAAGGATTTCTTCCAGTACTGACCTCAAGCTGGAGTTGCCGCTATCAT



[View online >](#)

CACGATGACAGTGATACCACAAAGACTTTGTGGCTTTCAGGATATTCGATGGCCACCACAGCAGCCACC
 ACAAGTTTCTATCAACATCTTGCCATAAGATGACAGCCCCCATTCTCATACCAATGTCGTGATTGA
 ACTAGAAGAGGGGAAGACCATCTTGATCCAAGGTCTATGTTGAGAGCTTCAGATATGGACTCCAGTGAT
 GACTACATCTTCTTAATATCACAAAGTTTCCACAGGCTGGGGAGATCATGAAGAAGCCAGGGCCAAAGC
 TGATAGGTATCCTGTCCCTGGCTTCTGCAGAGAGACCTGTTCCAGTGAATCATTTACTATCGTCACTT
 TGGTGGAGAAATCTTTGAAGATTCCTTTGAATTCGACTGTGGGACAGCCATGAGCCTCCAAATCTCTCA
 GTGCCACAGGTGGTGACAATTCATCACTCCAGTAGTAGTACCAGCTTCTAAAGAAGCTCCTGGCATT
 CCCGGCATTGGTTGTCAAGGAAACAGAGGTGGCCTACATCACTAAAAAGCACCTACATTTCTAGACAT
 GGAATCCCGTGATGGGAACTCATCTACACAGTAACACGCCCTCCATGTTTCTCCTTCAGCCACAGACAC
 TTGGATGCTGGGAAGCTATTCATGGTGGACAGCATACCAAAGCTAACAAAAATCCGACAGCCCCAGGGC
 TAAGTTCACTTACTCAGCATGCCGTGAACCATATGAAAGTGGCCTACATGCCACCCATGCAAGATATAGG
 CCCCTCCCCTCGACATGTGCAGTTCACAGTGTCTGTGAGTAAACCAGCATGGAGGTGCTTTGCATGGAATC
 TGCTTCAACATCACAGTTCCTCCAGTGGACAACCAGGTTCCCGAGGTATTCACCAACACCCTGAGAGTGG
 TCGAGGGCGGTGAGTGCACCATCAGCACAGAGCACATTTTGGTTTCTGATGTGGACACCCCGCTAGACAG
 CATCAGCCTCTCTTAAGGAGAGGCCCTGTCATGGCGGGGTAGAGCTGGACGGATTTCTCTAAACCCA
 AGAGGCACATTTCTTGCGGAGACCTCAATACCTTAAAAGTTTGGTATCAACATGATGGATCTGAGGTTT
 TTCAGGATGAGATATTTTGGAGGTCACAGATGGCACAATTCAGCAGCATTTGTTCTCCACATTGAGGT
 GTTCCCTGTGAATGATGAGCCACCATTCTGAAGGCTGACCTCATCCCCATGATGCACTGCTCTGAGGGT
 GGAGAGGTGACCATACCCCTGAATACATTTCCGCTACTGATGCAGACAGCGATGACTTAGAACTGCTGT
 TTCTGATTGCCGAGAGCCTCAGCATGGAGTGGTGAAGAAAGGCTGGACTTCACGTGGACAGGTTCTCTCA
 GGGAGATGTATCTCAGGGGCTGTGACATAACAACATACAGGTGGCGAGATTGGCCTTGAACCTTGTCT
 GACACTTGTGATTTGGTGGTTTCGGATGGTGAAGCTGACCCTTTGATGAACGGCTGTTGCTACGATGGAC
 CTGATTCATCTGTTCTCTTCAATAGTCCTTCCCACATACCAGCTCAACATCACAGTACATCCAGTCCGA
 CAACCCAGCCACCTTCAATTATAATAGGTAGGTGCTCACAGTGGATGAAGGCTTCTCAGCAGCCCTTACT
 ACTCATCACTTGACTGTTGTTGATTGGGACACTGCCCGGATGACTTAAAATTCATGTTGGCTTCTCAGC
 CCCAGTTTGGCTACTTAGAAAACGCACTGCCTTCTGCAGGCTTTGAGAAAAGTAACATCGGCATAAGGAT
 AGCCTCATTCCAGTGGACAGACATGAAGGCTTCACACATTAACTATGTGCAGTCCAGGCACCTGAGAGTG
 GAACCAACTGCTGACCAGTTCACAGTATATGCCACAGACGGGAAGCATCGCTCCTTGAGACAACATTTT
 ACGTTATCATCAACCCACAAACGATGAAGCTCCTGACCTTGACGTACAGAACATCACTGTGATGAGGG
 GCACATGGTAGAACTGGATTCTCCATCATCAGTGTACTGACAGGGATATCCCAAGGACCCCTTGCTC
 TTCAGCATCGCTCTAAGCCCCAGCAGGCTGCTCGTCGATGCTGCCATCAGCAAGGACTCCCATCAGA
 TCAAGCAGCTGCAACACGAAATCCACAGCTTCTCCGTGGACCTTCTCAAGAATGGAATGAAGCTGGTCTA
 TGCCACGACGACTCAGAGAGCTGCTGTGATAACTTCGTGATCCAGTTGTGACAGCGGAAACATAAAATC
 CTTAAAACCATCTCAGTAAACATTACCCAGTGAATGACGAGACACCAACGCTAAGCAAGAAGGCTGAAA
 TCTCAATGGCTGTGGGCGATACTCGCGTCTGTCTAGTGTGTTCTTTCAGCCACAGATAAAGACTCGCC
 CAGAGAGAAGATTCACTATGATTTTGAAGACTTCCCCAAAATGGACAACCTCAACTAAGATAGGGAGG
 GACTGGTCCCTCTCCACTGGCATGCAGTGCACCCAGGAGGATGTGGACCTGAACTTGCTAAGATACA
 CGCATGCTGGTAAAACGGACTCCCAGGATGGAGACAGCTTACCTTCTACCTCTGGGATGAGGACAACAG
 GTCACCTGCATTTGACTGTCACATCATCATTGAAGACATGGGCAAAGGTGATATTGTCATTCATGCAAAA
 CCACTCGTGGTAGTCAAAGGTGACAGAGGTCTCTTGACGACTGCCACCCTTCTGGCTGTGGATGGAGCAG
 ACAAGCCTGAGGAACTGCTCTACCTCATCACTCCCCACCACGGCATGGCCAAGTGGAGTACGTCCACTC
 TCCTGGAGTCCCCATTGCCAGCTTCAGCCAAATGGACATAGCAGGACAGACAGTGTGCTACATACACAAG
 AGCAGGACAGCTGTCCCCACTGACAGCTTCAGATTTACCATCAGCAATGGACTGCAGACCCAGCGTGGGG
 TGTTTGAATCACACTGCAGACTGTGGACAGCGCCTTGCTGTGCTGACCAAGAACAAAAGGCTGAGGCT
 AGCCGAAGGGGCCATGGGCTCCTGTCCGCTGATCACCTTCAGCTGACTGACCCCGACACACCTCCAGAG
 AACCTGACCTTTTCTGGCTCAGCTCCCACGCCAGGGTACCTTCTCTGAGAGGGAAAGCACTCCAAC
 ACAACTTCAACCCAGCAGATGTGGACAGCGGGGGCGTGGCCTACCAGCACTCAGGAGGGCGGCCGGGA
 GGACTATTTTACTTTTCTAGCCACAGACAGGAAGAACCAAGGCTTTGTTGTGGATGGGAAAGTTCAGAAA
 GAGCCTGTTCTGCTTCAATCCAGTGGATCAGCTGGACAAGGCAGCGCCCCGTATCACACACTGCACT
 CCCCTACTCAAGTGGGGCTTTGAAAAATGGCTGCTATGGGATTTACATCACTTCCCGTGTGCTGAAGGC
 ATCAGACCCTGACACAGAGGATGACCAGATCATCTTAAGATTTTACGAGGCCCATTTGTACGGACGTCTG
 GAGAACAACAACAGGTGAATTCATCCACGAGCGATTTAGCCAGAAGGACTTAAGCCATAAGACCATCC

TTTACATCATAAACCTTCTTTGCAAGTGACTCCGATATCCTGGAATTCAGGCCATGGACCCACAGG
GAACACTGCCACTCCCCAGAGCTTGACTTGAGATGGTCGTATATTGAATGGGCCAGACTGCATATGAG
GTTTGTGAGAATGTGGGCTTATTGCCCTTGAAGTTACCAGAAGGGGATATCCCATGGACTCAGCCTTTG
TGGGTGTAGAGGTTAACCAAGTGTACAGTTGAAAAGATTTTACTGTCACTCCATCCAACTGCT
TCAATTTGACCCAGGAATGTCAACTAAGATGTGGAATATAGCAATTACCTATGACGGATTAGAGGAAGAT
GATGAGGTCTTTGAAGTAATCTGAACCTCCCTGTGAATGCGGTCTTGGCACGCAGACAAAAGCGGCGG
TGAAAATTTGGACTCAAAGGAGGACGGTGCCATCCTTCAAATTCCTTCAACCAAGCAAGCACAGCAC
GTGGGGGAAGGGCCCTTGGCATCCGCTGCCCTCAGGCTCATCCTCGCTCACCCTTCAGGTTCTCCTCTT
CTGAAAAGGCCTCCTCCATCTTTCACCAGTGGAGATGCTCTTCAGGGTTTTGGTCTCACCGACCTCACTC
AAAGGAAGACAATGACCCAGGGGAATGGCAATCAGTTCTCCATCCTCTGTTTGTAGAAAATGGGACAGA
CACCATCTACAATTACCATGGTATAGTTTCCTTAAAAGTACAGGGGCGACAGATTCTCAGCTCACAAACGG
AAGGCCAAAATATCCATTGTTAGTCAGCCACAGAGGACAATCAAGGTGGCAGAGCTGCCTCTAGCTGATA
AGGTGGAATCCACAAGTATTTGCACTTCTCAGACAGGGTCTGCGGCCCTTGTTCAAAAGAATTGTTT
TGTGGACTTAAAGGGACTCTTTCATTTTGAAGAAAGCACCCACAGATTGTATCAATGTGATGGGATCTCC
TGGAAAGCCTGGAGCCCCAAACCAAGGGGCTGGAGGACAGATCCTGCCAGGTGGATGGCTCCTTCATT
CTGGCTACTGTCACATCTTGGTCAAGACAGAAAGGCACCTGGACCACAGCTACCCGAGCTTGACAGAGA
ACAGCACCAGGGCGACCTTGTGACCGTACTCTCCAGAAGGCATATGCAGTGGCTATGGGCGATGAGTGG
AGAAAACCTTCTGGATAGGCTTGAAGAACCAACCGAGGACTGGCCACTGGGAGTGGATCGGAGGTGAAC
CTGTTGCTTTTACCAACTGGAGGAGAGGGGCCCTCTGCACCCAAAACCTGGAAAGAAGTGTCTTTGGT
TCAGAAAAGAGGACAATGGCAGACAAAGAAGTGTAGCAAAGGCAAGGCTCACAATTTTGTGTGCTCAAGG
AAACTC

ACGCGTACGCGGCCGCTCGAGCAGAACTCATCTCAGAAGAGGATCTGGCAGCAAATGATATCCTGGATT
ACAAGGATGACGACGATAAGGTTTAA

Protein Sequence:

>MR231925 representing NM_001198811
 Red=Cloning site Green=Tags(s)

MHSPGCTGPKAQWFLLLQLLLLHLDRVSATFISINRGLRVMKGSSAFLSGDHLRVAVPKEKDACRLEVVM
 NEPVTQRVGLSPQVFDCHFLPNEVKYVHNGCPILEDSDSVKLRLYRFTETDFTMETFLLRVYLVEPDCNI
 IRMSSNVLEVFTEFYGLSQAIDKNLLQFDYDRTASLDCTIRLDPLRTQLPAHGKLVVVRKSEGPRGDQPH
 SFFSETELGAGLKCPDGSCALELKQVASLKVSCEEFLLTGFHYQHMQPPSPNIDYIPIQLDLTDRRSKTV
 YKSESAWLPVYIRVGIPNQVPRAAFMAMFVLEVDQFILTPLTTSVLDCEDETPKPLLVFNITKAPLQGY
 VTHLLDHRPISSTWTKDLSDMQVAYQPPNSSHPERRHYTMELEVYDFFEFERSAPITVHISIRTADTNAP
 RVSWNTGLNLLLEGQSRITWEQFQIVDNDIGAVQLVTIGGLQHGRLLTVREGKGFLLTVTDLQAGVVRYH
 HDDSDTTKDFVAFRIFDGHSSHHKFPINILPKDDSPFLITNVVIEELEGKTIILIQGSMRASMDSSD
 DYIFFNITKFPQAGEIMKKPGPRLIGYPVPGFLQRDLFSGIYYRHFGGGEIFEDSFEFVWDSHEPPNLS
 VPQVVTIHIPTVDDQLPKEAPGISRHLVVKETEVAYITKKHLHFLDMESRDGELIYTVTRPPCFSFSHRH
 LDAGKLFMVD SIPKLTKNPTAPGLSSFTQHAVNHMKVAYMPMQDIGPSPRHVQFTVSVSNQHGALHGI
 CFNITVLPVDNQPEVFNTRLRVVEGGQCTISTEHLVSDVDTPLDISLSLKERPLHGGVELDGFPLNP
 RGTFSWRDLNLTQVWYQHDGSEVLQDEIFLEVTGTNSAAFVLAHIEVFPVNDPEPILKADLIPMMHCSEG
 GEVITITPEYISATDADSDDLELFLIAREPQHGVVRKAGLHVDRFSQGDVVISGAVTYKHTGGEIGLEPCS
 DTVVLVSDGEADPLMNGCCYDGPDSVPLHKSFTYQLNITVHPVDNQPPSIIIGRMLTVDEGFSAAIT
 THHLTVVDWDTAPDDLKFMLASQPQFGYLENALPSAGFEKSNIGIRIASFQWDMKASHINYVQSRHLRV
 EPTADQFTVYATDGKHSRLETTFHVIINPTNDEAPDLAVQNITVYEGHVELDSSIIISATDRDIPKDLL
 FSIALKPQHGLLVDAAISKDSHQIKQLQHEIHSFVLDLLKNGMKLVYAHDDSESSADNFVIQLSDGKHKI
 LKTIISVNIPTVNDPTLTKKAEISMAVGDTRVLSAVLSATDKDSPREKIHVYFERLPQNGQLKIGR
 DWVPLSTGMQCTQEDVDLNLRYTHAGKTDSDQDGSFTFYLVWEDNRSAPFDCHIIIEDMGKGDIVIHAK
 PLVVVKGDRGLLTTATLLAVDGDAPKPEELLYLITSPRHHGQVEYVHSPGVPIASFQMDIAGQTVCIHK
 SRTAVPTDSFRFTISNGLQTRGVFEITLQTVDSALPVLTKNKRRLAEGAMGLLSADHLQLTDPDTPPE
 NLTFFLAQLPRHGYLFLRGKALQHNFTQRDVSQGVAYQHSGGGAREDYFTFLATDRKNQGFVVDGKVKQ
 EPVRFITIQVDQLDKAAPRITHLHSPQVGLLKNQCYGIYITSRVLKASDPDTEDDQIIFKILRGPLYGRL
 ENTTFTEGFIHERFSQKDLSHKTIILYIINPSLQVTSDILEFQAMDPTGNTATPQSLDRWSYIEWAQTAYE
 VCEVGLLPLEVTRRGYPMSAFVGVVQVVSATVGKDFTVTPSKLLQFDPMSTKMNIAITYDGLLEED
 DEVFEVILNSPVNAVLTQTAAVKILDSKGRCHPSNSFNQSKHSTWGKGPWHPLPSGSSSLTTSQSPL
 LERPPPSFTSGDALQGFGLTDLTQRKTMQGNKSVLPSSVCRNGTDTIYNYHGI VSLKLEGRFSAHKR
 KAKISIVSQPQRTIKVAELPLADKVESTTDLHFLRQGLRPLFPKNCSVDLKGLFHFEESTHRLYQCDGIS
 WKAWSPQTKGLEDRSCPGWLLHSGYCHILVTRQKGTWTTATRACREQHGGDLVTVLSRRHMQLWAMSG
 RKPFWIGLKNQPRTGHWEWIGGEPVAFNTWRRGAPLHPKPGKNCALVQKRQWQTKNCSKGAHNFVCSR
 KL

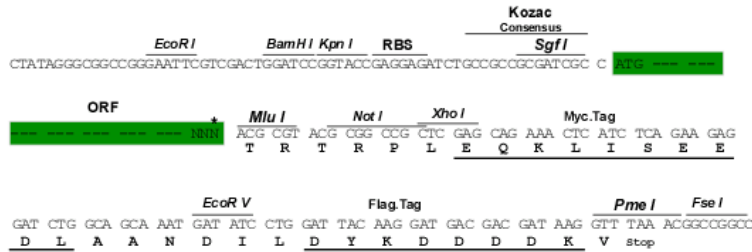
TRTRPLEQKLI SEEDLAANDILDYKDDDDKV

Restriction Sites:

Sgfl-MluI

Cloning Scheme:

Cloning sites used for ORF Shutting:



* The last codon before the Stop codon of the ORF

ACCN: NM_001198811

ORF Size: 6516 bp

OTI Disclaimer: The molecular sequence of this clone aligns with the gene accession number as a point of reference only. However, individual transcript sequences of the same gene can differ through naturally occurring variations (e.g. polymorphisms), each with its own valid existence. This clone is substantially in agreement with the reference, but a complete review of all prevailing variants is recommended prior to use. [More info](#)

OTI Annotation: This clone was engineered to express the complete ORF with an expression tag. Expression varies depending on the nature of the gene.

Components: The ORF clone is ion-exchange column purified and shipped in a 2D barcoded Matrix tube containing 10ug of transfection-ready, dried plasmid DNA (reconstitute with 100 ul of water).

Reconstitution Method:

1. Centrifuge at 5,000xg for 5min.
2. Carefully open the tube and add 100ul of sterile water to dissolve the DNA.
3. Close the tube and incubate for 10 minutes at room temperature.
4. Briefly vortex the tube and then do a quick spin (less than 5000xg) to concentrate the liquid at the bottom.
5. Store the suspended plasmid at -20°C. The DNA is stable for at least one year from date of shipping when stored at -20°C.

RefSeq: [NM_001198811.2](#)
RefSeq Size: 9524 bp

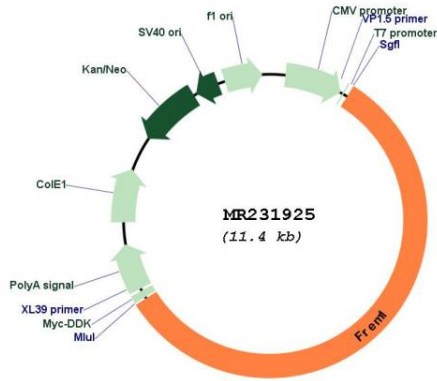
RefSeq ORF: 6519 bp

Locus ID: 329872

UniProt ID: [Q684R7](#)

Cytogenetics: 4 C3
MW: 243 kDa
Gene Summary: Extracellular matrix protein that plays a role in epidermal differentiation and is required for epidermal adhesion during embryonic development.[UniProtKB/Swiss-Prot Function]

Product images:



Circular map for MR231925