

Product datasheet for MR231870

Tsc2 (NM_001286716) Mouse Tagged ORF Clone

Product data:

Product Type: Expression Plasmids
 Product Name: Tsc2 (NM_001286716) Mouse Tagged ORF Clone
 Tag: Myc-DDK
 Symbol: Tsc2
 Synonyms: Nafld; Tcs2
 Vector: pCMV6-Entry (PS100001)
 E. coli Selection: Kanamycin (25 ug/mL)
 Cell Selection: Neomycin
 ORF Nucleotide Sequence: >MR231870 representing NM_001286716
 Red=Cloning site Blue=ORF Green=Tags(s)

TTTTGTAATACGACTCACTATAGGGCGGCCGGAATTCGTCGACTGGATCCGGTACCGAGGAGATCTGCC
 GCCGCGATCGCC

ATGGCCAAACCAACAAGCAAAGATTCCGGCTTGAAGGAGAAGTTCAAGATACTGTTGGGATTGGAAACAT
 CGAGGCCAAATCCAGGTGTGCAGAAGGCAAACAGACTGAGTTTATCATCACATCGGAAATCTTGAGAGA
 ACTGAGTGGTGAATGCGGCTCAACAATCGCATCCGAATGATAGGGCAGATCTGTGATGTGGCAAAAAC
 AAGAAGCTTGAGGAGCATGCAGTGGAGGCACTTTGGAAGGCTGTCTCAGACTTGCTACAGCCAGAGCGGC
 CACCAGAGGCCCGCATGCAGTTCTCACCTTATTGAAGGCCATTGTACAGGGACAGGGTGATCGTTTGGG
 AGTTCTCAGAGCCCTCTCTTCAAAGTGATCAAGGACTACCCCTCCAATGAAGACCTCCATGAAAGGCTA
 GAAGTTTTTAAGGCCCTCACAGACAATGGGAGGCACATTACCTATTTGGAAGAAGAACTGGCAGAGTTTG
 TCCTGCAGTGGATGGATGTTGGCTTGCCTCAGAATTCCTTCTGGTACTGTCAACCTGGTCAAGTTCAA
 CAGCTGTTACCTTGACGAATACATTGCATCAATGGTTCACATGATTTGTCTGCTATGCATCCGGACAGTG
 TCCTCTGTGGACATTGAGGTGCCTTGAAGTGTGGATGCTGTGGTCTGCTACAACCTGCTTACCAGCCC
 AGAGCCTGCCTCTGTTTATTATCACCTGTGCCGACCATCAATGTCAAGGAGCTGTGTGAGCCTTGCTG
 GAAGTTGATGCGTAACCTTCTGGGCACCCACCTGGGCCACAGCGCCATCTACAACATGTCCCGCATCATG
 GAGGACAGATCCTACATGGAAGATGCCCACTGCTGAGAGGAGCTGTGTTCTTTGTAGGGATGGCACTCT
 GGGGAGCTCACCGGCTCTACTCTCTCAAGAACTCCCCACATCTGTGCTGCCGTCTTTTTATGAGGCTAT
 GACCTGTCCCAATGAGGTGGTGCATATGAGATTGTTCTGTCCATAACAAGACTCATCAAGAAGTATAGG
 AAGGAGCTCCAGGCTGTGACATGGGATATTCTGCTGGACATCATTGAACGACTACTTCAGCAACTCCAGA
 ACCTGGACAGCCCGAACTCAAGACCATCGTCCATGACCTGCTGACCACTGTGGAGGAGCTATGTGACCA
 GAACGAGTTCATGGCTCGCAGGAAAGATACTATGAAGTGGTGGAGAGCTATGCAGACCAGAGACCTGAA
 TCCTCTCTTAACTTGATATCTACAGAGCCAGTCCATCCACCCTGCCAAGGATGGCTGGATCCAGA
 ACTTGAGTGTGATGGAGAGGTTCTTCAAGGAATGAGTGCCGACGCGCGTGGCGATCAAGGTGTTGGA
 TGTTCTGTCTTCTGCTGCTGATCAACAGGCAGTTCTATGAGGAGGAGCTGATTAACCTCGTGGTGCATC
 TCGCAGCTCTCCACATTCGAGGATAAGGACCATCAGGTCCGAAAGCTGGCTACTCAGCTGCTGGTGG



[View online >](#)

ACCTGGCAGAGGGGTGCCACACCCACCCTTCAACAGTCTGCTGGACATCATTGAAAAGGTGATGGCGCG
 CTACTIONCTCCACCCCGGAGCTGGAAGAAAGGGACCTGGCCATGCACTCGGCCTCCCTGGAGGACGTG
 AAGACCGCGTCTGGGGCTCCTGGTACCTTCAGACCAAGCTCTACACCTTGCTGCCAGCCACGCCA
 CTCGAGTGTATGAGAGCCTCATTAGTCACATCCAGCTCCATTACAAGCACGGCTACTCCCTGCCATTGC
 TAGCAGCATCCGACTACAGGCCCTTGGCTTCTGCTGCTACTGCGGGTACTCGCTGCATCGACTGGGC
 CTGCCCCAACAGGATGGGGTCTGAGATTCAGCCCTTACTGCCTCTGTACTGCACTGGAATGGATAGAG
 CCTCAGAGAAGAAAGCCAGTGGGCCCTTCCACTCCAAGTGGGCCCTAGCCCTGTGCCTATGGGCC
 TGCTGTGCGGCTCGGCTACCTACCTACTCCCTGCTCTTCCGTGCTGTTGCAGTGTGGAAGCAGGAG
 AGCGACTGGAAGGTGCTGAAGCTGGTGGCTCAGCAGGCTGCCGGAGTCACTGCGCTACAAAGTCTCATCT
 TCACCTCCCCTGCAGTGTGACAGGCTGTCTTCTGCCCTCTGCTCCATGCTTTCAGCTCCAAAGACCTT
 TGAGCGGCTCCGAGGTACCCAGAAAGGCTTCTCGAGAAGTGCCTGCACTGGCTGTGGTCCCCTGCTA
 ACAGCATTAAATCTTATCACAATATTTGACAAGACCAGACAGCGTGAGATGGTGTACTGCTGGAAC
 AAGGCCTATCTACCGCTGCGCCAGCCAGTGGTGGTAGCCTTGCCATCTGCAGTGTGGAGATGCCGA
 CATCATCATCAAGCGCTTCTGTCTGGTGGTGAAGCTCACACATTTCTGCCACAGCCAGCATGGCC
 ATCCCGCTCCTGGAGTTCCTGTCTACTTTGGCCAGGCTGCCACCTCTACAGGAATTTGCTGCAGAGC
 AGTATGCCAGCGTGTGGCCATCTCTTGGCCATACACCAACCCCTCAAGTTCACACAGTACATTGTGTG
 TCTGGCTCACCACGTATAGCCATGTGGTTCATCAGGTGCCGACTGCCCTTTCGGAAGGATTTCTGCCCT
 TATATCACTAAGGGTTTGCCTTCCAATGTCTCTCTGCTTTTGTATGATACCCCTGAGAAGGACAGTTTCA
 GAGCAGGAGCACCAGTCTTAAAGAGACCCAAAAGCAGAATACAGACATCCCTTACGAGCGCCAGCCT
 GGGGTCTGCGGATGAGAAGTCTATGGCCAGGCTGATGACAAGTGAAGAATCTCCACTTGGAGCTCACA
 GAAACATGTCTGGACATGATGGCCGATATGTGTTCTCCAATTTCACTGCAGTCCCAAGAGGTCCCCTG
 TGGGAGAGTTCCTCTGGCAGGGGTAGGACAAAACCTGGCTGGTGGAAACAAGCTTGTACTGTGAC
 AACAAGTGTGGAACTGGTACACGGTCTGCTGGCCCTGGACTCTGGGGACTGCAGGTTGGCTGGAT
 TCAAGCTCTGATCCTAGCACACATGTGAGGCAGACAAAGGAAGCACCCGGCCAAACTGGAGTCCAGGCTG
 GGCAGCAGGTGTCCCGTGGGGCCGGGACCGGGTCCGCTCCATGTGAGGGGGCCATGGCCTTCGAGTTGG
 TGTCTGGATACTTCACTCCCTATTCCCAGGTGGCTCTGCTTCTCTGGGACCAGACGGCGGTGGCA
 GCGAAGCCCGAGAAGCCCTGCAGGAGCCAGCTTCCAACAGCAGAGAAGACGAATCTGGCAGCCTATG
 TGCCTTTGTTAACCCAGGGCTGGCAGAAATCTTAGTCCGACAGCCACAGGAAACACCAGCTGGCTGAT
 GAGCTTGGAGAACCCTCAGCCCTTCTCCTCAGACATCAACAACATGCCCTGCAAGAGCTGTCCAAT
 GCCCTTATGGCTGCTGAACGTTTCAAGGAGCACCAGGACAGGCCCTGTACAAGTATTGTCACTGCCAG
 CGGCTGGCACCAGCAAGCCTCTACTCTCCACGCTTAATACAGACTCAGCCATGGTCTTGGAGAGGG
 AAGTCCAGGAGAGACTCAGGTGCCAGTGGAGCCCCCGAATTGGAGGATTTGAGGCGGGCTTAGGTACA
 GACAGGCACTGCCAGCGGCTGACACCTACAGCCGGTATCCTCAGCATCTAGCCAGGAAGAAAAGTCCC
 ATTTGGAGGAGCTTGTGCAAGGGGTATCCCCATTGAGCGGGCCATCTCCTCTGAGGGGGCTCGGCCTGC
 CGTGGACCTCTCCTTCCAACCTCACAGCCTTTGAGCAAGTCTAGCTCTTCTCCGGAGTTGCAGACCTTA
 CAGGACATCCTTGGAGACCTAGGGGACAAGATTGATATTGGACGGCTGAGTCTGAGGCTAAGGTCCGGT
 CCCAGTCAGGGATCCTGGATGGGAAGCAGCTACCTGGTCACTACGGGTGAAGAGAGCCGATCACAGT
 CCCACCTGAAGGTCTCTGCCTTCCAGTCTCCCCGCTCCCCAGTGGCCTCCGGCCCGAGGCTATACC
 ATCTCTGATTCCGCTCCATCACGAAGGGGAAAGGGTAGAAAGGGATAACTTCAAGAGCAGAGCTGCGG
 CCTCCAGTGTGAGAAGGTGCCAGGCATCAACCTAGCTTTGTGTTCTACAGCTTACATTCCGCCCTT
 TTTTGGTGTGAGTCCAATAAGCCATCCTATTGCCCAATGAGTCTTTGAACGGTCACTACAGCTGCTT
 GACCAGATTCCATCCTATGACACTCACAAGATTGCTGTCTGTATGTGGGAGAAGGCCAGAGCAGCAGTG
 AGCTGGCCATCCTGTCAAATGAGCATGGCTCTTACAGGTACACGGAGTTTCTGACAGGCCTGGTTCGGCT
 TATTGAGCTCAAGGACTGCCAACAGACAAGGTGACTTAGGTGGACTGGATGTATGTGGCGAGGATGGA
 CAGTTCACCTACTGCTGGCATGATGACATCATGCAAGCTGTTTTCCACATTGCCACCCTGATGCCACCA
 AGGATGTGGACAAGCACCCTGTGACAAGAAACGGCACCTGGCAATGACTTTGTTTCTATCATCTACAA
 TGATTCTGGTGGAGACTTCAAATGGGCACCATTAAGGGCCAGTTCAACTTTGTCCATGTGATCATCACA
 CCGCTGGACTACAAGTGAACCTATTGACCTGCAGTGCAGGAAAGACATGGAAGGCCTCGTGGACACCA
 GTGTGGCCAAGATTGTGTCTGACCGCAACCTGTCTTTGTGGCCCGACAGATGGCCCTGCATGCAATAT
 GGCTCACAGGTACACCACAGCCGATCCAACCCACTGACATCTATCCCTCCAAGTGGATCGCAAGACTC
 CGCCACATTAAGCGTCTCCGCCAGAGGATCCGTGAAGAGGTGCACTATTTCAAACCAAGCTTGCCTCTGA
 TGCACCTCCAGCCACACCAAAGCCCCAGCTCAAGCCCTGAGGCTACACCCACCTATGAACAGGCCA

CGGGAAGCGCCTCATTTCTCCGTGGATGACTTACAGAGTTTGTG

ACGCGTACGCGGCCGCTCGAGCAGAACTCATCTCAGAAGAGGATCTGGCAGCAATGATATCCTGGATT
ACAAGGATGACGACGATAAGGTTTAA

Protein Sequence:

>MR231870 representing NM_001286716
Red=Cloning site Green=Tags(s)

MAKPTSKDSGLKEKFKILLGLGTSRPNPRCAEGKQTEFIITSEILRELSGECGLNNRIRMIGQICDVAKT
KKLEEHAVEALWKAUSDLLQPERPPEARHAVL TLLKAI VQGQDRLGVLRALFFKVIKDYPSNEDLHERL
EVFKAL TDNGRHITYLEEELAEFVLQWMDVGLSSEFLLVNLVKFNCSYLDEYIASMVHMICLLCIRTV
SSVDIEVSLQVLDAVVCYNCLPAESLPLFIITLCRTINVKELCEPCWKLNRLLGTHLGHSAIYNMCRIM
EDRSYMEDAPLLRGAVFFVGMALWGAHRLYSLKNSPTSVLPSFYEAMTCPNEVVSVEIVLSITRLIKKYR
KELQAVTWDILLDIERLLQQLQNLDSPELKTIVHDLLTTVEELCDQNEFHGSQERYELVESYADQRPE
SSLLNLISYRAQSIHPAKDGIQNLQLLMEFRNECRSAVRKVLDFVLLINRQFYEEELINSVVI
SQLSHIPEDKDHQVRKLATQLLVDLAEGCHTHFNSLLDIEKVMARSLSPPELEERDLAMHSASLEDV
KTAVLGLLVILQTKLYTLPASHATRVYESLISHIQLHYKHGYSLPIASSIRLQAFDFLLLRADSLHRLG
LPNKDGVVRFSPYCLCDCMELDRASEKKASGPLSPPTGPPSPVPMGPAVRLGYLPYSLLFRVLLQCLKQE
SDWKVLKLVLSRLPELRYKVLIFTSPCSVDQLSSALCSMLSAPKTLERLRGTPEGFRTDLHLAVVPVL
TALISYHNYLTKTRQREMVYCLEQGLIYRCASQCVALAICSVEMPDIIKALPVLVVKLTHISATASMA
IPLLEFLSTLARLPHLYRNFAAEQYASVFAISLPYTNPSKFNQYIVCLAHHVIAWWFIRCRLPFRKDFVP
YITKGLRSNVLVLSFDDTPEKDSFRARSTSLNERPKSRIQTSLSASLGSADENSMAQADDNLKNLHLELT
ETCLDMMARYVFSNFTAVPKRSPVGEFLLAGGRKTWLVGNKLVTVTTSVGTGTRSLGLDSDGLQGGSD
SSSDPSTHVRQTKAPAKLESQAGQVSRGARDVRSMGGHGLRVGLDTSAPYSPGGSASLGPQTAVA
AKPEKPPAGAQLPTAEKTNLAAYVPLL TQGWAEILVRRPTGNTSWLMSLENPLSPFSSDINMPLQELSN
ALMAAERFKEHRDTALYKSLVPAAGTAKPPTLPRSNTDSAMVLEEGSPGETQVPVEPELEDFAALGT
DRHCQRPDYSRSSASSQEEKSHLEELAAGGIPIERAISSEGARPAVDLSFQPSQPLSKSSSPELQTL
QDILGDLGDKIDIGRLSPEAKVRSQSGILDGEAATWSATGEESRITVPEGGLPSSSPRSPGLRPRGYT
ISDSAPSRGRKRVDRNFKSRAAASSAEKVPGINPSFVFLQLYHSPFFGDESNKILLPNESEFERSVQLL
DQIPSYDTHKIAVLVYGEQSSSELA ILSNEHGSYRYTEFLTGLGRLIELKDCQDPKVYLGGLDVCGEDG
QFTYCWDDIMQAVFHIA TLMPKDVDKHRCDDKRHLGNDFVSIYNDSGEDFKLGTIKQGFNFVHVIIIT
PLDYKCNLLTLQCRKMEGLVDTSVAKIVSDRNL SFVARQMALHANMASQVHHSRNPDTIYPSKWIARL
RHIKRLRQRIREEVHYSNPSLPLMHPPAHTKAPAQAPEATPTYETGQRKRLISSVDDFTEFV

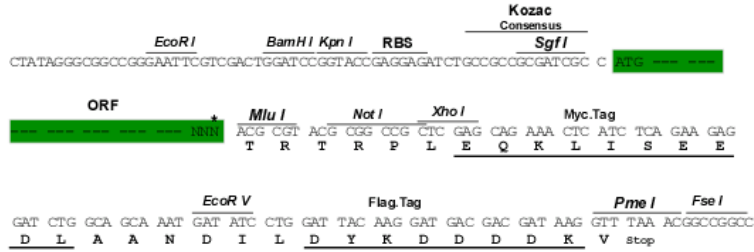
TRTRPLEQKLI SEEDLAANDILDYKDDDDKV

Restriction Sites:

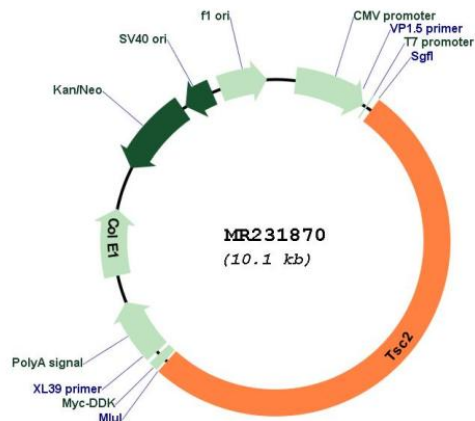
Sgfl-MluI

Cloning Scheme:

Cloning sites used for ORF Shutting:



* The last codon before the Stop codon of the ORF

Plasmid Map:


ACCN: NM_001286716

ORF Size: 5226 bp

OTI Disclaimer: The molecular sequence of this clone aligns with the gene accession number as a point of reference only. However, individual transcript sequences of the same gene can differ through naturally occurring variations (e.g. polymorphisms), each with its own valid existence. This clone is substantially in agreement with the reference, but a complete review of all prevailing variants is recommended prior to use. [More info](#)

OTI Annotation: This clone was engineered to express the complete ORF with an expression tag. Expression varies depending on the nature of the gene.

Components: The ORF clone is ion-exchange column purified and shipped in a 2D barcoded Matrix tube containing 10ug of transfection-ready, dried plasmid DNA (reconstitute with 100 ul of water).

Reconstitution Method:

1. Centrifuge at 5,000xg for 5min.
2. Carefully open the tube and add 100ul of sterile water to dissolve the DNA.
3. Close the tube and incubate for 10 minutes at room temperature.
4. Briefly vortex the tube and then do a quick spin (less than 5000xg) to concentrate the liquid at the bottom.
5. Store the suspended plasmid at -20°C. The DNA is stable for at least one year from date of shipping when stored at -20°C.

RefSeq: [NM_001286716.1](#), [NP_001273645.1](#)

RefSeq Size: 6132 bp

RefSeq ORF: 5229 bp

Locus ID: 22084

Cytogenetics: 17 12.41 cM

MW: 194.5 kDa