

Product datasheet for MR231869

Tsc2 (NM_001286718) Mouse Tagged ORF Clone

Product data:

Product Type:	Expression Plasmids
Product Name:	Tsc2 (NM_001286718) Mouse Tagged ORF Clone
Tag:	Myc-DDK
Symbol:	Tsc2
Synonyms:	Nafld; Tcs2
Vector:	pCMV6-Entry (PS100001)
E. coli Selection:	Kanamycin (25 ug/mL)
Cell Selection:	Neomycin
ORF Nucleotide Sequence:	>MR231869 representing NM_001286718 Red=Cloning site Blue=ORF Green=Tags(s)

TTTTGTAATACGACTCACTATAGGGCGCCGGGAATTCGTCGACTGGATCCGGTACCGAGGAGATCTGCC
GCCGCGATCGCC

ATGGCCAAACCAACAAGCAAAGATTCGGCTTGAAGGAGAAGTTCAAGATACTGTTGGGATTGGAAACAT
CGAGGCCAAATCCAGGTGTGCAGAAGGCAAACAGACTGAGTTTATCATCACATCGGAAATCTTGAGAGA
ACTGAGTGGTGAATGCGGCTCAACAATCGCATCCGAATGATAGGGCAGATCTGTGATGTGGCAAAAAC
AAGAAGCTTGAGGAGCATGCAGTGGAGGCACTTTGGAAGGCTGTCTCAGACTTGCTACAGCCAGAGCGGC
CACCAGAGGCCCGCATGCGATTCTCACCTTATTGAAGGCCATTGTACAGGGACAGGGTGATCGTTTGGG
AGTTCTCAGAGCCCTCTCTTCAAAGTGATCAAGGACTACCCCTCCAATGAAGACCTCCATGAAAGGCTA
GAAGTTTTTAAGGCCCTCACAGACAATGGGAGGCACATTACCTATTTGGAAGAAGAACTGGCAGAGTTTG
TCCTGCAGTGGATGGATGTTGGCTTGCCTCAGAATTCCTTCTGGTACTGTCAACCTGGTCAAGTTCAA
CAGCTGTTACCTTGACGAATACATTGCATCAATGGTTCACATGATTTGTCTGCTATGCATCCGGACAGTG
TCCTCTGTGGACATTGAGGTGCCTTGAAGTGTGGATGCTGTGGTCTGCTACAACATGCTACCAGCCC
AGAGCCTGCCTCTGTTTATTATCACCTGTGCCGACCATCAATGTCAAGGAGCTGTGTGAGCCTTGCTG
GAAGTTGATGCGTAACCTTCTGGCACCCACCTGGGCCACAGCGCCATCTACAACATGTGCCGCATCATG
GAGGACAGATCCTACATGGAAGATGCCCACTGCTGAGAGGAGCTGTGTTCTTTGTAGGGATGGCACTCT
GGGGAGCTCACCGGCTCTACTCTCAAGAACTCCCCACATCTGTGCTGCCGTCTTTTTATGAGGCTAT
GACCTGTCCCAATGAGGTGGTGCATATGAGATTGTTCTGTCCATAACAAGACTCATCAAGAAGTATAGG
AAGGAGCTCCAGGCTGTGACATGGGATATTCTGCTGGACATCATTGAACGACTACTTCAGCAACTCCAGA
ACCTGGACAGCCCGAACTCAAGACCATCGTCCATGACCTGCTGACCACTGTGGAGGAGCTATGTGACCA
GAACGAGTTCATGGCTCGCAGGAAAGATACTATGAACTGGTGGAGAGCTATGCAGACCAGAGACCTGAA
TCCTCTCTTAACTTGATATCTACAGAGCCAGTCCATCCACCCTGCCAAGGATGGCTGGATCCAGA
ACTTGAGTGTGATGGAGAGGTTCTTCAAGAAATGAGTGCCGACGCGCGTGGCGATCAAGGTGTTGGA
TGTTCTGTCTTCTGCTGCTGATCAACAGGCAGTTCTATGAGGAGGAGCTGATTAACCTCGTGGTGCATC
TCGCAGCTCTCCACATTCGAGGATAAGGACCATCAGGTCCGAAAGCTGGCTACTCAGCTGCTGGTGG



[View online >](#)

ACCTGGCAGAGGGGTGCCACACCCACCCTTCAACAGTCTGCTGGACATCATTGAAAAGGTGATGGCGCG
 CTTACTCTCTCCACCCCGGAGCTGGAAGAAAGGGACCTGGCCATGCACTCGGCCTCCCTGGAGGACGTG
 AAGACCGCGTCTGGGGCTCCTGGTACCTTCAGACCAAGCTCTACACCTTGCTGCCAGCCACGCCA
 CTCGAGTGTATGAGAGCCTCATTAGTCACATCCAGCTCCATTACAAGCACGGCTACTCCCTGCCATTGC
 TAGCAGCATCCGACTACAGGCCCTTGGACTTCTGCTGCTACTGCGGGTGACTCGCTGCATCGACTGGGC
 CTGCCAACAAAGGATGGGGTCGTGAGATTCAGCCCTTACTGCCTCTGTGACTGCACTGGAATGGATAGAG
 CCTCAGAGAAGAAAGCCAGTGGGCCCTTCCACTCCAAGTGGGCCCTAGCCCTGTGCCATAGGGCC
 TGCTGTGCGGCTCGGCTACCTACCTACTCCCTGCTCTTCCGTGCTGTTGCAGTGTTGAAGCAGGAG
 AGCGACTGGAAGGTGCTGAAGCTGGTGCTCAGCAGGCTGCCGGAGTCACTGCGCTACAAAGTCTCATCT
 TCACCTCCCCTGCAGTGTGACAGCAGTGTCTTCTGCCCTCTGCTCCATGCTTTTCAAGTCCAAAGACCT
 TGAGCGGCTCCGAGGTACCCAGAAAGGCTTCTCGAGAAGTGCCTGCACTTGCTGTGGTCCCCTGCTA
 ACAGCATTAAATCTTATCACAATATTTGACAAGACCAGACAGCGTGAGATGGTGTACTGCTGGAAC
 AAGGCCTATCTACCGCTGCGCCAGCCAGTGGTGGTAGCCTTGCCATCTGCAGTGTGGAGATGCCGA
 CATCATCATCAAGGCGCTTCTGTCTGGTGGTGAAGCTCACACATTTCTGCCACAGCCAGCATGGCC
 ATCCCGCTCCTGGAGTTCCTGTCTACTTTGGCCAGGCTGCCACCTCTACAGGAAGTTCCTGTCAGAGC
 AGTATGCCAGCGTGTGGCCATCTCTTGGCCATACACCAACCCCTCAAGTTCACACAGTACATTGTGTG
 TCTGGCTCACCACGTATAGCCATGTGGTTCATCAGGTGCCGACTGCCCTTTCCGGAAGGATTTCTGCTCC
 TATATCACTAAGGGTTTGCCTTCAATGTCTCTCTGCTTTTGTATGATACCCCTGAGAAGGACAGTTTCA
 GAGCAGGAGCACCAGTCTTAATGAGAGACCCAAAAGAATACAGACATCCCTTACGAGCGCCAGCCTGGG
 GTCTGCGGATGAGAACTATAGGCCAGGCTGATGACAAGTGAAGAATCTCCACTTGGAGCTCACAGAA
 ACATGTCTGGACATGATGGCCGATATGTGTTCTCAATTTCACTGCAGTCCCAAGAGGTCCCTGTGG
 GAGAGTTCCTCCTGGCAGGGGTAGGACCAAACTGGCTGGTTGAAACAAGCTTGTCACTGTGACAAC
 AAGTGTGGAACTGGTACACGGTCTGCTGGCCCTGGACTTGGGGACCTGCAGGTTGCTCGGATTC
 AGCTCTGATCCTAGCACACATGTGAGGCAGACAAGGAAGCACCAGCAACTGGAGTCCAGGCTGGGC
 AGCAGGTGTCCCGTGGGGCCCGGACCGGTCCTGCTCCTGTCAGGGGGCCATGGCCTTCGAGTTGGTGT
 CCTGGATACTTACAGTCCCTATTCACAGGTGGCTCTGCTTCTTGGACCACAGACGGCGGTGGCAGCG
 AAGCCCGAGAAGCCCTGCAGGAGCCAGCTTCAACAGCAGAGAAGACGAATCTGGCAGCCTATGTGC
 CTTTGTAAACCCAGGGCTGGGCAGAAATCTTAGTCCGACAGCCACAGGAAACACCAGCTGGCTGATGAG
 CTTGGAGAACCCGCTCAGCCCTTCTCCTCAGACATCAACAACATGCCCTGCAAGAGCTGTCCAATGCC
 CTTATGGTGTGTAACGTTTCAAGGAGCACCGGACACGGCCCTGTACAAGTCAATGTGAGTCCAGCGG
 CTGGCACCGCAAGCCTCTACTCTCCACGCTTAATACAGACTCAGCCATGGTCTTGGAGGAGGAAG
 TCCAGGAGAGACTCAGGTGCCAGTGGAGCCCCGAAATGGAGGATTTGAGGCGCGTTAGGTACAGAC
 AGGCAGTCCAGCGGCTGACACCTACAGCCGGTCACTCTCAGCATCTAGCCAGGAAGAAAAGTCCCAT
 TGGAGGAGCTTGTGTCAGGGGTATCCCATAGAGCGGGCATCTCCTCTGAGGGGGCTCGGCCTGCCGT
 GGACCTCTCCTTCAACCCCTCACAGCCTTTGAGCAAGTCTAGCTCTTCTCCGGAGTTGCAGACCTTACAG
 GACATCCTTGGAGACCTAGGGGACAAGATTGATATTGGACGGCTGAGTCTTGGAGGTAAGTCCGGTCCC
 AGTCAGGATCCTGGATGGGGAAGCAGCTACCTGGTCACTACGGGTGAAGAGAGCCGATCACAGTCCC
 ACCTGAAGTCTCTGCCTTCCAGTCTCCCGCTCCCCAGTGGCCTCCGGCCCCGAGGCTATACCATC
 TCTGATTCCGCTCCATCACGAAGGGAAAGAGGGTAGAAAGGGATAACTCAAGAGCAGAGCTCGGCCT
 CCAGTGTGAGAAGGTGCCAGGCATCAACCTAGCTTTGTGTTCCCTACAGCTCTACCATTGCCCCTTTT
 TGGTGATGAGTCCAATAAGCCATCCTATTGCCAATGAGTCTTTGAACGGTCACTACAGCTGCTTGC
 CAGATTCCATCCTATGACACTACAAGATTGCTGTCTGTATGTGGGAGAAGGCCAGAGCAGCAGTGAAGC
 TGGCCATCCTGTCAAATGAGCATGGCTCTTACAGGTACACGGAGTTTCTGACAGGCTGGTTCGGCTTAT
 TGAGCTCAAGGACTGCCAACCAGACAAGGTGACTTAGGTGGACTGGATGTATGTGGCAGGATGGACAG
 TTCACCTACTGCTGGCATGATGACATCATGCAAGCTGTTTTCCACATTGCCACCTGATGCCACCAAGG
 ATGTGGACAAGCACCGCTGTGACAAGAAAGCCACCTGGGCAATGACTTTGTTTCTATCATCTACAATGA
 TTCTGGTGAAGACTTCAAAGTGGCACCATTAAGGGCCAGTTCAACTTTGTCCATGTGATCATCACACCG
 CTGGACTACAAGTGAACCTATTGACCCTGCAGTGCAGGAAGACATGGAAGGCCTCGTGGACACCAAGT
 TGCCAAAGATTGTGCTGACCGCAACCTGTCTTTGTGGCCGACAGATGGCCCTGCATGCAAAATATGGC
 CTCACAGGTACACCACAGCCGATCCAACCCACTGACATCTATCCCTCCAAGTGGATCGCAAGACTCCGC
 CACATTAAGCGTCTCCGCCAGAGGATCCGTGAAGAGGTGCACTATTCCAACCAAGCTTGCTCTGATGC
 ACCCTCCAGCCCACACCAAGCCAGCTCAAGCCCTGAGGCTACACCCACTATGAAACAGGCCAGCG

GAAGCGCCTCATTTCCTCCGTGGATGACTTCACAGAGTTTGTG

ACGCGTACGCGGCCGCTCGAGCAGAACTCATCTCAGAAGAGGATCTGGCAGCAATGATATCCTGGATT
ACAAGGATGACGACGATAAGGTTTAA

Protein Sequence:

>MR231869 representing NM_001286718
Red=Cloning site Green=Tags(s)

MAKPTSKDSGLKEKFKILLGLGTSRPNPRCAEGKQTEFIITSEILRELSGECGLNNRIRMIGQICDVAKT
KKLEEHAVEALWKAUSDLLQPERPPEARHAVL TLLKAI VQGQDRLGVLRALFFKVIKDYP SNEDLHERL
EVFKAL TDNGRHITYLEEEAEFVLQWMDVGLSSEFLLVNLVKFN SCYLDEYIASMVHMICLLCIRTV
SSVDIEVSLQVLDAVVCYNCLPAESLPLFIITLCRTINVKELCEPCWKL MRNLLGTHLGHS AIYNMCRIM
EDRSYMEDAPLLRGAVFFVGMALWGAHRLYSLKNSPTSVLPSFYEAMTCPNEVVSYEIVLSITRLIKKYR
KELQAVTWDILLDIERLLQQLQNLDSPELKTIVHDLLTTVEELCDQNEFHGSQERYVELVESYADQRPE
SSLLNLSYRAQSIHPAKDGWIQNLQLMERFFRNECRSAVRKVL DVLVLSFVLLINRQFYEEELINSVVI
SQLSHIPEDKDHQVRKLATQLLVDLAEGCHTHHFNSLLDII EKVMARSLSPPELEERDLAMHSASLEDV
KTAVLGLLVILQTKLYTLPASHATRVYESLISHIQLHYKHGYSLP IASSIRLQAFDFLLLRADSLHRLG
LPNKDGVVRFSPYCLCDCMELDRASEKKASGPLSPPTGPPSPVPMGPAVRLGYLPYSLLFRVLLQCLKQE
SDWKVLKLVLSRLPESLRYKVLIFTSPCSVDQLSSALCSML SAPKTLERLRGTPEGFSRTDLHLAVVPVL
TALISYHNYL DKTRQREMVYCLEQGLIYRCASQC VVALAICSVEMPDII IKALPVLVVKLTHISATASMA
IPLLEFLSTLARLPHLYRNFAAEQYASVFAISLPYTNPSKFNQYIVCLAHHVIA MWFI RCRLPFRKDFVP
YITKGLRSNVLLSFD DTP EKDSFRARSTSLNERPKRIQTSLTSASLGSADENSMAQADDNLKNLHLEL TE
TCLDMMARYVFSNFTAVPKRSPVGEFLLAGGRKTLWLVGNKLVTVTT SVGTGTRSLLGLDSGDLQGGSDS
SSDPSTHVRQTKEAPAKLESQAGQQVSRGARDVRSM SGGHGLRVGLDTSAPYSPGGSASLGPQTAVAA
KPEKPPAGAQLPTAEKTNLAAYVPLL TQGWAEILVRRPTGNTSWLMSENLSPFSSDINMPLQEL SNA
LMAAERFKEHRDTALYKSLVPAAGTAKPPTLPRSNTDSAMVLEEGSPGETQVPVEPPELDFEALGTD
RHCQRPDYTSRSSASSQEEKSHLEELAAGGIPIERAISSEGARPAVDLSFQPSQPLSKSSSSPELQTLQ
DILGDLGDKIDIGRLSPEAKVRSQSGILDGEAATWSATGEESRITV PPEGPLPSSSPRSPSGLRPRGYTI
SDSAPSRRGKRVERDNFKSRAAASSAEKVPGINPSFVFLQLYHSPFFGDES NKPILLPNESFERSVQLLD
QIPSYDTHKIAVLYVGEQSSSELA ILSNEHGSYRYTEFLTGLGRLIELKDCQPKVYLGGLDVCGEDGQ
FTYCWHDDIMQAVFHIA TLMP TKDVKHRCDK RHLGNDFVSI IYNDSGEDFKLGTIKGQFNFVHVII TP
LDYKCNLLTLQCRKMEGLVDTSVAKIVSDRNL SFVARQMALHANMASQVHHSR SNPTDIYPSKWIARLR
HIKRLRQRIREEVHYSNPSLPLMHPPAHTKAPAQAPEATPTYETGQRKRLISSVDDFTEFV

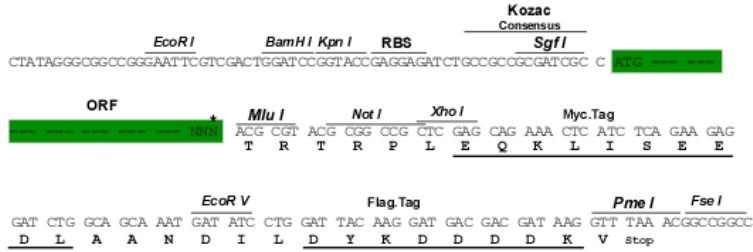
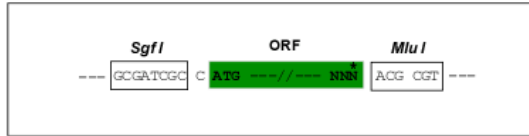
TRTRPLEQKLI SEEDLAANDILDYKDDDDKV

Restriction Sites:

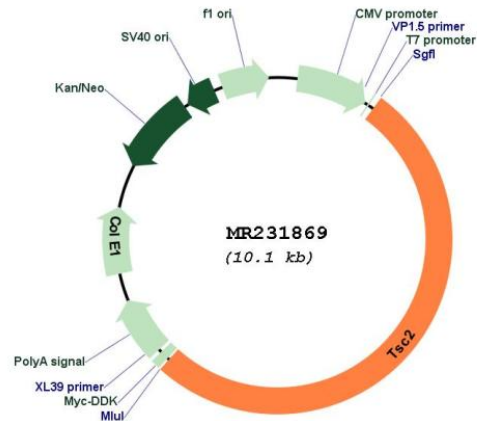
Sgfl-MluI

Cloning Scheme:

Cloning sites used for ORF Shutting:



* The last codon before the Stop codon of the ORF

Plasmid Map:


ACCN: NM_001286718

ORF Size: 5223 bp

OTI Disclaimer: The molecular sequence of this clone aligns with the gene accession number as a point of reference only. However, individual transcript sequences of the same gene can differ through naturally occurring variations (e.g. polymorphisms), each with its own valid existence. This clone is substantially in agreement with the reference, but a complete review of all prevailing variants is recommended prior to use. [More info](#)

OTI Annotation: This clone was engineered to express the complete ORF with an expression tag. Expression varies depending on the nature of the gene.

Components: The ORF clone is ion-exchange column purified and shipped in a 2D barcoded Matrix tube containing 10ug of transfection-ready, dried plasmid DNA (reconstitute with 100 ul of water).

Reconstitution Method:

1. Centrifuge at 5,000xg for 5min.
2. Carefully open the tube and add 100ul of sterile water to dissolve the DNA.
3. Close the tube and incubate for 10 minutes at room temperature.
4. Briefly vortex the tube and then do a quick spin (less than 5000xg) to concentrate the liquid at the bottom.
5. Store the suspended plasmid at -20°C. The DNA is stable for at least one year from date of shipping when stored at -20°C.

RefSeq: [NM_001286718.1](#), [NP_001273647.1](#)

RefSeq Size: 6134 bp

RefSeq ORF: 5226 bp

Locus ID: 22084

Cytogenetics: 17 12.41 cM

MW: 194.5 kDa