

Product datasheet for MR231858

Mroh2a (NM_001281466) Mouse Tagged ORF Clone

Product data:

Product Type:	Expression Plasmids
Product Name:	Mroh2a (NM_001281466) Mouse Tagged ORF Clone
Tag:	Myc-DDK
Symbol:	Mroh2a
Synonyms:	ENSMUSG00000044873; Heatr7b1; OTTMUSG00000020804
Mammalian Cell Selection:	Neomycin
Vector:	pCMV6-Entry (PS100001)
E. coli Selection:	Kanamycin (25 ug/mL)
ORF Nucleotide Sequence:	>MR231858 representing NM_001281466 Red=Cloning site Blue=ORF Green=Tags(s)

TTTTGTAATACGACTCACTATAGGGCGGCCGGAATTCGTCGACTGGATCCGGTACCGAGGAGATCTGCCGCCCGCATCGCC

ATGAAAGAAGCCACTGAGTTGAATGAAGACATGTTGGAGGAAGCAGAGCATCTGGCACTTCTAGAGCCAGAGGATGATGGTACATTCTCCAAGTCACCAACCTCCTGAACATCATGGACAGTGAATCAGCAAAGACAGACACCACAGGGCCAGGCCCTGGACATGCGGAAGACCTTGGCTTCAGTGATAATCACAGAGAAGGCTACCAGGATCCCTGTGTAGTGATGAACCGCTCATCCGCTGCCTGCAGATGCCAGAGATTTCTACCAACGCAAAA TGAACATCTACAACATCATGCAGGAGATCATCCAGCAGGAAGGGGAGATGGAGGAGCACTGTATACAAAG GCTGGTGGCCATTGCCTCCAAGCAGATGCGGGATATCACAGAGGCGGAGGATTTGAGACCGCCGAGGTG GCCAGTGAGACTCTAGTGCTCTGTCCCGAAACCACTTCAGCTTGGTCATGTATGAACTGCAGCATCATC TCAAGCCTCTCAACCTCACTGACGAGTTTGTCAATTGTCACCCTGGCCAAGCTGGCCAATGGCAATGTGTT TGAATTCATGCCCTACATGGGCATCACCTGGCTACCATATTCACGATGTTGAGACTTGGCAACGAAGCC AAGATGCGCCAGGTGATCTGTAGTGCCATGGAGACGTTCTGTGAGACGGTGCAGTTTTACCTGAGGCACC TGGAGGACAGCCTGTATCCCGTGATGACGGAGGACCAGTTTGTGTGAAGCTCTCCCAATGTACCGATA CTTGCTGAGCCTTCTCCTGCCTAATGACGACCTGAGGGAACAGGTGTATGACTATATCCCCCTGCTGCTGG CTGAGTTCCAGGGTGGCCTGGAGGCTCTCTTCGTCACACAGGTCTTGAGGCAGATTCTAGAAGCATCGGT TACCACCAACACCCCTATCCCCCGATGCTGCTACACCCCATTTTACAGAGTTGCACGTCACAGGTGTGC TCCAAGGCCCCAGCCAGCAGCAGTTCAGCAGTCAGAACCTGATGGAGATCGTGCCTGCTTCATAGCCC TGGCCCGCTCCTACCCCAAGGAAGTGAAGTTCTTCTCAGCCAGGTGGAGATGAGCAAAGAGGCTGT CCGTGTGGGGACTGGCCCTGATCAGGGCAGTAGTGAGCGCAGATGACCCCAAATTAATATCAAGACC ATCTACCTGGCCATCCGCGTCGTCAGGACTCTCTGACACTCGGTCCAAGGTACGGATGGCAATTC TCGAATCATTGGCCAGCTGTTCTGTCAGGCTCCAGGAAAAGATCAAAGGCTGGGTCTGAAATATGT GTCTGTCCAGCTACCTATCTACTACAAGCTGACAAATCGACGGGAATGCTTTTATCAGAGGATTTG



View online »

GAAGAGAAGATGGTTCACAAAGTAACCATGGATACTGTAAGATCATAACTTCTTCTATCAGCGGCATGA
 CCAATGAGTTCTGGGTGAGGCTCCTGTGCTACATCATGGAGACAGACTACACCGAGGCACTGACCCCAT
 CTGCATCAGCCTCACGAACCTGGCCGAGAACCAATTCATGGCAAAGACACGGAGGCTGGAATAGCTGGA
 AAGAGCAAGCATGTGGACTTGCCTGCACCCAGAAGCTGCTGGCCGCTCCTGGTGCTGATGTCATCAC
 CCTATAAAGGAGAAGGCCGGGGATTGCCATGCTCAACCTCCTGCGGACCCTAAGCCAGAGCATTGCTCC
 TTCCATGGCTGACATGTGGGAGCAGGAGATCCCTCTGCTAGTCCAGTACCTGGAAGAGCACACTGAGTTT
 ACCTGGAACCAAGACCTGGAAGATATGCTGATTCAGTTTCTGAGAACTCCCTCAAGAAGACCCGTG
 GGACCAGCTGGAGCCTACGGCTCAGCAAAGAGCTGAACAACCAGATCGAGACCTTCGACAGCCCTCCTT
 GGAAAAGGGTTTTCTGTACAGGGCCCTGGGTTTACCTTAGGCATGGGTCTGGAGCCGACAGGGTGAA
 GTGCTATTATTGGAGCTGCTGTACAAGACAGACTACAGCAATGATTTTGACCGGGAGGGCTCATCTGT
 GCTTTGGACTGTGTGCCCGGGCCAGGTAAGACAGTGTGAATGTGCTTCAGGACTTTGAGGAGAGGAT
 CCAGGAGTCGGAACAGTCTGCCAGATCGGTGCCTGGAGGAAAGACCACCCTGGAGGCGAGAGACGGTG
 AAGAGTGCCCTAATGGTGTGTACAGTGTGTCTCTACTGCCACCCAGATGCTCCTCACCACG
 TGGACAGCCCATCACCTAAGATCATCCACCCTACTCCAGCAGCTGCCAGGACATCAGCCTCAAAAT
 GGCCTTATGAAGAGTGTGTGCAGGTACCAACGCCATCAAAGCATCCAAGACCCAGAGGACTCCAG
 TTTGCCACAAATCTGCTTACTGGCCTCATAGTTGTGATCATCAAAGCAGAACCACCTGACCCTTGG
 TTTCTCCCGTGAGGTCGATGGCAATGGATGCTCTCTCACAATAAGCACCATGAAGCCTTTCTACTCTCC
 AGAGGAAAGCACAGAGTTGATGGATATCAGCATACACACCCTTATCTCCCTCAAACCCAGGGGAAAGAC
 AATGAGTCTGTTAAGACCCTGTATGCAAATACCATGAGTTCCTAAAGCAGCTGATGGAGGGCTCCTGC
 AGAGACAGCTGGACCCCAAGGGGCTGCAGGACACTGTGCATCTCCTGGAGAAGTGGATCTTGTGAGAA
 AGAGTGGGAACGGGAGAAAGCCATGGCCCTCCATCTCCATCTCATGCAGATCTACGTTCAAAGTATTGGT
 GTCTGTATCCCGCTGAAGCTGGGCAGTTGGAGTACTGGTTGGACTCATCGCTCCATGTACCTGTGATG
 CCCACAGAAGAACCCTGGCTCGATTAACGTCTGTCCAGTCTGTAGATCTTATGAAGCAGAC
 GTGCTCTTTATGGGAACTTCCAAGGAGCAGGAGCTGCAGAAATGTAAGGAGGACCTCCAGGACCCGAC
 ATGAACAAGATTTCCAGTCTTCTCCAGAGTCGCAAGGTGGTTTGCCAGAGTTAACTGCGACGAGG
 TTGTCTCTCATCCAGAAGCTCTGTGAGAACATTGGGGCCATGGACCTGCAGCATGACAGGGCTGCTGT
 CACCTGGATAGGCATCTTCTCCAGATGCGGGTCAAGGAGCTGGAGGACAAGGTGGCTGAGATACTGGT
 GCCATCTTGGTTACCTGCCAGTGGTGGATCACCCAGAGGTGAGGCGACATCTATTGAAGGCATCTCC
 TGCTGGCACACTACCACCAGGAGACCGTCTCACATCACTTCTGAGACAGCCACTGCCATGGAAAGCCA
 TCTGACAGAGGTGTGGCTGGCCGTGGCTGAGAATGTCCCCTTCGCACGGACCATGCTCCATGGCTTGTG
 GGCCGGCTGCAGTCGAGGTTCACTGCCAAGATAAATGCCACCTCAAGGTGACATCTGGCCCTGGCCG
 CTGTGGACCTCTGATGACGCTGTGTACCATCCAGCTCCTCATGGAAAAGATGGACCAGGATGACAAAT
 TCCAGACCTGTTTCTGACCTGTGTATACCTTCTGCTGCAGCTTGGCAGCAGCATGGGCCAGAAGCT
 GCCTCCCCTGTCTGAAAACCTGGAGACTGGTTACACAGGGCCACTGCCCCAGGAGATGACCCTGCAGA
 GGATCACTATCAAATCCATGCAGCTTTTGGTCAAGAGGATCAACAGAGAGCCCTGGAGCAGGCCTTGG
 GGAGCAGTCTGTGGTCCCTGCTGGAGAACGGAGGCACCTTCTTGAGGGAGTGAGCCTGATGGCCAGG
 CTGTGCATGCAGAACATGGAGAATACATGCAGAGGCTGGCAGAGCTGGTGTACGGGCATGGGCTCCG
 AGATCCTGAGCTGCTGCATCAGCAGCACGGCCATCTGTGTAGAATTCATGAGCGACCCAGTTCTGCACCA
 GGAGAAGCTGCTGAGGCCGTGGTGTGCTGATGCTGGAGAAGGTGCAGGGCAGGACAAAGATGAGACCTTG
 CAGGTGCTCTCTGCGTGCCTTGGGCAACATGGCTCTCGGTGCTCCCGGAAGGTGAAGCAGTATCGAA
 AACTCCTGCTGGAGAAGTGCCTGGGCTCCCTGCAGGGCAGGTGAGCAGCAGTGCATGGCGAAGGCAT
 GGAGGCCCTACCAAGGTCTGGCTGAGCTCCGAGAGGGCGATATAGGTCTTCTTTTGAAGCCATCTCT
 AAGCAGTGCAGAGCTTTCTTCGACAACGAAAGCGAGCTGCTACGGTTGAAGGCCTTTGTTCTTTGGGA
 AGCTTACAAAAGTGGTTGGGATTTCCAAGAAGCATTCTTCAAAGGGGAGGTGAAGAGAGGCTGGTCTC
 CCTCTGTGCACTGCCAGGACCCCTGCCCCAGCGTGGCCAGGCATGTGTGGCCACCATGTTTCAGTGT
 GTGCATTTCTGGGCTGGAAGTCCCTGGAGAGTTCCTTTGGTACAGTAAACGACAGCATCAATGAACAGA
 TGACAGTTTTTTCAGACAAACATGTGCTCCGTCCTGGCCAGAAAAGCCTGCTGTTCTGTGGCTTCTCT
 GTTGGAAACAACAGTCTTATGAAAACAATCTGTCAAGGATCAGAATTGCTGCCTGCAACTTGGCGGGA
 ATTATTGAAGCAGCTGTCTGCCATTATCTGAAAAGATGGACCTTGTGGACTTCGCAATTCTCTCC
 AGGACCTGCAGCTAGACTCAGACGCTGGGGTCAAGGAGGCGAGCCTTGGAGACCCTCAAAGTCTGGACAG
 CTGCAATCAGCACTGGCTTCTAGCGTCAACCAGAGGACTGCCG

ACGCGTACGCGGCCGCTCGAGCAGAACTCATCTCAGAAGAGGATCTGGCAGCAAATGATATCCTGGATT
ACAAGGATGACGACGATAAGGTTTAA

Protein Sequence:

>MR231858 representing NM_001281466
Red=Cloning site Green=Tags(s)

MKEATELNEDMLEEAEHLALLEPEDDGTFFQVTNLLNIMDESASAKTDTTGPGLDMRKTLASVIITEKATT
DPCVVMNALIRCLQMPEISTQRKMNIYNIMQEIIQQEGEMEEHCQRVLAISKQMRDITEAEFETAEV
ASETLVALSRNHFSLVMYELQHHLKPLNLTDFEIVITLAKLANGNVFEFMPYMGITLATIFTMLRLANEA
KMRQVICSAMETFCEVQFYLRHLEDLSL YPVMTEQDQFAVKLFPMYRYFVTWLRHQDLEVKLGVIKSLRP
MLSLLLPNDDLREQVYDIPLLLAEFQGGLEALFVTQVLRQILEASVTTNTPIPPMLLHPITELHVQVC
SKAPAQQFSSQNLMEIVHCFIALARSYPKELMKFFFFSQVEMSKEAVRVGTALIRAVVSADDPKINIKT
IYLAIRVVKNTLSDTRSKVRMAILRIIGQLVLSGFQEKIKGWGLKYVSVQLTLSTYKLTNRRECFYQRDL
EEKMVHKVTMDTVKIIITSSISGMTNEFWRLLCYIMETDYTEALTPICISLTNLAENQIHGKDEAGIAG
KSKHVDLPAPQKLLARLLVLMSSPYKGEGRGIAMNLLRRLTSLQSIAPSMADMWEQEIPLLVQYLEEHTF
TWNQKTWEDMLIQFLRNSLKTRGTSWSLRLSKELNNQIETDPSLEKGFLYRALGFTLGMGLEADREVE
VLLLELLYKTDYSNDFDREGVILCFGLCARGQVKTVLNVLQDFEERIQESEQSWQIGAWRKDHPWRRETV
KSALMVMYSCVSSYCHPQMLLTHVDSPTISKIIHHYSSSCQDISLKMAFMKSVVQVTNAIKSIQDPEDFQ
FAHKSALTGLIVVIIKAEPDHLVSPVRSMAMDALSQLSTMKPFYSPEESTELMDISIHTVISLQPPGED
NESVKTLYANTMSSLKQLMEGLLQRQLDPKGLQDTVHLLLEKWILSEKEWEREKAMALHHLMQIYVQSIG
VCIPKLKQGQVGLVGLIAPCTCAHRRRLASINVLSSLLDLHVSQTCSLWGTSKELQCKEDLQDQTD
MNKISSASSRVAKVVCPEFNCDEVVSLIQKLCENIGAMDLOHRAAVTWIGIFLQMRVKELEDKVAEILG
AIVLHLPVVDHPEVRRHLIEGILLLAHYHQETVLTSLLRQPLPMSHLETVWLAVAENVPFARTMLHGGL
GRLQSRFTAKINATSKADIWRLAAVDPLMCTIQLLMEKMDQDDKFPDLPDLLYTFLLQLGSSHGPEA
ASPVLKTWRLVHTGPLPQEMTLQRITIKSMQLLVKRINREPLEQALEEQSVWSLLENGGTFLEGVSLMAR
LCMQNMENYMRALAEVLTMGSEILSCCISSTAICVEFMSDPVLHQEKLRLPVVLMLEKAGQDKDETL
QVLSLRALGNMALGAPRVKQYRKLLEKCLGSLQGQVSSSAMAEGMEALTKVLAELREGDIGSSFEAIS
KQCRAFDNESELLRLKAFVLFGLTKVVGISKKHFFKGEVKGWVSLLLHCQDPCPSVAQACVATMFC
VHFWGWSLESSFHGSNDSINEQMTVFQTNMCSVLAQKKPAVLCGFLETTVFMKNNLSRIRIAACNLG
IIMKQLSAHYLKKMDLVGLRNSLQDLQLDSDAGVRRRAALETCLKVLDSCNQHWLLASPRGLP

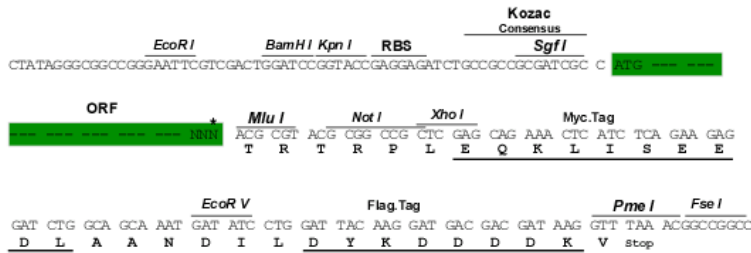
TRTRPLEQKLISEEDLAANDILDYKDDDDKV

Restriction Sites:

SgfI-MluI

Cloning Scheme:

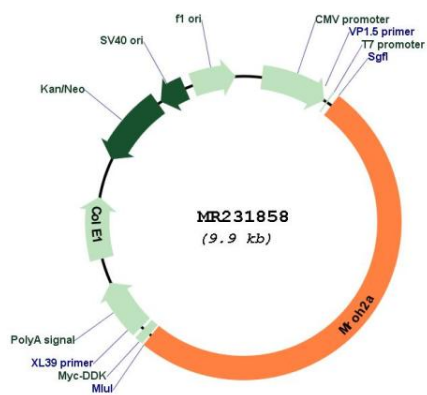
Cloning sites used for ORF Shuttling:



* The last codon before the Stop codon of the ORF

ACCN:	NM_001281466
ORF Size:	5013 bp
OTI Disclaimer:	The molecular sequence of this clone aligns with the gene accession number as a point of reference only. However, individual transcript sequences of the same gene can differ through naturally occurring variations (e.g. polymorphisms), each with its own valid existence. This clone is substantially in agreement with the reference, but a complete review of all prevailing variants is recommended prior to use. More info
OTI Annotation:	This clone was engineered to express the complete ORF with an expression tag. Expression varies depending on the nature of the gene.
Components:	The ORF clone is ion-exchange column purified and shipped in a 2D barcoded Matrix tube containing 10ug of transfection-ready, dried plasmid DNA (reconstitute with 100 ul of water).
Reconstitution Method:	<ol style="list-style-type: none">1. Centrifuge at 5,000xg for 5min.2. Carefully open the tube and add 100ul of sterile water to dissolve the DNA.3. Close the tube and incubate for 10 minutes at room temperature.4. Briefly vortex the tube and then do a quick spin (less than 5000xg) to concentrate the liquid at the bottom.5. Store the suspended plasmid at -20°C. The DNA is stable for at least one year from date of shipping when stored at -20°C.
RefSeq:	NM_001281466.1 , NP_001268395.1
RefSeq Size:	7502 bp
RefSeq ORF:	5016 bp
Locus ID:	100040766
Cytogenetics:	1
MW:	189.5 kDa

Product images:



Circular map for MR231858