

Product datasheet for MR231836

Slit2 (NM_001291227) Mouse Tagged ORF Clone

Product data:

| | |
|--------------------------|---|
| Product Type: | Expression Plasmids |
| Product Name: | Slit2 (NM_001291227) Mouse Tagged ORF Clone |
| Tag: | Myc-DDK |
| Symbol: | Slit2 |
| Synonyms: | b2b1200.1Clo; Drad; Drad-1; E030015M03Rik; E130320P19Rik; mKIAA4141; S; Slil3; slit-2 |
| Vector: | pCMV6-Entry (PS100001) |
| E. coli Selection: | Kanamycin (25 ug/mL) |
| Cell Selection: | Neomycin |
| ORF Nucleotide Sequence: | >MR231836 representing NM_001291227 Red=Cloning site Blue=ORF Green=Tags(s) |

TTTTGTAATACGACTCACTATAGGGCGCCGGAATTCGTCGACTGGATCCGGTACCGAGGAGATCTGCC
GCCGCGATCGCC

ATGAGTGGCATTGGCTGGCAGACACTGTCCCTATCGCTGGGGTTAGTGTTGTCGATCTTGAACAAGGTGG
CGCCGAGGCGTGCCCGCCAGTGCTCCTGTTGAGGCAGCACGGTGGACTGTCATGGGCTGGCACTGCC
CAGTGTGCCAGGAATATCCCCGCAACACCGAGAGACTGGATTTGAATGGAAATAACATCACGAGGATC
ACGAAGATAGATTTTGTGGTCTCAGGCACCTCAGAGTTCTTCAGCTCATGGAGAACAGAATCAGCACCA
TCGAGAGGGGAGCATTCCAGGATCTTAAGGAGCTGGAAAGACTGCGTTTAAACAGAAATAACCTTCAAGT
GTTTCTGAGCTGCTGTTTCTCGGGACTGCGAAGCTCTACCGGCTTGATCTCAGTGAAAAACAAATTCAA
GCAATTCGAAGGAAGGCTTTCGTGGGGCAGTTGACATTAACAACTGCAACTGGATTACAACAGATCA
GCTGCATTGAAGATGGGGCGTTCAGAGCTCTACGAGATCTGGAAGTGCTCACTCTGAACAATAACAATAT
TACTAGACTTTCAGTGGCAAGTTTCAACCATATGCCTAACTTAGGACATTTGACTCCACTCGAACAAC
TTGTACTGCGACTGCCACCTAGCCTGGCTCTCAGACTGGCTTCGCCAAAGGCCACGGTGGGCTTGATACA
CTCAGTGTATGGGCCATCCCACCTGAGGGGCCACAATGTAGCAGAGGTTCAAAAACGAGAGTTTGTCTG
CAGTGATGAGGAAGAAGTCCACAGTATTTCATGGCTCCCTCCTGCAAGTGTGCTGCACTGCCCGCTGCT
TGTACCTGTAGCAACAACATTGTAGACTGCCGAGGAAAGGTCTCACTGAGATCCCCACAATCTGCCTG
AGACCATCACAGAAATACGTTTGAACAGAACTCCATCAGGGTCACTCCCTCCAGGAGCCTTCTCACCATA
CAAAAAGCTTAGACGACTAGACCTGAGCAACAACAGATCTCTGAACTTGCAACAGATGCCTTCAAGGA
CTGCGCTCTGAAATCACTTGTCTGTATGGAATAAAATCACAGAACTCCAAAAAGTTTATTGGAAG
GACTATTTTCTGCACTACTATTATGAAATGCAACAAGATAAACTGCCTTCGGGTAGATGCTTTTCA
GGACCTGCACAACCTTGAACCTTCTCCTTATATGACAATAAGCTTCAGACGGTTGCCAAGGACACCTTC
TCAGCCCTCAGAGCCATCAAACATATGCATTTGGCCAGAAATCCTTTCACTTGTGACTGCCATCTCAAGT
GGCTAGCGGATTATCTCCACACCAACCCAATTGAGACCAGCGGTGCCCGTTGCACCAGCCCCGCGCCT
GGCAAAACAAAAGAATTGGACAGATCAAAAGCAAGAAATCCGTTGTTTCAGCTAAAGAACAGTATTTTATT
CCAGGTACAGAAGATTATCGATCAAAATTAAGTGGAGACTGCTTTCAGACTTGGCTTGTCTGAGAAGT



[View online »](#)

GTCGCTGTGAAGGGACCACAGTAGACTGCTCCAATCAAAGACTCAACAAAATCCCTGACCATATCCCCA
GTACACAGCAGAGCTGCGTCTCAATAATAATGAATTCACAGTGTTAGAAGCCACGGGAATATTTAAGAAA
CTTCTCAGTTACGTAATAAACAACCTTTAGCAACAATAAGATCACGGATATCGAGGAGGGTGCATTGGAAG
GCGCGTCTGGTGTGAATGAAATCTTCTCACCAGTAACCGTTTGGAAAATGTTACAGCATAAGATGTTCAA
AGGACTGGAGAGCCTCAAACATTGATGCTGAGAAGTAATCGAATAAGCTGTGTTGGGAACGACAGTTTC
ATAGGACTCGGCTCTGTGCGTCTGCTCTTTATATGACAATCAAATTACCACAGTGGCACCAGGAGCAT
TTGATTTCTCCATTATTATCCACTTAAACCTTTGGCCAATCCTTTCAACTGTAACGTGCACCTGGC
ATGGCTGGGAGAATGGCTCAGAAGGAAAAGAATTGTAACAGGAAAATCCTCGATGCCAAAAACCTACTTC
CTGAAGGAAAATCCCAATCCAGGATGTAGCCATTAGGACTTACCTGTGATGATGAAAATGATGACAATA
GTTGCTCTCCACTCTCCCGTTGCTTCTGAATGTACCTGCTTGGATACAGTGGTACGATGTAGCAACAA
GGGCTTGAAGGTTTTGCCTAAAGGTATTCCAAAAGATGTCACAGAGCTGTATCTGGATGGGAACAGTTT
ACGCTGGTCCCGAAGGAACCTCTAACTACAAACATTTAACACTTATAGACTTAAGTAACAACCGAATAA
GCACCTTTCCAATCAAAGCTTCAGCAACATGACCCAGCTTCTCACCTTAATCCTCAGTTACAACCGTCT
GAGATGTATCCCTCCACGAACCTTTGATGGATTGAAGTCTCTTCGGTTACTGTCTTTACATGAAAATGAC
ATTTCTGTGTGCTGAAGGTGCCTTCAATGACTTGTGACCTTGTGACACTTAGCGATTGGAGCCAACC
CTCTTTACTGTGATTGTAACATGCAAGTGTATCCGACTGGGTGAAGTCGGAATATAAGGAACCTGGAAT
TGCACGCTGTGCCGGCCCTGGAGAAAATGGCAGATAAATATTACTCACTACTCCCTCCAAAAAATTTACA
TGTCAAGTCCCCTGGATATCACTATTCAGCCAGTGTAAATCCCTGCTTATCAAATCCATGTA AAAATG
ATGGCACCTGTAACAATGACCCCGTTGATTTTTATCGATGTACCTGCCATATGGATTCAAGGGTCAGGA
CTGTGATGTCCCATTCATGCTTGTATCAGTAATCCATGTAACATGGAGGAACCTGTCACTTAAAGGAA
GGAGAGAATGCTGGATTCTGGTGCATTGTGCTGATGGGTTTGAAGGAGAAAACCTGTGAAGTCAATATTG
ATGATTGTGAAGATAATGATTGTAAAAATAATTCTACATGCGTTGATGGAATTAACAACACACATGTCT
TTGCCACCGGAATACACAGCTGCTAATCTGAATGAGGTGGAAAAGGTGAACCTGTGGAGAAAAGCTG
GACTTCTGTGCACAAGACTTGAATCCCTGCCAGCATGACTCCAAGTGCATCCTGACTCCAAGGGATTCA
AGTGTGACTGCACTCCAGGATACATTGGTGAAGTGTGACATTGACTTTGATGACTGCCAAGATAACAA
GTGTA AAAACGGTGTCACTGCAACAGATGCCGTGAACGGATACACGTGCGTCTGTCTGAAGGTACAGT
GGCTTGTCTGTGAGTTTTCTCCACCCATGGTCTCCCTCGCACCAGCCCTGTGATAATTTTGATTGCC
AGAATGGAGCCCAGTGTATCATCAGGATAAATGAACCAATATGCCAGTGTTCCTGGCTACCTGGGAGA
GAAGTGTGAGAAATTGGTCAAGTGAATTTGTAACAAAGAGTCTATCTTCAGATTCTTCAGCCAAG
GTTCCGGCCTCAGACAAACATCACACTTCAGATTGCCACAGATGAAGACAGCGGCATCCTCTGTATAAAG
GTGACAAAAGACCATTGCCGTGGAACCTATAGAGGGCGAGTTCGAGCCAGCTATGACACCGGCTCTCA
TCCGGCTTCTGCCATTTACAGTGTGGAGACAATCAATGATGGAAACTTCCACATTGTGGAGCTACTGACC
CTGGATTCCAGTCTTTCCCTCTCTGTGGATGGAGGAAGCCCTAAAAGTCATCACCAATTTGTCAAAA
CAATCTACTCTGAATTTGACTCTCCACTCTATGTAGGAGGCATGCCTGGGAAAAATAACGTGGCATCCCTGCG
CCAGGCCCTGGGCAAAAATGGCACCAGCTTCCATGGCTGTATCCGGAACCTTTACATTAACAGTGAAGT
CAGGACTTCCGGAAAAATGCCTATGCAAACCGGAATTCGCTGGCTGTGAACCATGCCACAAGAAAGTAT
GTGCCCATGGCATGTGCCAGCCAGCAGCAATCAGGCTTACCTGTGAATGTGAGGAAGGGTGGATGGG
GCCCTCTGTGACCAGAGAACCAATGATCCCTGCCTCGGAAACAAATGTGTGCATGGGACCTGCCTGCC
ATCAATGCCTTCTCTATAGTTGCAAGTGCCTGGAGGGCCATGGCGGTGTCTCTGTGATGAAGAAGAAG
ATCTCTTTAACCCTGCCAGATGATCAAGTGAAGCATGGGAAGTGCAGGCTTTCTGGAGTGGGCCAGCC
CTATTGTGAATGCAACAGTGGATTACCGGGGACAGCTGTGATAGAGAAATTTCTGTGAGGGGACCGG
ATAAGGGACTATTACCAGAAGCAGCAGGGTTACGCTGCCTGTCAAACAATAAGAAAGTATCTCGTTGG
AATGCAGAGGGGGTGCCTGGAGGCCAGTGTGTGGACCTCTGAGAAGCAAGAGCGGAAATACTCTTT
CGAATGCACAGATGGCTCCTCATTGTGGACGAGGTTGAGAAAGTGGTGAAGTGCAGGCTGCGCGAGATGT
GCCTCC

ACGCGTACGCGGCCGCTCGAGCAGAAACTCATCTCAGAAGAGGATCTGGCAGCAATGATATCCTGGATT
ACAAGGATGACGACGATAAGGTTTAA

Protein Sequence:

>MR231836 representing NM_001291227
 Red=Cloning site Green=Tags(s)

MSGIGWQTL SLSLGLVLSILNKVAPQACPAQCSCSGSTVDCHGLALRSVPRNIPRNTERLDLNGNITRI
 TKIDFAGLRHLRVLQLMENRISTIERGAFQDLKELERLRNRNLQLFPELLFLGTAKLYRLDLSENQIQ
 AIPRKAFRGAVDIKNLQLDYNQISCIEDGAFRALRDLEVLTLNNNITRLSVASFNMHPKLRTRFLHSNN
 LYCDCHLAWLSDWLRQRPRVGLYTQCMGPSHLRGHNVAEVQKREFVCSDEEEGHQSFMAPSCSVLHCPAA
 CTCSNNI VDCRGGKGLTEIPTNL PETITEIRLEQNSIRVIPP GAFSPYKLRRLDL SNNQISELAPDAFQG
 LRSLNSLVLYGNKITELPKSLFEGLFSLQLLLL NANKINCLRVDAFQDLHNLNLLSLYDNKLQTVAKGTF
 SALRAIQTMHLAQNPFICDCHLKWLDADLHTNPIETSGARCTSPRRLANKRIGQIKSKKFRCSAKEQYFI
 PGTEDYRSLSGDCFADLACPEKCRCEGTTVDCSNQRLNKIPDHIPQYTAELRLNNEFTVLEATGIFKK
 LPQLRKINFSNNKITDIEEGAFEGASGVNEILLTSNRLENVQHMKFGLKESLKTLMRLSNRISCVGNSF
 IGLGSVRLLSLYDNQITTVAPGAFDSLHSLSTLNLLANPFNCNCHLAWLGEWLRKRIVTGNPRCQKPYF
 LKEIPIQDVAIQDFTCDDGNDNCSPLSRCPSECTCLDTVVRC SNKGLKVL PKGIPKDVTELYLDGNQF
 TLVPKELSNYKHLTLIDL SNNRISTLSNQSF SNMTQLLTLILSYNRLRCIPPRTFDGLKSLRLLSLHGND
 ISVVPEGAFNDLSALSHLAIGANPLYCDNMQWLSDWVKSEYKEPGIARCAAGPGEMADKLLLTTPSKKFT
 CQGPVDITIQAKCNPCLSNPCKNDGTCNNDPVDFYRCTCPYGFKGQDCDVP IHACISNPCKHGGTCHLKE
 GENAGFWCTCADGFEGENCEVNIDDCEDNDCENNSTCVDGINNYTCLCPPEYTAANLNEVEKGEELCEEK
 DFCAQDLNPCQHDSKCILTPKGFKCDCTPGYIGEHCDIDFDDCQDNKCKNGAHTDAVNGYTCVCPPEGYS
 GLFCEFSPPMVLPRTPCDNFDCQNGAQCIIRINEPICQLPGYLGEKCEKLVSVNFVNKESYLQIPSAK
 VRPQNTITLQIATDEDSGILLYKGDKDHIAVELYRGRVRSYDTGSHPASAIYSVETINDGNFHI VELLT
 LDSSL SLSVDGGSPKVI TNLSKQSTLNFD SPLYVGGMPGKNNVASLRQAPGQNGTSFHGCI RNLYINSEL
 QDFRKMPMQTGILPGCEPCHKKVCAHGMCQPSSQSGFTCECEEGWMGPLCDQRTNDPCLGNKCVHGTCLP
 INAFSYCKCLEGHGGVLCDEEEDL FNPQMICKKHGKCR LSGVGQPYCECNSGF TGDSCDREISCRGER
 IRDYYQKQQGYAACQTTKKVSRL ECRGGCAGGQC CGPLRSKRKYSFECTDGS SFVDEVEKVVKCGCARC
 AS

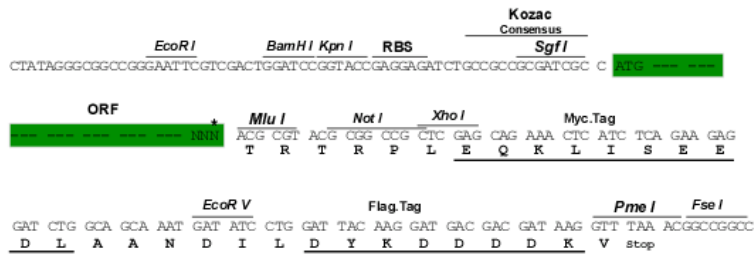
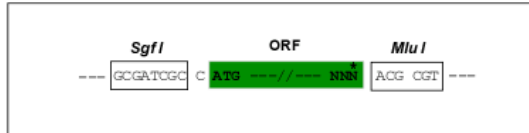
TRTRPLEQKLISEEDLAANDILDYKDDDDKV

Restriction Sites:

SgfI-MluI

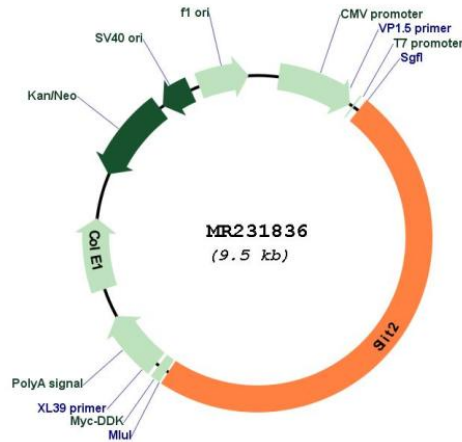
Cloning Scheme:

Cloning sites used for ORF Shuttling:



* The last codon before the Stop codon of the ORF

Plasmid Map:



ACCN: NM_001291227

ORF Size: 4626 bp

OTI Disclaimer: The molecular sequence of this clone aligns with the gene accession number as a point of reference only. However, individual transcript sequences of the same gene can differ through naturally occurring variations (e.g. polymorphisms), each with its own valid existence. This clone is substantially in agreement with the reference, but a complete review of all prevailing variants is recommended prior to use. [More info](#)

OTI Annotation: This clone was engineered to express the complete ORF with an expression tag. Expression varies depending on the nature of the gene.

Components: The ORF clone is ion-exchange column purified and shipped in a 2D barcoded Matrix tube containing 10ug of transfection-ready, dried plasmid DNA (reconstitute with 100 ul of water).

Reconstitution Method:

1. Centrifuge at 5,000xg for 5min.
2. Carefully open the tube and add 100ul of sterile water to dissolve the DNA.
3. Close the tube and incubate for 10 minutes at room temperature.
4. Briefly vortex the tube and then do a quick spin (less than 5000xg) to concentrate the liquid at the bottom.
5. Store the suspended plasmid at -20°C. The DNA is stable for at least one year from date of shipping when stored at -20°C.

RefSeq: [NM_001291227.2](#), [NP_001278156.1](#)

RefSeq Size: 8555 bp

RefSeq ORF: 4629 bp

Locus ID: 20563

Cytogenetics: 5 B3

MW: 171.7 kDa

Gene Summary: The protein encoded by this gene is a member of the Slit family of secreted glycoproteins, which function as ligands for the Robo family of immunoglobulin receptors. Slit proteins play highly conserved roles in axon guidance and neuronal migration and may also have functions during other cell migration processes including leukocyte migration. In mammals, members of the slit family are characterized by an N-terminal signal peptide, four leucine-rich repeats, nine epidermal growth factor repeats, and a C-terminal cysteine knot. Mice deficient for this gene exhibit abnormal axonal projections in the embryonic forebrain and develop supernumerary uretic buds that maintain improper connections to the nephric duct. Alternative splicing results in multiple transcript variants. [provided by RefSeq, Sep 2015]