

Product datasheet for MR231825

Ralgapb (NM_001291137) Mouse Tagged ORF Clone

Product data:

Product Type:	Expression Plasmids
Product Name:	Ralgapb (NM_001291137) Mouse Tagged ORF Clone
Tag:	Myc-DDK
Symbol:	Ralgapb
Synonyms:	A1507211; B230339M05Rik; p170
Vector:	pCMV6-Entry (PS100001)
E. coli Selection:	Kanamycin (25 ug/mL)
Cell Selection:	Neomycin
ORF Nucleotide Sequence:	>MR231825 representing NM_001291137 Red=Cloning site Blue=ORF Green=Tags(s)

TTTTGTAATACGACTCACTATAGGGCGGCCGGAATTCGTCGACTGGATCCGGTACCGAGGAGATCTGCC
GCC**CGGATCGCC**

ATGTACTCTGAGTGGCGGTCCTGCATTTGGTGATTCAGAGTGATCAAGGCCATACCAGTGTGCTACACA
GCTATCCAGAGAGTGTGGGCGAGAGGTGGCGAATGCAGTGGTCCGTCCTTTGGGCAGGCATTAGGTAC
TTCTTCAGTGGCTGGTAGTGAGAGTTTATTAATAAACTGACAAAGAAGTAAATGGACCATGGAAGTAATT
TGCTATGGACTGACCCTCCATTAGATGGAGAGACTGTAAAATATTGTGTTGATGTATATACAGATTGGA
TTATGGCTTTGGTGTGGCAAAAAGATTCTATTCCATTACCCATTATTAAGAACCCTAATCTATATGTTCA
AAGTATATTAACAATTTACAAAATCTTTTTGTACCAAGACAGGAACAGGGCTCCAGTCAAATCCGACTA
TGCTTACAAGTCTGAGAGCCATTCAGAAACTGGCCCGGAGTCATCCATCATGGCTCGAGAAAACCTGGG
AAGTCTTACTGTTGTTCTTCTGCAAATTAATGACATACTTCTGGCCCCACCACTGTTCAAGGTGGCAT
TGCTGAGAATCTAGCAGAGAAGCTGATTGGTGTCTCTTTGAAGTTTGGTTACTAGCTTGACCCCGGTGC
TTCCCAACACCTCCTTATTGGAAGACAGCAAGGAGATGGTGGCTAACTGGAGGCACCACCCTGCAGTGG
TGGAGCAGTGGAGCAAGTTATCTGTGCACTGACCTCCAGATTGCTCCGCTTTACATACGGTCTTTCATT
TCCTCCATTTAAAGTTCCTGATGAAGATGCCAATCTCATCCCTCCAGAAATGGACAATGAGTGATTGCA
CAAACATGGTTTTCGATTTTTACACATGCTAAGTAACCCCGTGGATCTGAGTAACCCAGCTGTTATAAGCT
CAACTCCGAAGTTTCAAGAACAGTTCCTGAATGTGAGCGGGATGCCACAGGAGCTGAGCCAGTACCCTG
CCTTAAACATCTGCCTCAGATATTCTTTCTGTCATGCGTGGAAATCAGCTGTCTGGTGGATGCATTTCTTA
GGCATTCTCGACCTCGATCAGACAGTGTCCCAACACCCGTGAATAGATTAAGTATGCCCCAGAGTG
CTGCTGTGAATACCACACCACACATAACCGGAGGCACCGGGCTGTTACTGTGAACAAGGCCACAATGAA
GACGAGTACAGTTACTACTGCTCACACCTCAAAGTCCAGCACCAGGCATCCTCCACCTCCTCTGTCC
AGTCCAAATCAGACTAGTTCAGAACCAGCCGCTGCCTGCCCCGAAGACCAAAGTTAACAGCATCT
TGAATCTCTTTGGATCGTGGTTATTCGATGCAGCATTTGTTCACTGTAACTCCATAATGGAATAACAG
AGACAACAGCATGACTGCATTTTTATCCAAATCTTCTTTCTTATAAATCTTCCATTGCAACCCAAAGCT
AGCATGGAGTTTCGACGGAAAGGGTCCCAATGTCAACAGACACCATGGTTTCAACCCCTGTGTTTGATG



[View online >](#)

CCAGTGAATTTCTGATAACTATGAAGCAGGAAGAGCTGAGGCTTGTTGGGACATTATGTAGGATTTTTG
TAGCAAGAAGACTGGAGAAGAGATTCTGCCAGCTTATTTATCCAGATTTTACATGCTTTTAAATCAAGG
TTGCAGATAAATGATTATGTATGCCATCCTGTCTTGCCAGCGTTATTCTAAACTCCCCTCCTTTGTTCT
GCTGTGACTTGAAAGGGATTGATGTTGTGGTTCCTTACTTTATTTTCAGCTCTTGAAACCATTTGCTCGA
CAGAGAACTCTCAAAATTCAAAAGCTATGTAATCCAACAGAATTGAGAAGGTCATCCATTAATATCCTG
CTTTCTTTGTTGCCCTCCCTCATTTTTGGCACAGTCAGATCTGAGGTGGTCTAGAAGGAAAGTTTA
GTAATGATGACAGCTCTTCTTATGATAAACCAATAACTTTTCTGTCCCTGAAGCTGAGACTGTGAATAT
ACTAATAGGTGCCTTGCAAACAGAAACGGACCCTAACAAACCCAAATGATACTAGGGGCAATGTTAAAT
ATTGTTCAAGATTCTGCACTTTTAGAAGCCATTGGTTGCCAAATGGAAATGGGTGGTGGAGAAAACAACC
TGAAGAGTCATAGTCGCACAAACAGTGGCATTAGCTCAGCAAGTGGAGGAAGCACAGAGCCTACAACCCC
TGATAGCGAGAGACCTGCTCAAGCTCTTCTGAGGGATTAGCTCTTAATACAGATTAGCTGCTGGGCTC
CTGATTCGCAGCATTATCTCGTCACTCAACGACTCAACTCCCAGTGGCGGCAAGATATGAGCATATCCT
TGGCAGCTCTAGAGCTCCTCTGGCCTGGCAAAGGTGAAGGTGATGGTTGACTCAGGAGACCGGAAGCG
TGCCATCAGTTCTGTGTGCAGCTACATCGTATACCAATGCAGTCGGCCAGCTCCTCTTCACTCCCGGAT
CTGCACTCCATGATAGTGGCAGCATTTCAGTGTCTCTGTGTCTGGCTGACAGAGCACCTGATATGCTGG
ATGAAAAGGATTGCCTTAAGGAAGTACTGGAGATTGTAGAACTGGGTATCTCAGGAAGCAATCCAAGAA
CAGTGAGCAAGAAGTCAAGTACAAGGTGATAAGGAGCCGAACCTGCATCCATGAGGGTAAAGGACGCC
GCCGAAGCCACTTAACATGTATCATGCAGTTGCTTGGCGCATTTCCTTCAACCCAGTGGTCTGCTTCTC
CTTGTAGTCTGGTGAATGAGACCACTCTGATCAAACTCCAGGCTGCCAACCAAAACAAGCATAGTTT
CCGGTACTTTGTTTTGGATAACAGTGTCTCCTGGCAATGCTGGAGCAACCGCTTGGAAATGAGCAGAA
GACTTTTTCCCTCTGTCACTGTCTGGTCCGGGAATGTCTGGAAGACTTGGTGGGCTCAGCAGCTTT
GCCTTTTACCCAGAGGAGCAAAAGCAAAACAGAAGCTTTTTGTGCCTGAACCTCGCCAGTTCCTAAAA
TGATGTTGGATTTAAATATTCTGTGAAACATCGCCATTTCCTGAAGAGGTGGACAAGATCCTTTTTGTA
AAAGCAGACTTGAGCATTCCAGATTTACATGAAATTTGCACTGAAGAATTAGAAGAGAGGCATGAAAAAT
TAAGAAGTGGTATGGCACAACAAATTGCTTATGAGATGCACCTGGAACAGCAGAGCGAGGGGAACTGCA
GAAGCGAAGCTTCCCTGACCCTGTTACGGACTGTAAGCCTCCACCTCCTGCCAGGAATTCAGACAGCC
CGCCTTTTCTTTCTCACTTTGGATTTTTATCCTTAGAGGCATTAAGGAACCTGCAAAATAGTCGTCTAC
CTCCTCATCTTATTGCACTCGATTCTACCATACCTGGATTTTTTGTATGACATTGGGTATCTGGATCTCT
GCCATGCCGGCCTTTTGACTGTTTTTATTTTCTACATGAAGCCAGTCCAGAAAACAACCAAGAGATT
TTAAAGAAATGTGGAGTCTCCAGAAATGTTCCAGCCACATTTCTAGAATTTTTGCTCTCCCTGGGCTGGT
CAGTAGATGTGGGAAACACCCCGTTGGACAGGACATGTGTCCACCAGTTGGTCAATCAATAGTTGTGA
TGATGGTGAAGGGTCTGAACCAGATGAAATAAATCCTCTGAAGACGTTGGGGCTAGCATTTTCAACGGG
CAGAAGAAGGTGCTGTATTATGCTGATGCCCTAACAGAAATAGCTTTTGTGGTTCCTTCTCTGTGGAGT
CACTGACTGATTCAATGGAAAGTAACTCTCAGACCAAGATAGTACTCAAAATGAGTCTTATGCCGGG
AATTCTGAAGCAGCCACCCCTGACACTTGAGTTGGTCCCAATCACACAGACAGTCTTAATTCCTCACAG
AGGCTCAGTCCCAGTCCAGAAATGAAGAAGTGCCTCAGGGTCCGCTGTGCCCCCGCTTGGACCTGAGA
CAAGAGTATCTGTAGTCTGGTGGAAACGCTACGATGATATAGAAAATTTCCACTCTCAGATCTGATGAC
AGAGATCAGCACTGGTGTAGAGACTACTGCAAAATAGTAGCACTTCTCTGAGATCTACAACCTTTGAAAA
GAAGTCCAGTAATCTTCACTCACCTTTAAACACTGGATTGTTCCGGATAAAAAATCCAAGGAGCCACTG
GAAAAATTAACATGGTCAATACCTCTGGTTGATGGGATGATAGTCAGCCGTCGAGCACTTGGCTTTCTGGT
GAGGCAGACGGTAATAAACATTTGTAGAAGAAAGAGACTGGAGAGTGATTCTACAGTCCACCACATGTC
CGTCGGAACAGAAAATCACTGACATTGTCAACAAATATCGGAATAAGCAGTTGGAGCCAGAGTTTTATA
CTGCCCTTTTCCAGGAGTTGGACTCAAGAAGTGCAGTTCT

ACGCGTACGCGGCCGCTCGAGCAGAACTCATCTCAGAAGAGGATCTGGCAGCAATGATATCCTGGATT
ACAAGGATGACGACGATAAGGTTTAA

Protein Sequence: >MR231825 representing NM_001291137
 Red=Cloning site Green=Tags(s)

MYSEWRSLHLVIQSDQGHTSVLHSYPESVGREVANAVRPLGQALGTSSVAGSESLKKTDEKVKWTEVI
 CYGLTLPLDGETVKYCVVYTDWIMALVLPKDISIPLPIIKEPNLYVQSILKHLQNLVPRQEQGSSQIRL
 CLQVLRATQKLARESSIMARETWEVLLLFLLQINDILLAPPTVQGGIAENLAEKLGVLFEVWLLACTRC
 FPTPPYWK TAKEMVANWRHHPAVVEQWSKVICALTSRLLRFTYGPSFPFKVPDEDANLIPPEMDNECIA
 QTWFRFLHMLSNPVDLSNPAVISSTPKFQEQFLNVSGMPQELSQYPCCLKHLPQIFFRAMRGISCLVDAFL
 GISRPRSDSAPPTPVNRLSMPQSAAVNTTPPHNRRHRAVTVNKATMKTSTVTTAHTSKVQHQASSTSPLS
 SPNQTSSEPRPLPAPRRPKVNSILNLFSGWLFDAAFVHCKLHNGINRDNSTASFQIILLSYKSSIATQA
 SMEFRRKGSQMSTDMVSNPVFDFASEFPDNYEAGRAEACGTLCRIFCSKKTGEEILPAYLSRFYMLLIQG
 LQINDYVCHPVLASVILNSPPLFCCDLKGDVVPYFISALETILPDRELSKFYSVNPTELRRSSINIL
 LSLPLPHHFGTVRSEVLEGGKFSNDDSSSYDKPITFLSLKLRLVNILIGALQTE TDPNNTQMILGAMLN
 IVQDSALLEAIGCQMEMGGGENNLKSHSRTNSGISASGGSTEPTTPDSE RPAQALLRDYALNTDSAAGL
 LIRSIHLVTQRLNSQWRQDMSISLAELLELSGLAKVKVMVDSGDRKRAISSVCSYIVYQCSRPAPLHSRD
 LHMIVAAFQCLCVWLTEHPDMLDEKDCLEIVELGTSKSKNSEQEVKYGDKEPNPASMVRKDA
 AEATLTCIMQLLGAFPSGSPASPCSLVNETTLIKYSRLPTINKHSFRYFVLDNSVILAMLEQPLGNEQN
 DFFPSVTVLVRGMSGRLAWAQQCLLPRGAKANQKLFVPEPRPVKNDVGFKYSVKHRPFPEEVDPKIPFV
 KADLSIPDLHEIVTEELEERHEKLRSGMAQQIAYEMHLEQQSEGELQKRSFPDPVTDCKPPPAQEFQTA
 RLFLSHFGFLSLEALKEPANSRLPPLIALDSTIPGFFDDIGYLDLLPCRPFDTVFIYMKPGQKTNQEI
 LKNVSSRNVPHFLEFLLSLGWSVDVGKHPGWTGHVSTSWINSKDDGEGSEPEITSSSEVVGASIFNG
 QKKVLYADALTEIAFVVPVPEVSLTDSLESNISDQSDSNMDLMPGILKQPPLTLELVPNHTDSLNSQ
 RLSPPSSRMKKLPQGRPVPLGPETRVSVVWVERYDDIENFPLSDLMTEISTGVETTANSSTLSRSTTLEK
 EVPVIFIHPLNTGLFRIKIQGATGKFNMIPLVDGMIVSRRALGFLVRQTVINICRRKRLESDSYSPPHY
 RRRKQITDIVNKYRNKQLEPEFYTALFQEVGLKNCSS

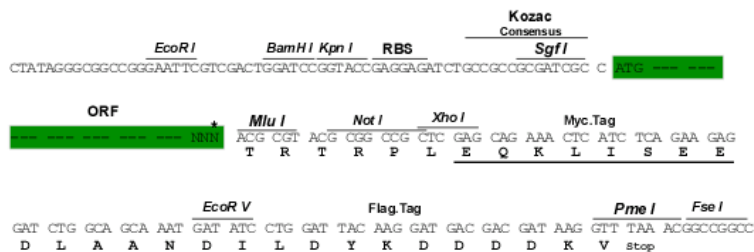
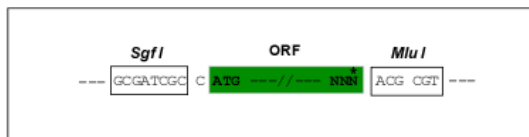
TRTRPLEQKLISEEDLAANDILDYKDDDDKV

Restriction Sites:

SgfI-MluI

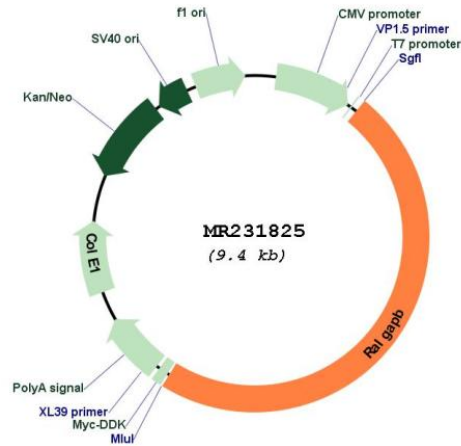
Cloning Scheme:

Cloning sites used for ORF Shuttling:



* The last codon before the Stop codon of the ORF

Plasmid Map:



ACCN: NM_001291137

ORF Size: 4521 bp

OTI Disclaimer: The molecular sequence of this clone aligns with the gene accession number as a point of reference only. However, individual transcript sequences of the same gene can differ through naturally occurring variations (e.g. polymorphisms), each with its own valid existence. This clone is substantially in agreement with the reference, but a complete review of all prevailing variants is recommended prior to use. [More info](#)

OTI Annotation: This clone was engineered to express the complete ORF with an expression tag. Expression varies depending on the nature of the gene.

Components: The ORF clone is ion-exchange column purified and shipped in a 2D barcoded Matrix tube containing 10ug of transfection-ready, dried plasmid DNA (reconstitute with 100 ul of water).

Reconstitution Method:

1. Centrifuge at 5,000xg for 5min.
2. Carefully open the tube and add 100ul of sterile water to dissolve the DNA.
3. Close the tube and incubate for 10 minutes at room temperature.
4. Briefly vortex the tube and then do a quick spin (less than 5000xg) to concentrate the liquid at the bottom.
5. Store the suspended plasmid at -20°C. The DNA is stable for at least one year from date of shipping when stored at -20°C.

RefSeq: [NM_001291137.1](#), [NP_001278066.1](#)

RefSeq Size: 8426 bp

RefSeq ORF: 4524 bp

Locus ID: 228850

Cytogenetics: 2 H1

MW: 168.4 kDa