

Product datasheet for MR231821

Dnmt1 (NM_001199433) Mouse Tagged ORF Clone

Product data:

Product Type:	Expression Plasmids
Product Name:	Dnmt1 (NM_001199433) Mouse Tagged ORF Clone
Tag:	Myc-DDK
Symbol:	Dnmt1
Synonyms:	Cxxc9; Dnmt; Dnmt1o; m.Mmul; MCMT; Met-1; Met1; MommeD; MommeD2; MTa; MTase
Vector:	pCMV6-Entry (PS100001)
E. coli Selection:	Kanamycin (25 ug/mL)
Cell Selection:	Neomycin
ORF Nucleotide Sequence:	>MR231821 representing NM_001199433 Red=Cloning site Blue=ORF Green=Tags(s)

TTTTGTAATACGACTCACTATAGGGCGCCGGAATTCGTCGACTGGATCCGGTACCGAGGAGATCTGCC
GCC**CGATCGCC**

ATGGCAGACTCAAATAGATCCCCAAGATCCAGGCCAAGCCTCGGGGACCCAGGAGAAGCAAGTCGGACA
GTGACACCCTTTAGTTGAACTTCACCTAGTTCCGTGGTACGAGGAGAACCACCAGGCAGACCACCAT
CACGGCTCACTTCACGAAGGGCCCACTAAACGGAAACCAAGGAAGAGTCGGAAGAGGGGAAGTTCGGCT
GAGTCGGCTGCAGAGGAGAGAGACCAGGATAAGAAACGCAGAGTTGTAGACACAGAGAGTGGTGTGCGAG
CTGCTGTGGAGAACTGGAAGAGGTAACAGCGGGAACCCAGCTGGGTCCGGAAGGCCATGTGAACAGGA
AGATGACAACAGGAGTCTTCGAGCTCACACCAGAGAGCTATCATTGAGGCGGAAATCAAAGGAGGATCCA
GACAGAGAAGCAAGACCGGAACTCACTTGGACGAGGACGAGGACGGAAGGATAAAAGAAGTTCCA
GACCCAGGAGCCAGCCAGAGATCCAGCTGCCAAACGGAGACCAAGGAAGCAGAGCCAGAGCAGGTAGC
TCCAGAGACTCCCAGGACAGAGACGAGGATGAGAGGGAGGAGAAGACGAAAAACGACACGTAAGGATCC
CTGGAGTCACACACCGTTCCCGTTCAGAGCAGATCGGAGAGAAAAGCCGCTCAAAGCAAAAGTGTGATCC
CGAAGATCAACTACCAAAGTGCCCGAGTGTGGCCAGCACCTAGACACCCTAACCTGAAGTACCAGCA
GCACCCTGAGGATGCTGTGGATGAACCCAGATGTTGACCAAGTGAAGAACTGTCCATCTACGACTCCACC
TCGACCTGGTTTGATACTTATGAAGATTCTCCATGCATAGGTTCACTTCTTTCAGTGTGTACTGACGTC
GCGGGCACCTGTGTCTGTCGACACCGGTCTCATTGAGAAGAATGTAGAGCTCTACTTTTCTGGGTGTGC
CAAAGCAATTCATGACGAGAATCCATCTATGGAAGGTGGTATTAATGGCAAAAACCTCGGGCCAATCAAT
CAGTGGTGGCTCAGTGGCTTTGATGGTGGCGAGAAGGTGCTCATTGGCTTCTCCACTGCATTTGCTGAAT
ACATTTTGTGAGGCCAGCAAAGAGTATGAGCCAATATTTGGGCTGATGCAGGAGAAAAATTCATCAG
CAAGATTGTTGTTGAGTTCCTGCAAAACAATCCTGATGCTGTATGAAGACCTGATCAATAAGATTGAG
ACCACTGTTCTCTTCTACCATTAATGTGAACCGGTTACAGAGGACTCCCTCTTACGCCACGCCAGT
TTGTAGTGAGCCAGGTAGAGAGTTACGACGAAGCCAAGGACGATGATGAGACCCCATCTTCTTGTCTCC
CTGTATGAGAGCCCTGATCCATTTGGCTGGTGTCTCCCTGGGACAGAGGGCAGCAACAAGGCCGCTCATG
GGTGCTACCAAGGAGAAGGACAAAGCACCCACGAAAGCCACCACCACCAAGCTGGTCTATCAGATCTTTG



[View online »](#)

ACACTTCTTCTCAGAGCAGATTGAGAAGTATGATAAGGAGGACAAGGAGAATGCCATGAAGCGCCGCC
CTGTGGTGTCTGTGAGGTCTGTCAGCAGCCTGAGTGTGGGAAGTCAAGGCGTGCAAAGATATGGTGAAG
TTTGGTGGCACTGGACGGAGTAAGCAGGCTTGCCTCAAGAGGAGGTGTCTAACTTGGCGGTGAAGGAGG
CAGACGACGATGAAGAGGCTGATGATGATGTGTGTCAGAGATGCCATCACCCAAAAGCTGCATCAGGGGAA
GAAGAAGAAGCAGAACAAGGACCGCATCTCTGGCTTGGGCGCCTATGAAGATTGAAGAGAATAGAAT
TACTATCAGAAGGTGAGCATCGATGAGGAGATGCTAGAGGTGGGCGACTGCGTCTCGGTTCATTCCAGATG
ATTCTCCAAACCACTCTATCTAGCCAGGTCACAGCTCTGTGGGAAGACAAAAATGGTCAGATGATGTT
CCATGCGCACTGGTTCTGCGCTGGGACAGACACAGTCTGGGAGCCACCTCCGACCCCTGGAACCTGTT
CTGGTGGGCGAGTGCGAAAACATGCAGCTTTCCTACATCCACAGCAAGGTCAAGTTCATCTACAAAGCCC
CTTCTGAAAACCTGGGCCATGGAGGGAGGCACAGACCCTGAGACCACACTGCCTGGGGCTGAGGATGGCAA
GACTTACTTCTCCAGCTCTGGTACAACCAGGAGTACGCAAGGTTTGAATCCCCACCCAAGACCCAGCCG
ACCGAGGACAACAAGCACAAGTTCTGCCTATCTTGTATCCGGCTGGCTGAGCTGAGACAAAAAGAAATGC
CCAAGGTCTGGAACAAATTGAGGAGGTGGATGGCCGGTCTACTGCAGTCCATCACCAAGAATGGTGT
TGTCTACCGACTGGGTGACAGTGTGTACCTTCTCCCGAGGCCTTACTTCAACATCAAAGTGGCTAGC
CCCGTGAACGCCAAAGAAGGATCCTGTGAACGAGACCCTGTACCCTGAGCACTACCGCAAGTATTCTG
ACTACATCAAGGGGAGCAACCTGGATGCTCCAGAGCCCTATCGCATCGGTGCGATAAAAGAGATCCACTG
TGGCAAGAAGAAAAGGCAAGGTCAACGAGGCAGACATCAAGCTGAGGCTCTACAAGTTCTACAGGCCTGAG
AATACCCACAGGTCTACAACGGATCCTATCACACTGACATCAACATGCTTACTGGAGCGACGAGGAAG
CTGTGGTGAACCTCAGCGACGTGACGGGCCGTGTACCGTGGAGTACGGGGAAGACCTACTTGAGAGCAT
CCAGGATTATTCACAAGGGGGCCCTGACCGCTTACTTCTCGAGGCCTACAATTCAAAGACCAAGAAC
TTTGAAGACCCACCAACCATGCCCGCAGCCCTGGGAACAAGGGAAAGGGAAAGGGAAAGGGAAAGGGGA
AGGGGAAGCATCAGGTGTGAGAGCCAAAGAGCCTGAGGCAGCCATCAAAGTCCCAAGCTCCGGACCCT
GGATGTGTTTTCCGGCTGTGGAGGTTATCGGAAGGATTCCACCAAGCAGGCATCTCGGAAACGCTGTGG
GCCATCGAGATGTGGACCCGGCAGCCAGGCATTTCCGGTGAACAACCCGGCACCACAGTGTTCACAG
AGGACTGCAACGTGCTTCTTAAGCTGGTATGGCTGGGAGGTGACCAACTCTCTGGGCCAAAGGCTGCC
ACAGAAGGGCGATGTGGAGATGCTGTGTGGTGGGCCACCCTGCCAGGGCTTCAAGTGGCATGAACCCTTC
AACTCCCGCACTTACTCCAAGTTCAAAAACCTCCCTAGTGGTCTCCTTCTCAGCTACTGTGACTACTACC
GGCCTCGGTTCTTCTTCTGGAGAACGTGAGGAACCTCGTGTCTACAGACGCTCCATGGTGTGAAAGCT
CACACTGCGCTGCCTGGTCCGCATGGGCTACCAGTGCACCTTTGGTGTGCTCCAGGCTGGACAGTATGGC
GTGGCCAGACACGAAGGAGGGCCATCATCTGGCTGCAGCCCCAGGAGAAAAGCTGCCTCTGTTCCAG
AGCCTCTGCATGTGTTTGCGCCCGTGCCTGCCAGCTGAGCGTTGTGGTGGATGACAAGAAGTTTGTAG
CAACATAACGAGGCTGAGCTCGGGGCCCTCCGAACCATCACCGTGCAGACACCATGTCTGACCTCCCC
GAGATCCAGAATGGAGCCTCGAATTCTGAGATCCCTACAATGGAGAGCCACTGTCTGGTTCCAGAGGC
AGCTGCGAGGATCACACTACCAGCCATCCTCAGGGACCATATCTGCAAGGACATGAGCCCACTGGTGGC
TGCCCGCATGCGGCACATCCCCTGTTCCAGGATCAGATTGGCGTGACCTGCCAACATACAGGTGCGG
CTGGGAGATGGCGTCATAGCCATAAGCTACAGTACACCTTTCATGATGTGAAAAATGGCTACAGCAGCA
CCGGTGCCTGCGTGGAGTCTGTTCTGTGCAGAAGGCAAGGCCTGCGACCCTGAGTCCAGGCAATTCAG
CACCTCATCCCCTGGTGCCTGCCGCACACTGGGAACCGGCACAACCACTGGGCTGGCCTCTACGGGCGT
CTGGAGTGGGATGGCTTCTTACGACCACTGTACCAACCCTGAGCCCATGGGCAAGCAGGCTCGGGTGC
TCCACCCGAGCAGCACCGGTCGTGAGTGTTCGGGAATGTGCCGCTCCAGGGCTTCCAGATAGCTA
CCGGTTCTTCGGCAACATCCTGGACAGACACCGCAGGTGGGTAATGCTGTGCCACCACCCTGGCCAAA
GCCATTGGCCTGGAGATTAAGCTCTGCCTGCTGTCCAGTGTCCGGAGAGCGCATCAGCTGCAGTTAAAG
CAAAGAGGAGGCTGCTACCAAGGAC

ACGCGTACGCGGGCCGCTCGAGCAGAAAACATCTCAGAAGAGGATCTGGCAGCAATGATATCCTGGATT
ACAAGGATGACGACGATAAGGTTTAA

Protein Sequence: >MR231821 representing NM_001199433
 Red=Cloning site Green=Tags(s)

MADSNRSPRSRPKPRGPRRSKSDSDLVETSPSSVATRRTRRQTTITAHFTKGPTKRKPKEESEEGNSA
 ESAAEERDQDKRRVVDTESGAAAVEKLEEVTAGTQLGPEEPCEQEDDNRSLRRHTREL SLRRKSKEDP
 DREARPE THLDEDEDGKKDKRSSRPRSQRDPAAKRRPKAEPEQVAPETPEDRDEDEREEKRRKTRKK
 LESHTVVPVQSRSERKAAQSKSVIPKINSPKCEPCGQHLDDPNLK YQQHPEDA VDEPQMLTSEKLSIYDST
 STWFDTYEDSPMHRFTSFSVYCSRGHLCPVDTGLIEKNVELYFSGCAKAIHDENPMEGGINGKNLGPIN
 QWWLSGFDGGEKVLIGFSTAFAYILMEPSKEYEPIFGLMQEKIYISKIVVEFLQNNPDVAYEDLINKIE
 TTVPPSTINVNRFTEDSLLRHAQFVVSQVESYDEAKDDDETPIFLSPCMRALIHLAGVSLGQRRATRRVM
 GATKEKDKAPTATTTKLVYQIFDFFSEQIEKYDKEDKENAMKRRRCVCEVCQQPECGKCKACKDMVK
 FGGTGRSKQAACLKRRCPNLAVKEADDDEEADDDVSEMPSPKLLHQGKKKQNKDRISWLQGPMKIEENRT
 YYQKVSIDEEMLEVDCVSVIPDDSSKPLYLARVTALWEDKNGQMMFHAHWFCAGTDTVLGATSDPLELF
 LVGECENMQLSYIHSKVKVIYKAPSENWAMEGGTDPETTLPGAEDGKTYFFQLWYNQYARFESPPKTQP
 TEDNKHKFC LSCIRLAELRQKEMPVLEQIEEVDGRVYCSSITKNGVVYRLGDSVYLPPEAFTFNIKVAS
 PVKRPKDPVNETLYPEHYRKYSYIKGSNLDAPEPYRIGRIKEIHC GKKGKVN EADIKLR LRYK FYRPE
 NTHRSYNGSYHTDINMLYWSDEEAVVNFSDVQGRCTVEYGEDLLESIQDYSSQGGPDRFYFLEAYNSKTKN
 FEDPPNHARSPGNKGGKGGKGGKGGKHQVSEPKEPEAAIKLPKLR TLDVFSGCGGLSEG FHQAGISETLW
 AIEMWDPAAQAFRLNPNP GTTVFTEDCNVLLKLV MAGEVNSLGGQLPQKGDVEMLCGGPPCQGFSGMNR
 NSRTYSKFKNSLVVSFLSYCDYRPRFFLEENVRNFVSYRRSMVLKLT LRCLVRMGYQCTFGVLQAGQYG
 VAQTRRRRAIILAAAPGEKLPFPEPLHVFAPRACQLSVVDDKKFVSNITRLSSGPFRTITVRD TMSDLP
 EIQNGASNSEIPYNGEPLSWFQRQLRGSHYQPILRDHICKDMSPLVAARMRHIPLFP GSDWRDL PNIQVR
 LGDGVIAHKLQYTFHDVKNGYSSTGALRGVCSCAEGKACDPE SRQFSTLIPWCLPHTGNRHNHWAGLYGR
 LEWDGFFSTTVTNPEPMGKQGRV LHPEQHRVVSVRECARSQGF PDSYRF FGNILDRHRQVGNVPPPLAK
 ATGLEIKLCLLSSARESASAAVKAKEEAATKD

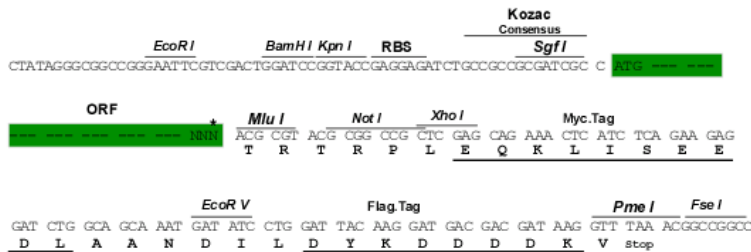
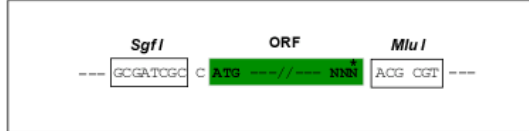
TRTRPLEQKLISEEDLAANDILDYKDDDDKV

Restriction Sites:

Sgfl-MluI

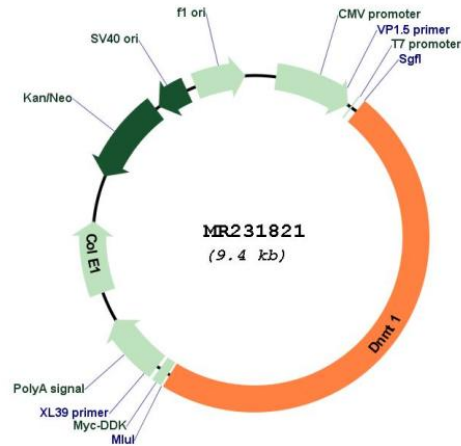
Cloning Scheme:

Cloning sites used for ORF Shuttling:



* The last codon before the Stop codon of the ORF

Plasmid Map:



ACCN: NM_001199433

ORF Size: 4506 bp

OTI Disclaimer: The molecular sequence of this clone aligns with the gene accession number as a point of reference only. However, individual transcript sequences of the same gene can differ through naturally occurring variations (e.g. polymorphisms), each with its own valid existence. This clone is substantially in agreement with the reference, but a complete review of all prevailing variants is recommended prior to use. [More info](#)

OTI Annotation: This clone was engineered to express the complete ORF with an expression tag. Expression varies depending on the nature of the gene.

Components: The ORF clone is ion-exchange column purified and shipped in a 2D barcoded Matrix tube containing 10ug of transfection-ready, dried plasmid DNA (reconstitute with 100 ul of water).

Reconstitution Method:	<ol style="list-style-type: none">1. Centrifuge at 5,000xg for 5min.2. Carefully open the tube and add 100ul of sterile water to dissolve the DNA.3. Close the tube and incubate for 10 minutes at room temperature.4. Briefly vortex the tube and then do a quick spin (less than 5000xg) to concentrate the liquid at the bottom.5. Store the suspended plasmid at -20°C. The DNA is stable for at least one year from date of shipping when stored at -20°C.
RefSeq:	NM_001199433.1 , NP_001186362.1
RefSeq Size:	5876 bp
RefSeq ORF:	4509 bp
Locus ID:	13433
UniProt ID:	P13864
Cytogenetics:	9 7.66 cM
MW:	170.4 kDa
Gene Summary:	<p>This gene encodes a methyltransferase that preferentially methylates cytosines of CpG residues in hemimethylated DNA to generate fully methylated CpG base pairs during DNA replication. This enzyme plays roles in diverse cellular processes including cell cycle regulation, DNA repair, and telomere maintenance. The encoded protein is composed of an N-terminal domain with a nuclear localization sequence and replication fork-targeting domain, a DNA-binding CXXC domain, two bromo-adjacent homology domains, and a C-terminal catalytic domain. Mouse embryonic stem cells mutant for this gene are viable, but when introduced into the germ line, cause a recessive lethal phenotype with mutant embryos displaying stunted growth and developmental defects. Alternative splicing results in multiple transcript variants. [provided by RefSeq, Sep 2015]</p>