

Product datasheet for MR231811

Col17a1 (NM_001290825) Mouse Tagged ORF Clone

Product data:

Product Type: Expression Plasmids
Product Name: Col17a1 (NM_001290825) Mouse Tagged ORF Clone
Tag: Myc-DDK
Symbol: Col17a1
Synonyms: BP180; Bpag; Bpag2
Mammalian Cell Selection: Neomycin
Vector: pCMV6-Entry (PS100001)
E. coli Selection: Kanamycin (25 ug/mL)
ORF Nucleotide Sequence: >MR231811 representing NM_001290825
 Red=Cloning site Blue=ORF Green=Tags(s)

TTTTGTAATACGACTCACTATAGGGCGGCCGGAATTCGTCGACTGGATCCGGTACCGAGGAGATCTGCC
 GCC**CGATCGCC**

ATGGATGTGACCAAGAAAAGCAAGCGAGATGGCACTGAAGTCACCGAGAGAATTGTCACGGAAACAGTAA
 CGACAAGACTTACATCCCTACCGCCAAAAGGGAGCACCAGCAATGGATATGCTAAGACAGGCTCTCTGGG
 TGGAGGAAGTCGGTTGGAGAAGCAGAGCTTGACCCATGGCAGCAGCGCTACATCAACTCAAGTGAAGC
 ATCCGAGGCAACGCTTCCACCTCCAGTTACAGGAGAACGCACTCACCGGCTCTACCTGCCAACTCTC
 CCGGCTCCACCTTTGAAAGGAAAGCTCACATGACCCGCAATGGAATTATGAAGGGAGCTCTAGCGCAA
 CTCTCCCTGAGTACCCACGAAAGGAAGTCCGCTCTTCTTCAACCAGAGGACGAAGCCAAACACGAGAG
 AGCGAAATTCGAGTTCGGTTGCAGAGCGCGTCGCCATCCACCAGATGGACAGAAGTGGATGAGGTGAAGC
 GTTTGCTTAAGGGGAGCCGCTCTGCAAGTGCAAGTCCCACCAGGAACACCTCCAACACACTCCCCATCCC
 CAAGAAAGGCACCGTAGAGACCAAAACAGTGACAGCGAGCTCCCCTCAGTGTCCGGAACCTATGATTCA
 GCAATACTGGACACCAACTTTCCGCCACATGTGGTCTCCACCTGCTGCAGGGTCTCCCTGGGGA
 CCTATCAGAACAACATAACAGCCAGAGCACATCCCTCCTCAACCAATGCCTACTCAACGGGATCAGT
 CTTTGGAGTGCCAAATAACATGGCGTCTGCTCTCCACCCTGCACCCGGACTCAGCAGTGTCTCTCA
 GTGTTTGGCATGCAGAACAATCTGGCCCCAGCTCTTCTGCTCTCCATGGCACAACCACCGCTTCCA
 CAGCATACGGAGCGAAGAAAACGTCGCCAGCCTCCCACTGTCACCAGCACCGGCGTGTCCACCTCTGC
 CACCTGCACCACAGTGTCCAGAGTGACGACCTTTGCATAAAGACTGCAAGTTCCTGATTCTGGAGAAA
 GACAACACACCAGCTAAGAAAGAGATGGAAGTCTTGATCATGACCAAGGACAGTGGGAAGGTCTTCACTG
 CCTCCCCTGCCACCATCTTCAACTTCTTTTTCAGAAGACCCCTGAAAAGGAGAAGCAGGCTGCATA
 TGCCGCTGACACCTGCCTGAAGGAGATGTGAATGGAGACCTAAATACCGTGTCCACAAAGCAAGATG
 ACCTCGGCAGAAAACCATGGCTACGACCGAGGTGGCGGTGGTGGCAGAGGCAAAGCGGAGGTGCTGGT
 GTGGCGGTGGTGGCGGTGGCGCCAGTGGCGGTGGAGGAGCATGGGGGCTGCACCAGCCTGGTCCCCTG
 CGCTCCTGCTGAGCTGGTGAAGTGGCTGCTGGCCCTGCTGCTCACCTGGCTGCTGCTGGGTCTG



[View online »](#)

CTCTTCGGCCTCATTGCTCTGGCGGAGGAGTAAGAAAGCTGAAGGCCCGCTGGAGGAGCTGGAAAAGA
CCAAGGTGCTATATCATGACGTCCAGATGGACAAAAGCAACAGGGACCGCTCCAGGCCGAGGCACCCAG
CCTGGGACCTGGATTAGGCAAGGCTGAGCTGGACGGCTACAGCCAGGAGGCCATCTGGCTGTTTGTAAAG
AACAAAGCTGATGACCGAGCAGGAGAACGGGAATCTCAGAGGAAGTCTGGTCCAAAAGGTGACATGGGGA
GTCAAGGACCTAAAGGAGACCGAGGCCCTTCTGGGACCCAGGTATCCCTGGGCCCTGGCCACCCTGG
CCCGGAAGGACCAAAGGGACAAAAAGGCAGCATGGAGATCCTGGCATGGAAGGACCCATAGGCCAGAGA
GGACTAGCAGGCCCATGGGACCTCGTGGTGAACCCGGGCCCTCTGGGTCTGGAGAGAAAGGAGACAGAG
GGATTGCTGGTGAACAAGGTCTCAGGGCCTTCTGGTGTCCAGGTCTCCGGGTCTCAGAGGTACAG
CGGCTCTCTGGTCCCCAAGGCCCCAGGTGCTGTGGTCCCCAAGGGTCCGAGGTGACGTGGGACTT
CCTGGTGTCAAAGGTGACAAAGGACTCATGGGACCACCAGGACCCAAAGGTGACCAGGGTGAAGGGAC
CCAGAGGCCCTCACAGGGGAGCCTGGCATTTCAGAGTTTGCCTGGAGCTGTGGGTGAACCCGGAGCCAAAGG
CGCAATGGGTCCGGCTGGCGCTGATGGACAGCAAGGTTCCAGAGGTGAACAAGGCTTGACAGGGATGCTT
GGAACCCGGGGCCCCCAGGACCCGCTGGAGACCCAGGAAAGCCAGGTCTCACAGGACCCAGGGACCTC
AGGGACTTCTGGTAGCCCTGGCCGACCAGGGACTAAAGGCGAACCCGGCGCTCCCGGCAGAGTCATGAC
TTCAGAGGGATCATCAACAATCACTGTGCCCGGACCTCCCGGACCTCCTGGTGCATGGGTCCCCAGGA
CCTCCAGGGACGCCAGGTCCAGCTGGCCCTGCTGGTCTCCAGGACAACAAGGCCACGAGGGGAGCCAG
GACTTGCTGGTGACTCATTCTAAGCAGTGGCAGCTCCATCTCTGAGGTCTCTCTGCCAAGGTGTTGA
CTTACGAGGTCCCCTGGCCACCTGGCCACGAGGGCCACCAGGGCCTTCCATCCAGGCCCGCCAGGA
CCCAGAGGTCCACCAGGGGAAGGCGTACCAGGCCACCCGGGCCACCAGGATCCTTCTGACTGACTCAG
AAACCTTCTTCACTGGCCCTCCAGGTCCACCCGGCCCCCAGGTCCCAAGGGAGACCAAGGTGATCCTGG
TGTCCCAGGTACTCCTGGCATCTCTGGTGGTCTTTCTCATGGGGCGTCATCAAGCACTCTGTACATGCAG
GGCCCCCTGGCCCTCCAGGGCCCCCTGGGCTCCGGGCTCCCTCAGCAGCTCCGGCCAGGATATCCAGC
ACTACATCGTGAATACATGCAAAGTGACAACATCAGGACTTATCTCAGGGGTTCCAGGGTCCCCAGC
CCCACCAGGTCCCCAGGGCCTGTCATCACCATCACAGGAGAGACTTTGACTACTCCAGCTGGCAAGC
CAGGTCTGAAGCTACTTGCAGTATCAGGCTACGGTGGTGGCTTGTCTCTGCCTCCTCAGAAGATA
TCTTGGCCATGCTGCGACGGAACGATGTGTGGCAGTACTTACGTCAGAATCTGGTGGTCTCCCGGTCC
CCCAGGGCCACCAGGCGTCAGTGGAGATGGGTCCCTCCTGTCTTTGGACTATGGAGAGCTGAGCAGACAC
ATTCTCAACTATATGTCAAGTTCTGGGATCAGCTTTGGGCATCCTGGCCACCCGGGACCCCTGGCTGC
CAGGAACATCCTACGAGGAGCTACTGACCATGCTCCGAGGGTCTGACTACAGAAACATCATTGGACCTCC
AGGGCCCCAGGGCCACCCGGGATGCCAGGCAATGCATGGTCCAGCATCAGTGTGGAGGACCTCTCATCA
TACTTGACACCCGCTGGTTTGTCTCCATCCCAGGCCCTCCAGGCCACCAGGGCCCCAGGTCTCGAG
GGCCCCCAGGTGTCTCAGCAGCTGTGCCACCTATGCAGCTGAGAACAGCGACAACCTCCGAGCGAGCT
GATTAGCTACCTACAAGTCTGATGTTTCGAGCTTTCATCGTTGGCCCTCCAGGCCCTCCGGGGCCACAG
GGACCCTGGAGATGGTCACTTAAGGGAGAATAACAACCTGGAGCAGCAACTCCTCAGCCAGAAGGGGCA
CTTCTACAGCTCTTCCACGGGCACAGGGGGAACCAACGGAGGCTCCCTGGGTGAAGGTGGAGCCTATGG
TGCAGGAGATGGGGGCCCTATGGTACCGACATCGGCCAGGGCGGAGGCTATGGGGCAGCTGCAGGTGGT
GGTATATATGGCACCAATGGTACTCGTCCGGGATGGCTTCACTGGAGACCTAGATTACAACAAGCTGG
CAGTGGGGGTGTCGGAGAGCATGCAGCGTCAGGGTCTGCTACAAGGGATGGCCTACACTGTCCAGGGCCC
ACCTGGGCCCCAAAGGCCCTCCTGGCATCAGCAGGGTCTTCTCAGCCTACAGCAACGTGACACAAGACCTC
ATGGACTTCTTCCAACCTACGGCACTATCCCGGACCACCTGGGCAGAAGGGAGATGTGGGAACCCAG
GCCCAAAGGTGACAGGGGCCCTGCTGGACCACGAGGTCTCCAGGGCCACCCGGCCCCAGAGGGAACAA
AGGAGAGAAAGGAGACAAAGGTGACCAAGTCTATACTGGGAGAAGGAAGAGAAGTATTGCCATCAAGCCG

ACGCGTACGCGGCCGCTCGAGCAGAACTCATCTCAGAAGAGGATCTGGCAGCAATGATATCCTGGATT
ACAAGGATGACGACGATAAGGTTTAA

Protein Sequence: >MR231811 representing NM_001290825
 Red=Cloning site Green=Tags(s)

MDVTKKSKRDGTEVTERIVTETVTRLTSLPPKGSTSNGYAKTGSLLGGGSRLEKQSLTHGSSGYINSSGS
 IRGNASTSSYRRTHSPASTLPNSPGSTFERKAHMTRHGTYEGSSSGNSSPEYPRKELASSSTRGRSQTRE
 SEIRVRLQASASPSTRWTELDEVKRLKGSRSASASPTRNTSNTLPIPKKGTVETKTVTASSHSVSGTYDS
 AILDNTNFPHMWSSTLPAGSSLGTYQNNITAQSTSLNNTNAYSTGVSFVGPNNMASCPTLHPGLSSCSS
 VFGMQNNLAPSSSVL.SHGTTTASTAYGAKKNVQPPTVTSTGVSTSATCTTSVQSDDLLHKDCKFLILEK
 DNTPAKKEMELLIMTKDSGKVFTASPATISSTSFSEDTLKKEKQAAYAADTCLKADVNGDLNVTSTKSKM
 TSAENHGVDYRGGGGGRGKGGGAGGGGGGGASGGGAWGAAPAWCPCGCCSWSWKWLLGLLLTWLLLLGL
 LFLGLIALAEVRLKARVEELEKTKVLYHDVQMDKSNRDLQAEAPSLGPGLGKAEIDGYSQEAIWLFVR
 NKLMTQENGLRGSPGPKGDMGSQGPKGDRGLPGTPGIPGPGHPGPEGPKGQKGSIGDPGMEGPIGQR
 GLAGPMGPRGEPGPPGSGEKGDRGIAGEQGPQGLPGVPGPPGLRGHSGSPGQPPGAVGPQGLRGDVG
 PGVKGDKLGMPPGPKGDQGEKGPRLTGEPGIRGLPGAVGEPGAKGAMGPAGADGQQSRGEQGLTGMP
 GTRGPPGAGDPKPGPLTGPQGPQGLPGSPGRPGTKGEPGAPGRVMTSEGSSITIVPGPPGPPGAMGPPG
 PGTPGPAAGPAGLPGQQGPRGEPGLAGDSFLSSGSSISEVLSAQVDLRRPPGPPGPRGPPGPSIPGPPG
 PRGPPGEGVPGPPGPGSFLTDSEFFFTGPPGPPGPPGPKGDQGDVPGTPGISGGLSHGASSSTLYMQ
 GPPGPPGPPGPPGSLSSSQDIQHYIAEYMQSDNIRTYLSGVQGPVPPGPPGPPVITITGETFDYSQLAS
 QVVSYLSSSGYGAGLSSASSSEDILAMLRNDVWQYLRQNLVGPVPPGPPGPPGVSVDGSLSLDYGELSRH
 ILNYMSSSGISFGHPGPPGPPGLPGTSEYELLTMLRGSYRNIIGPPGPPGPPGMPGNAWSSISVEDLSS
 YLHTAGLSSIPGPPGPPGPPGPPGPPGVSAAALSTYAAENDNFRSELSYLTSPDVSFIVGPPGPPGPPG
 GPPGDGHLRENYNWSNSARRGTSYSSSTGTGGTNGGSLGEGGAYGAGDGGPYGTDIGPGGYGAAGG
 GIYGTNGDSFRDGFDTGLDYNKLAVRVSESMQRQGLLQGMAYTVQPPGPPGPPGIRVFSAYSNVTQDL
 MDFFQTYGTIPGPPGQKGDVGTGPKGDRGPAGPRGPPGPPGPRGNKGEKGDQVYTGRRKRSLAIKP

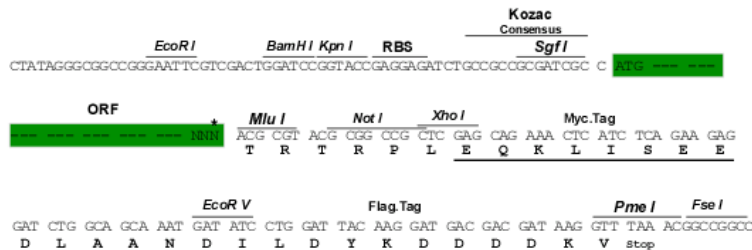
TRTRPLEQKLISEEDLAANDILDYKDDDDKV

Restriction Sites:

Sgfl-MluI

Cloning Scheme:

Cloning sites used for ORF Shuttling:



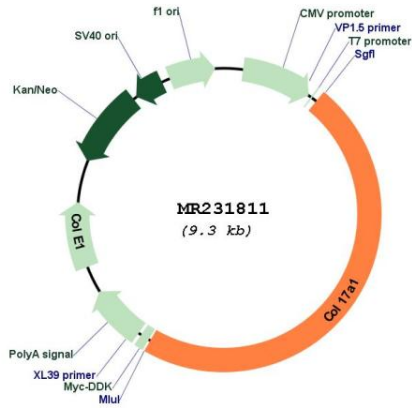
* The last codon before the Stop codon of the ORF

ACCN: NM_001290825

ORF Size: 4410 bp

OTI Disclaimer:	The molecular sequence of this clone aligns with the gene accession number as a point of reference only. However, individual transcript sequences of the same gene can differ through naturally occurring variations (e.g. polymorphisms), each with its own valid existence. This clone is substantially in agreement with the reference, but a complete review of all prevailing variants is recommended prior to use. More info
OTI Annotation:	This clone was engineered to express the complete ORF with an expression tag. Expression varies depending on the nature of the gene.
Components:	The ORF clone is ion-exchange column purified and shipped in a 2D barcoded Matrix tube containing 10ug of transfection-ready, dried plasmid DNA (reconstitute with 100 ul of water).
Reconstitution Method:	<ol style="list-style-type: none">1. Centrifuge at 5,000xg for 5min.2. Carefully open the tube and add 100ul of sterile water to dissolve the DNA.3. Close the tube and incubate for 10 minutes at room temperature.4. Briefly vortex the tube and then do a quick spin (less than 5000xg) to concentrate the liquid at the bottom.5. Store the suspended plasmid at -20°C. The DNA is stable for at least one year from date of shipping when stored at -20°C.
RefSeq:	NM_001290825.1 , NP_001277754.1
RefSeq Size:	5539 bp
RefSeq ORF:	4413 bp
Locus ID:	12821
UniProt ID:	Q07563
Cytogenetics:	19 40.07 cM
MW:	148.4 kDa
Gene Summary:	May play a role in the integrity of hemidesmosome and the attachment of basal keratinocytes to the underlying basement membrane.[UniProtKB/Swiss-Prot Function]

Product images:



Circular map for MR231811