

Product datasheet for **MR231810**

Magi1 (NM_001286784) Mouse Tagged ORF Clone

Product data:

Product Type: Expression Plasmids
Product Name: Magi1 (NM_001286784) Mouse Tagged ORF Clone
Tag: Myc-DDK
Symbol: Magi1
Synonyms: AIP3; Baiap1; BAP1; Gukmi1; Magi-1; MAGI1c; mKIAA4129; TNRC19; WWP3
Vector: pCMV6-Entry (PS100001)
E. coli Selection: Kanamycin (25 ug/mL)
Cell Selection: Neomycin
ORF Nucleotide Sequence: >MR231810 representing NM_001286784
Red=Cloning site Blue=ORF Green=Tags(s)

TTTTGTAATACGACTCACTATAGGGCGCCGGGAATTCGTCGACTGGATCCGGTACCGAGGAGATCTGCC
GCC**CGATCGCC**

ATGTCGAAAGTGATCCAGAAGAAGAACCCTGGACTGGCCGCGTTACGAGTGCACCGTGAAGCGGGGAC
CCCAGGGCGAGCTGGGGGTGACGGTCTGGGGGCGCGGAGCATGGGAGTTCCGTACGTGGGGCGGT
GGCGGCGCCGAGGCGGGGGGTTCCCGCGGTGGCGAGGGGCCGAAGCTGGCCGAAGGTGAGCTGCTG
CTGGAGGTGCAGGGGGTCCGGGTGTCCGGCTTGCCCGCTATGACGTGCTGGGAGTCATCGACAGCTGCA
AGGAGGCCGTACCTTCAAAGCCGTCAGACAAGGAGGAAGGCTCAACAAGGACCTACGACATTTCTCAA
CCAACGGTTCCAGAAGGGGTCTCCAGATCATGAGCTCCAGCAGACCATAAGGGACAACCTTACCGCCAT
GCTGTGCCTTGCACAACCCGGTCTCCAGAGAAGGAGAAGTGCCTGGTGTGGATTACAGCTTTCTGACTG
TGAAGGAGTTCTTGACCTCGAGCAGAGCGGGACCCTGTTGGAAGTCGGCACCTATGAAGGAAACTATTA
TGGGACACCCAAACCTCTAGCCAGCCAGTCAGTGGGAAAGTGATCAGCAGCGATGCCTTGACAGCCTG
CAGTCTGGCTCCAAGCAGTCGACCCCTAAGCGAACAAGTCTACAATGATATGCAAAATGCTGGCATAG
TCCACCCGGAGAATGAGGAGGAGGAGTGTCCCTGAAATGAACAGTAGCTTTACAGCCGACTCTGGAGA
CCAGGACGAGCACACTCTCCAAGAAGCAACGCTCCCGCCTGTGAATAGTAGCATCCTCGCTGCTCCCATC
ACGGACCTTCTCAGAAGTTCCTCAGTACCTACCTCTTTCTGCAGAGGATAATTTAGGTCTCTACCTG
AAAAGTGGGAGATGGCCTATACTGAAAATGGAGAAGTCTATTTTATAGACCACAACAGAAAACAACATC
ATGTTAGACCCTCGGTGCCTGAACAAACAGCAGAAGCCTCTGGAAGAATGTGAAGATGATGAGTTGCC
GCTGGCTGGGAAAAGATTGAAGACCCTGTCTACGGTGTCTACTATGTAGACCACATCAACAGGAAGACGC
AATATGAAAACCCAGTCTAGAAGCCAAACGGAAGAAACAGCTTGAACAGCAGCAGCAACAGCAGCAGCC
TCAGCCACCGCAGCCAGAAGAGTGGACAGAGGATCATGCATCTGTTGTGCCTCCTGTTGCTCCTCCCAT
CCCCGAGCAATCCGGAGCCAGCCAGGAACTCACTTCAGGGCAAACCTTTTTTTACAAGAAACCCCT
CTGAGCTGAAAGCAAGTTCATTCACACGAAGCTACGGAAAAGCAGCCGAGGCTTTGGCTTACGGTGGT
TGGAGGAGACGAGCCTGATGAGTTCCTGCAGATCAAGAGCCTCGTCTCGATGGTCTGCCGCACTGGAT
GGCAAGATGGAGACAGGGATGTAATTGTGAGTGTGAATGACACCTGTGTTTTGGGACACACACATGCTC



AAGTTGTGAAAATCTTCCAGTCCATTCCCATTGGTGCCAGTGTGGACCTTGAACCTGCAGAGGTTATCC
ATTGCCTTTTGACCCGGATGACCCTAATAACAAGTTTAGTGACCTCGGTGGCCATTTTGGACAAAGAACCA
ATTATTGTAATGGACAAGAGACCTACGATTACCAGCGAGCCACAGTAGTAAAAACAGGCAAAGTCAGCA
GCATGAAGGATGCCAGGCCAAGCAGCCCTGCTGATGTGGCTTCCAACAGCTCTCATGGTTATCCCAACGA
CACAGTCTCCTTGGCTTCTCCATAGCCACCCAGCCAGAGCTAATAACTGTTACATAGTCAAAGGGCCA
ATGGGATTTGGCTTTACGATCGCAGACAGTCCCCTGGGGTGGCCAAAGAGTGAACAGATTGTTGACA
GTCCACGCTGCAGAGCCCTCAAAGAAGGGGATCTTATCGTGGAGGTGAATAAGAAGAACCTGCAGGCCCT
GACGCACAATCAAGTCGTGGATATGCTGATTGAATGTCCCAAGGGAAGTGAGTCACTGTTGGTGCAG
CGAGGAGGGCTACCAGTTCCTCAAGAAGAGCCAAAGTCGAGCCACTGGAGAGGAAAGACAGCCAGAATA
GCTCCCAGCACAGCGTCTCCAGCCACCGGAGCCTGCACACTGCGTCCCCGAGCCACGGCATAACAGGTGCT
CCCTGAGTACCTACCTGCAGACGCCCTGCTCCAGATCAGACCGACAGCTCTGGGAGAAAAAGCCAGAT
CCTTTTAAAATCTGGGCCAGTCCAGGAGCATGTATGAAAACCGACCTATGTCACCTTCGCTGCATCAG
GATTGAGCAAGGGTGAAGAGACAGAGAAATCAATCCACGAATTTGGAGAATGCAGATTCCAGATTA
CCAGGAACAGGACATCTCCTCTGGAGAAAAGAAACCGGATTTGGATTTAGGATTCTGGGTGAAATGAA
CCAGGGGAACCCATTTATATCGGTACATCGTACCGCTGGGTGCTGCTGACACAGACGGCCGCTGAGGT
CTGAGATGAATTAATCTGTGTGGATGGGACACAGTAATTGGGAAATCACACCAGCTCGTGGTCCAGCT
TATGCAACAAGCTGCAAGCAAGGCCATGTCAATCTCACAGTGAAGCGGAAAGTGGTCTTTGCCGTCCTCC
AAAGCAGAGAATGAGGTGCCCTCACCAGCCTCATCACACCACAGTAGCAACCAGCCCGCTCCCTGACGG
AGGAGAAAACGCACACCGCAAGGCAGCCAGAACTCTGTAACACTGTGAGCTCTGGCAGCGGCAGCACCAG
TGGCATTGGCAGTGGTGGCGGGGGCAGCGGTGTGGTGAAGCGTGTGCTGCAGCCCTATGATGTGGAG
ATTCGGCGTGGGAGAACGAGGGCTTTGGGTTTGTATCGTGTCTCCGTGAGCAGACCCGAAGCGGGCA
CAACCTTCGGCAATGCATGTGTGGCTATGCCTCACAATAAGTTCGGATTATTGAGGGGAGCCCTGCTGA
CCGCTGTGGCAAGCTGAAAGTAGGAGACCGGATCTTGGCAGTAAATGGATGTTCCATCACCAAAATCC
CATTCTGACATTGTCAACCTAATCAAAGAAGCGGGCAACACAGTACTCTCCGCATCATCCCCGGGGATG
AGTCTCAAATGCCACGCTGCTGACTAATGCTGAGAAGATTGCCACCATACCACCACTCATGCCCCCTC
TCAGCAGGGGACCCAGGAAAAGGACCACCACCAAAAGCAGGATTCTCAGTTTGAAGTTCAAAGGA
CCGAGGCTGCACAGGAGCAAGATTTTACTACTGTGGAATTGAAAGAGGGGGCAAGGGATTTGGCTTTA
GTCTTCGAGGGGGCCGAGAATATAACATGGATCTTTATGTTCTGCGCTTGGCAGAGGATGGTCTGCAGA
AAGATGTGGGAAGATGAGGATTGGCGATGAAATCTAGAGATCAATGGTGAAGACCACCAAAACATGAAA
CACTCTCGGGCCATAGAAGTATCAAGAATGGCGGCCAGGGTCCGTCTGTTTCTGCGGGGGAGACG
GCTCAGTCCCAGAATATGACCCAGCAGCGACAGGAACGGCCCTCCACCAGTGCACAAGGTGTTCCGGA
AGTGAGGCCGGGGCCAGACCACAGACCGCATCCAGCCTTGGAGTCCAGTTACCCACCCGAATTCAC
AAATCATCACAACATGCCGAAAAGCGAGCACACCGAAGGATCCAAAAGCAACAGGGAGCACAGCAAAAC
AACCCAACGAACATCACACCTGGAATGGAATTTAGAAAACAGGACAGCGGGGCATGCCGGCCAAAGA
CCGGCCACCCGACGATGGAGAGAGGGCGAGCCAGAGCGGACAGCCACCAATGGTTCAAAGAGGAGGTCA
CCGGAGAAGCGCAGGGAAGGCACCCGACGCTGACAACACTTTGGAAAGAAGGGAGAAGCATGAGAAGA
GAAGAGAGATATCTCCGAGAGGAAGCGAGAGCGTTACCCACCCGAGAAAAGATAGTCCCCGAGCCG
CCGGCGGAGGTCCCTCGAAAGACTCCTGGATCAAAGACGGTCCCAGAGCGCAGAAGAGGGGGCTCCCC
GAGAGGAGAGCCAAATCCACCGACAGGAGGAGGCCAGGTCCCCTGAGCGCAGGCGAGAGCGGTCACTGG
ACAAAAGGAACCCGGGACGACAAGGTTGGCCACCGAAGAGAGAGGAGGCTGGTCTGAAGCTGGAAGCGGG
GAGAAGCCCCGAAATCCCCAGAGCAGAGAAGGCGCCTTACAAGAATGTAGCACCGACCTCAGCATC

ACGCGTACGCGGGCGCTCGAGCAGAACTCATCTCAGAAGAGGATCTGGCAGCAATGATATCCTGGATT
ACAAGGATGACGACGATAAGGTTTAA

Protein Sequence: >MR231810 representing NM_001286784
Red=Cloning site Green=Tags(s)

MSKVIQKKNHWTGRVHECTVKRGPQGELGVTVLGGAEHGEFFPYVGAVAAAEEAAGLPGGGEGPKLAEGELL
 LEVQGVVRSGLPRYDVLVIDSCKEAVTFKAVRQGGRLNKDLRHFLNQRFKQKSPDHELQQTIRDNLYRH
 AVPCTTRSPREGEVPGVDYSFLTVEKFLDLEQSGTLLEVGTYEGNYGTPKPPSQPVSGKVITTDALHSL
 QSGSKQSTPKRRTKSYNDMQRNAGIVHPENEEEDVPEMNSSFTADSGDQDEHTLQEATLPPVNSSILAAPI
 TDPSQKFPQYLPLSAEDNLGPLPENWEMAYTENGEVYFIDHNTKTTSWLDPRCLNKQQKPLEECEDEL
 AGWEKIEDPVYGVYVVDHINRKTQYENPVLEAKRKKQLEQQQQQQPQPPEEWEDHASVVPVAPSH
 PPSNPEPARETPLQGKPFTRNPSELKGFIIHTKLRKSSRGFGFTVVGDEPDEFLLQIKSLVLDGPAALD
 GKMETGDVIVSNDTCVLGHTHAQVVKIFQSIPIGASVDLELCRGYPLPFDPPDNTSLVTSVAILDKEP
 IIVNGQETYDSPASHSSKTGKVSMMKARPSSPADVASNSSHGYPNDTVSLASSIATQPELITVHIVKGP
 MGFGFTIADSPGGGGQRVKQIVDSPRCRGLKEGDLIVEVNKNVQALTHNQVVDMLIECPKGSEVTLVQ
 RGGLPVPKKSPKSQPLERKDSQSSQHSVSSHSLHTASPSHGIQVLEPYLPADAPADQDSSGQKKPD
 PFKIWAQSRSMYENRPMSPASGLSKGERDREINSTNFGECPIDYQEQDIFLWRKETGFGFRILGGNE
 PGPEIYIGHIVPLGAADTDGRLRSGDELICVDGTPVIGKSHQLVVQLMQAAKQGHVNLTVRRKVVFAVP
 KAENEVSPASSHHSSNQASL TEEKRTPQGSQNSLNTVSSGSGSTSGIGSGGGGGSGVSAVLQPYDVE
 IRRGENEGFGFVIVSSVSREAGTTFGNACVAMPHKIGRIIEGSPADRCGKLVGDRILAVNGCSITNKS
 HSDIVNLIKEAGNTVTLRIIPGDESSNATLLTNAEKIATITTTTHAPSQQGTQETRTTTKPKQDSQFEFKG
 PQAAEQDFYTVELERGAAGKGFSLRGGREYNMDLYVLRLAEDGPAERCGKMRIGDEILEINGETTNNMK
 HSRAIELIKNGRRVRLFLRRGDGVSPEYDPSDRNGPSTGAQGVPEVRPDPDHRHPALESSYPPELH
 KSSQHAEKRAHAKDPKGNREHSKQPNEHHTWNGTSRKQDSGACRPKDRPPDAWREAQPERTATNGSKRRS
 PEKRRREGTRSDANTLERREKHEKRREISPERKRERSPTRRKDSSPSRRRRSLERLLDQRRSPERRRGGSP
 ERRAKSTDRRRARSPERRRERSLDRNRDDKVGHREEREAGLKLKLEAGRSPRNPEQRRRPYKCESTDLSI

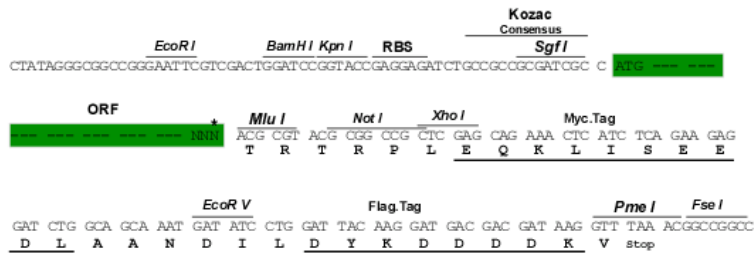
TRTRPLEQKLISEEDLAANDILDYKDDDDKV

Restriction Sites:

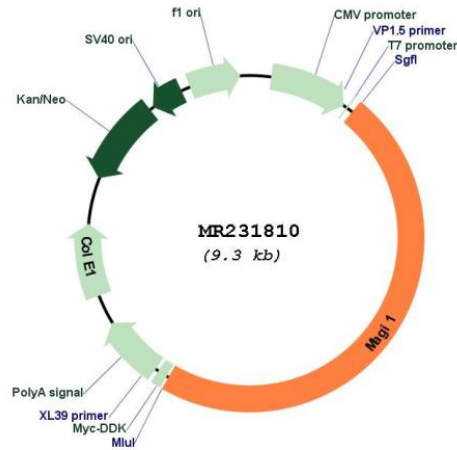
Sgfl-MluI

Cloning Scheme:

Cloning sites used for ORF Shuttling:



* The last codon before the Stop codon of the ORF

Plasmid Map:


ACCN: NM_001286784

ORF Size: 4410 bp

OTI Disclaimer: The molecular sequence of this clone aligns with the gene accession number as a point of reference only. However, individual transcript sequences of the same gene can differ through naturally occurring variations (e.g. polymorphisms), each with its own valid existence. This clone is substantially in agreement with the reference, but a complete review of all prevailing variants is recommended prior to use. [More info](#)

OTI Annotation: This clone was engineered to express the complete ORF with an expression tag. Expression varies depending on the nature of the gene.

Components: The ORF clone is ion-exchange column purified and shipped in a 2D barcoded Matrix tube containing 10ug of transfection-ready, dried plasmid DNA (reconstitute with 100 ul of water).

Reconstitution Method:

1. Centrifuge at 5,000xg for 5min.
2. Carefully open the tube and add 100ul of sterile water to dissolve the DNA.
3. Close the tube and incubate for 10 minutes at room temperature.
4. Briefly vortex the tube and then do a quick spin (less than 5000xg) to concentrate the liquid at the bottom.
5. Store the suspended plasmid at -20°C. The DNA is stable for at least one year from date of shipping when stored at -20°C.

RefSeq: [NM_001286784.1](#), [NP_001273713.1](#)

RefSeq Size: 7803 bp

RefSeq ORF: 4413 bp

Locus ID: 14924

Cytogenetics: 6 D1

MW: 162.2 kDa

Gene Summary: May play a role as scaffolding protein at cell-cell junctions. May regulate acid-induced ASIC3 currents by modulating its expression at the cell surface.[UniProtKB/Swiss-Prot Function]