

Product datasheet for MR231809

Eif4g3 (NM_001256198) Mouse Tagged ORF Clone

Product data:

Product Type: Expression Plasmids
Product Name: Eif4g3 (NM_001256198) Mouse Tagged ORF Clone
Tag: Myc-DDK
Symbol: Eif4g3
Synonyms: 1500002J22Rik; 4930523M17Rik; eIF4GII; G1-419-52; repro8
Vector: pCMV6-Entry (PS100001)
E. coli Selection: Kanamycin (25 ug/mL)
Cell Selection: Neomycin
ORF Nucleotide Sequence: >MR231809 representing NM_001256198
 Red=Cloning site Blue=ORF Green=Tags(s)

TTTTGTAATACGACTCACTATAGGGCGCCGGGAATTCGTCGACTGGATCCGGTACCGAGGAGATCTGCC
 GCC**CGGATCGCC**

ATGAACTCACACCTCAGGCCGGTCTCCGGGAGGATTCAGACCCATCCAGTTTTCCAGAGGCCTCAA
 TCCAGCCTCCCGAGCTGCCATCCAAACAGCAGTCCTTCCATCCGTCGGGTGTCAGACCCCCACCGC
 CGTGTATCAGGCCAACCAGCACATCATGATGGTTAACCATCTGCCATGCCGTACCCCGTGACCCAGGGG
 CATCAGTACTGCATACCACAGTACCGCCACAGCGCCCTCCGTACGTGGGGCCCCACAGCAGTATCCAG
 TTCAGCCCGCTGGGCCGGGGCCTTTTTATCCTGGACCAGGACCTGGGGACTTCGCTAATGCTTATGGAAC
 GCCTTTTTACCCAAGTCAGCCAGTGTATCAGTCAGCACCTATCATAGTGCCTACGCAGCAGCAGCCCCCT
 CCAGCCAAGAGAGAGAAAAAATAAGAATTCGAGATCCAAATCAGGGAGGTAAGACATAACAGAGG
 AGATTATGCTGGAGGTGGCAGCAGAAATCCCACTCCACCTATAGGAAGACCCGCATCCACTCCCCTCC
 TCCTCAGCAGTCCCCAGCCAGGTCCCTGAGCACAGCCCTGTGGTATATGGGACTGTGGAGAGCGCTCAT
 CTTGCTGCCAGCACCCCTGTCACTGCAGTAGCGACCAGAAGCAAGAAGAAAAGCCAAAACAGATCCAG
 TGTCCAGTCTCCTTCGACGGTCCTTAGGCTCGTACTCAGTGGGAGAAGAAAGCAAGCAGCCAGTCCAG
 GCCTGAGACTGCTGCAGGAGAGCCACCCAGAGCCTCCTCGGACTTCATCACCCACAGCCTTCCTCCA
 CTTGCCCGGAGTTCACTTCCTTCCCCATGTCCGCTGCCCTTAGCAGCCAGCCACTGTTCAGTCTGAGG
 ACAAGTGTGAACCTCCTTCTCCAAAGAAGAAGATGCACCTCCTGTCCCCAGCCCCACGTCTTGACAGC
 AGCCTCAGGCCCTTCACTAACAGATAACAGTGATATATGCAAGAAACCCTGTAGCGTAGCGCCTCATGAT
 AGTCAGCTAATTTCTAGTACTATCCTAATTAATGAAATGAATGGAGTTGGAGAAAAATTATCAGCCAAGG
 AGAACACTGTGGGCATGCTGAGACAGGAAGTGTGCCATTGACTCTCGAGTTAGAGATTCTGGAACATCC
 ACAGGAAGAATTGAAAGTGAATGTACGCCGACTCCCATGCCCCGTCCATGCTGCCTGCCTTCTCCCCA
 GCTCCTCCGACTCCCCCACTTCTCCTCCTGTCTCCGTTGTCTCTCTGCCGCCATTGCTCGTTCTC
 CCGCTGTTGCCACTGAGGTCCAGAGAGTCCGCCAGGAGGAGAAAGCCTGAGAAGTTGCCTTAGCAAGGA
 TGCAAAGGAGATGCAGGACAAAGCAGAGTCAGAATCAGATGGGCAAGCAGAAGAGACTGCGGATCCCCAG
 AGCCTACATTCAGGAAGGAGCCCCGCCAGTGCAAACAGCTACCACTGCGCCAAAGTCTGGAAGAAAA



CAAAGAGCAGACCCGAACCCAGATGAAGTGTAGAAGCAGAGGCAGAGCCTAAAGCCGAAGAAGAGCT
TGCAAGTGTGACAGTGTCTTGAGCCTGAGCAAGAGAAGATGAGCCAAGGGTTTCCGTCTGAGAGAGACCC
TCTGCCCTGAAGAGAGGGAAAGCTGAGGAAGGAAACGGAGAAGAGGCTGAGCCTGTGCGAAATGGCGCTG
AGAGTGTCTGAGGGGGAGGGGGAGATGGCAACTCAGGCTCTGCTGACAGCTCTGCTGATGGGCTCAC
CTTCCCCTTAAAGCAGAGTCTTGAAGCCTGCAGATACAGAAGGCAAGAAGCAGTATGACCCGGAGTTC
CTACTGGACATCCAGTTTATGCCCGCTGTATCCAAAAACCAGAAGGCCTGCCTCCCATCAGCGACGTGG
TCCTTGACAAGATCAACCAGCCAGATTGTCAATGCGGACCCTGGATCCTCGCATTTTGCCTCGAGGAC
TGACTTACCCAGCCTTTGACAGCTTTCCAAGGCAAACGCTGTGGAAGAGGTGTGCCTCTGTTGAAT
GTTGGACCTCGGAGGTCTCAACCTGGCCAGAGAAGGGAGCCAGAAAGATAATCACTGTCTCCGTA
AAGATGTGCACTTGAGAAAGCGGAGAATGCCTGGAAGCCGAGCCAGAAACGGGACAGCCACGCCGATGA
CCCCGAAAGCATTAAACTCAGGAACCTTTTTCAGAAAAGTTCGAAGTATCTTGAATAAACTGACACCACAG
ATGTTCAACCAGCTGATGAAGCAAGTGTGCGCTTACGGTGGACACGGAGGAGCGGCTAAAAGGGTCA
TCGACCTGTCTTGAAGGCTATCGATGAGCCAGCTTCTGTGGCGTACGCAAACATGTGTGGTG
CCTAGTAACGCTGAAGGTGCCATGGCAGACAAGCCTGGCAACACAGTGAATTTCCGGAAGCTGCTGCTT
AACCGCTGCCAGAAGGATTCGAGAAAGACAAAGCAGATGATGACGTCTTTGAGAAGAAGCAGAAAGAAC
TGGAAAGCTGCCAGCGCTCCAGAGGAGAGGACAAGGCTTACGACGAACTGGAAGAAGCCAAAGACAAGC
CCGGCGGAGATCCATCGGCAACATCAAGTTCATTGGAGAACTCTTTAAACTGAAAATGCTGACGGAGGCC
ATCATGCATGACTGTGTGGTGAAGCTCCTGAAGAACCACGATGAAGAGTCCCTGGAGTGCCTGTGTGCGC
TGCTCACCACCATCGGCAAAGACCTGGACTTTGAGAAAGCAAAGCCACGCATGGACCAGTACTTTAACCA
GATGGAGAAAAATCGTCAAAGAAAGAAAACTTCTCCAGAATTCGGTTCATGCTTCAGGATGTAATCGAC
CTCAGACTGTGTAATGGGTGTCCCGAAGAGCAGATCAGGGGCCAAAACTATCGAGCAGATTACAAAG
AGGCCAAAATAGAAGAACAGAGGAGCAGAGGAAAGTCCAGCAGCTGATGACCAAGGAGAGAGGAGACC
AGCGTCCAAAGAGTGGATGAAGGTGGATGGAATACTGTACAAGGGGCCAAGAACAGTCTGTACTGGAC
CCCTCCAAATTTTGAATAACTAAACCACCATTTGATGAGAAGATTCAGCTGGTTCTAAGGCACAGC
TGGCAGCTGGGGCAAAGGCAGCAGCGGGGAGCAAAGGCAAGTGAAGTCCGATGCCTTACGGTCAAGTGC
TTCCAGTTTAAATAGATTCTCTCTCTGCAACCTCCAGCACCTTTCAGGGTCCCGTCCGCCACACCTTA
GAGTTTGATTCCCGAAGGGCGTTAACAGTCTGTTGGAGCATGGGCAGGAGAGAGCGACAAGCCAAATTC
CAGCTGGAACAGCCCGTCCCAACAGTTCCTGAGGGCAGCAGCAAAGACCTGCTGGACAACCAGTCCCA
GGAAGAGCAGCGCAGAGAGATGTTGGAGACCGTGAACAGCTGACAGGAGGCTGGATGCTGAGCGGGCC
AGCACTGAGGCCGACCGAAGCAAACGAGGGAGCTAGCAAAATCGGAAATGTGTGACAGTCCAGCCCTG
ACAAGCCTGCACTGTGAGAAGAGGAAGTGGAGAGGAAGTCCAAGTCTATCATTGACGAATCTTACACAT
CAATGACTTTAAGGAGGCCACGCAGTGCATAGAGGAGCTGAGCGCCAGGGCCCACTGCATGTGTTGCTG
AAGGTGGGTGTGGAGTTCACCCTGGAACGGAGCCAGATCACAGGGACCACATGGGCCACTTACTGTATC
AGCTGGTGCAGTCAAAAACTCAGCAAGCAGGACTTTTTCAAAGTTTTTCTGAAACCTTGGAGTTGGC
AGATGACATGGCCATTGATATCCCATATTTGGTTGTACCTGGCTGAACTGGTCAACCCCATGTTAAAA
GGAGGGGGGATTTCCATGAGAGAATTTATGTTGAATTCAGCAAGCCATTAATCTCTGTTGGCAGAGCTG
GGTCTGCTTTCTGAAATCCTACACCTTCTATGCAGACAAATGAGCCATAAGAAAGTAGGCGCCCTGTG
GAGGGAGGCTGACCTCAGCTGGAAGGACTTTTTACCGAAGGGGAAGATGCCATCATTTTCTCTGGAG
CAGAAGTTGGACTTACGGAATCCGAAGGGCCCTGCTCCTCTGAGGCAGTGTCAAAGAAGGAGCTGTCTG
CCGAGGAGCTGTCTCAGCGCTGGAAAAGCTCATCATGGAGGAGAAAGCGGATGACGAGCGGATCTTTGA
CTGGTGGAGACTTGTCCGGATGTTTTTGTGCTGTATGACGAGGAGG

ACGCGTACGCGGCCGCTCGAGCAGAACTCATCTCAGAAGAGGATCTGGCAGCAATGATATCCTGGATT
ACAAGGATGACGACGATAAGGTTTAA

Protein Sequence: >MR231809 representing NM_001256198
 Red=Cloning site Green=Tags(s)

```

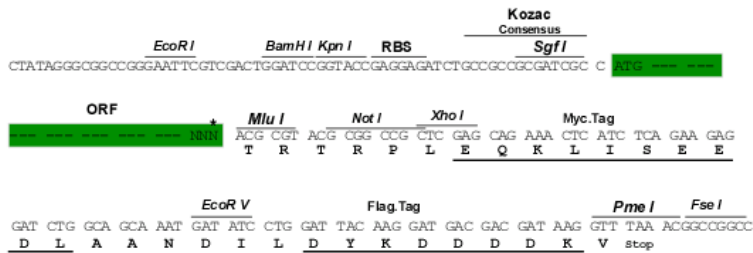
MNSQPQARSPGGFRPIQFFQRPQIQPPRAAIPNSSPSIRPGVQTPTAVYQANQHIMMVNHLMPYPVTQG
HQYCIQYRHSGPPYVGGPPQYVQPPGPGPFYFGPGGDFANAYGTPFYPSQPVYQSAPIIVPTQQPP
PAKREKTIIRIRDPNQGGKIDITEEIMSGGSRNPPTPIGRPASTPTPPQQLPSQVPEHSPVYGTVESAH
LAASTPVTAASDQKQEEKPKDPVFQSPSTVLRRLVLSGEKKEQAGQMPETAAGEPTPEPPRTSSPTSLPP
LARSSLPSMMSAALSSQPLFTAEDKCELPSSKEEDAPPVPSPTSCTAASGPSLTDNSDICKKPCSVAPHD
SQLISSTILINEMNGVGEKLSAKENTVGMRLRQEVLPLELEILEHPQEELKVECTPTPIAPSMLPAFSP
APPTPPTSPPCPPVLSAAIARSPAVATEVQRVADEGESLRTCLSKDAKEMQDKAESES DGQAEETADPQ
SLHSGRSPAPVQTATTAPKSWKTKQTRTPDEVLEAEAEPAKEEELAVDSVLEPEQEKMSSQGFPSERDP
SALKRGAEEGNGEEAEVPRNGAESASEGEGDGNSSADGLTFPFKAESWKPADTEGKKQYDREF
LLDIQFMPACIQKPEGLPPIISDVVLDKINQRL SMRTLDPRI LPRGPDFTPAFADFRQTPGGRGVPLLN
VGPRRSQPGQRREPRKIIITVSVKEDVHLRKAENAWKPSQKRDSHADDPESIKTQELFRKVR SILNKLT PQ
MFNQLMKQVSALTVDTEERLKGVIDLVFEKAIDEPFSVAYANMCRCVLTKVPMADKPGNTVNFRLKLL
NRCQKFEFEKDKADDDVFEKKQKELEAASAPEERTR LHDELEEAKDKARRRSIGNIKF IGELFKLKMTEA
IMHDCVVKLLKNHDEESLECLRLTTIGKDLDFEKAKPRMDQYFNQMEKIVKERKTSSRIRFMLQDVID
LRLCNWVSRADQGPKTIEQIHKEAKIEEQEQRKVQQLMTEKRRPGVQRVDEGGWNTVQGAKNRSVLD
PSKFLKITKPTIDEKIQLVPAQLGSGWGKSSGGAKASEDALRSSASSLNRFSPLQPPAPSGSPSATPL
EFDSRRALTSRSGMGREKSDKPIPAGTARPNTFLRGSSKDLLDNQSQEEQRREMLETVKQLTGGLDAERA
STEADRSKTRELAKSEMCAVPADKPALSEEEVERKSKSIIDEFLHINDFKEATQICEELSAQGPLHV FV
KVGVEFTLERSQITRDHMGHLLYQLVQSEKLSKQDFFKGFSETLELADDAIDIPHIWL YLAELVTPMLK
GGGISMRELIVEFSKPLL PVGRAGVLLSEILHLLCRQMSHKVGVGALWREADL SWKDFLPEGEDVHHFLL E
QKLDFTSESEGPCSSEALSKKELSAEELSQRLEKLEIMEEKADDERIFDWVETCSGCFLIACMTRR
  
```

TRTRPLEQKLISEEDLAANDILDYKDDDDKVV

Restriction Sites:
 Cloning Scheme:

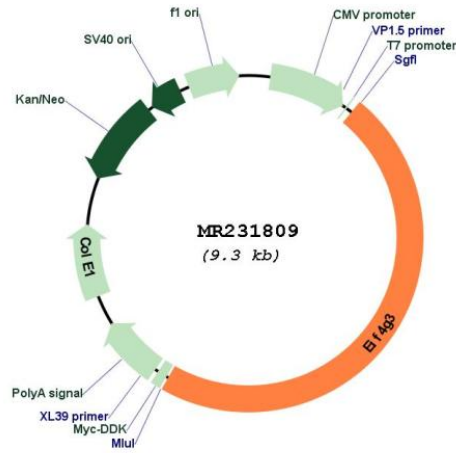
Sgfl-MluI

Cloning sites used for ORF Shuttling:



* The last codon before the Stop codon of the ORF

Plasmid Map:



ACCN: NM_001256198

ORF Size: 4392 bp

OTI Disclaimer: The molecular sequence of this clone aligns with the gene accession number as a point of reference only. However, individual transcript sequences of the same gene can differ through naturally occurring variations (e.g. polymorphisms), each with its own valid existence. This clone is substantially in agreement with the reference, but a complete review of all prevailing variants is recommended prior to use. [More info](#)

OTI Annotation: This clone was engineered to express the complete ORF with an expression tag. Expression varies depending on the nature of the gene.

Components: The ORF clone is ion-exchange column purified and shipped in a 2D barcoded Matrix tube containing 10ug of transfection-ready, dried plasmid DNA (reconstitute with 100 ul of water).

Reconstitution Method:

1. Centrifuge at 5,000xg for 5min.
2. Carefully open the tube and add 100ul of sterile water to dissolve the DNA.
3. Close the tube and incubate for 10 minutes at room temperature.
4. Briefly vortex the tube and then do a quick spin (less than 5000xg) to concentrate the liquid at the bottom.
5. Store the suspended plasmid at -20°C. The DNA is stable for at least one year from date of shipping when stored at -20°C.

RefSeq: [NM_001256198.1](#), [NP_001243127.1](#)

RefSeq Size: 6069 bp

RefSeq ORF: 4395 bp

Locus ID: 230861

Cytogenetics: 4 D3

MW: 162.3 kDa

Gene Summary: Probable component of the protein complex eIF4F, which is involved in the recognition of the mRNA cap, ATP-dependent unwinding of 5'-terminal secondary structure and recruitment of mRNA to the ribosome. Thought to be a functional homolog of EIF4G1 (By similarity).
[UniProtKB/Swiss-Prot Function]