

AGTATAAGCTGGGTCTCTCCGGAAGCCCCACCCTCGGCATCCAGATCATAGCCAGCTTCTCCAGGCACT
GTGTGCAGCTATGGCAGGACCCAACCTGCTCAAGAACATGGCCAGCTTCTCTGTGTCGAAACCTCTGAG
GGAGAGGAACCCCTTGCCCTTCAGCCCTCAATGGCAGCTTGCTTAGCCTTCTACCTTCAGACTCCCCTG
GAGTATACAATGAGGTGGTAGTGCCTGCCACTTACAGAGGTTTCCCTGACTGTGGCTCCATCAGCAACAA
GGCTGGAGCCCCACCCCTTCGCAGGGGCCGGGATGCTCCTCCCGCTTGTGGTGTGTGCTGGGAGCTGCC
CTGGAAATGTTTGCATCAGAGAGCAGCCCTGAACCCCTCAGCCTTCTCCAGCCCCAGGATATTGTATGTC
TGGGTGAAGCCCCACCTGCTGATCCAGGTGACCTTGACAGGTTCCCTTTTCCCTTTGAACCTCATCCT
CACTGGGGGAAGAATCCAGCATTTTCCCACTGATGGAGCAGACAGTCTAGAGGCCTGGATCAGTGCAGTG
GGCAAGTGGTTCTCCCGCTCAGCTGCCACCAGCTGCTGGGCCCTGGGTTGCTGCGGATGGTTCGCTGT
GGCTACGGTCCCCTCCACGCAGGCTGGCCCTGGTCTCTGGCTGTCGGGCTTCGCTCCTTCGTGG
TGATCATCTTCTGTGCCAGCGCTGGCCCTGGTCCCCTGCTCCGAGGACATGGTGCATTTACGA
CGTCTACAGGAGATCAGTGTGGTCTCGGCAGTGACACTCCAGACAAAAAGGAGCATTGGTCTTGTAG
AGACAGGAAGGACCTGTATTTGCAGGGGAAGGCAGGCTAGACTTTGCAGCGTGAACACGGCCATTGG
AGGTGCTCCGGAGGGGTGGCACGGCCCTGCAGGAGCAGCAGATGAGCCGGGAGACATCCCTATCATT
GTGGACGCTTGCATCAGTTTTGTACGCAGCATGGGCTCCGGCTGGAAGGTGTATATCGAAAGGAGGCG
CTCGAGCCCGCAGCCTGGGACTTTGGCTGAGTTAGGCGGGATGCCCGTCAAGTGAAGCTTAGACCACG
GGAACACTTTGTAGAAGATGTTACTGACACACTCAAACGTTCTTTTCGAGAGCTTGATGACCCCGTGACC
TCTGCTAGGTTGCTGCCTCGATGGAGAGAAGTGCAGAGCTTTCCAGAAGAATCAGCGCCTGGAGAAGT
ACAAAGAAGTGATTAGCTGCCTGCCTCGAGTCAACCGCAGAACACTGGCCACCCTCATCGGGCATCTGTA
CCGGGTGCAGAAGTGTGCGTCTCTAAACCAGATGTGCACGCGAACCTGGCCCTACTGTTTGACCTAGT
GTGTTCCAGACAGATGGCGGGGAGAGCATGAGGTTCCGGTACTGCAGGAGCTCATCGATGGCTACATCT
CTGTTTTGATATTGACTCGGACCAGGCAGCTCAGATTGACTTGGAGGTGAGTCTCATTACCACCTGGAA
GGATGTGCAAGTTGCTCCAGGCTGGAGACTCATCATGGAGTTTACATAGAACAGCAGCTCCCGGACAAC
TGTGTCAACCTAAAGGTATCCCCAACACTGACTGCTGAGGAGTTGACTAACAGGTGCTGGAGATGCGAG
GGCGGCATCGGGGACAGACTTGTGGGTGACATTTGAAATTTTGAACACGGAGAGCTTGAGAGGCCACT
GCACCCCAAAGAAAAGTTCTAGAGCAGGCCTGCAGTGGTGCCAGCTTCCAGAGCCCTGCTCAGCCTCT
CTGCTTCTGAGAAAAGTCTATAGGCACACGCTGGCTGCCTTTCACAGGAGTCCGGCGTGAGAGCCAC
GAGTGGGCTGCTACGGTGTGCTGAGGAGCCACCTCGATTGCTGGGAAACCGTTTCCAGGAGAGTTCTT
TTTGGTGCCTGGCCGATGCCTGCTGCTCAAGGAGAAGAAGAGCTCTAAGCCAGAACGGGAGTGGTCT
CTGGAAGGTGCCAAGTCTACCTGGGAATCCGCAAGAAGTTAAAACCTCCAACACTGTGGGTTTACAT
TAATATTGAAAAGATGCACCTGTCTGTCTGCTGATGGATGAGGAGGAGATGTGGGACTGGACCACAAG
CATCCTTAAAGCCAGCATGATGACCAACAGTCCGTGGTTTTACGTCGCGGTTCCCTCTGACCTTGCT
CGTCAGAAGTTTGGCACTATGCCCTTGCTGCCATCCGAGGGGATGACAGTGGAGCCACCCTTCTCTCTG
CCAATCAGACCCTGCGGCGACTACACAACCGGAGGACCTTATCCATGTTCTTTCCAATGAAGTACCCCCA
GGGATCTGTGGAAGAGCAAGATGAGCTGGAGGAGCCTGTGTATGAAGAGCCAGTATATGAGGAGGTGGG
GCCTTCCCTGAGCTTACCAAGGACACGACCTTCTCTTCCACATGGGAGTGGTCAGCCAAGTCAGATCCAT
CCCTTACCAGCCAGAGGTCTTTGATCAACCCCTCTCCAAGCAAGCATGTTGGGCCACGAAGAGAG
GATACCTGACCTCCTCCGGGCCCTTCAAAAAGCAGTTCTCAGGCACGAGGGTCCCTAGAGGAACAG
CTGCTTACAGAACTCAACAACCTCATCCTGAGGAAAGGAGAGCCTGCCTCGTCCAGAAAAGCTCTTCCC
AGCCCACAGTCCCCAAGCCCCAAGCCCCACCAGCCTTCCAACACCGACCCCAAGCTTACCCACCAACC
GCCTGCACTTCCAATCCACCCTCCAGCCAGCCTCTACA

ACGCGTACGCGGCGCTCGAGCAGAACTCATCTCAGAAGAGGATCTGGCAGCAAATGATATCCTGGATT
ACAAGGATGACGACGATAAGGTTTAA

Protein Sequence: >MR231807 representing NM_001205336
Red=Cloning site Green=Tags(s)

MEPTSPAPDAQPPKVPKPRVTFGLSNPATAQRPGLSPIFWDPEVSRNSECTQRSSPLLPSSEQPSVP
NTMEMPNAIYFGLDLRGRAQAADVTDPSSQATVPTPAFRPTTGTVHIMDPGCLYYGVQVPGIGASDR
RDGRGVCQERAHRQDLETREDAGYASLELPGDSILSLPTQDAETSDDLISPYASFSTADRVPVLLSGW
LDKLSPOGNVYFQRRFVQFNGRSLMYFGSDKDPFPKGVIPLTAIEMTRSSKDNKFVITGQRVFVFRTE
EAQRDLWCSTLQSCLEQRLLGHPRPPHPRPLRTGTLELRGHKAKVFAALIPGELALYKSEQAFSLGIG
ICFIELQGC SVRETKSRFDLLTPHRCSFTAESGGARQSWAAALQEAVTETLSDYEVAEKVWSNPNRHH
CADCRASRPDWAANLGVVICKQACQHRALGSGISKVQSLKLDTSVWSNEIVQLFIVLGNDRANCFWAG
ALPPGEGLHPDSAPGPRGEFISRKYKLGFRKPHPRHPDHSQQLQALCAAMAGPNLLKNMAQLLCVETSE
GEEPLSPSALNGSLLSLLPSPDPGVYNEVVVPATYRGLFCYSGISNKAGAPPLRRGRDAPPRLWCVLGAA
LEMFASESPEPLSLLQPQDIVCLGVSPPADPGDLDRFPFSFELILTGGRIQHFATDGADSL EAWISAV
GKWFSPLSCHQLLGPGLLRMGRWL RSPSHAGLAPGLWLSGFGLLRGDHFLCPAPGPGPPAPEDMVHLR
RLQEISVYSAADTPDKKEHLVLVETGRTL YLQEGRLDFAAWNTAIGGAAGGGTGLQEQQMSRGDPIII
VDACISFVTQHGLRLEGVYRKGGARARSLRLLAEFRRDARSVKLRPREHFVEDVTDTLKRFFRELD D PVT
SARLLPRWREAAELSQKNQRLEKYKEVISCLPRVNRRTLATLIGHLYRVQK CASLNQMCTRNALLFAPS
VFQTDGRGEHEVRVLQELIDGYISVFDIDSDQAAQIDLEVSLITTKWDVQLSQAGDLIMEVYIEQQLPDN
CVTLKVSPTLTAEELTNQVLEMGAASGTLWVTFEILEHGELE RPLHPKEKVL EQALQWCQLPEPCASAS
LLL RKVSMAHAGCLFTGVRRES PRVGLLR CREEPRLGNRFQERFFLVRGRCLLLLKEKKSSKPEREWS
LEGAKVYL GIRKCLKPPTLWGF T L ILEKMLCLSCMDEEEMWDWTT SILKAQHDDQSVVLRRRSSDLA
RQKFGTMPLLP IRGDDSGATLLSANQTLRRLHNRRTL SMFFPMKSPQGSVEEQDELEEPVYEEPVYEEVG
AFPELTKDTTFSSTWEWSAKSDPSLTSQRSFDQPPLSKASMLGHEERIPDPPPGPPSKSSSQARGSL EEQ
LLQELNNLILRKGEPA SCP ESSSQPTSPQAPSPTSLPTPTPSLPTQP PCTSNPPSSQPLT

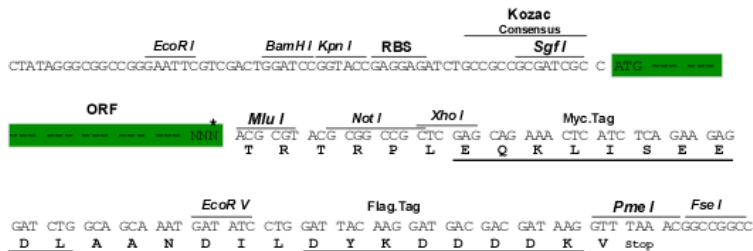
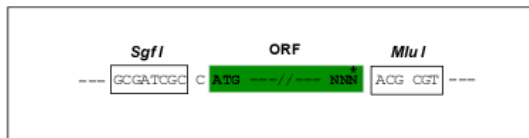
TRTRPLEQKLISEEDLAANDILDYKDDDDK V

Restriction Sites:

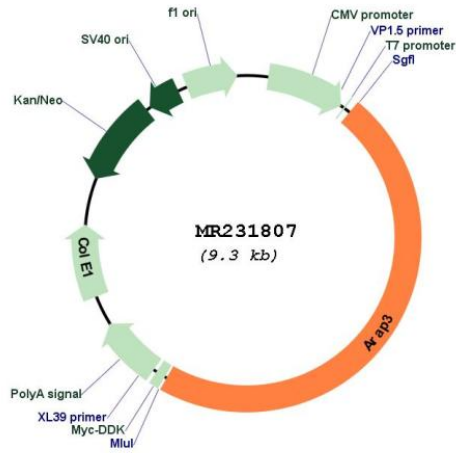
Sgfl-MluI

Cloning Scheme:

Cloning sites used for ORF Shuttling:



Plasmid Map:



ACCN: NM_001205336

ORF Size: 4380 bp

OTI Disclaimer: The molecular sequence of this clone aligns with the gene accession number as a point of reference only. However, individual transcript sequences of the same gene can differ through naturally occurring variations (e.g. polymorphisms), each with its own valid existence. This clone is substantially in agreement with the reference, but a complete review of all prevailing variants is recommended prior to use. [More info](#)

OTI Annotation: This clone was engineered to express the complete ORF with an expression tag. Expression varies depending on the nature of the gene.

Components: The ORF clone is ion-exchange column purified and shipped in a 2D barcoded Matrix tube containing 10ug of transfection-ready, dried plasmid DNA (reconstitute with 100 ul of water).

Reconstitution Method:

1. Centrifuge at 5,000xg for 5min.
2. Carefully open the tube and add 100ul of sterile water to dissolve the DNA.
3. Close the tube and incubate for 10 minutes at room temperature.
4. Briefly vortex the tube and then do a quick spin (less than 5000xg) to concentrate the liquid at the bottom.
5. Store the suspended plasmid at -20°C. The DNA is stable for at least one year from date of shipping when stored at -20°C.

RefSeq: [NM_001205336.1](#), [NP_001192265.1](#)

RefSeq Size: 5425 bp

RefSeq ORF: 4383 bp

Locus ID: 106952

UniProt ID: [Q8R5G7](#)

Cytogenetics: 18 B3

MW: 161.6 kDa

Gene Summary: This gene encodes a phosphoinositide binding protein containing ARF-GAP, RHO-GAP, RAS-associating, and pleckstrin homology domains. The ARF-GAP and RHO-GAP domains cooperate in mediating rearrangements in the cell cytoskeleton and cell shape. It is a specific PtdIns(3,4,5)P3/PtdIns(3,4)P2-stimulated Arf6-GAP protein. Two transcript variants encoding different isoforms have been found for this gene. [provided by RefSeq, Sep 2015]