

Product datasheet for **MR231806**

Ptprt (NM_001291149) Mouse Tagged ORF Clone

Product data:

Product Type:	Expression Plasmids
Product Name:	Ptprt (NM_001291149) Mouse Tagged ORF Clone
Tag:	Myc-DDK
Symbol:	Ptprt
Synonyms:	mKIAA0283; mRPTPrho; R-PTP-T; RPTP-rfo; RPTP-rho; RPTPmam4; RPTPrho
Mammalian Cell Selection:	Neomycin
Vector:	pCMV6-Entry (PS100001)
E. coli Selection:	Kanamycin (25 ug/mL)
ORF Nucleotide Sequence:	>MR231806 representing NM_001291149 Red=Cloning site Blue=ORF Green=Tags(s)

TTTTGTAATACGACTCACTATAGGGCGGCCGGAATTCGTCGACTGGATCCGGTACCGAGGAGATCTGCC
GCC**CGATCGCC**

ATGGGGAGCCTTGGCGGGCTCGCCCTCTGCCTGCTCCGGCTCCTGCTCCTGGGGCTGCAGCGGCCCGCT
TGCCCGCGCCGGAGCGCAGAGCGCCGAGGTGGCTGTTCTTTTACGAACATTACAGCAACTGCGGGTA
TAGCGTGGCTCTGGGAACCAATGGGTTTACCTGGGAGCAGATTAACACATGGGAGAAGCCAATGCTGGAC
CCAGCTGTGCCACAGGGTCTTCATGATGGTGAACAGCTCTGGAAGGGCTTCAGGCCAGAAAGCCCATC
TTCTTCTGCCAACCTTGAAGGAGAATGACACTCACTGCATTGACTTCCATTACTACTTCTCCAGTCGAGA
TCGCTCCAGCCCGGAGCCTTGAATGTCTACGTGAAGGTGAATGGTGGACCCCAAGGGAACCTGTCTGG
AACGTATCTGGCGTCTGACTGAGGGCTGGGTGAAGGCAGAGCTTGCATCAGCACCTTCTGGCCTCATT
TCTATCAGGTGATATTTGAATCCGTCTCTTTGAAAGGTCACTCTGGTTACATCGCTGTGGACGAAGTTCCG
GGTCTTGGCTCATCCATGCAGAAAAGCACCTCATTCTCGGACTCCAAAACGTTGAGGTGAATGTGGGG
CAGAACGCCACGTTTTCAGTGCATTGCTGGTGGAAAGTGGTCCCAGCATGACAACTTTGGCTCCAGCAAT
GGAATGGCAGAGACACAGCCCTCATGGTCACCCGGTGGTCAACCACAGACGCTTCTCAGCCACAGTGAG
TGTGGCAGACACCTCTCAACGCAGTATCTCCAAGTATCGCTGCGTGATCCGCTCAGATGGTGGGTCTGGT
GTGTCCAACATGACAGAGCTGATTGTGAAAGAGCCTCCCACGCCATTGCTCCCCGGAACACTGCGCG
TGGGTGCCACCTACCTGTGGATTAACCAAATGCCAACTCCATTATTGGGGATGGCCCCATCATACTGAA
GGAGGTAGAATACCGCACAACCACAGGAACCTGGGCCGAGACCCACATCGTGGACTCTCCAACACTACAAG
CTCTGGCATCTGGACCCTGATGTGGAGTATGAGATCCGGGTGCTGCTCACACGACCAGGAGAGGGGGCA
CAGGACCACCAGGACCACCCTAACTACCAGGACCAAGTGTGCCGATCCCGTGATGGCCCGCAGAATGT
GGAGATTGTGGACATTCGGGCTCGGCAGCTGACCCTGCAGTGGGAACCTTTGGCTATGCAGTGACCCGC
TGCCACAGCTACAACCTCACAGTGCAGTACCAGTACGTGTTCAACCAGCAGCAGTATGAAGCTGAAGAGG
TGATCCAGACATTTCCACTATACCCTTCGGGGTCTACGGCCCTTCATGACCATCAGACTGCGGCTGCT
ACTGTCCAACCTGAGGGCCGGATGGAGAGTGGAGAGTGGTGGTACAGACAGAAGAGGATGTTCCAGGA



GCTGTTCTCTCGAGTCCATCCAAGGGGTCCTTTGAGGAGAAGATCTACATCCAGTGGAAACCTCCCA
ATGAGACCAATGGGGTCATCACACTCTATGAGATTAACAAGGCTGTGGGCTCACTGGATCCAAGTGC
TGACCTCTCCAGCCAGAGGGGAAAGGTGTTCAAACCTCCGGAATGAAACCCACCACCTCTTTGTTGGGCTG
TACCCTGGGACTACCTACTCTTTACCATCAAGGCCAGCACAGCCAAGGGCTTTGGACCCCCAGTCACTA
CTCGGATTGCCACCAAGATTTGAGTCCATCAATGCCTGAATATGACGCAGATACCCCACTCAATGAAAC
AGATAACAACCATCACGGTGATGCTCAAACCCGCCAGTCCAGGGGAGCCCCAGTCAGTGTTTACCAGCTG
TTGTCAAGGAGGAGCGACTCCAGAAGTCTCGGAGAGCAGCTGACATCATTGAGTGTCTCAGTACCTG
TGAGCTACCGGAACGCCTCCAACCTCGATTGCTACACTACTTTGCTGCTGAGCTGAAGCCCTCCAACCT
GCCTGTCAACCAGCCATTTACAGTGGGAGACAACAAGACCTACAATGGCTACTGGAACCCCTCCTCTCTCC
CCATTGAAGAGCTACAGCATCTACTTCCAGGCCCTCAGCAAAGCAAATGGAGAGACAAAAATCAACTGTG
TGCGTCTGGCTACAAAAGGTGCTTCCACTCAGAATTCTAACACTGTGGAGCCGGAGAAGCAGGTGACAA
CACGGTGAAGATGGTGGCGTGATTGCTGGCCTCCTCATGTTTCATCATCATTCTCCTGGGGGTGATGCTG
ACCATCAAAGGAGGAAGCTGGTAAGAAGCAGAAGGAGACCCAGAGTGGAGCCAGAGGGAGATGGGTC
CTGTGGCCTCGACTGACAAGCCTACCGCAAGCTCGGCACCAACCGCAATGATGAAGGCTTCTCCTCCAG
CTCTCAGGATGTTAATGGATTACAGATGGCAGCCGTGGGAGCTGTCTCAGCCTACCCTACCATTTCAG
ACTCATCCCTACCGGACTTGTGACCCTGTAGAGATGAGCTATCCCGGGACCAGTTCAGCCTGCCATCC
GGTGGCGGACCTGCTTCAACACATCACCCAGATGAAGAGAGGCCAGGGCTACGGGTTCAAGGAGGAATA
CGAGGCCCTTACCAGAAGGACAGACAGCTTCGTGGGACACAGCCAAAGGAAGATGAAAACCGCAATAAGAAT
CGATACGGAACATCATATCTTATGACCACTCTCGAGTAAGGCTGTTGGTGTGATGGAGACCCTCACT
CAGACTACATCAATGCCAACTACATTGACGGGTACCACCGACCCCGGCACTACATTGCAACCCAAGGTCC
AATGCAAGAGACGGTGAAGGACTTTTGGAGAATGATCTGGCAGGAAAACCTCTGCCAGCATCGTCATGGTC
ACAAAACCTTGTGGAAGTGGCAGGCACCCAGCGGAACACACTGTGGAACTGCCACGCTAGGCCGTAAAGT
CATCCCCGGAATGGTGAAGTGTGTCGATACTGGCCAGATGACACAGAGGTCTATGGAGACATTAAGT
CACCTAATAGAAAACAGAGCCCTGGCAGAATAGGTCATCCGCACCTTCACAGTCCAGAAGAAAGGCTAC
CATGAGATCCGGGAGCTCCGCCTTCTCACTTACCAGCTGGCCTGACCAGGTGTTCCCTGCTATGCCA
CTGGCCTTCTGGGCTTTGTCCGCCAGGTCAAGTTTCTCAATCCCCAGAAGCTGGGCCATAGTGGTCCA
TTGCAGTGCTGGAGCCGGGAGGACTGGCTGCTTATTGCGATTGACACCATGCTCGACATGGCTGAGAAT
GAAGGGTTGTGGACATCTTCAACTGTGTGCGTGAGCTCCGGGCACAGAGGTCAACCTGGTGCAGACAG
AGGAGCAGTACGTGTTTGTGCACGATGCCATCCTGGAAGCATGCCTCTGCGGCAATACTGCCATCCCAGT
GTGTGAGTTCGCTCTCTACTACAACATCAGCAGGCTGGACCCGCAGACCAACTCCAGCCAGATCAAA
GACGAGTTTCAGACACTCAACATTGTGACACCTCGAGTGGCCCTGAAGACTGCAGCATTGGGCTTTAC
CCCGGAACCATGATAAGAATCGGAGCATGGATGTCCTGCCTCTGGACCGCTGTCTACCCTTCTCATCTC
AGTAGATGGAGAGTCCAGCAACTACATCAATGCAGCACTGATGGATAGCCACAAGCAGCCTGCCGCCTT
GTGGTCACCCAGCATCCTTACCCAACACGGTGGCAGACTTCTGGAGGCTGGTGTGTTGATTATAATTGTT
CATCTGTGGTGTGCTGAACGAGATGGATACTGCTCAGCTCTGTATGCAGTACTGGCCTGAGAAGACCTC
CGGGTGTATGGTCCCATCCAGTGGAGTTTGTCTCTGCAGACATCGATGAGGACATCATCCACAGAATC
TTCCGGATCTGTAACATGGCTCGGCCACAGGATGGTTATCGTATTGTCCAGCACCTCCAGTACATCGGT
GGCCTGCATACCGGGACACGCCCCCTAAGCGCTCTCTGCTCAAAGTGGTCCGACGGCTGGAGAAATG
GCAGGAGCAATACGACGGAAGAGAGGGGGCAGCTGTGGTCCACTGCCTAAATGGGGGAGGGCCGAGTGG
ACCTTCTGTGCTATCTGCAGTGTGTGAGATGATCCAGCAGCAGAACATTATTGACGTGTTCCACATTG
TGAAAACCTCCGCAACAACAAGTCCAACATGGTGGAGACGCTGGAACAGTATAAATTTGTATATGAGGT
GGCACTGGAATATTTAAGCTCCTTT

ACGCGTACGCGGCCGCTCGAGCAGAAAACATCTCAGAAGAGGATCTGGCAGCAAATGATATCCTGGATT
ACAAGGATGACGACGATAAGGTTTAA

Protein Sequence: >MR231806 representing NM_001291149
 Red=Cloning site Green=Tags(s)

MGSLGGLALCLLRLLLLGLQRPPLPGAGAQAAGGCSFDEHYSNCGYSVALGTNGFTWEQINTWEKPMLD
 PAVPTGSFMMVNSSGRASGQKAHLLPTLKENDTHCIDFHYYFSSRRSSPGALNVVYKVNNGPQGNPVW
 NVSGVVTEGWVKAELAISTFWPHFYQVIFESVSLKGHGPGYIAVDEVRLAHPCKRAPHFLRLQNVEVNVG
 QNATFQCIAGGKWSQHDKLWLQQWNGRDTALMVTTRVNVHRRFSATVSVADTSQRSISKYRCVIRSDGGSG
 VSNYAELIVKEPPTPIAPPELLAVGATYLWIKPNANSIIIGDGPIILKEVEYRTTTGTWAETHIVDSPNYK
 LWHLDPPDVEYEIRVLLTRPGEAGTGGPPPLTTRTKCADPVHGPQNVIEVDIRARQLTLQWEPFGYAVTR
 CHSYNLTVQYQYVFNQQQYEAEEVIQTSSHYTLRGLRPFMTIRLRLLLLSNPEGRMESEELVVQTEEDVPG
 AVPLESIQGGPFEEKIYIQWKPPNETNGVITLYEINYKAVGSLDPSADLSSQRGKVFKLNRNETHHFLVGL
 YPGTTYSFTIKASTAKGFPPVTTRIA TKISAPSMPEYDADTPLNETDTTITVMLKPAQSRGAPVSVYQL
 VVKEERLQKSRRRAADIECFVSPVSYRNASNLDSLHYFAELKPSNLPVTQPFTVGDNKTNGYWNPLS
 PLKSYSIYFQALSKANGETKINCVRLATKGASTQNSNTVEPEKQVDNTVKMAGVIAGLLMFIILLGVML
 TIKRRRLAKKQKETQSGAQREMGPVASTDKPTAKLGTNRNDEGFSSSSQDVNGFTDGSRGELSQPTLTIQ
 THPYRTCDPVEMSYPRDQFQPAIRVADLLQHITQMKRGQYGFKEEYALPEGQTASWDTAKEDENRNKN
 RYGNIIISYDHSRVRLVLDGDPHSDYINANYIDGYHRPRHYIATQGMQETVKDFWRMIWQENSASIVMV
 TNLVEVGRHPAEHTVGTATLGRAASPGMVKCVRYWPDDEYVYGDIKVTLIETEPLAEYVIRTFTVQKKGY
 HEIRELRLFHFTSWPDHGVPCYATGLLGFVRQVKFLNPPEAGPIVVHCSAGAGRTGCFIAIDTMDMAEN
 EGVVDIFNCVRELRAQRVNLVQTEEQYVFVHDAILEACLGNATAIPVCEFRSLYYNISRLDPQTSSQIK
 DEFQTLNIVTPRVRPEDCSIGLLPRNHDKNRSMDVLPDRCLPFLISVDGESSNYINAALMDSHKQPAAF
 VVTQHPLPNTVADFWRLVFDYNCSSVMLNEMDTAQLCMQYWPEKTS GCYGP IQVEFVSADIDEDIHRI
 FRICNMARPQDGYRIVQHLQYIGWPAYRDTPPSKRSLKVVRRLEKWQEYDQDREGRTVVHCLNGGGRSG
 TFCACISVCEMIQQNIIDVFHIVKTLRNNKSNMVETLEQYKFVVEVALEYLSSF

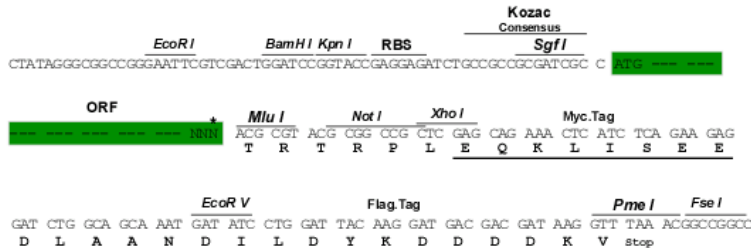
TRTRPLEQKLISEEDLAANDILDYKDDDDKV

Restriction Sites:

Sgfl-MluI

Cloning Scheme:

Cloning sites used for ORF Shuttling:



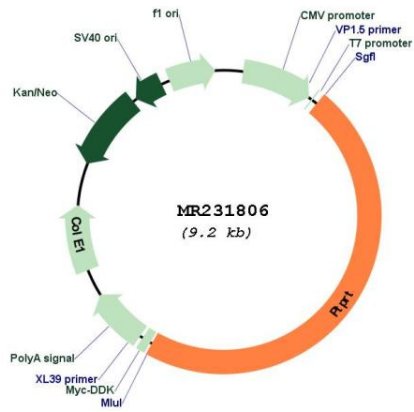
* The last codon before the Stop codon of the ORF

ACCN: NM_001291149

ORF Size: 4365 bp

OTI Disclaimer:	The molecular sequence of this clone aligns with the gene accession number as a point of reference only. However, individual transcript sequences of the same gene can differ through naturally occurring variations (e.g. polymorphisms), each with its own valid existence. This clone is substantially in agreement with the reference, but a complete review of all prevailing variants is recommended prior to use. More info
OTI Annotation:	This clone was engineered to express the complete ORF with an expression tag. Expression varies depending on the nature of the gene.
Components:	The ORF clone is ion-exchange column purified and shipped in a 2D barcoded Matrix tube containing 10ug of transfection-ready, dried plasmid DNA (reconstitute with 100 ul of water).
Reconstitution Method:	<ol style="list-style-type: none"> 1. Centrifuge at 5,000xg for 5min. 2. Carefully open the tube and add 100ul of sterile water to dissolve the DNA. 3. Close the tube and incubate for 10 minutes at room temperature. 4. Briefly vortex the tube and then do a quick spin (less than 5000xg) to concentrate the liquid at the bottom. 5. Store the suspended plasmid at -20°C. The DNA is stable for at least one year from date of shipping when stored at -20°C.
RefSeq:	NM_001291149.1 , NP_001278078.1
RefSeq Size:	12159 bp
RefSeq ORF:	4368 bp
Locus ID:	19281
UniProt ID:	Q99M80
Cytogenetics:	2 81.91 cM
MW:	163.6 kDa
Gene Summary:	May be involved in both signal transduction and cellular adhesion in the CNS. May have specific signaling roles in the tyrosine phosphorylation/dephosphorylation pathway in the anterior compartment of the adult cerebellar cortex.[UniProtKB/Swiss-Prot Function]

Product images:



Circular map for MR231806