

Product datasheet for MR231804

Ptprt (NM_001291150) Mouse Tagged ORF Clone

Product data:

Product Type:	Expression Plasmids
Product Name:	Ptprt (NM_001291150) Mouse Tagged ORF Clone
Tag:	Myc-DDK
Symbol:	Ptprt
Synonyms:	mKIAA0283; mRPTPrho; R-PTP-T; RPTP-rfo; RPTP-rho; RPTPmam4; RPTPrho
Mammalian Cell Selection:	Neomycin
Vector:	pCMV6-Entry (PS100001)
E. coli Selection:	Kanamycin (25 ug/mL)
ORF Nucleotide Sequence:	>MR231804 representing NM_001291150 Red=Cloning site Blue=ORF Green=Tags(s)

TTTTGTAATACGACTCACTATAGGGCGGCCGGAATTCGTCGACTGGATCCGGTACCGAGGAGATCTGCC
GCC**CGATCGCC**

ATGGGGAGCCTTGGCGGGCTCGCCCTCTGCCTGCTCCGGCTCCTGCTCCTGGGGCTGCAGCGGCCCGCT
TGCCCGCGCGGAGCGCAGAGCGCCGAGGTGGCTGTTCTTTTACGAACATTACAGCAACTGCGGGTA
TAGCGTGGCTCTGGGAACCAATGGGTTTACCTGGGAGCAGATTAACACATGGGAGAAGCCAATGCTGGAC
CCAGCTGTGCCACAGGGTCTTCATGATGGTGAACAGCTCTGGAAGGGCTTCAGGCCAGAAAGCCCATC
TTCTTCTGCCAACCTTGAAGGAGAATGACACTCACTGCATTGACTTCCATTACTACTTCTCCAGTCGAGA
TCGCTCCAGCCCGGAGCCTTGAATGTCTACGTGAAGGTGAATGGTGGACCCCAAGGGAACCTGTCTGG
AACGTATCTGGCGTCTGCTCACTGAGGGCTGGGTGAAGGCAGAGCTTGCCATCAGCACCTTCTGGCCTCATT
TCTATCAGGTGATATTTGAATCCGTCTCTTTGAAAGGTCACTCTGGTTACATCGCTGTGGACGAAGTTCCG
GGTCTTGGCTCATCCATGCAGAAAAGCACCTCATTTCTGCGACTCCAAAACGTTGAGGTGAATGTGGGG
CAGAACGCCACGTTTTCAGTGCATTGCTGGTGGAAAGTGGTCCCAGCATGACAACTTTGGCTCCAGCAAT
GGAATGGCAGAGACACAGCCCTCATGGTCACCCGGTGGTCAACCACAGACGCTTCTCAGCCACAGTGAG
TGTGGCAGACACCTCTCAACGCAGTATCTCCAAGTATCGCTGCGTGATCCGCTCAGATGGTGGGTCTGGT
GTGTCCAACATGCAGAGCTGATTGTGAAAGAGCCTCCCACGCCATTGCTCCCCGGAACACTACTGGCCG
TGGGTGCCACCTACCTGTGGATTAACCAAATGCCAACTCCATTATTGGGGATGGCCCATCATACTGAA
GGAGGTAGAATACCGCACAACCACAGGAACCTGGGCCGAGACCCACATCGTGGACTCTCCAACACTACAAG
CTCTGGCATCTGGACCCTGATGTGGAGTATGAGATCCGGGTGCTGCTCACACGACCAGGAGAGGGGGCA
CAGGACCACCAGGACCACCCTAACTACCAGGACCAAGTGTGCCGATCCCGTGATGGCCCGCAGAATGT
GGAGATTGTGGACATTCGGGCTCGGCAGCTGACCCTGCAGTGGGAACCTTTGGCTATGCAGTGACCCGC
TGCCACAGCTACAACCTCACAGTGCAGTACCAGTACGTGTTCAACCAGCAGCAGTATGAAGCTGAAGAGG
TGATCCAGACATTTCCACTATACCCTTCGGGGTCTACGGCCCTTCATGACCATCAGACTGCGGCTGCT
ACTGTCCAACCTGAGGGCCGGATGGAGAGTGGAGAGTGGTGGTACAGACAGAAGAGGATGTTCCAGGA



[View online »](#)

GCTGTTCTCTCGAGTCCATCCAAGGGGTCCTTTGAGGAGAAGATCTACATCCAGTGGAAACCTCCCA
ATGAGACCAATGGGGTCATCACACTCTATGAGATTAACAAGGCTGTGGGCTCACTGGATCCAAGTGC
TGACCTCTCCAGCCAGAGGGGAAAGGTGTTCAAACCTCCGGAATGAAACCCACCACCTCTTTGTTGGTCTG
TACCCTGGGACTACCTACTCTTTACCATCAAGGCCAGCACAGCCAAGGGCTTTGGACCCCCAGTCACTA
CTCGGATTGCCACCAAGATTTAGCTCCATCAATGCCTGAATATGACGCAGATACCCCACTCAATGAAAC
AGATAACAACATCACGGTGATGCTCAAACCCGCCAGTCCAGGGGAGCCCCAGTCAGTGTTTACCAGCTG
GTTGTCAAGGAGGACGACTCCAGAAGTCTCGGAGAGCAGCTGACATCATTGAGTGTTCCTCAGTACCTG
TGAGCTACCGGAACGCCTCCAACCTCGATTTCGCTACACTACTTTGCTGCTGAGCTGAAGCCCTCCAACCT
GCCTGTACCCAGCCATTTACAGTGGGAGACAACAAGACCTACAATGGCTACTGGAACCCCTCCTCTCTCC
CCATTGAAGAGCTACAGCATCTACTTCCAGGCCCTCAGCAAAGCAAATGGAGAGACAAAAATCAACTGTG
TGCGTCTGGTACAAAAGGTGCTTCCACTCAGAATTCTAACACTGTGGAGCCGGAGAAGCAGGTCGACAA
CACGGTGAAGATGGTGGCGTATTGCTGGCCTCCTCATGTTTCATCATCATTCTCCTGGGGGTGATGCTG
ACCATCAAAGGAGAAGAAATGCTTATTCGACTCCTATTACTTGAAGCTGGCTAAGAAGCAGAAGGAGA
CCCAGAGTGGAGCCAGAGGGAGATGGTCTGTGGCCTCGACTGACAAGCCTACCGCAAGCTCGGCAC
CAACCGCAATGATGAAGGCTTCTCCTCCAGCTCTCAGGATGTTAATGGATTACAGATGGCAGCCGTGGG
GAGCTGTCTCAGCTACCTCACCATTAGACTCATCCCTACCGACTTGTGACCCTGTAGAGATGAGCT
ATCCCCGGGACCAGTTCAGCCTGCCATCCGGGTGGCGGACCTGCTTCAACACATCACCCAGATGAAGAG
AGGCCAGGGCTACGGGTTCAAGGAGGAATACGAGGCCCTACCAGAAGGACAGACAGCTTCGTGGGACACA
GCCAAGGAAGATGAAAACCGCAATAAGAATCGATACGGAACATCATATCTTATGACCACTCTCGAGTAA
GGCTGTTGGTGTGGATGGAGACCCTCACTCAGACTACATCAATGCCAATACATTGACGGGTACCACCG
ACCCCGGCACTACATTGCAACCAAGGTCCAATGCAAGAGACGGTGAAGGACTTTTGGAGAATGATCTGG
CAGGAAAACTCTGCCAGCATCGTCATGGTCACAAACCTTGTGGAAGTGGGAGGGTGAAGTGTGTCCGAT
ACTGGCCAGATGACACAGAGGTCTATGGAGACATTAAGTACCCTAATAGAAACAGAGCCCTGCCAGA
ATACGTATCCGCACCTTACAGTCCAGAAGAAAGGCTACCATGAGATCCGGGAGCTCCGCCTCTTCCAC
TTCACCAGCTGGCCTGACCACGGTGTTCCTGCTATGCCACTGGCCTTCTGGGCTTTGTCCGCCAGGTCA
AGTTTCTCAATCCCCAGAAGCTGGGCCATAGTGGTCCATTGCAGTGTGGAGCCGGGAGGACTGGCTG
CTTCATTGCGATTGACACCATGCTCGACATGGCTGAGAATGAAGGGGTTGTGGACATCTTCAACTGTGTG
CGTGAGCTCCGGGCACAGAGGGTCAACCTGGTGCAGACAGAGGAGCAGTACGTGTTTGTGCACGATGCCA
TCCTGGAAGCATGCCTCTGCGGCAATACTGCCATCCCAGTGTGTGAGTTCGGCTCTCTACTACAACAT
CAGCAGGCTGGACCCGACAGCAACTCCAGCCAGATCAAAGACGAGTTTCAGACACTCAACATTGTGACA
CCTCGAGTGGCCTGAAGACTGCAGCATTGGGCTTTACCCCGAACCATGATAAGAATCGGAGCATGG
ATGTCCTGCCTCTGGACCCTGTCTACCTTCTCATCTCAGTAGATGGAGAGTCCAGCAACTACATCAA
TGACGACTGATGGATAGCCACAAGCAGCTGCCGCTTCGTGGTCACCCAGCATCCTCTACCCAACACG
GTGGCAGACTTCTGGAGGCTGGTGTGTTGATTATAATTGTTTCATCTGTGGTGTGTAACGAGATGGATA
CTGCTCAGCTCTGTATGCAGTACTGGCCTGAGAAGACCTCCGGGTGTTATGGTCCATCCAGGTGGAGTT
TGTCTCTGCAGACATCGATGAGGACATCATCCACAGAATCTTCCGGATCTGTAACATGGCTCGGCCACAG
GATGGTTATCGTATTGTCCAGCACCTCCAGTACATCGGCTGGCCTGCATACCGGGACACGCCCCCTCTA
AGCGCTCTCTGCTCAAAGTGGTCCGACGGCTGGAGAAATGGCAGGAGCAATACGACGGAAGAGAGGGGCG
CACTGTGGTCCACTGCCTAAATGGGGGAGGCCAGTGGAACTTCTGTGCTATCTGCAGTGTGTGTGAG
ATGATCCAGCAGCAGAACATTATTGACGTGTTCCACATTGTGAAAACCTCCGCAACAACAGTCCAACA
TGTTGGAGACGCTGGAACAGTATAAATTTGTATATGAGGTGGCACTGGAATATTTAAGCTCCTTT

ACGCGTACGCGGCCGCTCGAGCAGAACTCATCTCAGAAGAGGATCTGGCAGCAATGATATCCTGGATT
ACAAGGATGACGACGATAAGGTTTAA

Protein Sequence: >MR231804 representing NM_001291150
 Red=Cloning site Green=Tags(s)

MGSLGGLALCLLRLLLLGLQRPPLPGAGAQAAGGCSFDEHYSNCGYSVALGTNGFTWEQINTWEKPMLD
 PAVPTGSFMMVNSSGRASGQKAHLLPTLKENDTHCIDFHYYFSSRRSSPGALNVVYKVNNGPQGNPVW
 NVSGVVTEGWVKAELAISTFWPHFYQVIFESVSLKGHPGYIAVDEVRLAHPCKRAPHFLRLQNVENVVG
 QNATFQCIAGGKWSQHDKLWLQQWNGRDALMVTTRVVNHRRF SATVSVADTSQRSISKYRCVIRSDGSG
 VSNYAELIVKEPPTPIAPPELLAVGATYLWIKPNANSIIIGDGPIILKEVEYRTTGTWAETHIVDSPNYK
 LWHLDPDVEYEIRVLLTRPGEAGTGGPPPLTTRTKCADPVHGPQNVIEVDIRARQLTLQWEPFGYAVTR
 CHSYNLTVQYQYVFNQQQYEAEEVIQTSSHYTLRGLRPFMTIRLRLLLSNPEGRMESEELVVQTEEDVPG
 AVPLESIQGGPFEEKIYIQWKPPNETNGVITLYEINYKAVGSLDPSADLSSQRGKVFKLNRNETHHLFVGL
 YPGTTYSFTIKASTAKGFPPVTTRIATKISAPSMPEYDADTPLNETDTTITVMLKPAQSRGAPVSVYQL
 VVKEERLQKSRRRAADIECFVSPVSYRNASNLDSLHYFAELKPSNLPVTQPFTVGDNKTNGYWNPLS
 PLKSYSIYFQALSKANGETKINCVRLATKGASTQNSNTVEPEKQVDNTVKMAGVIAGLLMFIILLGVML
 TIKRRRNAYSYSYLLKAKKQKETQSGAQREMGPVASTDKPTAKLGTNRNDEGFSSSSQDVNGFTDGSRG
 ELSQPTLTIQTHPYRTCDPVEMSYPRDQFQPAIRVADLLQHITQMKRGQGYGFKEEYEALPEGQTASWDT
 AKEDENRNKNRYGNIISYDHSRVRLVLDGDPHSDYINANYIDGYHRPRHIATQGPMQETVKDFWRMIW
 QENSASIVMVTNLVEVGRVKCVRYWPDDEYVGDIKVTLIETEPLAEYVIRTFTVQKKGYHEIRELRLFH
 FTSPWDHGVPCYATGLLGFVRQVKFLNPPEAGPIVVHCSAGAGRTGCFIAIDTMLDMAENEGVVDIFNCV
 RELRAQRVNLVQTEEQYVFVHDAILEACLGNATAIPVCEFRSLYNI SRLDPQTNSSQIKDEFQTLNIVT
 PRVRPEDCSIGLLPRNHDKNRSMDVLPDRCLPFLISVDGESSNYINAALMDSHKQPAAFVVTQHPLPNT
 VADFWRLVFDYNCSSVMLNEMDTAQLCMQYWEKTSKCYGPIQVEFVSADIDEDIHRIFRICNMAPRQ
 DGYRIVQHLQYIGWPAYRDTPPSKRSLKVVRRLEKWQEQYDREGRTVVHCLNGGGRSGTFC AICSVCE
 MIQQQNIIDVFHIVKTLRNNKSNMVETLEQYKFVVEVALEYLSSF

TRTRPLEQKLISEEDLAANDILDYKDDDDKV

Restriction Sites:

Sgfl-MluI

Cloning Scheme:

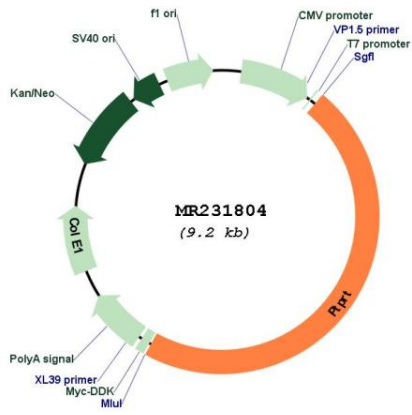


ACCN: NM_001291150

ORF Size: 4335 bp

OTI Disclaimer:	The molecular sequence of this clone aligns with the gene accession number as a point of reference only. However, individual transcript sequences of the same gene can differ through naturally occurring variations (e.g. polymorphisms), each with its own valid existence. This clone is substantially in agreement with the reference, but a complete review of all prevailing variants is recommended prior to use. More info
OTI Annotation:	This clone was engineered to express the complete ORF with an expression tag. Expression varies depending on the nature of the gene.
Components:	The ORF clone is ion-exchange column purified and shipped in a 2D barcoded Matrix tube containing 10ug of transfection-ready, dried plasmid DNA (reconstitute with 100 ul of water).
Reconstitution Method:	<ol style="list-style-type: none"> 1. Centrifuge at 5,000xg for 5min. 2. Carefully open the tube and add 100ul of sterile water to dissolve the DNA. 3. Close the tube and incubate for 10 minutes at room temperature. 4. Briefly vortex the tube and then do a quick spin (less than 5000xg) to concentrate the liquid at the bottom. 5. Store the suspended plasmid at -20°C. The DNA is stable for at least one year from date of shipping when stored at -20°C.
RefSeq:	NM_001291150.1 , NP_001278079.1
RefSeq Size:	12129 bp
RefSeq ORF:	4338 bp
Locus ID:	19281
UniProt ID:	Q99M80
Cytogenetics:	2 81.91 cM
MW:	162.9 kDa
Gene Summary:	May be involved in both signal transduction and cellular adhesion in the CNS. May have specific signaling roles in the tyrosine phosphorylation/dephosphorylation pathway in the anterior compartment of the adult cerebellar cortex.[UniProtKB/Swiss-Prot Function]

Product images:



Circular map for MR231804