

Product datasheet for MR231801

Dapk1 (NM_029653) Mouse Tagged ORF Clone

Product data:

Product Type:	Expression Plasmids
Product Name:	Dapk1 (NM_029653) Mouse Tagged ORF Clone
Tag:	Myc-DDK
Symbol:	Dapk1
Synonyms:	D13Ucla1; DAP-Kinase
Vector:	pCMV6-Entry (PS100001)
E. coli Selection:	Kanamycin (25 ug/mL)
Cell Selection:	Neomycin
ORF Nucleotide Sequence:	>MR231801 representing NM_029653 Red=Cloning site Blue=ORF Green=Tags(s)

TTTTGTAATACGACTCACTATAGGGCGGCCGGAATTCGTCGACTGGATCCGGTACCGAGGAGATCTGCC
GCCGCGATCGCC

ATGACTGTGTTTCAGGCAGGAAAACGTGGACGACTACTACGACACCGGCGAGGAAGTGGCAGTGGACAGT
TCGCAGTTGTGAAGAAATGTCGTGAGAAAAGTACCGGTCTTCAGTATGCGGCCAAGTTCATCAAGAAAAG
GAGGACCAAGTCCAGCCGGCGGGCGGTGAGCCGGGAGGACATCGAGCGGGAGGTCAGCATCTGAAGGAG
ATCCGGCACCCAAATGTCATCACCTGCATGAGGTCTATGAGAACAAGACAGATGTCATTCTGATCCTGG
AGCTTGTGTCAGGAGGTGAGCTGTTGACTTCTGGCTGAGAAGGAATCTCTGACTGAAGAGGAGGCAAC
GGAATTCCTTAAGCAGATTCTCAGCGGCCTTTACTACCTGCACTCACTGCAGATCGCTCACTTTGACCTG
AAGCCGAAAACATAATGCTTCTGGATAGAAAATGTGCCAAACCTCGGATCAAGATCATAGACTTTGGCT
TGGCCATAAAATTGACTTTGAAATGAATTCAAAACATATTTGGGACACCAGAGTTTGTGGCTCCGGA
GATAGTCAACTATGAGCCCTGGGTCTTGAGGCAGATATGTGGAGCATCGGGTAATAACCTATATCCTC
CTAAGTGGGGCTCCCTTTTCTTGAGACACCAAGCAAGAAACATTAGCGAATGTGCCGCTGTCAACT
ACGACTTTGAGGAGGAATCTCCGGAACACCAAGTACCCTTGCCAAAGATTTTCATCAGAAGACTGCTGGT
CAAGGATCCAAAGAAGAGGATGACAATCCAGGACAGTTTGCAGCACCCCTGGATCAAGCCTAAAGACACC
CAACAAGCACTTAGTCGAAAAGCCTCAGCAGTAAACATGGAGAAAATCAAGAAGTTTGCAGCTCGGAAAA
AATGGAACAATCTGTTGCTTGTATCACTGTGCCAAAGATTATCCAGGTCAATTTTGTCCAGAAGTAA
CATGAGTGTGCCAGGAGTATGATACTCTGGATGAGGAAGACTCCTTTGTGATGAAAGCCATCATCCAT
GCCATCAATGATGACAACGTACCCGGCTGCAGCATCTCCTGGGCTCCTGTCCAGCTATGACGTCAACC
AGCCCAACAAGCATGGGACACCTCCATTACTGATTGCCGAGGCTGTGGCAACATCCAGATGTTACAGTT
ACTCATAAAACGAGGCTCAAGGATTGACGTCCAGGATAAGGGAGGATCCAATGCCATCTACTGGGCTCT
CGGCATGGCCATGTGGATACTTTGAAATTTCTCAATGAGAACAAATGCCCTTTGGATGTTAAAGACAAGT
CTGGAGAGACAGCTCTTACGTGGCAGCCGCTATGGCCATGCAGATGTGGTTCAACTACTGTGCAGTTT
TGCTCTAATCCTGATTTCCAGGACAAGGAAGAGGAAACCCCTGCAGTGTGCTGCCTGGCATGGCTAT
TACTCCGTGGCTAAAGCTCTTTGTGAAGTTGGCTGCAACGTGAATATCAAGAATCGGGAGGGAGAGACCC



[View online »](#)

CATTGCTGACGGCGTCTGCCAGGGGCTATCATGACATTGTGGAGTGTCTGGCTGAACATGGAGCTGACT
GAATGCTTCTGACAAGGATGGACACATCGCTCTTCATCTTGTGTGAGGCGTTGTGAGATGGAAGTCATC
AAGACCTCCTTGGCCATGGGTCCTTTGTGGATTTCCAGGACAGGCATGGCAACACACCCCTGCACGTGG
CCTGCAAAGATGGAAGCGCACCTATCGTGGTGGCCCTCTGTGAAGCCAGCTGCAATCTGGACATCTCAA
CAAGTATGGTCCGACTCCTCTCCACCTTGACGCAACAACGGGATCCTAGATGTGGTCCGCTACCTCTGT
TTGATGGGCGCCAATGTGGAGGCTCTAACCTCGGATGGAAGACGGCCGAGGACCTCGCCAAAGGCAGAAC
AGCACGACATGTGGCAGGGCTCCTGGCAAGACTGCGGAAGGACACACACCCGAGGACTCTTCATCCAGCA
ACTCCGACCCACCCAGAATCTCCAGCCAGAATCAAGCTCAAACCTGTTTGGCCATTCCGGATCAGGGAAA
TCCACCTGCTGGAATCTCTCAAGTGTGGGCTGTTAAGGAGTTTCTTCAGAAGGCCGCCGCCCAGACTAT
CCTCTACCAACTCCACCCGCTTCCACCCGTACCCCTGGCTGCTAAGCCAACAGTCTCAGTGAGCATTAA
CAACCTGTACCCCGCTGTGAGAACGTGAGCGTAAGGAGCCGAGCATGATGTTGAGCCGGGCTCACC
AAAGGGATGCTGGAAGTGTTCGTGGCTCCGTCTCACCACCTCCACTGCTCGACTGATGACCAGTCCACCA
AAGCCATCGACATCCAGAATGCTTATTTGAACGGAGTTGGTGATTTTCAGTGTGTTGGGAGTTCTCTGGAAA
CCCTGTGTAATCTGTTGCTATGACTACTTTGCTGCCAACGACCCACGTCATCCACATCATCGTTTTTC
AGTCTCGAAGAACCCTATGAGATCCAGTGAACCAAGTATTTTCTGGCTCAGTTTCTGAAGTCTCTGG
TCCAGTTGAAGAACCCTATAGCATTGGAGGCAAGCTGAAGAACCCTCTCCGAGTTGTCCTGGTGGCAAC
ACATGCTGACATCATGAACATCCCTCGGCTGCTGGAGGCGAGTTGGATATGACAAGGATACATCCTTG
CTGAAAGAGATCAGAAACAGGTTCCGGAATGACCTTCAATGCTCAAAACAGCTGTTTGTCTGGATGCGAG
GAGCGTCTGGGTCTAAGGACATTAAGGTTCTTCGGAATCACCTGCAAGAAATACGGAGCCAGATTGTCTC
GGGGTGTTCGCCATGACTCACCTGTGCGAGAAGATCATCTCCACGCTGCCCTCTGGCGGAAGCTCAAC
GGGCCAAACCAGTGTGTCGCTGCAGCAGTTTGTGTATGACGTGCAGGACCAGCTGAACCCCTGGCCT
CTGAGGATGACCTCAGGCGCATTGCACAACAGCTACACAGCACGGGCGAGATAAACATCATGCAGAGTGA
GACAGTGCAGGACGTGTTACTGCTGGATCCTCGATGGCTCTGCACCAACGCTCTGGGGAAGCTGCTGTCT
GTGGAGACGCCCGAGCCCTGCACCATTACCGGGCCGCTACACCATGGAAGACATCCAGCGTCTGGTCC
CAGACAGTGCAGTGGAGGAGCTGCTGCAGATACTGGATGCCATGGACATCTGCGCCCGAGACCTGAGTAG
TGGGACTATGGTGGATATCCCTGCTGATCAAAAACAGACAGCCTGCAGCGCTCTGGGCGGATGAGGAG
GATGAGGTGATGGTGTACGGTGGGGTGCGCATTGTCCCTGTAGAGCACCTCACCCCTTCCCCTGTGGCA
TCTTTCACAAAGTTCAGGTCAACCTGTGCCGATGGATCCACCAGCAAAGCGGGAGGGTGTGCGGACAT
CCGTCTGTGGGTGAGCGGCTGCAGGATCGCAACCGGGGCTGAGTTGCTGGTGTCTGGTCAATCAC
GGTCAGGGCATCGAGGTACAGGTGCGTGGCCTGGAGACGGAGAAGATTAAGTGTGCTGCTGCTGGACT
CGGTGTGCAGCACCATCGAGACCGTATGGCCACCACCTTGCCAGGGTGTGACGGTGAAGCACTACCT
GAGCCCCCAGCAGCTAAGGGAGCACACGAACCGGTATGGTCTATCAGCCCCGGGACTTCTCCGTGCG
CAGACCCTGAAAGAGAGTTCCCTTACCAACACCATGGGTGGGTACAAGGAGAGCTTCAGCAGCATACGT
GCTTTGGGTGTCATGACGTCTACTCACAGGCCAGTCTTGGCATGGATATCCATGCGTCAGACCTGAGTCT
CCTGACCCGGAGGAAACTGAGTCGCTGCTTGACCCACCCGACCCATGGGGAAGGACTGGTGCCTTCTG
GCCATGAACCTGGGCCTCCCAGACATGGTGGCCAAACACAACGTCAACAACAGGGCTTCTAGGGATTTCC
TCCCTAGCCAGTGCATGCCTTGCTACAGGAATGGACCTCCTACCTGAGAGCACGGTGGGCATCCTTAT
ATCAAACCTTGGGAGCTGGGGCGCCGGATGCTGCGGACTTTTACTGAAGGCCTCCTGTGTTCAG
ATCAACCTTGATGGCAATGGCCAGGAGGCTATGCCTCAAGCTGTAAACAGTGGCAGCTCTACAATTCCA
TTAGCTCAGTGGTGTCCGG

ACGCGTACGCGGCCGCTCGAGCAGAAACTCATCTCAGAAGAGGATCTGGCAGCAAATGATATCCTGGATT
ACAAGGATGACGACGATAAGGTTTAA

Protein Sequence: >MR231801 representing NM_029653
 Red=Cloning site Green=Tags(s)

MTVFRQENVDDYYDTGEELGSGQFAVVKKCREKSTGLQYAAKFIKKRRTKSSRRGVSREDIEREVSILKE
 IRHPNVITLHEVYENKTDVILILELVAGGELDFLAEKESL TEEEA TEFLKQILSGVYYLHSLQIAHFDL
 KPENIMLLDRNVPKPRIKIIDFGLA HKIDFGNEFKNIFGTPEFVAPEIVNYEPLGLEADMWSIGVITYIL
 LSGASPFLGDTKQETLANVSAVNYDFEEFFRNTSTLAKDFIRRLLVKDPKCRMTIQDSLQHPWIKPKDT
 QQALSRKASAVNMEKFKKFAARKKWKQSVRLISLQRLSRSFLSRSNMSVARSDDTLDEEDSFVMKAIH
 AINDDNVPLQHLLGSLSSYDVNQPNKHGTPPLLIAAGCGNIQMLQLLIKRGSRIDVQDKGGSNAIYWAS
 RHGHVDTLKFLNENKCPLDVKDKSGETALHVAARYGHADVQLLCSFGSNPDFQDKEETPLHCAAWHGY
 YSAKALCEVGCNVNIKNREGETPLL TASARGYHDIVECLA EHGADLNASDKDGHIALHLAVRRCQMEVI
 KTL LGHGSFVDFQDRHGNTPLHVACKDGSAPIVVALCEASCNLDISNKYGRTPHLAANNGILDVVRVLC
 LMGANVEALTSDGKTAEDLAKAEQHEHVAGLLARLRKDTHRGLFIQQLRPTQNLQPRIKLLFGHSGSGK
 STLVESLKCGLLRSFFRRRRPRLSSTNSTRFPSPLAAPTVSVSINNL YPGCENVSRSRSMFEPGLT
 KGMLVVFVAPSHHLHCSTDDQSTKAIDIQNA YLNGVGFVWVEFSGNPVVFCCYDYFAANDPTSIIHIVF
 SLEEPYEQLNQVIFWLSFLKSLVPVEEPIAFGGKLNPLRVVLVATHADIMNIPRPAGGEFGYDKDTSL
 LKEIRNRFGNDLHVS NKLFVLDAGASGSKDIKVLRNHLQEIRSQIVSGCSPMTHLCEKIIISTLPSWRKLN
 GPNQLMSLQQFVYDVQDQLNPLASEDDLRRIAQQ LHSTGEINIMQSETVQDVLLLDPRWLCTNVLGKLLS
 VETPRALHHRGRYTMEDIQRLVPDSV EELLQILDAMDICARDLSSGTMVDIPALIKTDSLQRSWADEE
 DEVMYGGVRIVPVEHLTPFPCGIFHKVQVNLCRWIHQSAEGDADIRLVWVSGCRIANRGAELLVLLVNH
 GQGIEVQVRGLETEKIKCCLLLDSVCSTIETVMATTL PGLLTVKHVYLSPPQLREHHEPVMVYQPRDFRA
 QTLKESSTNTMGGYKESFSITCFGCHDVYSQASLGMDIHASDLSLLTRRKL SRLLDPPDPMGKDWCCLL
 AMNLGLPDMVAKHNVNRRASRDFLPSVHALLQEWTSYPESTVGILISKRELGRRAADFLLKASSVFK
 INLDGNGQEAYASSCNSGTSYNSISSVVS R

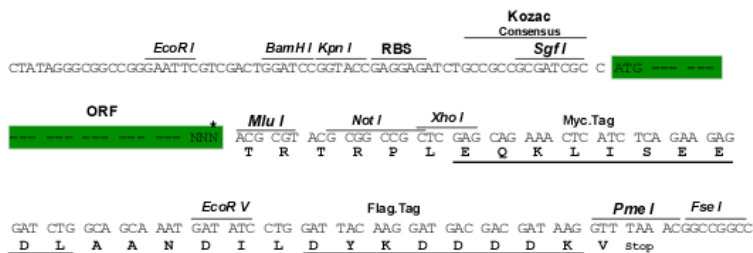
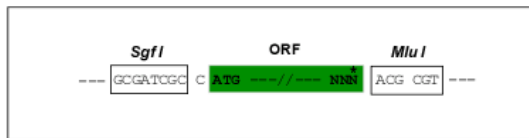
TRTRPLEQKLISEEDLAANDILDYKDDDDKV

Restriction Sites:

Sgfl-MluI

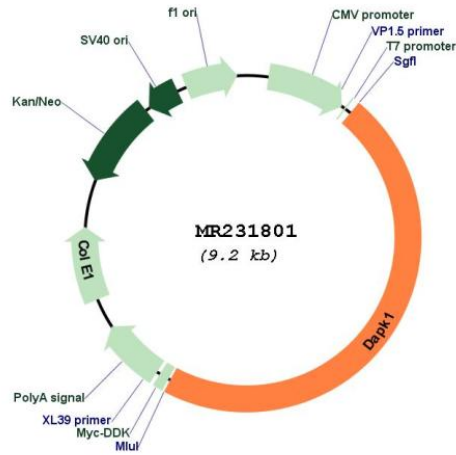
Cloning Scheme:

Cloning sites used for ORF Shuttling:



* The last codon before the Stop codon of the ORF

Plasmid Map:



ACCN: NM_029653

ORF Size: 4290 bp

OTI Disclaimer: The molecular sequence of this clone aligns with the gene accession number as a point of reference only. However, individual transcript sequences of the same gene can differ through naturally occurring variations (e.g. polymorphisms), each with its own valid existence. This clone is substantially in agreement with the reference, but a complete review of all prevailing variants is recommended prior to use. [More info](#)

OTI Annotation: This clone was engineered to express the complete ORF with an expression tag. Expression varies depending on the nature of the gene.

Components: The ORF clone is ion-exchange column purified and shipped in a 2D barcoded Matrix tube containing 10ug of transfection-ready, dried plasmid DNA (reconstitute with 100 ul of water).

Reconstitution Method:

1. Centrifuge at 5,000xg for 5min.
2. Carefully open the tube and add 100ul of sterile water to dissolve the DNA.
3. Close the tube and incubate for 10 minutes at room temperature.
4. Briefly vortex the tube and then do a quick spin (less than 5000xg) to concentrate the liquid at the bottom.
5. Store the suspended plasmid at -20°C. The DNA is stable for at least one year from date of shipping when stored at -20°C.

RefSeq: [NM_029653.3](#), [NP_083929.2](#)

RefSeq Size: 5891 bp

RefSeq ORF: 4293 bp

Locus ID: 69635

UniProt ID: [Q80YE7](#)

Cytogenetics: 13 32.53 cM

MW: 160.4 kDa

Gene Summary: Calcium/calmodulin-dependent serine/threonine kinase involved in multiple cellular signaling pathways that trigger cell survival, apoptosis, and autophagy. Regulates both type I apoptotic and type II autophagic cell deaths signal, depending on the cellular setting. The former is caspase-dependent, while the latter is caspase-independent and is characterized by the accumulation of autophagic vesicles. Phosphorylates PIN1 resulting in inhibition of its catalytic activity, nuclear localization, and cellular function. Phosphorylates TPM1, enhancing stress fiber formation in endothelial cells. Phosphorylates STX1A and significantly decreases its binding to STXBP1. Phosphorylates PRKD1 and regulates JNK signaling by binding and activating PRKD1 under oxidative stress. Phosphorylates BECN1, reducing its interaction with BCL2 and BCL2L1 and promoting the induction of autophagy. Phosphorylates TSC2, disrupting the TSC1-TSC2 complex and stimulating mTORC1 activity in a growth factor-dependent pathway. Phosphorylates RPS6, MYL9 and DAPK3 (By similarity). Acts as a signaling amplifier of NMDA receptors at extrasynaptic sites for mediating brain damage in stroke. Cerebral ischemia recruits DAPK1 into the NMDA receptor complex and it phosphorylates GRINB at Ser-1303 inducing injurious Ca(2+) influx through NMDA receptor channels, resulting in an irreversible neuronal death. Required together with DAPK3 for phosphorylation of RPL13A upon interferon-gamma activation which is causing RPL13A involvement in transcript-selective translation inhibition.[UniProtKB/Swiss-Prot Function]