

Product datasheet for MR231793

Palld (NM_001293772) Mouse Tagged ORF Clone

Product data:

Product Type:	Expression Plasmids
Product Name:	Palld (NM_001293772) Mouse Tagged ORF Clone
Tag:	Myc-DDK
Symbol:	Palld
Synonyms:	2410003B16Rik; 6030492A02
Vector:	pCMV6-Entry (PS100001)
E. coli Selection:	Kanamycin (25 ug/mL)
Cell Selection:	Neomycin
ORF Nucleotide Sequence:	>MR231793 representing NM_001293772 Red=Cloning site Blue=ORF Green=Tags(s)

TTTTGTAATACGACTCACTATAGGGCGGCCGGAATTCGTCGACTGGATCCGGTACCGAGGAGATCTGCC
GCCGCGATCGCC

ATGTCAGAGACTTCTCCACGACTCCTTCTATGACTCCTTATCAGACGTGCAGGAAGAGGGCAAAGTG
CTGACTTCTTTCCAGGCCTCTCTGCTTCTCAGCCAGGAAGAAATAAATAAAAGCCTTGACCTGGCAGC
CAGAGCTATAGACAGCTCTGAACTGAAGATTTTACTCTGAGAAGGAGATCTCGCAGATTTTCAGCAAG
TCTCCATAAGCCTCTGCGAAACTCCTTCCCATGAGGAGCCGAAATCAGGCAAGCAGACTTCTCAGAAC
GACCTCAGGATAGCAGGCGAGCACCTGTCCAGCCTCTAACAGGAGATCAAGCTGAAAGGATCACTTCCCC
AGGTTCAAAGAGAAAACCCGGGGTATCACCCCTGCTGGCCAGCCCCAGCTACATCCGGAGCCTCCGCAAG
GCTGAAAAACGAGGTGCAAAAAATCCCAATCCAAGTTCAAAGCCAAAAGTGCAGCAAGCAAGGCTG
GCCCCAGAGCCAAGTGTGCGACAAGGCGGCTAGTTTCATCGAGGAAGTACCTCCATATTTAGAGAAGC
GGCAAAGCCAAGGAACAGAAGCCCAATGGTGAGTCCATCACAGACAGTGGGTATCTGTCTCCTAAA
AATCAGCCATCAGCCCTGATGAGTGCCTCAGCCAGTCAAGCCCACTGCAGACCAGCTAGATCAACTGG
AGATGGACGAGAAGTCAAGCAAGCCAGGGCAGCCTTTGCTACCAGGCCACCAGGCCTCGGAAGAGAG
CTTGCCACTCGCTCACATCCCGACCCACAGCCCAAGAAAGCCGCACTTGCCAACTGCACCTAGGTTT
ATCCAGAAACTGAGGAGCCAAGAAGTTGCTGAAGGAAGCAGAGTTTATTTGGAGTGTAGAGTACAGGAA
ACCCAACGCCAGGGTCAGATGGTTCTGTGAGGGGAAGGAGCTGTACAACAGTCTGACGTTAGATCCA
CTGCGAGAGTGGGGAGCTGCACACCTTGGTCATTGCTGAGGCCTTTGAGGACGACACAGGTGCTACAGC
TGTCTGGTACAAACCCAGTGGCTCAGACAGCACATCTGCAGAGGTGTTTATTGAAGGAGCCAGTTCAA
CGGACTCTGACAGCGAAAGCTTATCTTTATATCAAAGCTGGAGCCATGCCACAAGCTCAGAAGAAAAC
AACGTCGGTTTCTTAAAGATAGGATCCTCAGCTCCGAAAACAGGAGTGACCACAGCTGTGATTCAGCCC
CTATCTGTGCCGTCCAACAGGCTCACAGCGCTACTTCATATCTCTGCCGACCTGACGGAACCCATGG
GCTGCCTTCTTCTGTTTTACTAAGGAACTACAGAACACAGCAGCCTCCGAGGGCCAGGTGGTGGTGTCT
GGAATGCAGAGTCCGAGGGGCACCCCGCTGCAGGTCCAGTGGTTCGGCAAGGAAGTGAGATCCAAGAC
TCTCCGACTTCAGAATTCTCCAGAAAAACCCAGATCGACAGCTGAACCCGAGGAGATCTGCACCTTG



[View online »](#)

TCATTGCTGAGAGTTTCCTGAAGATGCAGGCATCTTTACCTGCTCAGCCACAAATGACTACGGCTCAGT
GACCAGCACTGCACAGCTTGTTATAACCTCCGCCAACACGAGAACTGTAGTTACGACTCAACAGGAGAA
CCCAACAGTGATCACTTCCAACACTTTCCACCTCCCCCTCCGATCCTGGAGACAGGCTCCTATGAGCTGG
CATCCCAGAAACCATCTGAAATCCAGCAGGTGAACAGCCCAATTTAGGATTTAGCATGGCAGCTTTCA
AATGCAATTAACACTGCAGAGAGGGAGACCAACGGAGTCCATCCCAGCCATGGAGTCAACGGGCTGATT
AATGGCAAAGCTTATGGCAATAAATCTCCTCCAACACCAACTGCCCTGCTTTACCCACTAAGGAACCAC
CGCCACTCCTTGCCAAACCCAACTGGATCCTCTGAAGCTTCAGCAGTGCAGAACCAAGTGCCTGGA
ACAGGAGGCTGCGCCTGGCCCCAGCGCCCCAGGTGTCCCTTGCAACAGCAGCAGCAGCGGCAGCAGC
GCGCCCCGTCGCGCCCTTCCCCCACCGCCACCAGCCTTTCGGAGCTCGCGGCTGTGCGTCGCGCG
TGCCCTCGGAGCCATGAGCGCTCTGGCCTCCCGCCTACCGCCATGCAGTCTCCGGCTCCTTCAACTA
CGCGCGCCCTAAGCAGTTCATCGCGGCGCAGAACCTGGTCCCAGCATCGGGGCTGCCACGCCAACCTCC
AGCCCCAGCTCCTCAGCTTGCCTGACCATTTGCCCCACGCCAGGCCCTTCGGCCGCGCGCCCGGGC
CGCCCTTCGTGGAACCCGAGGCCATGTGGGGCCCGTCTCGCCCTCGCCGCCACCGCCACCTCCGGT
CTTCAGCCCTCTGCAGCTACCCGGTGCCGACGTGTTCCACTGCCACCGCCGCCACCCTCCGCTACCT
AGCTCCACCTCACACTGCGCCTCGCCCGCCGCTTCGGCCCCAGCCAGACGCCCGCAGCCTTCTCAGCG
CCCTGCTGCCCTCTCAGCCACCGCTGTGCTGTCAACGCCCTGGGGCTGCCAAGGGAGTCAACCCCGC
GGGTTTCCAAAGAAGTCCAGTAGAACTGCTAGAATTGCCTCTGATGAGGAGATTCAAGGCACAAAGGAT
GCTGTCATCCAAGACCTGGAACGGAAGCTTCGCTTCAAGGAGGACCTTCTGAACAATGGCCAACCGAGGC
TAACCTATGAGGAAAGAAATGGCTCGCCGCTGCTTGGAGCCGACAGCGCAAACGTCTTCAACATCCAGGA
GCCAGAGGAAACGGCAGCCAATCAGGACGCTGGGGCTCCTCGGGTCTGTAGGGGGTCTCTGGATGGT
CAAAAGGAGTACAAAGTCTCTAGCTGCGAGCAGAGGCTGATTAGCGAGATTGAGTACCGGCTGGAGCGCT
CCCCTGTGGATGAGTCCGGAGACGAGGTGCAGGATCCAGATGTGCTGTGGAGAACGCAACAGCTCCCTT
CTTTGAGATGAAGCTGAAACACTACAAGATCTTTGAGGGGATGCCGGTACTTTACGTGTGAGTGGCT
GGGAATCCAAAGCCAAAGATCTATTGGTTAAAGATGGGAAGCAGATTTCTCCGAAGAGGATCACTACA
CCATTCAGAGAGACCTTGTGGACCTGCTCTCCACACCACGGCCTTACCCTAGACGACGATGGGAA
CTACACCATCATGGCTGCCAACCCCTCAGGGTCCGCTCAGTTGTACAGGAAGGCTAATGGTACAGGCTGTC
AACCAAGAGGCCGAGTCCCGCTCTCCCTCAGGCCATCCTCATGCCAGAAGGCCTCGCTCTCGATCAC
GGGACAGTGGAGATGAAAACGAGCCATTAGGAGCGATTCTTCAGACCTCACTTCTGCAGGCTCCTGG
AGACCTGACCGTTCAGGAAGGCAAGCTCTGCAGGATGGACTGCAAGGTCAAGTGGTTACCAACCCAGAT
CTCAGCTGGCAACTAGATGGAAAGCCATACGCCCCGACAGTGTCAAGATGCTGGTCCGTGAGAAATG
GGGTCCACTCCCTCATTATAGAGCCAGTACGTCCCGGACGCCGCATCTACACATGTATTGCCACCAA
CAGAGCAGGACAGAACTCGTTTAACTGGAGCTTGTGGTTGCTGCTAAGGAAGCACACAAGGCCCTGTG
TTTATGGAGAAGCTACAGAACACGGGGTGTGCTGATGGATACCCAGTGGCGTGGAAATGCCGTGTCTCGG
GAGTGGCGCCACCTCAGATATTTTGAAGAAAGAAAATGAATCGCTCACTCACAGCACTGAGCGAGTAAG
CATGCACCAGGATAATCATGGCTACATCTGCCTGCTCATCCAGGGAGCCCAAAGGAAGACGCTGGGTGG
TACACTGTGTCCGCCAAGAACGAAGCAGGCATTGTGCTCTGCACTGCCCGGCTGGATGTCTACACCCAGT
GGCACCAGCAGCCACAGACCACCAAGCCAAAAAAGTACGGCCCTCGCCAGTGTGCTACGCAGCACTTTC
GGACCAGGGACTAGACATCAAAGCCGCTTCCAACCTGAAGCCAGCCATCTCACCTGACTCTGAACAGC
GGCTTGGTAGAAAAGTGAAGACCTG

ACGCGTACGCGGCCGCTCGAGCAGAACTCATCTCAGAAGAGGATCTGGCAGCAAATGATATCCTGGATT
ACAAGGATGACGACGATAAGGTTTAA

Protein Sequence: >MR231793 representing NM_001293772
 Red=Cloning site Green=Tags(s)

MSETSSHDSFYDSLSDVQEEGKSADFFPGLSAFLSQEEINKSLDLARRAIDSSETEDFDSEKEISQIFSK
 SPISLCETPSHEEPKSGKQTSSERPQDSRRAPVQPLTGDQAERITSPGSKRKPGVSPLLASPSYIRSLRK
 AEKRGAKNPNPSSKPKTAQQSKAGPQSQLCDKAASFIEELTSIFREAAKPRNRSPNGESSPDSGYLSPK
 NQPSALMSASASQSPADQLDQLEMDAEVKQAQGSCLCYQAHQASEETLPLAHIHPQPQKARHLPTAPRF
 IQKLRSQVEAGSRVYLECRVTGNPTPRVRFWFCGKELYNPDVQIHCESGELHTLVIAEAFEDDTGRYT
 CLATNPSGSDSTSAEVFIEGASSTDSSELSFISKAGAMPQAQKKTTSVSLTIGSSAPKTGVTTAVIQP
 LSVPVQQAHSATSYLCRPDGTTMGCLLPVFTKELQNTAASEGQVVVLECRVGRAPPLQVQWFRQGSEIQD
 SPDFRILQKKPRSTAEPEEICTLVIAESFPEDAGIFTCSATNDYGSVTSTAQLVITSANNENCSYDSTGE
 PNSDHFQHFPPPPPILETGSYELASQKPSEIQQVNSPNLGF SMAALQMVFNTAERETNGVHPSHGVNGLI
 NGKAYGNKSPPTPTALLSPTKEPPPLLAKPKLDPLKQLQNVRLQEACAWPPAPPVPCNSSSSGSS
 APPSPPFPFPPPPAFPELAACASVPVSEPMASALASRATAMQSSGSFNYPARKQFIAAQNLPASGLPTPTS
 SPSSSSLPSPSPTPRPFRAPGPPFVEPEAMWGPSSPSPPPPPPPVSPSAAYVPDVFPLPPPPPPPLP
 SSTSHCASPARFGPSQTPAAFLSALLPSQPPVAVNALGLPKGVTPAGFPKSSRTARIAEDEEIQGTKD
 AVIQDLERKLRFKEDLLNNGQPRLYEERMARRLLGADSANVFNIQEPEETAANQDAGAPRASVGGPLDG
 QKEYKVSCEQRLISEIEYRLERSPVDESQDEVQDPDVPVENATAPFFEMKPKHYKIFEGMPVFTFCRVA
 GNPKPKIYWFKDGKQISPKSDHYTIQRDLDTGCSLHTTASTLDDDGNYTMAANPQGRVSTGRLMVQAV
 NQRGRSPRSPSGHPHARRPRSRSDSGDENEPQERFFRPHFLQAPGDLTVQEGKLCRMDCKVSGLPTPD
 LSWQLDGKPIRPDSAHKMLVRENGVHSLIIEPVTSRDAGIYTCIATNRAGQNSFNLELVAAKEAHKAPV
 FMEKLNQNTGVADGYVRLVLECRVSGVPPPQIFWKKENESLTHSTERSVMHQDNHGYICLLIQGATKEDAGW
 YTVSAKNEAGIVSCTARLDVYTTQWHQPPQTTKPKKVRPSASRYAALSDQGLDIKAAFQPEASPHLTLNS
 GLVESEDL

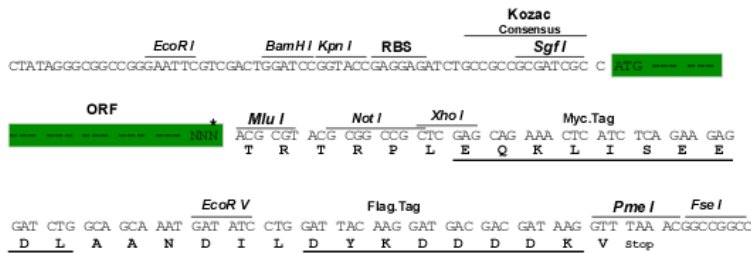
TRTRPLEQKLISEEDLAANDILDYKDDDDKV

Restriction Sites:

Sgfl-MluI

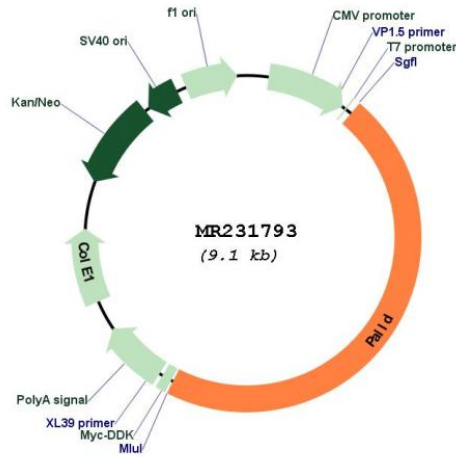
Cloning Scheme:

Cloning sites used for ORF Shuttling:



* The last codon before the Stop codon of the ORF

Plasmid Map:



ACCN: NM_001293772

ORF Size: 4224 bp

OTI Disclaimer: The molecular sequence of this clone aligns with the gene accession number as a point of reference only. However, individual transcript sequences of the same gene can differ through naturally occurring variations (e.g. polymorphisms), each with its own valid existence. This clone is substantially in agreement with the reference, but a complete review of all prevailing variants is recommended prior to use. [More info](#)

OTI Annotation: This clone was engineered to express the complete ORF with an expression tag. Expression varies depending on the nature of the gene.

Components: The ORF clone is ion-exchange column purified and shipped in a 2D barcoded Matrix tube containing 10ug of transfection-ready, dried plasmid DNA (reconstitute with 100 ul of water).

Reconstitution Method:

1. Centrifuge at 5,000xg for 5min.
2. Carefully open the tube and add 100ul of sterile water to dissolve the DNA.
3. Close the tube and incubate for 10 minutes at room temperature.
4. Briefly vortex the tube and then do a quick spin (less than 5000xg) to concentrate the liquid at the bottom.
5. Store the suspended plasmid at -20°C. The DNA is stable for at least one year from date of shipping when stored at -20°C.

RefSeq: [NM_001293772.2](#)

RefSeq Size: 6378 bp

RefSeq ORF: 4227 bp

Locus ID: 72333

UniProt ID: [Q9ET54](#)

Cytogenetics: 8 B3.1

MW: 152.6 kDa

Gene Summary: Cytoskeletal protein required for organization of normal actin cytoskeleton. Roles in establishing cell morphology, motility, cell adhesion and cell-extracellular matrix interactions in a variety of cell types. May function as a scaffolding molecule with the potential to influence both actin polymerization and the assembly of existing actin filaments into higher-order arrays. Binds to proteins that bind to either monomeric or filamentous actin. Localizes at sites where active actin remodeling takes place, such as lamellipodia and membrane ruffles. Different isoforms may have functional differences. Involved in the control of morphological and cytoskeletal changes associated with dendritic cell maturation. Involved in targeting ACTN to specific May be required for the initiation of neural tube closure.[UniProtKB/Swiss-Prot Function]