

## Product datasheet for MR231791

### Erbin (NM\_001289473) Mouse Tagged ORF Clone

#### Product data:

Product Type:	Expression Plasmids
Product Name:	Erbin (NM_001289473) Mouse Tagged ORF Clone
Tag:	Myc-DDK
Symbol:	Erbin
Synonyms:	1700028E05Rik; Erbb2ip; mKIAA1225
Vector:	pCMV6-Entry (PS100001)
E. coli Selection:	Kanamycin (25 ug/mL)
Cell Selection:	Neomycin
ORF Nucleotide Sequence:	>MR231791 representing NM_001289473 Red=Cloning site Blue=ORF Green=Tags(s)

TTTTGTAATACGACTCACTATAGGGCGGCCGGAATTCGTCGACTGGATCCGGTACCGAGGAGATCTGCC  
GCCGCGATCGCC

ATGACTACAAAACGAAGTTTGTGGTTCGCGTTGGTACCATGTCGCTGTCTACGAGGAGAAGAGGAGACAG  
TCACTACTCTAGATTATCTCATTGCAGCTTGGAAACAAGTCCCAAAGAGATTTTCACCTTTGAAAAAC  
TTTAGAGGAGCTCTATTTAGATGCTAATCAGATTGAAGAGCTTCAAAGCAACTTTTAATTGTCAGTCT  
CTACATAAACTAAGTTTGCAGACAATGATTTAACAACATTACCAGCCTCCATTGCAAATCTTATTAATC  
TCAGGGAAGTGGATGTCAGCAAAAATGGAATACAAGAATTTCCAGAAAATATTAATAAATTGTAAAGTTT  
GACAATTGTGGAGGCTAGTGTGAACCTATTTCTAAGCTCCCTGATGGGTTTTCTCAGCTGCTAAACCTA  
ACCCAGTTATATCTGAATGATGCTTTCCTTGAATCTTACCAGCTAATTTGGCAGATTAACCTAACTCC  
AGATTCTAGAAGTCTAGAGAAAACAGTTGAAAATGTTGCCTAAAACCATGAATAGACTGACCCAGCTGGA  
AAGGCTGGATTTGGGAAGTAATGAATTCACAGAAGTGCCTGAAGTACTTGAACAACCTAAGTGGATTGAGA  
GAGTTTGGATGGATGGCAATAGACTGACTTTTATCCAGGTTTATTGGTAGTTGAGACAGCTCACGT  
ACTTGGATGTTTCTAAAATAATATTGAAATGGTTGAAGAAGGAATTTCAACATGTGAAAACTCCAGGA  
CTTTCTTATCAAGTAATTCCTTCAGCAGCTGCCGAAACTATTGGTTCATTGAAAAATGTCACAACCT  
CTAAAATTTGATGAAAACCAATTAATGTATCTACCAGACTCAATAGGAGGGTTAAGGTCAATAGAAGAAC  
TGGATTGCAGTTTCAATGAAATGAAGCTTTCCTTCAATTGGCCAGCTCACAAACATGAGAACATT  
TGCTGCAGATCACAATTACTTACAACAGCTACCCCGAGAGATTGGAACTGGAAAAATATAACTGTGCTG  
TTTCTCCATTGTAATAAACTAGAGACGCTTCCAGAGGAAATGGGTGATATGCAAAAATTAAGTGCATCA  
ATTTAAGTGATAATAGGTTAAAGAAATTTGCCTTTTAGCTTTACAAAGCTACAACAGTTGACTGCTATGTG  
GCTGTGAGATAATCAGTCCAACCTCTGATACCTTCAAAAAGAAACAGACACAGAGACTCAGAAAATG  
GTGCTTACTAATTACATGTTCCCTCAGCAGCCACGGACTGAAGACGTTATGTTTCATATCAGATAATGAAA  
GTTTTAATCCTGCATTGTGGGAAGAACAGAGAAAACAGCGGGCTCAAGTGGCATTGGAATGTGATGAAGA  
CAAAGATGAAAGAGAGGCCACCCAGGGAGGAACTTAAAGAGATATCCAACCCATACCCAGATGAG  
CTTAAGAATATGGTCAAGACTGTTCAAACCATTGTACATAGATTAAGATGAAGAGACTAATGAAGAGT



[View online »](#)

CTGGGAGAGATTTGAAGCAGCATGAAGATCAGCAAGTTGTAATAAGGATAAGTGTGTGAAGACTTCAGA  
AAGTACTACAACAAAAGCAAACCTTGATGAAAGAGAAAAGTATATGAATTCTGTACAGAAAATGAGTGAG  
CCTGAAGCTGAGACCAATGGTGGAAATTTGCCAGTAACTGCAAGTATGAAGTTGTCTGGAAACCTGAAGC  
ATATTGTTAACCATGATGATGTTTTGAGGAATCTGAAGAACCTTCTTCTGATGAAGAAATGAAAATGGC  
AGAGATGCGACCTCCATTAATTGAATCCTCGATTAATCAGCCAAAGTTGTAGCACTTAGTAATAATAAA  
AAGGATGATGCGAAGGATGCAGACTCTTATCCGATGAAGTACACACAACAGTAATCAGAATAACAGCA  
ACTGTTCTCCCGTCCCGAATGTCTGATTGATGCTCTTAATACTGACAGCAGTCAAGACACGCTCACT  
CTGTTCTCCCGTGAACAGACTCCCGTGGATAGTAACTCAAAGTCAGACAAGAAGATGAAAATTTTAAAC  
AGCCTTTTACAAAATGGAGTTAATTTAAACAATTCACCAGAGGAAAAATTCAAAATTAATGATAAAAAGG  
ATTTTAAAGTTACCTGAGTATGATTTGAATATTGAAGAACAGTTAGTTCTGATTGAAAAAGACATTGATTC  
AAAAGCCACATCTGATGACTCTCGCCAGTTAGACCATATCAACATGAATATTAATAAACTTGTGACCAAT  
AATATTTTTCAACCAGAAGTAATGGAAAGATCAAAGATGCAGGATATAGTACTTGGAACAGGCTTTTTAA  
GTATTCATCTAAAATGAGGCTGAGCACATAGAAAATGGGGCTAAGTTTCCGAATTTGGAGTCCATAAA  
TAAGGTAATGGTCTTTGTGAGGACACTGCACCGTCTCCTGGTAGGGTTGAACCACAGAAGGCCAGTTCT  
TCTGCTGACGTGGGCATTTCTAAAAGCACGGAAGATCTATCTCCTCAGAGAAGTGGTCCAACCTGGAGCTG  
TTGTGAAATCTCATAGTATAACTAACATGGAGACTGGAGGTTTAAAAATCTATGACATTCTTGGTATGA  
TGGCCCTCAGCCGCAAGTGCAGCAGTTAAAATCGCATCTGCTGTGGATGGGAAGAACATAGTCAGAAGC  
AAGTCTGCCACACTGCTGTATGATCAGCCCTGCAGGTGTTCACTGCTGCCTCCTCATCTTCTGAGTTAC  
TGTCAGGTACAAAGGCAGTTTTCAAGTTTGATTCAAAATCACACCCTGAAGAGCCAGATATAATAAGAGC  
TGCCACAGTATCTGGCCACAGTCTACACCTCACCTGTATGGTCCCCACAATATAATGTCCAGTACAGT  
GGCAGTGTACAGTGAAGACACCTTGTGGCACCTAACAGAATCCACAATAGATCCTGTGAGTTTTCT  
CTCCTCAGCGCCTTCCAAGATCTGAGAGTGCAGAAAATCACAGTTATGCAAAGCATTCTGCCAACATGAA  
TTTTCTAACCAATAACAATGTTAGAGCCAATACTGGATACCACTTACAACAGAGACTTGGCCAGCCAGG  
CATGGAGAAAATGTGGGCTATCTCCCGAATGACCGACTAGTGCCAGCAGTCACTCGGACTACTATTCAGA  
GACAGAGTAGCGTGTCTTCAACGGCTTCTGTAATCTCGGTGACCCACAAAGGCGTACTGAAGGAGATTA  
CTTATCGTACAGAGAGTTACATTCAATGGGAAGAATCCAGTCATGTGAGGATCAGAGAGACCTCTTTCT  
GCACGAGCGTACAGCATCGATGGCCAAAATACATCCAGGCCTCAGAGTGGCCGCTCCTCTATTAATGAAA  
TACCAGAGAGAACTATGTCAGTTAGTGATTTCAATTACTCACGGACTAGTCTTCAAAAAGACCAAAATAC  
AAGGGTCGGGTCTGAACATTCTGTTAGATCCTCCAGGAAAAAGCAAGGTTCTCATGACTGGCGGGAA  
CAAGTACTACGACACATTGAGGCCAAAAGTTAGAAAAGCATCCGCAGACATCCAGTCCAGGAGAGTGTT  
GCCAAGATGATAGATTATGTCAGAAGAGCAGAACCACCCATCAGGTGCACCTTAGTCACAGAGGTCTTCC  
AGACAGCCTGATGAAAATGCCTTTGAGTAATGGACAAATGGGCCAGCCTCTCAGGCCTCAGGCACATTAT  
AGTCAAACCCATCACCCCTCAGGCATCTGTGGCAAGGCATCCCTCTAGAGAACAATAATTGATTATT  
TGATGCTGAAAGTGGCCACCAGCCTCCATATACACATCCCCATTGTTCTCCTAGACAAGGCCATGAACT  
GGCAAAGCAAGAGATTCGAGTAAGAGTAGAAAAGGATCCAGAACTTGGATTTAGCATATCAGGAGGTGTC  
GGCGGCAGAGGAAACCTTTTCCAGACCTGATGATGATGGTATATTTGTAACAAGGGTACAACCTGAAGGAC  
CAGCATCAAAATTAACAGCCAGGAGATAAAATTAATTCAGGCTAATGGCTACAGTTTTATCAACATTGA  
ACATGGGCAAGCGGTGTCCTTGTAAAACTTTCCATAATGCAGTAGATCTATCATTGTACGAGAAGTT  
TCTTCA

ACGCGTACGCGGCCGCTCGAGCAGAACTCATCTCAGAAGAGGATCTGGCAGCAAATGATATCCTGGATT  
ACAAGGATGACGACGATAAGGTTTAA

Protein Sequence: >MR231791 representing NM\_001289473  
 Red=Cloning site Green=Tags(s)

MTTKRSLFVRLVPCRCLRGEETVTTLDYSHCSLEQVPKEIFFEKTLEELYLDANQIEELPKQLFNCQS  
 LHLKSLPDNDLTTLPASIANLINLRELDVSKNGIQEFPENIKNCKVLTIVEASVNPISKLPDGFSQLNL  
 TQLYLNDAFLEFLPANFGRITKLQILELRENQLKMLPKTMNRLTQLERLDLGSNEFTEVPEVLEQLSGLR  
 EFWMDGNRLTFIPGFIGSLRQLTYLDVSKNNIEMVEEGISTCENLQDFLLSSNSLQQLPETIGSLKNVTT  
 LKIDENQLMYLPDSIGGLRSIEELDSCSFNEIEALPSSIGQLTNMRTFAADHNYLQQLPPEIGNWKNITVL  
 FLHCNKLETLPEEMGDMQKLKVINLSDNRLKNLPSFTKLQQLTAMWLSDNQSKPLIPLQKETDTETQKM  
 VLTNMFPPQPRTEVDFISDNESFNPALWEEQRKQRAQVAFECDEKDEREAPPREGNLKRYPTPYPDE  
 LKNMVKTQIVHRLKDEETNEESGRDLKQHEHQVQVVKDKCVKTSSTTTKSKLDEREKYMNSVQKMS  
 PEATNGGNLPTASMKLSGNLKHIVNHDDVFESEELSSDEEMKMAEMRPPLIESSINQPKVVALSNNK  
 KDDAKDADSLSDEVTHNSNQNSNCSSPSRMSDSVSLNTDSSQDTSLSQSPVKQTPVDSNSKVRQEDENFN  
 SLLQNGVNLNNSPEEKFKINDKKDFKLEPYDLNIEEQVLIEKDIDSKATSDDSRQLDHINMNINKLVTN  
 NIFQPEVMERSKMQDIVLGTGFLSIHPKNEAEHIENGAKFPNLESINKVNGLCEDTAPSPGRVPEQKASS  
 SADVGIKSTEDLSPQRSPTGAVVKSHTITNMETGGLKIYDILGDDGPPSAAVKIASAVDGKNIVRS  
 KSATLLYDQPLQVFTAASSSSELLSGTKAVFKFDSNHNPEEPDIIRAATVSGPQSTPHLYGPPQYVQYS  
 GSATVKDTLWHPKQNPQIDPVSFPPQRLPRSESAENHSYAKHSANMFSNHNNVRANTGYHLQQLAPAR  
 HGEMWAI SPNDRLVPAVTRTTIQRQSSVSTASVNLGDPTRRTEGDYLSYRELHSMGRTPVMGSGRPLS  
 ARAYSIDGPNTSRPQSARPSINEIPERTMSVDFNYSRTSPSKRPNTRVGEHSLDDPPGKSKVPHDWRE  
 QVLRHIEAKKLEKHPQTSPPGECQDDRFMSEEQNHPGALSHRGLPDSLKMKMPLSNGQMGQPLRPQAHY  
 SQTHHPPQASVARHPSREQLIDYLMKVAHQPPYTHPHCSPRQGHKQEIIRVRVEKDPQLGFSISGGV  
 GGRGNPFRPDDDGIFVTRVQPEGPASKLLQPGDKIIQANGYSFINIEHGQAVSLLKTFHNAVLDLIVREV  
 SS

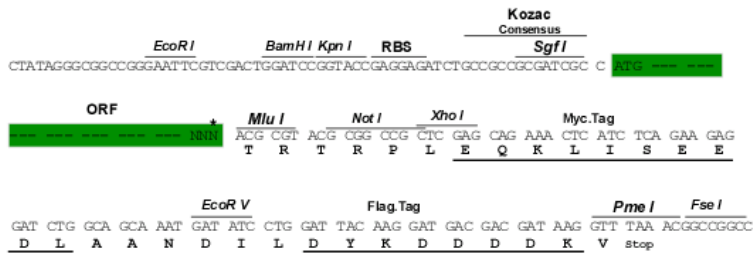
TRTRPLEQKLISEEDLAANDILDYKDDDDKV

Restriction Sites:

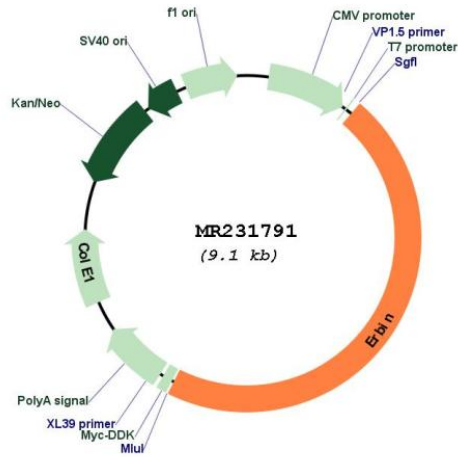
SgfI-MluI

Cloning Scheme:

Cloning sites used for ORF Shuttling:



\* The last codon before the Stop codon of the ORF

**Plasmid Map:**


**ACCN:** NM\_001289473

**ORF Size:** 4206 bp

**OTI Disclaimer:** The molecular sequence of this clone aligns with the gene accession number as a point of reference only. However, individual transcript sequences of the same gene can differ through naturally occurring variations (e.g. polymorphisms), each with its own valid existence. This clone is substantially in agreement with the reference, but a complete review of all prevailing variants is recommended prior to use. [More info](#)

**OTI Annotation:** This clone was engineered to express the complete ORF with an expression tag. Expression varies depending on the nature of the gene.

**Components:** The ORF clone is ion-exchange column purified and shipped in a 2D barcoded Matrix tube containing 10ug of transfection-ready, dried plasmid DNA (reconstitute with 100 ul of water).

**Reconstitution Method:**

1. Centrifuge at 5,000xg for 5min.
2. Carefully open the tube and add 100ul of sterile water to dissolve the DNA.
3. Close the tube and incubate for 10 minutes at room temperature.
4. Briefly vortex the tube and then do a quick spin (less than 5000xg) to concentrate the liquid at the bottom.
5. Store the suspended plasmid at -20°C. The DNA is stable for at least one year from date of shipping when stored at -20°C.

**RefSeq:** [NM\\_001289473.1](#), [NP\\_001276402.1](#)

**RefSeq Size:** 6530 bp

**RefSeq ORF:** 4209 bp

**Locus ID:** 59079

**UniProt ID:** [Q80TH2](#)

**Cytogenetics:** 13 D1

**MW:** 157.7 kDa

**Gene Summary:** Acts as an adapter for the receptor ERBB2, in epithelia. By binding the unphosphorylated ERBB2 'Tyr-1248' receptor, it may contribute to stabilize this unphosphorylated state (By similarity). Inhibits NOD2-dependent NF-kappa-B signaling and proinflammatory cytokine secretion (PubMed:16203728).[UniProtKB/Swiss-Prot Function]