

Product datasheet for MR231761

Arhgap33 (NM_001289682) Mouse Tagged ORF Clone

Product data:

Product Type: Expression Plasmids
Product Name: Arhgap33 (NM_001289682) Mouse Tagged ORF Clone
Tag: Myc-DDK
Symbol: Arhgap33
Synonyms: AW324378; NOMA-GAP; Snx26; TCGAP
Mammalian Cell Selection: Neomycin
Vector: pCMV6-Entry (PS100001)
E. coli Selection: Kanamycin (25 ug/mL)
ORF Nucleotide Sequence: >MR231761 representing NM_001289682
 Red=Cloning site Blue=ORF Green=Tags(s)

TTTTGTAATACGACTCACTATAGGGCGGCCGGAATTCGTCGACTGGATCCGGTACCGAGGAGATCTGCC
 GCC**CGATCGCC**

ATGCTCCAGGCACAGAAACAGTCAGATCCCATCCTGCCTTGGGGAGCTTCATGGGCTGGCAGGGGACAGA
 CTCTGAGGGCCCCGAGCACTGACAGCCTGGATGGCCAGGGGAGGGCTCAGTGCAGCCCGTACCCACTAC
 TGGGGGGCCGGTACAAAGGGGAAGCCTGGGAAGAGGCTCTCAGCTCCTCGAGGCCCTTCCCGGCTG
 GCTGACTGTGCCATTTCCACTATGAGAATGTTGACTTTGGCCACATTCAGCTCCTGCTGTCTCCAGAGC
 GTGAGGGCCCCAGCCTCTCTGGAGAAAATGAGCTGGTCTTTGGGGTACAGGTGACCTGTCCAGGGCCGCTC
 CTGGCCAGTCTCCGGAGCTATGACGATTTCCGTTCTCTGGATGCCATCTCCACCGGTGCATATTTGAC
 CGGAGATTTTCTGCCTCCAGAGCTCCCTCCACCTCCAGAGGGTACCAGGGCTGCCAGATGCTGGTAC
 CGCTGCTGCTGCAGTACCTGGAGACCCTGTCCAGGACTGGTGGACAGTAACCTCAACTGTGGACCTGTGCT
 CACTTGGATGGAGCTGGACAACCATGGCCGGCGCCTGCTCCTCAGTGAGGAAGCCTCCCTCAATATCCCT
 GCTGTGGCTGTGCCACGTGGTCAAGCGGTACACTGCCAGGCGCCAGATGAGCTGTCTTTGAGGTGG
 GAGACATTGTCTCAGTGATCGACATGCCACCTACAGAGGATCGGAGCTGGTGGCGGGGCAAACGGGGCTT
 CCAGGTTGGTTTCTTCCCGAGTGAAGTGTGTGGAAGTCTTACGGAGAGGCCAGGGCCTGGCCTAAAGGCA
 GATGCTGACAGTCCCCTGTGTGGCATCCCAGCTCCCAGGGCATCTTCTCTGACCTCAGCTGTGCCCC
 GGCCACGTGGGAAGCTGGCAGGACTCCTCCGACCTTCATGCGCTCTCGTCTTCTCGCCAGCGGCTGCG
 CCAACGGGAATCCTGCGGCAGAGGGTGTGGTGTGATCTTGAGAGCACCTCAGCAACTCAGGCCAA
 GACGTGCCCAAGTGTGCGCTGCTGCTGAGTTTATTGAGGCCATGGTGTGGTGGATGGAATCTACA
 GGCTCTTGGCGTGTCTCCAACATCCAGAGGCTTCGGCATGAGTTTGATAGTGAGAGGATCCCTGAGCT
 GTCTGGCCCCGCCTTCTACAAGATATCCACAGTGTGCTCCTCCCTCTGCAAGCTCTACTTCCGGAACTG
 CCCAACCCCTTGCTCACCTACCAGCTCTATGGGAAGTTCAGTGAGGCTATGTCAGTGCCTGGGGAGGAAG
 AACGCCTAGTGCAGTGCATGACGTATCCAGCAGCTGCCTCCACCACACTACAGGACCTGGAGTACCT
 GCTGAGGCACCTGGCCCGCATGGCAAGACACAGCGCTAACACCAGCATGCATGCCCGCAACTGGCCATT



Protein Sequence: >MR231761 representing NM_001289682
 Red=Cloning site Green=Tags(s)

```

MLQAQKQSDPILPWGASWAGRGQTLRARSTDSLDPGEGSVQPVPTTGGPGTKGKPGKRLSAPRGPFPR
ADCAHFHYENVDFGHIQLLLSPEREGPSLGENELVFGVQVTCQGRSWPVLRSYDDFRSLDAHLHRCIFD
RRFSCLPELPPPEGTRAAQMLVPLLLQYLETL SGLVDSNLNCGPVL TWMELDNHGRLLSEEASLNIP
AVAAAHVVKRYTAQAPDELSFEVGDIVSVIDMPPTEDRSWWRGKRGFQVGFPPSECVELF TERPGPLKA
DADSP LCGIPAPQGISSLTS AVPRPRGKLAGLLRTFMRSRPSRQRLRQRGILRQRFVGC DLGEHLNSGQ
DVPQVLRCCSEFIEAHGVVDGIYRLSGVSSNIQRLRHEFDSERIPEL SGP AFLQDIHSVSSLCKLYFREL
PNPLLTYQLYGK FSEAMSVPGEEERLVRVHDIQQLPPPHYRTLEYLLRHLARMARHSANTSMHARNLAI
VWAPNLLRSMELSVGLGGAAAFREVRVQSVVVEFLLTHVEVLFSDTFTSAGLDPAGRCLLPRPKSLAGS
SPSTRLLTLEEAQARTQGR LGTPEPTPKTPASPVERRRKREAEKQRKPGGSSWKTF FALGRGPSIPRK
KPLPWLGGSRAPPQPSGSRPDTVTLRSKSEESLSSQASGAGLQRLHRLRRPHSSDAFPVGPAPAGSCE
SLSSSSSSSSSSSSSSSSSAGGLGPLSGSPSHRTSAWLDGDDLDFSPPRCLEGLRGLDFDPLTFRCS
SPTPGDPAPPASPAPPASASAFP PRATPQALSPHGPTKPA SPTALDI SEPLAVSVPPAVLELLGAGGTPA
SATPTPALSPHLIPLLLRGAE AQLSDTCQQEISSKLAPTRGAPGQSPGGMDSPLLPPLLLRPGGAPP
PPPKNPARLMALALAERAQQVAEQSQEQGGTTPAPHSPFRRSLSLEVGGEVGTSGSGIHPPLAHPG
AWAPGPPPYLPRQSDGSLVRSQRPLGTSRRSPRGPSPVSAHLRASGAYRDAPEMAAQSPCSVPSQGSNP
SFFSTPRECLPPFLGVPKQGLYSLGPPSFPPSSPAPVWRNSLGAPALDRGENLYEIGVGEGETSYSGPS
RSWSPFRSMPDRHNASYGMLGQSPPLHRSPDFLLSYPPPPSCFPPEHLTHSVSQR LARRPTRPEPLVYN
LALGPRGSPSPASSSSSPAHPRSRSDPGPPVPRLPQKQRAPWGPHTPHRVPGWGPSEPFLLYRPAPPS
YGRGGEVRGSLYRNGGHRGEGAGPPPYPTPSWSLHSEGTQTRSYC
  
```

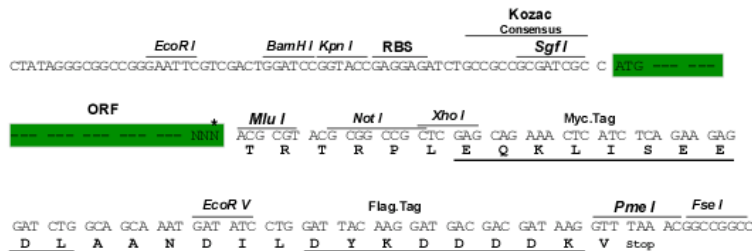
TRTRPLEQKLI SEEDLAANDILDYKDDDDKV

Restriction Sites:

SgfI-MluI

Cloning Scheme:

Cloning sites used for ORF Shuttling:



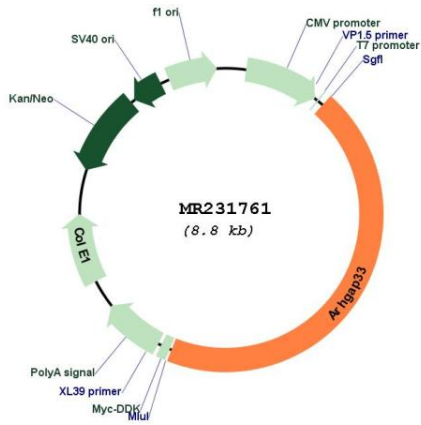
* The last codon before the Stop codon of the ORF

ACCN: NM_001289682

ORF Size: 3915 bp

| | |
|-------------------------------|---|
| OTI Disclaimer: | The molecular sequence of this clone aligns with the gene accession number as a point of reference only. However, individual transcript sequences of the same gene can differ through naturally occurring variations (e.g. polymorphisms), each with its own valid existence. This clone is substantially in agreement with the reference, but a complete review of all prevailing variants is recommended prior to use. More info |
| OTI Annotation: | This clone was engineered to express the complete ORF with an expression tag. Expression varies depending on the nature of the gene. |
| Components: | The ORF clone is ion-exchange column purified and shipped in a 2D barcoded Matrix tube containing 10ug of transfection-ready, dried plasmid DNA (reconstitute with 100 ul of water). |
| Reconstitution Method: | <ol style="list-style-type: none">1. Centrifuge at 5,000xg for 5min.2. Carefully open the tube and add 100ul of sterile water to dissolve the DNA.3. Close the tube and incubate for 10 minutes at room temperature.4. Briefly vortex the tube and then do a quick spin (less than 5000xg) to concentrate the liquid at the bottom.5. Store the suspended plasmid at -20°C. The DNA is stable for at least one year from date of shipping when stored at -20°C. |
| RefSeq: | NM_001289682.1 , NP_001276611.1 |
| RefSeq Size: | 4439 bp |
| RefSeq ORF: | 3918 bp |
| Locus ID: | 233071 |
| UniProt ID: | Q80YF9 |
| Cytogenetics: | 7 B1 |
| MW: | 139.8 kDa |
| Gene Summary: | May be involved in several stages of intracellular trafficking (By similarity). Could play an important role in the regulation of glucose transport by insulin. May act as a downstream effector of RHOQ/TC10 in the regulation of insulin-stimulated glucose transport. [UniProtKB/Swiss-Prot Function] |

Product images:



Circular map for MR231761