

Product datasheet for MR231739

Tbc1d9b (NM_001290760) Mouse Tagged ORF Clone

Product data:

Product Type:	Expression Plasmids
Product Name:	Tbc1d9b (NM_001290760) Mouse Tagged ORF Clone
Tag:	Myc-DDK
Symbol:	Tbc1d9b
Vector:	pCMV6-Entry (PS100001)
E. coli Selection:	Kanamycin (25 ug/mL)
Cell Selection:	Neomycin
ORF Nucleotide Sequence:	>MR231739 representing NM_001290760 Red=Cloning site Blue=ORF Green=Tags(s)

TTTTGTAATACGACTCACTATAGGGCGGCCGGGAATTCGTCGACTGGATCCGGTACCGAGGAGATCTGCC
GCC**CGATCGCC**

ATGTGGCTCGGGCCGAGGAGTGTGGTGGCTAACGCGCTATGGGTGACGGAGCGGGCCAACCCCTTCT
TCGTGCTGCAGCGGCCGAGGCCACGGCAAGGGCGGAGGCCCTCACGGTCTTCTGTGGCACCCTGGA
TGTGGTGTGGACTCCAGCGCCGTGTGGCCCTTACCGCATCCTGCACCAGACCCAGGACTCGCAGGTC
TACTGGATAGTGGCATGTGGTTCTCCCGAAAAGAGATACCAAACACTGGGAATGGCTGGAAAACAAC
TGCTTCAGACACTGTCCATCTTCGACAACGAGGAGGACATCACTACCTTCGTCAAGGGCAAGATAACGG
CATCATCGCAGAAGAAACAAGAACCTGCAGCCCCAGGGGACGAGGACCCAGGAAATCAAGGAGGCA
GAGCTAAAGATGCGGAAGCAGTTCGGCATGCCAGAGGGCGAGAAGCTGGTCAACTACTACTCCTGTAAC
TCTGGAAGGGCCGCTGCCGCGCCAGGGCTGGCTCTACCTGACCGTCAACCACCTGTGCTTCTACTCCT
CCTGCTGGGAAGGAAGTGAACCTGGTGGTACAGTGGGTGGACGTCACACGCTGGAGAAGAATGCCACT
TACTCTCCCGAGAGCATCCGTGTGGACACACGGGACCAGGAGCTGTTTTTCTCCATGTTCTCTAAACA
TTGGCGAGACCTCAAGCTTATGGAGCAGCTGGCCAACCTGGCCATGCGACAACCTGGACAGCGAGGG
CTTCTGGAGGACAAGGCCCTACCCAGGCTATCCGGCCACATAAGAACATCTCAGCTCTAAGCGAGAC
CTAGATGCCCGAGCCAAGATGAGTGTACAGGGCCACGTTCCGGCTACCCAAAGACGAGCGGCTGGATG
GCCACACAGGCTGCACCCTATGGACGCCATTTAAACAAGCTACATATCCCGGCCAGATGTTTCATCTCAA
TAACTACATCTGCTTTGCCAGCAAGGAGGAAGATGCGTGGCCGCTCATCATACCCCTGAGGGAGGTGACC
ATTGTTGAAAAAGCCGACAGCTCCAGCGTCTCCCGAGCCCTCTGTCTATCAGCACCAAGAGTAAATGA
CCTTCTGTTTGGCAACCTGAAAGACCGTGACTTCTGGTTCAGAGGATCTGACTTCTCCAGAAAAC
GCCGTCGAAGCAGACGGGACGAGCATTGGGGAAACAAAGGCCAGTGTTCAGACCCAGCCCCAGAGTCT
TCCCAACTCCACAGGAGCTTCTGAGCCACCCGCAAGCCATCCTCTCCCTCAGCAGCCCTCCGAGTT
TCAGTACCCAGGAGATTCTACTACTTCCAGGGCTGCTCAAAGTCTTCCAGAAGAATCACCCATGGA
GGACCTTGGCGCAAAGGGGCAAGGAGAAGATGAAGGAGGAATCCTGGAACATCCACTTCTTTGAGTAC
GGGCGTGGCATGTGCATGTACCGAACAGCCAAAACCCGGGAGCTGGTCTGAAAGGCATCCCTGAGAGCC
TCCGAGGGGAGCTTTGGCTCCTTCTCTGGGCTGGAATGAGATGGTGACCCATCCCGCTACTACGC
TGAGCTAGTGGAGAAGTCCCTGGGAAGTACAGCTTGGCTACCGAGGAGATAGAGCGGGACCTCCATCGC



[View online »](#)

TCCATGCCCGAGCACCTGCTTTCCAGAATGAGCTCGGGATCGCTGCGCTCCGGCGGGTGTGACTGCCT
ACGCCTTCCGAAACCCTACTATTGGCTACTGCCAGGCAATGAACATCGTGACTTCCGTGCTCCTGTCTA
CGGCAGTGAGGAGGAAGCCTTCTGGCTGCTGGTGGCCCTGTGTGAGCGCATGCTGCCGACTACTACAAC
ACCAGGGTAGTGGGAGCCCTCGTAGACCAGGGCATCTTTGAAGAGCTCACGAGAGATGCTCTGCCCGGC
TCTCAGAGAAGATGCAAGAGCTGGGGTGATCTCCAGCATCTCGTGTCTGTTCTGACCCTCTTCT
CAGCGTCATGCCCTTTGAGAGCGCCGTGGTCAATGTGCGACTGCTTCTTCTACGAGGCATCAAGGTGATC
CTGCAGGTGGCCCTGGCTGTGCTGGACGCCAACGTGGAGCAGCTGCTGGACTGCAATGACGAGGGCGAGG
CCATGACCGTGCTGGGCAGGTACCTGGACAATGGGTCAACAAGCAGAGCATTTCTCCACCTATCCCACA
CCTCCACGCTCTGCTGACCAGTGGAGATGACCCTCCTGTGGAGGTGGACATCTTTGACCTCTGAGAGTA
TCCTACGAGAAGTTCAGCAACCTGAGGGCTGACGACATTGAACAGATGCGGTTTAAACAGAGGCTGAAGG
TGATCCAGTCTTGAAGACACGGCTAAGAGAAGCGTGGTCCGAGCCATACCAGGGGACATCGGCTTCTC
CATTGAAGAGCTGGAGGATCTTTACATGGTGTAAAGGCCAAGCATCTGGCAAGCCAGTACTGGGGTGGT
AACCGCTCAGCAGCCGTCACCGAGACCCAGCCTGCCCTACCTGGAGCAGTACCGGATCGATGCCAGCC
AGTTTCGGGAGCTCTTTCAGCCTGACGCCTTGGCCCTGTGGCTCTCACAGCCTGTGTTGGCAGGCCG
CATGTTCCGACTCTGGATCAAAAACAAGGACTCACTGATCAACTCAAGGAGTTTGTGACAGGGATGAGT
GGGATGTACCATGGAGACCTCACTGAGAAGCTCAAGGCGCTCTACAACTGCACCTGCCCCAGCTCTGA
TCCCAGAGGAAGCCGAGTCAGCCCTGGAGGCCGCCATTACTTACAGAGGATAGCTCCTCGGAAGCATC
TCCTCTGGCCTCAGATCTGGATCTTTCTGCCCTGGGAGGCTCAAGCACTGCTACAGGAGCAGCAGGAA
GGAAGTGGAAATGAGGACACCCAGAAAGAAGAGAGGAGAAGGGGACCAGCCCTCCTGACTACCGACT
ACCTTCGAATGTGGCTAAGGAAAAAGAGGCTCAGAAGGAAACCATTAAAGACCTTCCAAGATGAACCA
GGAGCAATTCATCGAGCTGTGTAACACTTTACAACATGTTTAGCGAAGACCCTATGGAACAGGACTTG
TATCATGCCATCGCCACTGTGGCCAGCCTTCTCCTCCGATTGGTGAGGTGGGGAAGAAGTTTTCGGCC
TGACAACCAAGAAGCCAGGGATGGTGCCACAGTGGGGATCCCAACAGTGCCACAGAAGAGGATGAACC
ACCCACACCCAACTCCATCAGGACCCAACACAGGAATGTCAGCCACCAGCTGCAGGGGACCGGCAGGCC
AAAGCCAGTGGCGACATGCATCTCGGAAAGCATTGCAGGATAGTCATGTGATAGTGGAGGGAGGCAGCG
GTGAGGGGCAGGGCTCTCCTTCCCTGCTTTTGTCTGATGATGAAACCAAAGATGACATGTCCATGTCCTC
TTACTCAGTAGTCAGCACGGGCTCACTGCAGTGCAGGACCTCACGGAAGACACGGTGTGGTGGGAGGA
GGAGCCTGCAGCCCCACCGCCACCTCACGGCGGGGGGCACTGTGGACACAGACTGGTGCATTTCTTTCG
AGCAGATCCTGGCCTCCATCCTAACAGAGTCTGTGCTAGTGAACCTTTTGAAGAAGGGTAGACATTGG
ACTCAAGATCAAGGACCAAAAAGAAAGTAGAAAGGCAGTTTAGCACCTCCAGTGACCATGAGCCCCCTGGG
GTCTTGGGC

ACGCGTACGCGGCCGCTCGAGCAGAACTCATCTCAGAAGAGGATCTGGCAGCAAATGATATCCTGGATT
ACAAGGATGACGACGATAAGGTTTAA

Protein Sequence: >MR231739 representing NM_001290760
 Red=Cloning site Green=Tags(s)

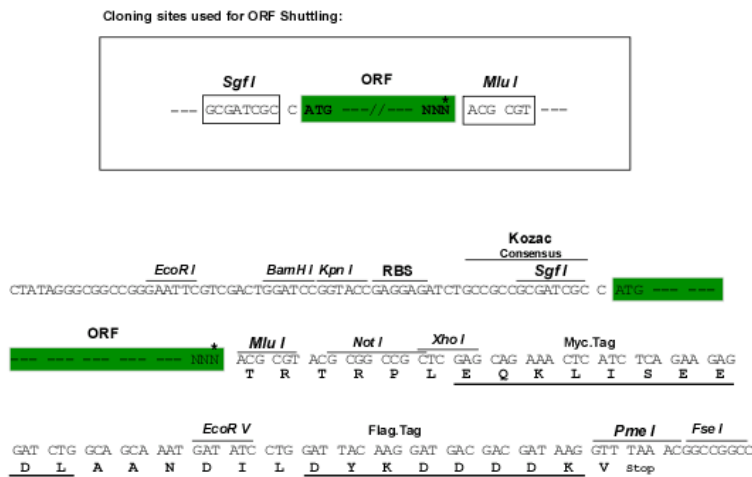
MWLGPEEVLVANALWVTERANPFFVLQRRRGHGKGGGLTGLLVGTLDVVLDSSARVAPYRILHQTQDSQV
 YWIVACGSSRKEITKHWLENNLLQTL SIFDNEEDITTFVKGKIHGIIAEENKNLQPQGDDEPGKFKEA
 ELKMRKQFGMPEGEKLVNYYSNCFWKGKRVPRQGWLYLTVNHLCFYSFLLGKEVSLVVQWVDVTRLEKNAT
 LLLFPESIRVDTRDQELFFSMFLNIGETFKLMEQLANLAMRQLLDSEGFLEDKALPRPIRPHKNISALKRD
 LDARAKNECYRATFRLPKDERLDGHTGCTLWTFPNKLHIPPQMFISNNYICFASKEEDACRLIIPLREVT
 IVEKADSSSVLPSPLSISTKSKMTFLFANLKDRDFLVQRISDFLQKTPSKQTGSSIGGKTASVSDPAPES
 LPTPQEAESPSPSSPLSSPPSFSTQEIPTTSQGLLKVFQKNSPMEDLGAKGAKEKMKKEESWNIHFFEY
 GRGCMYRTAKTRELVLKGIPELREGELWLLFSGAWNEMVTHPGYYAELVEKSLGKYSLATEEIERDLHR
 SMPEHPAFQNELGIAALRRVLTAFAFRNPTIGYCAQAMNIVTSVLLLYGSEEEAFWLLVALCERMLPDYYN
 TRVVGALVDQGI FEELTRDVL PRLSEKMQELGVISSISLSWFLTLFLSVMPEFSAVVIVDCFFYEGIKVI
 LQVALAVLDANVEQLLDNDGEAMTVLGRYLDNVVVKQSI SPPIPHLHALLTSGDPPVEVDIFDLLRV
 SYEKF SNLRADDIEQMRFKQRLKVIQSLEDTAKRSVVR AIPGDIGFSIEELEDLYMVFKAKHLASQYWGG
 NRSAAVHRDPSLPYLEQYRIDASQFREL FASLTPWACGSHTPVL AGRMFRLLDQNKDSLINFKEFVTGMS
 GMYHGDLTEKLKALYKHLPPALIPEEAESALEAAHYFTEDSSSEASPLASDLDFLPWEAQALLQEQQE
 GSGNEDTPERREEKGTSPDYRHYLRMWAKEKEAQKETIKDLPKMNQEQFIELCKTLNMFSEDPMEQDL
 YHAIATVASLLLRIGEVGKKFSALTTKKPRDGAHSGDPNSATEEDEPPTPKLHQDPTQECQPPAAGDRQA
 KASGDMHLGKALQDSHVIVEGGSGEGQGSPLLLSDDETKDDMSMSSYSVVSTGSLQCEDLTEDTVLVGG
 GACSPTATSRAGTVDTDWCISFEQILASILTESVLVNF FEKRVDIGLKI KDQKKVERQFSTSSDHEPPG
 VLG

TRTRPLEQKLI SEEDLAANDILDYKDDDDKV

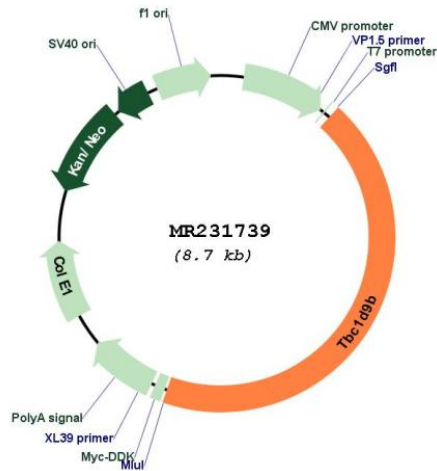
Restriction Sites:

SgfI-MluI

Cloning Scheme:



* The last codon before the Stop codon of the ORF

Plasmid Map:


ACCN: NM_001290760

ORF Size: 3789 bp

OTI Disclaimer: The molecular sequence of this clone aligns with the gene accession number as a point of reference only. However, individual transcript sequences of the same gene can differ through naturally occurring variations (e.g. polymorphisms), each with its own valid existence. This clone is substantially in agreement with the reference, but a complete review of all prevailing variants is recommended prior to use. [More info](#)

OTI Annotation: This clone was engineered to express the complete ORF with an expression tag. Expression varies depending on the nature of the gene.

Components: The ORF clone is ion-exchange column purified and shipped in a 2D barcoded Matrix tube containing 10ug of transfection-ready, dried plasmid DNA (reconstitute with 100 ul of water).

Reconstitution Method:

1. Centrifuge at 5,000xg for 5min.
2. Carefully open the tube and add 100ul of sterile water to dissolve the DNA.
3. Close the tube and incubate for 10 minutes at room temperature.
4. Briefly vortex the tube and then do a quick spin (less than 5000xg) to concentrate the liquid at the bottom.
5. Store the suspended plasmid at -20°C. The DNA is stable for at least one year from date of shipping when stored at -20°C.

RefSeq: [NM_001290760.1](#), [NP_001277689.1](#)

RefSeq Size: 5271 bp

RefSeq ORF: 3792 bp

Locus ID: 76795

UniProt ID: [Q5SVR0](#)

Cytogenetics: 11 B1.3

MW: 142.2 kDa

Gene Summary: May act as a GTPase-activating protein for Rab family protein(s).[UniProtKB/Swiss-Prot Function]