

Product datasheet for MR231738

Tbc1d9b (NM_001290759) Mouse Tagged ORF Clone

Product data:

Product Type:	Expression Plasmids
Product Name:	Tbc1d9b (NM_001290759) Mouse Tagged ORF Clone
Tag:	Myc-DDK
Symbol:	Tbc1d9b
Vector:	pCMV6-Entry (PS100001)
E. coli Selection:	Kanamycin (25 ug/mL)
Cell Selection:	Neomycin
ORF Nucleotide Sequence:	>MR231738 representing NM_001290759 Red=Cloning site Blue=ORF Green=Tags(s)

TTTTGTAATACGACTCACTATAGGGCGGCCGGGAATTCGTCGACTGGATCCGGTACCGAGGAGATCTGCC
GCC**CGATCGCC**

ATGTGGCTCGGGCCCGAGGAGTGTGGTGGCTAACGCGCTATGGGTGACGGAGCGGGCCAACCCCTTCT
TCGTGCTGCAGCGGCCCGAGGCCACGGCAAGGGCGGAGGCCCTCACGGTCTTCTGTGGCACCCTGGA
TGTGGTGTGGACTCCAGCGCCGTGTGGCCCTTACCGCATCCTGCACCAGACCCAGGACTCGCAGGTC
TACTGGATAGTGGCATGTGGTTCTCCCGAAAAGAGATACCAAACACTGGGAATGGCTGGAAAACAAC
TGCTTCAGACACTGTCCATCTTCGACAACGAGGAGGACATCACTACCTTCGTCAAGGGCAAGATAACGG
CATCATCGCAGAAGAAACAAGAACCTGCAGCCCCAGGGGACGAGGACCCAGGAAATCAAGGAGGCA
GAGCTAAAGATGCGGAAGCAGTTCGGCATGCCAGAGGGCGAGAAGCTGGTCAACTACTACTCCTGTAAC
TCTGGAAGGGCCGCTGCCGCGCCAGGGCTGGCTCTACCTGACCGTCAACCACCTGTGCTTCTACTCCT
CCTGCTGGGAAGGAAGTGAACCTGGTGGTACAGTGGTGGACGTCACACGCTGGAGAAGAATGCCACT
TACTCTCCCGAGAGCATCCGTGTGGACACACGGGACCAGGAGCTGTTTTCTCCATGTTCTCTAAACA
TTGGCGAGACCTCAAGCTTATGGAGCAGCTGGCCAACCTGGCCATGCGACAACCTGGACAGCGAGGG
CTTCTGGAGGACAAGGCCCTACCCAGGCTATCCGGCCACATAAGAACATCTCAGCTCTAAGCGAGAC
CTAGATGCCCGAGCCAAGATGAGTGTACAGGGCCACGTTCCGGCTACCCAAAGACGAGCGGCTGGATG
GCCACACAGGCTGCACCCTATGGACGCCATTTAAACAAGCTACATATCCCGGCCAGATGTTTCATCTCAA
TAACTACATCTGCTTTGCCAGCAAGGAGGAAGATGCGTGGCCGCTCATCATACCCCTGAGGGAGGTGACC
ATTGTTGAAAAGCCGACAGCTCCAGCGTCTCCCGAGCCCTCTGTCTATCAGCACCAAGAGTAAATGA
CCTTCTGTTTGGCAACCTGAAAGACCGTGACTTCTGGTTCAGAGGATCTGACTTCTCCAGAAAAC
GCCGTCGAAGCAGACGGGACGAGCATTGGGGAAACAAAGGCCAGTGTTCAGACCCAGCCCCAGAGTCT
TCCCAACTCCACAGGAGCTTCTGAGCCACCCGCAAGCCATCCTCTCCCTCAGCAGCCCTCCGAGTT
TCAGTACCCAGGAGATTCTACTACTTCCAGGGCTGCTCAAAGTCTTCCAGAAGAACTACCCATGGA
GGACCTTGGCGCAAAGGGGCAAGGAGAAGATGAAGGAGGAATCCTGGAACATCCACTTCTTTGAGTAC
GGGCGTGGCATGTGCATGTACCGAACAGCCAAAACCCGGGAGCTGGTCTGAAAGGCATCCCTGAGAGCC
TCCGAGGGGAGCTTTGGCTCCTTCTCTGGGCTGGAATGAGATGGTACCCATCCCGCTACTACGC
TGAGCTAGTGGAGAAGTCCCTGGGAAGTACAGCTTGGCTACCGAGGAGATAGAGCGGGACCTCCATCGC



[View online »](#)

TCCATGCCCCGAGCACCTGCTTTCCAGAATGAGCTCGGGATCGCTGCGCTCCGGCGGGTGTGACTGCCT
ACGCCTTCCGAAACCCTACTATTGGCTACTGCCAGGCAATGAACATCGTGACTTCCGTGCTCCTGTCTA
CGGCAGTGAGGAGGAAGCCTTCTGGCTGCTGGTGGCCCTGTGTGAGCGCATGCTGCCCGACTACTACAAC
ACCAGGGTAGTGGGAGCCCTCGTAGACCAGGGCATCTTTGAAGAGCTCACGAGAGATGCTCTGCCCGGC
TCTCAGAGAAGATGCAAGAGCTGGGGTGATCTCCAGCATCTCGCTGCTCTGGTTCTGACCCTCTTCT
CAGCGTCATGCCCTTTGAGAGCGCCGTGGTTCATTGTGACTGCTTCTTCTACGAGGGCATCAAGGTGATC
TGCAGGTGGCCCTGGCTGTGCTGGACGCCAACGTGGAGCAGCTGCTGGACTGCAATGACGAGGGCGAGG
CCATGACCGTGCTGGGCAGGTACCTGGACAATGTGGTCAACAAGCAGAGCATTTCTCCACCTATCCACA
CCTCCACGCTCTGCTGACCAGTGGAGATGACCCTCCTGTGGAGGTGGACATCTTTGACCTCCTGAGAGTA
TCTACGAGAAGTTCAGCAACCTGAGGGCTGACGACATTGAACAGATGCGGTTTAAACAGAGGCTGAAGG
TGATCCAGTCTTGAAGACACGGCTAAGAGAAGCGTCCGAGCCATACCAGGGGACATCGGCTTCTCCAT
TGAAGAGCTGGAGGATCTTTACATGGTGTAAAGGCCAAGCATCTGGCAAGCCAGTACTGGGGTGGTAAC
CGCTCAGCAGCCCTCCACCGAGACCCAGCCTGCCCTACCTGGAGCAGTACCGGATCGATGCCAGCCAGT
TTGGGAGCTCTTGCCAGCCTGACGCCTTGGGCCTGTGGCTCTCACACGCCTGTGTTGGCAGGCCGCAT
GTTCCGACTCCTGGATCAAAACAAGGACTCACTGATCAACTTCAAGGAGTTTGTGACAGGGATGAGTGGG
ATGTACCATGGAGACCTCACTGAGAAGCTCAAGGCGCTTACAAACTGCACCTGCCCCAGCTCTGATCC
CAGAGGAAGCCGAGTCAAGCCCTGGAGGCCGCCATTACTTACAGAGGATAGCTCCTCGGAGCATCTCC
TCTGGCCTCAGATCTGGATCTTTTCTGCCCTGGGAGGCTCAAGCACTGTACAGGAGCAGCAGGAAGGA
AGTGGAAATGAGGACACCCAGAAAGAAGAGAGGAGAAGGGGACCAGCCCTCCTGACTACCGACACTACC
TTCGAATGTGGGCTAAGGAAAAAGAGGCTCAGAAGGAAACCATTAAGGACCTTCCCAAGATGAACCAGGA
GCAATTCATCGAGCTGTGTAACACTTTACAACATGTTAGCGAAGACCCTATGGAACAGGACTTGTAT
CATGCCATCGCCACTGTGGCCAGCCTTCTCCTCCGATTGGTGAGGTGGGAAGAAGTTTTCGGCCCTGA
CAACCAAGAAGCCAGGGATGGTGCCACAGTGGGGATCCCAACAGTGCCACAGAAGAGGATGAACCACC
CACACCCAAACTCCATCAGGACCCAACACAGGAATGTCAGCCACCAGCTGCAGGGGACCGCAGGCCAAA
GCCAGTGGCGACATGCATCTCGGAAAGCATTGCAGGATAGTCATGTGATAGTGGAGGGAGGCAGCGGTG
AGGGGCAGGGCTCTCCTTCCCTGCTTTTGTCTGATGATGAAACCAAGATGACATGTCCATGTCTCTTA
CTCAGTAGTCAGCACGGGCTCACTGCAGTGCAGGACCTCACGGAAGACACGGTGTGGTGGGAGGAGGA
GCCTGCAGCCCCACCGCCACCTCACGGGCGGGGGCACTGTGGACACAGACTGGTGCATTTCTTCGAGC
AGATCCTGGCCTCCATCCTAACAGAGTCTGTGCTAGTGAATTCTTTGAGAAGAGGGTAGACATTGGACT
CAAGATCAAGGACAAAAGAAAGTAGAAAGGCAGTTTAGCACCTCCAGTGACCATGAGCCCCCTGGGGTC
TTGGGC

ACGCGTACGCGGCGCTCGAGCAGAACTCATCTCAGAAGAGGATCTGGCAGCAAATGATATCCTGGATT
ACAAGGATGACGACGATAAGGTTTAA

Protein Sequence: >MR231738 representing NM_001290759
 Red=Cloning site Green=Tags(s)

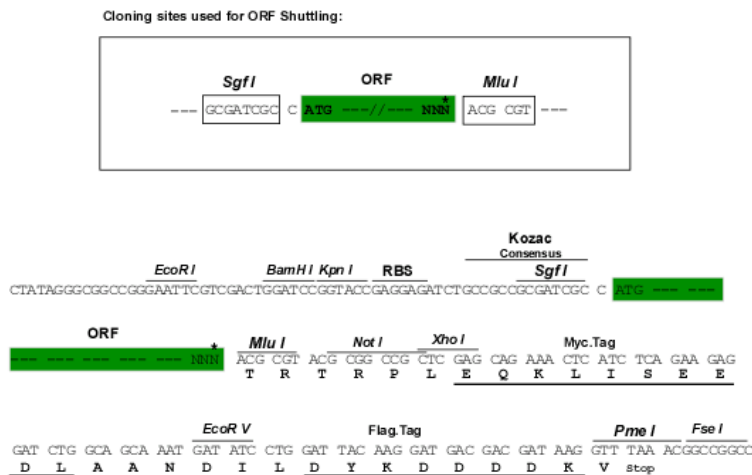
MWLGPEEVLVANALWVTERANPFFVLQRRRGHGKGGGLTGLLVGTLDVVLDSSARVAPYRILHQTQDSQV
 YWIVACGSSRKEITKHWLENNLLQTL SIFDNEEDITTFVKGKIHGIIAEENKNLQPQGDDEPGKFKEA
 ELKMRKQFGMPEGEKLVNYYSNCFWKGVRPQGWLYLTVNHLCFYSFLLGKEVSLVVQWVDVTRLEKNAT
 LLFPESIRVDTRDQELFFSMFLNIGETFKLMQELANLAMRQLLDSEGFLEDKALPRPIRPHKNISALKRD
 LDARAKNECYRATFRLPKDERLDGHTGCTLWTFPNKLHIPPQMFISNNYICFASKEEDACRLIIPREVT
 IVEKADSSSVLPSPLSISTKSKMTFLFANLKDRDFLVQRISDFLQKTPSKQTGSSIGGTKASVSDPAPES
 LPTPQEASEPPASPSSPLSSPPSFSTQEIPPTSQGLLKVFQKNSPMEDLGAKGAKEKMEESWNIHFFEY
 GRGCMYRTAKTRELVLKGIPELREGELWLLFSGAWNEMVTHPGYYAELVEKSLGKYSLATEEIERDLHR
 SMPHEPAFQNELGIAALRRVLTAFAFRNPTIGYCQAMNIVTSVLLLYGSEEEAFWLLVALCERMLPDYYN
 TRVVGALVDQGI FEELTRDVL PRLSEKMQELGVISSISLSWFLTLFLSVMPEFSAVVIVDCFFYEGIKVI
 LQVALAVLDANVEQLLDNDGEAMTVLGRYLDNVVNKQISPPIPHLHALLTSGDPPVEVDIFDLLRV
 SYEKFSNL RADDIEQMRFKQRLKVIQSLEDTAKRSVRAIPGDIGFSIEELEDLYMVFKAHLASQYWGGN
 RSAAVHRDPSLPYLEQYRIDASQFREL FASLTPWACGSHTPVLAGRMFRLLDQNKDSLINFKEFVTGMSG
 MYHGDLTEKLGKALYKHLPPALIPEEAESALEAAHYFTEDSSSEASPLASDLDFLPWEAQALLQEQQEG
 SGNEDTPERREEKGTSPDYRHYLRMWAKEKEAQKETIKDLPKMNQEQFIELCKTLNMFSEDPMEQDLY
 HA IATVASLLLRIGEVGKKSALTTKKPRDGAHSGDPNSATEEDEPPTPKLHQDPTQEQPPAAGDRQAK
 ASGDMHLGKALQDSHIVIEGSGEGQGSPSLLLSDDET KDDMSMSSYSVSTGSLQCEDLTEDTVLVGGG
 ACSPTATSRAGGTVDTDWCISFEQILASILTESVLVNF FEKRVDIGLKIKDQKKVERQFSTSSDHEPPGV
 LG

TRTRPLEQKLI SEEDLAANDILDYKDDDDKV

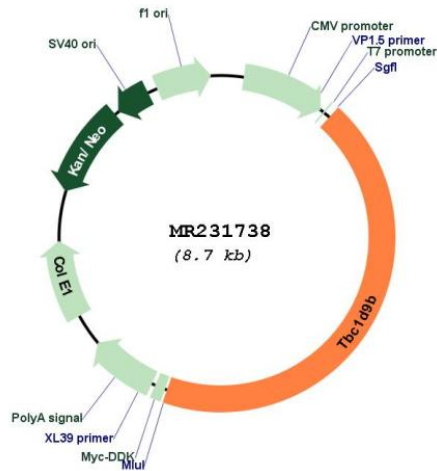
Restriction Sites:

SgfI-MluI

Cloning Scheme:



* The last codon before the Stop codon of the ORF

Plasmid Map:


ACCN: NM_001290759

ORF Size: 3786 bp

OTI Disclaimer: The molecular sequence of this clone aligns with the gene accession number as a point of reference only. However, individual transcript sequences of the same gene can differ through naturally occurring variations (e.g. polymorphisms), each with its own valid existence. This clone is substantially in agreement with the reference, but a complete review of all prevailing variants is recommended prior to use. [More info](#)

OTI Annotation: This clone was engineered to express the complete ORF with an expression tag. Expression varies depending on the nature of the gene.

Components: The ORF clone is ion-exchange column purified and shipped in a 2D barcoded Matrix tube containing 10ug of transfection-ready, dried plasmid DNA (reconstitute with 100 ul of water).

Reconstitution Method:

1. Centrifuge at 5,000xg for 5min.
2. Carefully open the tube and add 100ul of sterile water to dissolve the DNA.
3. Close the tube and incubate for 10 minutes at room temperature.
4. Briefly vortex the tube and then do a quick spin (less than 5000xg) to concentrate the liquid at the bottom.
5. Store the suspended plasmid at -20°C. The DNA is stable for at least one year from date of shipping when stored at -20°C.

RefSeq: [NM_001290759.1](#), [NP_001277688.1](#)

RefSeq Size: 5268 bp

RefSeq ORF: 3789 bp

Locus ID: 76795

UniProt ID: [Q5SVR0](#)

Cytogenetics: 11 B1.3

MW: 142.1 kDa

Gene Summary: May act as a GTPase-activating protein for Rab family protein(s).[UniProtKB/Swiss-Prot Function]