

Product datasheet for MR231731

Cyfp2 (NM_001252460) Mouse Tagged ORF Clone

Product data:

Product Type:	Expression Plasmids
Product Name:	Cyfp2 (NM_001252460) Mouse Tagged ORF Clone
Tag:	Myc-DDK
Symbol:	Cyfp2
Synonyms:	1500004I01Rik; 6430511D02Rik; AA930218; AU022376; mKIAA1168; Pir121
Mammalian Cell Selection:	Neomycin
Vector:	pCMV6-Entry (PS100001)
E. coli Selection:	Kanamycin (25 ug/mL)
ORF Nucleotide Sequence:	>MR231731 ORF sequence Red=Cloning site Blue=ORF Green=Tags(s)

TTTTGTAATACGACTCACTATAGGGCGGCCGGAATTCGTCGACTGGATCCGGTACCGAGGAGATCTGCC
GCC**CGATCGCC**

ATGACCACCCACGTCACCTTTGGAAGATGCCCTGTCCAACGTGGACCTGCTGGAGAACTGCCCTCCCAG
ACCAGCAGCCATGTATCGAGCCCCGCCATCCTCCATCATGTACCAGGCTAACTTTGACACGAACTTCGA
GGACAGGAATGCATTTGTACGGGCATTGCAAGGTACATTGAGCAGGCAACGGTCCACTCCAGCATGAAT
GAAATGCTGGAGGAGGGCCACGACTATGCAGTCATGCTGTACACCTGGCGCAGCTGCTCCGGGCCATCC
CGCAGGTGAAGTGAATGAGCAGCCCAATCGGGTCGAGATCTACGAGAAGACGGTGGAGGTGCTGGAGCC
AGAGGTACCAAGCTCATGAAGTTCATGTACTTTAGCGCAAGGCCATCGAGCGCTTCTGTAGCGAGGTG
AAGCGGCTGTGTACGCTGAGCGCAGGAAGGACTTTGTCTCTGAGGCCTACCTGTGACGCTGGGCAAGT
TCATCAACATGTTTCGCGGTCTTGGACGAGCTAAAGAACATGAAGTGCAGTGTCAAGAATGACCACTCTGC
CTACAAGAGAGCAGCACAGTTCCTAAGGAAGATGGCGGACCCCCAGTCCATCCAGGAATCTCAGAACCTG
TCCATGTTCTCGGCAATCACAACAGGATCACCCAGTGTCTTACCAGCAACTGGAAGTGATCCCGGGCT
ATGAGGAGCTGCTGGCAGACATTGTCAACATCTGTGTTGATTACTATGAGAATAAGATGTACCTGACGCC
CAGTAAAAAGCACATGTTGCTCAAGGTGATGGCTTTGGTCTCTATCTGATGGACGAAATGTCAGTAAC
ATTTACAAACTGGATGCCAAGAAGAGAATCAACCTTAGCAAAATTGATAAGTTTTTAAGCAGCTGCAGG
TGGTACCCCTTTTCGGCGACATGCAGATAGAGCTGGCCAGATACATTAAGACCAGTGTCTACTATGAAGA
GAACAAGTCCAAGTGGACATGCACTCAGAGCAGCATCAGCCCCAGTACAACATCTGTGAGCAGATGGTT
CAGATCCGGGATGATCACATCCGCTTCTCTGAGCTGGCTCGTACAGCAACAGCGAGGTGGTGACAG
GCTCAGGGCTGGACAGCCAGAAGTCGGATGAAGAGTACCGGGAGCTTTTTGACCTGGCCCTGCGAGGCT
GCAGCTTCTATCCAAGTGGAGTGCCCATGTGATGGAGGTGACTCTTGGAAAGCTGGTTACCCCCACAGAC
AAGTTCTGCAACAAGGACTGCCCGGCACCGGGAAGAGTACGAGAGAGCCACGCCTACAATTATACCA
GCGAGGAGAAGTTTGCCTTTGTGGAGGTGATTGCCATGATCAAGGGTTTGCAGGTGCTCATGGGAAGGAT
GGAGAGTGTCTCAACCAGGCCATCCGCAACACTATCTACGCAGCCCTGCAGGATTCGCCCAGGTGACG



[View online »](#)

CTGCGGGAGCCGTTGCGGCAAGCAGTTCGAAAGAAAAAGAATGTCCTTATCAGCGTTCTGCAAGCAATTC
 GAAAGACCATCTGTGACTGGGAGGGAGGCCGAGAGCCCCCAATGACCCATGCTTAAGAGGGGAGAAGGA
 CCCCAAAGGTGGCTTTGACATCAAGGTGCCCGCCGCTGTGTGGGTCCATCCAGCACACAGCTGTACATG
 GTGCGCACCATGCTTGAGTCACTCATCGCAGACAAGAGCGGCTCCAAGAAGACGCTCAGAAGCAGCCTGG
 ATGGCCCTATCGTCCTTGCCATAGAGGACTTCCACAAGCAGTCTTCTTTTTACACACCTGCTTAACAT
 CAGCGAGGCTCTCAGCAGTGTGTGACCTCTCCAGCTCTGGTCCGAGAATTCCTCTGGAGTTGACC
 ATGGGCCGGCAATCCAGTTCGATTGAGATGTCCATGCCCTGGATTCTAACGGACCATATTCTGGAAA
 CCAAAGAACCCTTCCATGATGGAGTATGTCTCTACCCCTTGGATCTGTACAACGACAGCGCCTACTATGC
 CCTCACCAAATTCAAAAAGCAGTTCCTGTATGACGAGATCGAAGCCGAGGTAAACCTGTGTTTTGATCAG
 TTTGTCTACAAGCTGGCTGACCAGATCTTCGCCTACTACAAAGCCATGGCCGGCAGTGTCTGCTGGATA
 AACGTTTTAGAGCTGAGTGAAGAACTATGGGGTATCATACCGTACCCGCCATCCAACCCTACGAGAC
 ACTGCTGAAGCAGAGACATGTCCAGCTGTTGGGGAGATCAATTGACTTGAACAGACTCATCACCCAGCGG
 ATCTCTGTGCCATGTACAAGTCTTGGACCAGGCCATCAGCCGCTTTGAGAGTGAAGACCTGACCTCCA
 TTGTGGAGCTGGAGTGGCTGCTGGAGATTAACCGACTCACACCCGACTCCTCTGTAAGCACATGACGCT
 AGACAGCTTCGATGCCATGTTCCGAGAAGCCAATCATAACGTGTCTGCCCTTACGGCCGCATCACCTG
 CATGTCTTCTGGGAGCTGAACCTTGGACTTCTCCCAACTACTGTATAATGGATCCACAACCGTTTTG
 TCCGAAGTGCATCCCTTTCACCAAGAACCACACGGGATAAGCCCGCAATGTCCAGCCTTATTACCT
 CTATGGATCCAAGCCTCTCAACATTGCCTACAGCCACATCTATAGCTCCTACCGAACTTTGTGGGGCC
 CCTCACTTCAAGACCATCTGCAGACTGTTGGGCTACCAGGGCATCGCTGTGGTATGGAGGAACTGCTGA
 AAATCGTCAAGAGCTTGTCCAAGGCACCATCTGCAGTACGTGAAGACGCTCATAGAGGTGATGCCGAA
 AATCTGTGCTTGCCTCGGCACGAGTACGGCTCTCCAGGAATCCTGGAGTCTTCCACCACCAACTGAAG
 GACATCATCGAGTATGCAGAACTCAAAACAGACGTGTTCCAGAGCCTCCGAGAGGTGGGCAACGCCATCC
 TGTCTGCCTCCTCATAGAGCAAGCTCTGTCTCAGGAGGAAGTCTGTGATTTGCTCCATGCTGCACCCTT
 CCAAACATTCTGCCCGAGTCTACATCAAAGAGGGGGAGCGCCTGGAAGTCCGGATGAAGCGCCTCGAG
 GCCAAGTACGCCCACTTACCTGGTTCCTGATAGAGCGGCTGGGGACGCCTCAGCAAATCGCCATCG
 CTCGGGAGGGTGACCTGCTGACCAAGGAGCGGCTCTGCTGCGGCCTGTCCATGTTTGAGGTCATCCTGAC
 CCGAATCCGGAGCTACCTGCAGGACCCCATCTGGAGGGGCCCGCCACCCACCAATGGCGTCATGCATGTG
 GATGAGTGTGGAGTTTACCCGGCTGTGGAGTGCATGCAGTTTGTCTACTGTATCCCTGTGGGGACCA
 ACGAGTTCACAGCTGAGCAGTGTTCGGTGACGGCTTGAAGTGGCCGGCTGCTCCATCATTGTCTTGCT
 GGGCCAGCAGCGCGCTTTGACCTGTTGACTTCTGTTATCATCTGCTGAAGGTGCAGAGGCAGGACGGG
 AAGGATGAGATCATTAAAGATGTGCCTCTGAAGAAGATGGCTGACCGCATCAGGAAGTACCAGATCTTGA
 ACAATGAGGTTTTTGCCATCCTGAACAAGTACATGAAGTCTGTAGAGACAGACAGTTCACCGTAGAGCA
 TGTGCGCTGCTTCCAGCCCCAATCCACCAGTCATTGGCCACCACCTGC

ACGCGTACGCGGCCGCTCGAGCAGAACTCATCTCAGAAGAGGATCTGGCAGCAAATGATATCCTGGATT
 ACAAGGATGACGACGATAAGGTTAA

Protein Sequence:

>MR231731 protein sequence
 Red=Cloning site Green=Tags(s)

MTTHVTLEDALSNVDLLEELPLPDQQPCIEPPSSIMYQANFDTNFEDRNAFVTGIARYIEQATVHSSMN
 EMLEEGHDYAVMLYTWRSRRAIPQVKCNEQPNRVEIYEKTVLEVLEPEVTKLMKFMFQRKAIERFCSEV
 KRLCHAERRKDFVSEAYLLTLGKFINMFAVLDELKNMKCSVKNDHSAYKRAAQFLRKMADPQSIQESQNL
 SMFLANHNRIITQCLHQQLEVIPGYEELLADIVNICVDYENKMYLTPSEKHMLLKVMGFGLYLDGNGVSN
 IYKLDAKKRINLSKIDKFFKQLQVVPLFGDMQIELARYIKTSAHYEENKSKWTCTQSSISPOYNICEQMV
 QIRDDHIRFISELARYSNSEVVTGSGLDQSQSDEEYRELFDLALRGLQLLSKWSAHVMEVYSWKLVHPTD
 KFCNKDCPGTAAEYERATRYNYTSEEKFAFVEVIAMIKGLQVLMGRMESVFNQAIRNTIYAALQDFAQVT
 LREPLRQAVRKKKNVLISVLQAIRKTI CDWEGGREPPNDPCLRGEKDPKGGFDIKVPRRAVGPSSTQLYM
 VRTMLES LIADKSGSKTLRSSL DGPVLAIEDFHKQSSFFTHLLNI SEALQCCDLSQLWFREFFLELT
 MGRRIQFPIEMSPWILTDHILETKEPSMMEYVLYPLDLYNDSAYYALTKFKKQFLYDEIEAEVNLCFDQ
 FVYKLDQIFAYYKAMAGSVLLDKRFRAECKNYGVIIPYPPSNRYETLLKQRHVQLLGRSIDLNRLITQR
 ISAAMYKSLDQAI SRFESEDLTSIVELEWLL E INRLTHRLLCKHMTLDSFDAMFREANHNVSAPYGRITL
 HVFWELNFDLFPNYCYNGSTNRFVRTAIPFTQEPQDKPANVQPYLYGSKPLNIAYSHIYSSYRNFVGP
 PHFKTICRLLGYQGI AVVMEELLKIVKSL LQGTILQYVKTLIEVMPKICRLPRHEYGSPGILEFFHHQLK
 DIIEYAEKTDV FQSLREVGNA ILFCLLIEQALSQEEVCDLLHAAPFQNILPRVYIKEGERLEVRMKRLE
 AKYAPLHLVPLIERLGT PQQIAIAREGDLLTKERLCCGLSMFEVILTRIRSYLQDPIWRGPPPTNGVMHV
 DECVEFHRLWSAMQFVYCI PVGTNEFTAECQCFGDGLNWAGCSII VLLGQQRFDLDFCYHLLKVQRQDG
 KDEI IKNVPLKKMADRIRKYQILNNEVFAILNKYMKSVETDSSTVEHVRCFQPPIHQSLATTC

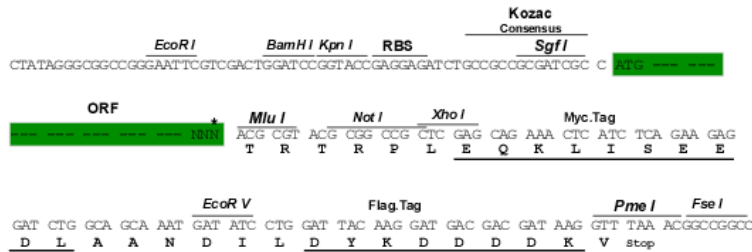
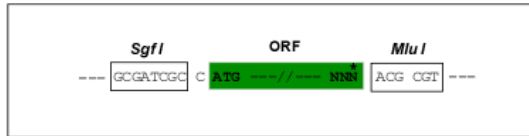
TRTRPLEQKLISEEDLAANDILDYKDDDDKV

Restriction Sites:

SgfI-MluI

Cloning Scheme:

Cloning sites used for ORF Shuttling:



* The last codon before the Stop codon of the ORF

ACCN:

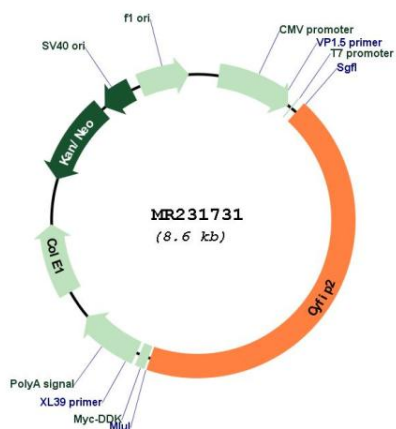
NM_001252460

ORF Size:

3759 bp

OTI Disclaimer:	The molecular sequence of this clone aligns with the gene accession number as a point of reference only. However, individual transcript sequences of the same gene can differ through naturally occurring variations (e.g. polymorphisms), each with its own valid existence. This clone is substantially in agreement with the reference, but a complete review of all prevailing variants is recommended prior to use. More info
OTI Annotation:	This clone was engineered to express the complete ORF with an expression tag. Expression varies depending on the nature of the gene.
Components:	The ORF clone is ion-exchange column purified and shipped in a 2D barcoded Matrix tube containing 10ug of transfection-ready, dried plasmid DNA (reconstitute with 100 ul of water).
Reconstitution Method:	<ol style="list-style-type: none">1. Centrifuge at 5,000xg for 5min.2. Carefully open the tube and add 100ul of sterile water to dissolve the DNA.3. Close the tube and incubate for 10 minutes at room temperature.4. Briefly vortex the tube and then do a quick spin (less than 5000xg) to concentrate the liquid at the bottom.5. Store the suspended plasmid at -20°C. The DNA is stable for at least one year from date of shipping when stored at -20°C.
RefSeq:	NM_001252460.1 , NP_001239389.1
RefSeq Size:	6677 bp
RefSeq ORF:	3762 bp
Locus ID:	76884
UniProt ID:	Q5SQX6
Cytogenetics:	11 B1.1
MW:	145.7 kDa
Gene Summary:	Part of the WAVE1 complex that regulates actin filament reorganization via its interaction with the Arp2/3 complex (By similarity). Involved in T-cell adhesion and p53-dependent induction of apoptosis (By similarity). Does not bind RNA. As component of the WAVE1 complex, required for BDNF-NTRK2 endocytic trafficking and signaling from early endosomes (PubMed:27605705).[UniProtKB/Swiss-Prot Function]

Product images:



Circular map for MR231731