

## Product datasheet for MR231730

### Cyfp2 (NM\_001252459) Mouse Tagged ORF Clone

#### Product data:

Product Type:	Expression Plasmids
Product Name:	Cyfp2 (NM_001252459) Mouse Tagged ORF Clone
Tag:	Myc-DDK
Symbol:	Cyfp2
Synonyms:	1500004I01Rik; 6430511D02Rik; AA930218; AU022376; mKIAA1168; Pir121
Mammalian Cell Selection:	Neomycin
Vector:	pCMV6-Entry (PS100001)
E. coli Selection:	Kanamycin (25 ug/mL)
ORF Nucleotide Sequence:	>MR231730 representing NM_001252459 Red=Cloning site Blue=ORF Green=Tags(s)

TTTTGTAATACGACTCACTATAGGGCGGCCGGAATTCGTCGACTGGATCCGGTACCGAGGAGATCTGCC  
GCC**CGATCGCC**

ATGACCACCCACGTCACCTTTGGAAGATGCCCTGTCCAACGTGGACCTGCTGGAGAACTGCCCTCCCAG  
ACCAGCAGCCATGTATCGAGCCCCGCCATCCTCCATCATGTACCAGGCTAACTTTGACACGAACTTCGA  
GGACAGGAATGCATTTGTACGGGCATTGCAAGGTACATTGAGCAGGCAACGGTCCACTCCAGCATGAAT  
GAAATGCTGGAGGAGGGCCACGACTATGCAGTCATGCTGTACACCTGGCGCAGCTGCTCCGGGCCATCC  
CGCAGGTGAAGTCAATGAGCAGCCCAATCGGGTCGAGATCTACGAGAAGACGGTGGAGGTGCTGGAGCC  
AGAGGTCACCAAGCTCATGAAGTTCATGTACTTTAGCGCAAGGCCATCGAGCGCTTCTGTAGCGAGGTG  
AAGCGGCTGTGTACGCTGAGCGCAGGAAGGACTTTGTCTCTGAGGCCTACCTGTGACGCTGGGCAAGT  
TCATCAACATGTTTCGCGGTCTTGGACGAGCTAAAGAACATGAAGTGCAGTGTCAAGAATGACCACTCTGC  
CTACAAGAGAGCAGCACAGTTCCTAAGGAAGATGGCGGACCCCAAGTCCATCCAGGAATCTCAGAACCTG  
TCCATGTTCTCGGCAATCACAACAGGATCACCCAGTGTCTTACCAGCAACTGGAAGTGATCCCGGGCT  
ATGAGGAGCTGCTGGCAGACATTGTCAACATCTGTGTTGATTACTATGAGAATAAGATGTACCTGACGCC  
CAGTAAAAAGCACATGTTGCTCAAGGTGATGGCTTTGGTCTCTATCTGATGGACGAAATGTCAGTAAC  
ATTTACAAACTGGATGCCAAGAAGAGAATCAACCTTAGCAAAATGATAAGTTTTTAAGCAGCTGCAGG  
TGGTACCCCTTTTCGGCGACATGCAGATAGAGCTGGCCAGATACATTAAGACCAGTGTCTACTATGAAGA  
GAACAAGTCCAAGTGGACATGCACTCAGAGCAGCATCAGCCCCAGTACAACATCTGTGAGCAGATGGTT  
CAGATCCGGGATGATCACATCCGCTTCTCTGAGCTGGCTCGTACAGCAACAGCGAGGTGGTGACAG  
GCTCAGGGCTGGACAGCCAGAAGTCGGATGAAGAGTACCGGGAGCTTTTTGACCTGGCCCTGCGAGGCC  
GCAGCTTCTATCCAAGTGGAGTGCCCATGTGATGGAGGTGACTCTTGGAAAGCTGGTTACCCCCACAGAC  
AAGTTCTGCAACAAGGACTGCCCGGCCACCGGGAAGAGTACGAGAGAGCCACGCCTACAATTATACCA  
GCGAGGAGAAGTTTGCCTTTGTGGAGGTGATTGCCATGATCAAGGGTTTGCAGGTGCTCATGGGAAGGAT  
GGAGAGTGTCTCAACAGGCCATCCGCAACACTATCTACGACGCCCTGCAGGATTCGCCAGGTGACG



[View online »](#)

CTGCGGGAGCCGTTGCGGCAAGCAGTTCGAAAGAAAAAGAATGTCCTTATCAGCGTTCTGCAAGCAATTC  
GAAAGACCATCTGTGACTGGGAGGGAGGCCGAGAGCCCCCAATGACCCATGCTTAAGAGGGGAGAAGGA  
CCCCAAAGGTGGCTTTGACATCAAGGTGCCCGCCGCTGTGTGGGTCCATCCAGCACACAGCTGTACATG  
GTGCGCACCATGCTTGAGTCACTCATCGCAGACAAGAGCGGCTCCAAGAAGACGCTCAGAAGCAGCCTGG  
ATGGCCCTATCGTCCTTGCCATAGAGGACTTCCACAAGCAGTCTTCTTTTTACACACCTGCTTAACAT  
CAGCGAGGCTCTCAGCAGTGTGTGACCTCTCCAGCTCTGGTCCGAGAATTCCTCTGGAGTTGACC  
ATGGGCCGGCGAATCCAGTTCCTGATTGAGATGTCCATGCCCTGGATTCTAACGGACCATATTCTGGAAA  
CCAAAGAACCCTTCCATGATGGAGTATGTCTCTACCCCTTGGATCTGTACAACGACAGCGCCTACTATGC  
CCTCACCAAATTCAAAAAGCAGTTCCTGTATGACGAGATCGAAGCCGAGGTAAACCTGTGTTTTGATCAG  
TTTGTCTACAAGCTGGCTGACCAGATCTTCGCCTACTACAAAGCCATGGCCGGCAGTGTCTGTGGATA  
AACGTTTTAGAGCTGAGTGAAGAACTATGGGGTATCATACCGTACCCGCCATCCAACCGCTACGAGAC  
ACTGCTGAAGCAGAGACATGTCCAGCTGTTGGGGAGATCAATTGACTTGAACAGACTCATCACCCAGCGG  
ATCTCTGTGCCATGTACAAGTCTTGGACCAGGCCATCAGCCGCTTTGAGAGTGAAGACCTGACCTCCA  
TTGTGGAGCTGGAGTGGCTGCTGGAGATTAACCGACTCACACCCGACTCCTCTGTAAGCACATGACGCT  
AGACAGCTTCGATGCCATGTTCCGAGAAGCCAATCATAACGTGTCTGCCCTTACGGCCGCATCACCTG  
CATGTCTTCTGGGAGCTGAACCTTGGACTTCTCCCAACTACTGTATAATGGATCCACAACCGTTTTG  
TCCGAAGTGCATCCCTTTCACCAAGAACCACACGGGATAAGCCCGCAATGTCCAGCCTTATTACCT  
CTATGGATCCAAGCCTCTCAACATTGCCTACAGCCACATCTATAGCTCCTACCGAACTTTGTGGGGCC  
CCTCACTTCAAGACCATCTGCAGACTGTTGGGCTACCAGGGCATCGCTGTGGTATGGAGGAACTGCTGA  
AAATCGTCAAGAGCTTGTCCAAGGCACCATCTGCAGTACGTGAAGACGCTCATAGAGGTGATGCCGAA  
AATCTGTGCTTGCCTCGGCACGAGTACGGCTCTCCAGGAATCCTGGAGTTCTTCCACCACCAACTGAAG  
GACATCATCGAGTATGCAGAACTCAAAACAGACGTGTTCCAGAGCCTCCGAGAGGTGGGCAACGCCATCC  
TGTTCTGCCTCCTCATAGAGCAAGCTCTGTCTCAGGAGGAAGTCTGTGATTTGCTCCATGCTGCACCCTT  
CCAAAACATTCTGCCCGAGTCTACATCAAAGAGGGGGAGCGCCTGGAAGTCCGGATGAAGCGCCTCGAG  
GCCAAGTACGCCCACTTACCTGGTTCCTGATAGAGCGGCTGGGGACGCCTCAGCAAATCGCCATCG  
CTCGGGAGGGTGACCTGCTGACCAAGGAGCGGCTCTGCTGCGGCCTGTCCATGTTTGAGGTATCCTGAC  
CCGAATCCGGAGCTACCTGCAGGACCCCATCTGGAGGGGCCGCCACCCACCAATGGCGTCATGCATGTG  
GATGAGTGTGGAGTTTACCGGCTGTGGAGTGCATGCAGTTTGTCTACTGTATCCCTGTGGGGACCA  
ACGAGTTCACAGCTGAGCAGTGTTCGGTGACGGCTTGAAGTGGCCGGCTGCTCCATCATTGTCTTGCT  
GGGCCAGCAGCGCGCTTTGACCTGTTGACTTCTGTTATCATCTGCTGAAGGTGCAGAGGCAGGACGGG  
AAGGATGAGATCATTAAAGATGTGCCTCTGAAGAAGATGGCTGACCGCATCAGGAAGTACCAGATCTTGA  
ACAATGAGGTTTTTGCCATCCTGAACAAGTACATGAAGTCTGTAGAGACAGACAGTTCACCGTAGAGCA  
TGTGCGCTGCTTCCAGCCCCAATCCACCAGTCATTGGCCACCACCTGC

ACGCGTACGCGGCCGCTCGAGCAGAACTCATCTCAGAAGAGGATCTGGCAGCAAATGATATCCTGGATT  
ACAAGGATGACGACGATAAGGTTAA

**Protein Sequence:** >MR231730 representing NM\_001252459  
Red=Cloning site Green=Tags(s)

MTTHVTLEDALSNVDLLEELPLPDQQPCIEPPSSIMYQANFDTNFEDRNAFVTGIARYIEQATVHSSMN  
 EMLEEGHDYAVMLYTWRSRRAIPQVKCNEQPNRVEIYEKTVLEVLEPEVTKLMKFMFQRKAIERFCSEV  
 KRLCHAERRKDFVSEAYLLTLGKFINMFAVLDELKNMKCSVKNDHSAYKRAAQFLRKMADPQSIQESQNL  
 SMFLANHNRIQTCLHQQLEVIPGYEELLADIVNICVDYENKMYLTPSEKHMLLKVMGFGLYLDGNGVSN  
 IYKLDAKKRINLSKIDKFFKQLQVVPFLFGDMQIELARYIKTSAHYEENKSKWTCTQSSISPOYNICEQMV  
 QIRDDHIRFISELARYSNSEVVTGSGLDQKSDEEYRELFDLALRGLQLLSKWSAHVMEVYSWKLVHPTD  
 KFCNKDCPGTAAEYERATRYNYTSEEKFAFVEVIAMIKGLQVLMGRMESVFNQAIRNTIYAALQDFAQVT  
 LREPLRQAVRKKKNVLISVLQAIRKTI CDWEGGREPPNDPCLRGEKDPKGGFDIKVPRRAVGPSSTQLYM  
 VRTMLES LIADKSGSKTLRSSLDGPIVLAIEDFHKQSSFFTHLLNISEALQQCCDLSQLWFREFFLELT  
 MGRRIQFPIEMSPWILTDHILETKEPSMMEYVLYPLDLYND SAYYALTKFKKQFLYDEIEAEVNLCFDQ  
 FVYKLDQIFAYYKAMAGSVLLDKRFRAECKNYGVIIPYPPSNRYETLLKQRHVQLLGRSIDLNRLITQR  
 ISAAMYKSLDQAI SRFESEDLTSIVLEWLL E INRLTHRLLCKHMTLDSFDAMFREANHNVSAPYGRITL  
 HVFWELNFDLFPNYCYNGSTNRFVRTAIPFTQEPQDKPANVQPYLYGSKPLNIAYSHIYSSYRNFVGP  
 PHFKTICRLLGYQGI AVVMEELLKIVKSL LQGTILQYVKT LIEVMPKICRLPRHEYGSPGILEFFHHQLK  
 DIIEYAE LKTDV FQSLREVGNA ILFCLLIEQALSQEEVCDLLHAAPFQNILPRVYIKEGERLEVRMKRLE  
 AKYAPLHLVPLIERLGT PQQIAIAREGDLLTKERLCCGLSMFEVILTRIRSYLQDPIWRGPPPTNGVMHV  
 DECVEFHRLWSAMQFVYCI PVGTNEFTAECQCFGDGLNWAGCSII VLLGQQRFDLDFCYHLLKVQRQDG  
 KDEI IKNVPLKKMADRIRKYQILNNEVFAILNKYMKSVETDSSTVEHVRCFQPPIHQSLATTC

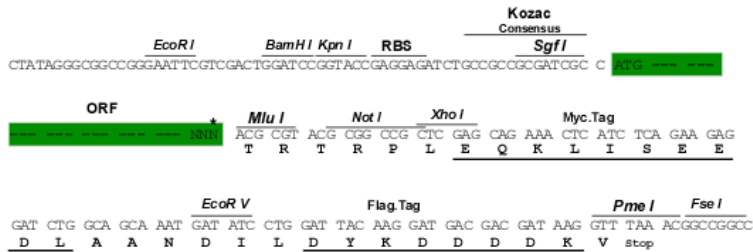
TRTRPLEQKLISEEDLAANDILDYKDDDDKV

**Restriction Sites:**

SgfI-MluI

**Cloning Scheme:**

Cloning sites used for ORF Shuttling:



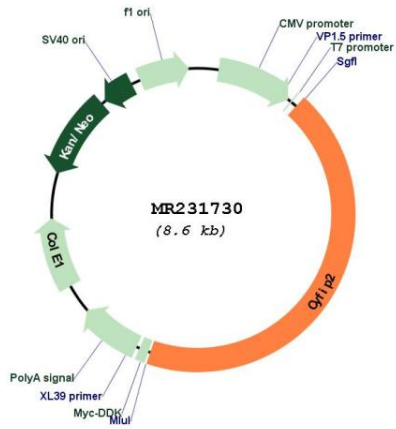
\* The last codon before the Stop codon of the ORF

**ACCN:** NM\_001252459

**ORF Size:** 3759 bp

<b>OTI Disclaimer:</b>	The molecular sequence of this clone aligns with the gene accession number as a point of reference only. However, individual transcript sequences of the same gene can differ through naturally occurring variations (e.g. polymorphisms), each with its own valid existence. This clone is substantially in agreement with the reference, but a complete review of all prevailing variants is recommended prior to use. <a href="#">More info</a>
<b>OTI Annotation:</b>	This clone was engineered to express the complete ORF with an expression tag. Expression varies depending on the nature of the gene.
<b>Components:</b>	The ORF clone is ion-exchange column purified and shipped in a 2D barcoded Matrix tube containing 10ug of transfection-ready, dried plasmid DNA (reconstitute with 100 ul of water).
<b>Reconstitution Method:</b>	<ol style="list-style-type: none"><li>1. Centrifuge at 5,000xg for 5min.</li><li>2. Carefully open the tube and add 100ul of sterile water to dissolve the DNA.</li><li>3. Close the tube and incubate for 10 minutes at room temperature.</li><li>4. Briefly vortex the tube and then do a quick spin (less than 5000xg) to concentrate the liquid at the bottom.</li><li>5. Store the suspended plasmid at -20°C. The DNA is stable for at least one year from date of shipping when stored at -20°C.</li></ol>
<b>RefSeq:</b>	<a href="#">NM_001252459.1</a> , <a href="#">NP_001239388.1</a>
<b>RefSeq Size:</b>	6622 bp
<b>RefSeq ORF:</b>	3762 bp
<b>Locus ID:</b>	76884
<b>UniProt ID:</b>	<a href="#">Q5SQX6</a>
<b>Cytogenetics:</b>	11 B1.1
<b>MW:</b>	145.7 kDa
<b>Gene Summary:</b>	Part of the WAVE1 complex that regulates actin filament reorganization via its interaction with the Arp2/3 complex (By similarity). Involved in T-cell adhesion and p53-dependent induction of apoptosis (By similarity). Does not bind RNA. As component of the WAVE1 complex, required for BDNF-NTRK2 endocytic trafficking and signaling from early endosomes (PubMed:27605705).[UniProtKB/Swiss-Prot Function]

Product images:



Circular map for MR231730