

Product datasheet for MR231702

Stag2 (NM_021465) Mouse Tagged ORF Clone

Product data:

Product Type: Expression Plasmids
Product Name: Stag2 (NM_021465) Mouse Tagged ORF Clone
Tag: Myc-DDK
Symbol: Stag2
Synonyms: 9230105L23Rik; B230112I07Rik; SA-2; SAP2
Vector: pCMV6-Entry (PS100001)
E. coli Selection: Kanamycin (25 ug/mL)
Cell Selection: Neomycin
ORF Nucleotide Sequence: >MR231702 representing NM_021465
Red=Cloning site Blue=ORF Green=Tags(s)

TTTTGTAATACGACTCACTATAGGGCGCCGGAATTCGTCGACTGGATCCGGTACCGAGGAGATCTGCC
GCC**GCGATCGCC**

ATGATAGCAGCTCCAGAAATACCAACTGATTTTAACTACTGCAGGAGTCAGAGACACACTTTTCTTCTG
ACACAGATTTTGAAGACATTGAAGGAAAAATCAGAAGCAAGGCAAAGGCAAACTTGTAAGGAAAGGCAA
AAAGGGTCCAGCAGAAAAGGGTAAAAGTGGAAATGGAGGAGGAAAACCTCCTTCTGGCTCAAACCGAATG
AACGGTCATCATCAACAGAATGGAGTTGAAAACATGATGTTGTTGCGAAGTTGTTAAAATGGCAAGAGTG
CTATGCAGTCGGTGGTAGATGACTGGATCGAGTCTACAAGCATGACCGGACATAGCGCTTCTTACCT
TATCAATTTCTTTATTTCAGTGCTCAGGCTGCAAAGGAGTCGTACAGCAGAGATGTTTCAGACATATGCAG
AACTCTGAGATAATTCGAAAAATGACAGAAGAATTTGACGAGGATAGTGGGGATTACCCACTTACCATGG
CTGGTCTCAGTGAAGAAGTTCAAGTCCAGCTTCTGTGAGTTTCATTGGTGTGTTAGTACGGCAGTGTC
ATACAGTATCATATATGATGAGTACATGATGGATACTGTCATTTCACTTCTTACTGGATTGTCTGACTCC
CAAGTCAGAGCATTTCGACATACAAGCACCCCTGGCAGCTATGAAGTTGATGACTGCTTTGGTAAATGTGG
CACTAAATCTTAGCATTAAATATGGATAAACACAAAGACAGTACGAGGCAGAACGGAATAAAATGATTGG
AAAACGAGCTAACGAAAGGCTAGAACTCCTGTTACAAAAGCGTAAAGAGCTTCAGGAAAAATCAAGATGAG
ATAGAAAATATGATGAATGCAATATTTAAAGGAGTGTGTTGATACATAGATACAGGGATGCAATAGCTGAAA
TCAGAGCTATATGCATTGAAGAGATTGGCATTGGATGAAGATGTATAGTATGATGCCTTCTTAATGACAG
CTATTTAAAAATGTTGGTTGGACTATGCATGATAAGCAAGGTGAAGTCAGACTCAAATGTCTTACTGCT
TTACAAGGGCTTTACTATAACAAAGAATTAATTCCAAAGTGAAGTCTTTACCAGTCGATTCAAGGATA
GAATTGTGCTATGACCTTGACAAAGAATATGATGTTGCAGTACAAGCAATAAAGTTACTCACTCTTGT
TTTACAGAGTAGTGAAGAAGTTCTAACTGCAGAAGATTGTAAAAATGTCTATCATCTGGTTTATTACGCT
CACCGCCAGTAGCAGTTGCAGCTGGAGAATTTCTCTACAAAAGCTCTTCAGCCGAGAGACCCAGAAG
AGGATGGCTGATGAAAAGAAGGGAAGGCAAGGCCCAATGCCAACCTTGTGAAGACTTTGGTGTTTTT
CTTTTTGAAAAGTGAATTACACGAGCATGCAGTTACCTTGTGGACAGCATGTGGGATTGTGCTACTGAG
CTCCTGAAAGACTGGAAATGATGAATAGCTTGTATTAGAAGAGCCTCTTAGTGGAGAGGAAGCTCAA



CAGACAGACAAGAGAGTGCTTTGATTGAAATAATGCTTTGTA CTATTAGACAAGCAGCTGAATGTCATCC
TCCCGTGGGAAGAGGGACAGGAAAAAGGGTGCTGACAGCAAAGGAGAAGAAGACACAGTTGGATGACAGA
ACAAGAATCACTGAGCTGTTTGCTGTGGCCCTCCGCAGTTATTAGCTAAATACTCTGTAGATGCAGAAA
AGGTGACCAATTTGTTGCAGTTACCTCAGTACTTTGATTTGGAGATATACACCACTGGACGATTAGAAAA
GCATTTGGATGCCTTATTGCGCCAGATCCGAAATATTGTAGAGAAGCACACAGACAGATGTTTTGGAA
GAAGTCAGCTGATTGATGAAGTGGCAGATAAATTTAACCGGCTTCTTGAAGATTTCTGCAAGAGGGAGA
AGAACCTGATGAAGATGACGCATATCAGGTATTGTCAACATTGAAGAGGATCACTGCTTTTCATAATGCT
CATGATCTTTCAAAGTGGGATTTGTTCCGTTGTAATTACAACTCTTGA AAAACCGGAATCGAAAATGGAG
ATATGCCTGAGCAGATTGTTATTCACGCACTGCAGTGTGCTCACTATGTAATCCTTTGGCAGCTTGCTAA
GATCACTGAAAGCACGTCTACAAAGGAGGACTTACTGCGCTTAAAGAAACAGATGAGGGTATTTGCCAG
ATATGTCAGCATTACTTGACCAACGTGAATACTACTGTTAAAGAACAGGCCTTCACTATTCTGTGTGACA
TTTTGATGATCTTCAGTCACCAGATTATGTCTGGAGGGCGTGACATGTTAGAGCCATTAGTTTATACTCC
TGATTCTTCATTGCACTGAGTTGCTCAGCTTATTTTGGATCATGTCTTCATTGAACAGGATGATGAT
AGTAATAGTGCAGATGGTCAGCAAGAGGATGAAGCCAGCAAATTTGAAGCTTTGCACAAGAGGAGAAAT
TACTTGCAGCATTGTGTAAGCTAATTGTATATACCGTGGTGGAGATGAACACAGCTGCAGATATCTTCAA
GCAGTATATGAAGTATTATAATGATTATGGCGATATCATCAAAGAAACAATGAGTAAAACAAGGCAGATT
GACAAAATTCAGTGTGCTAAGACCTTATTCTCAGTTTGCAGCAGCTTTTAAATGAGATGATACAAGAGA
ATGGCTATAATTTTGATAGATCATCCTCAACATTTAGTGGCATAAAAGA AACTTGCTCGGCGTTTTGCTTT
AACTTTTGGACTTGATCAATTGAAAACAGAGAAGCCATTGCCATGCTCCACAAAGATGGTATAGAATTT
GCTTTTAAAGGAGCCTAATCCACAAGGGGAGAGCCATCCACCTTAAACTTGGCATTCTTGATATTCTCA
GTGAATTTTCTTCTAAACTGCTCCGACAGGATAAAAGAACAGTGTATGTTTATTTGAAAAGTTCATGAC
CTTTGATGTCAGTCCGAAGAGAAGATGTATGGCTTCTCTGATGTCTTACCGAAATTTCTTGCTAGCT
GGTGGTGTGATGATACTATGTCAGTCATTAGTGAATGAGCAGTCGGGGATCAACTGTACGGAGTAAAA
AATCAAACCATCTACAGGAAAGCGAAAAGTGGTTGAAGGCATGCAACTAGCACTCCCTGAAGAAAGCAG
TAGCAGTGACAGTATGTGGTTGAGCAGAGAGCAAACACTGCACACCCCTGTGATGATGCAGACACCACAG
CTCACCTCCACTATTATGAGAGAACCGAAAAGGTTACGGCCTGAAGATAGCTTCA TGAGTGTCTATCCGA
TGCAGGCAGAACCCATCAAACGCCTCTGGATTATAATCGGCGTGGTACAAGCCTAATGGAAGATGATGA
AGAGCCAATTGTTGAAGATGTTATGATGTCCTCAGAAGGAAGGATTGAGGATCTTAAATGAGGGAATGGAC
TTTGACACCATGGATATAGACTTGCCACCATCAAAGAATAGAAGAGAGAGAACAGA AACTGAAGCCCGATT
TCTTTGATCCAGCTTCAATTATGGATGAATCAGTCTTGGGGTGTCAATGTTT

ACGCGTACGCGGCGCTCGAGCAGAACTCATCTCAGAAGAGGATCTGGCAGCAAATGATATCCTGGATT
ACAAGGATGACGACGATAAGGTTTAA

Protein Sequence: >MR231702 representing NM_021465
 Red=Cloning site Green=Tags(s)

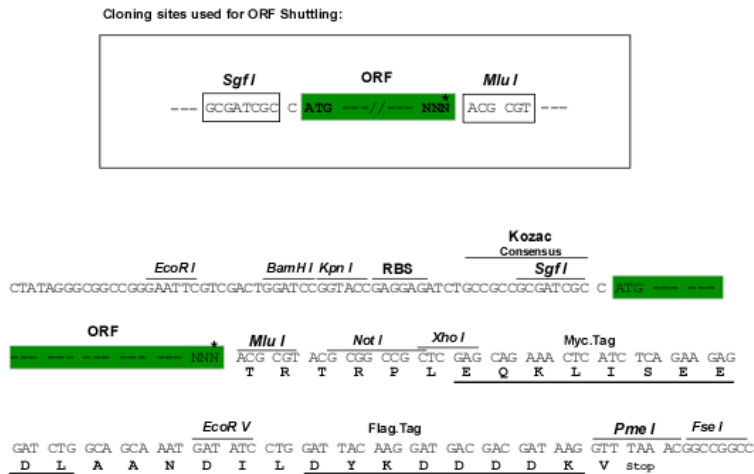
MIAAPEIPTDFNLLQESETHFSSDTDFEDIEGKNQKQGKGTCKKGGKPAEKGKSGNGGGKPPSGSNRM
 NGHHQNGVENMMLFEVVKMGKSAMQSVVDDWIESYKHDRDIALLDLINFFIQCSGCKGVVTAEMFRHMQ
 NSEIIRKMTTEEFDEDSGDYPLTMAGPQWKFKSSFCEFIGVLVRQCQYSIIYDEYMMDTVISLLTGLSDS
 QVRAFRTSTLAAMKLMTALVNVALNLSINMDNTQRQYEAERNKMI GK RANERLELLLQKRKELQENQDE
 IENMMNAIFKGVFVHRYRDAIAEIRAICIEEIGIWMKMYSDAFLNDSYLKYVGTWMDKQGEVRLKCLTA
 LQGLYYNKELNSKLELFTSRFKDRIVSMTLDKEYDVAVQAIKLLTLVLQSSEEVLTAEDCENVYHLVYSA
 HRPVAVAAAGEFLYKFLSRRDPEEDGLMKRRRQGPANLVKTLVFFLESELHEHAAYLVDSMWDCAE
 LLKDWECMNSLLLEPLSGEEALTDRQESALIEIMLCTIRQAAECHPPVGRGTGKRVLTAKKTKLDDR
 TRITELFAVALPQLLAKYSVDAEKVTNLLQLPQYFDLEIYTTGRLEKHL DALLRQIRNIVEKHTD TDVLE
 ACSKTYHALCNEEFTIFNRVDIRSQLIDELADKFNRLLEDFLQEGEEDDDAYQVLSTLKRTITAFHNA
 HDLSKDWLFACNYKLLKGTIENGDMPEQIVIHALQCAHYVILWQLAKITESTSTKEDLLRLKQMRVFCQ
 ICQHLYLTNVNTTVKEQAF TILCDILMIFSHQIMSGGRDML EPLVYTPDSSLQSELLSFILDHVFIEQDDD
 SNSADGQQEDEASKIEALHKRRNLLAAFCKLIVYTVVEMNTAADIFKQYMKYYNDYGDIIKETMSKTRQI
 DKIQCAKTLILSLQQLFNEMIQENGYNFDRSSSTFSGIKELARRFALTFGLDQLKTREAIAMLHKDGI EF
 AFKEPNPQGESHPPLNLAFLDILSEFSSKLLRQDKRTVYVYLEKFMFTFQMSLRREDVWLPLMSYRNSLLA
 GGDDDTMSVISGMSRRGSTVRSKSKPSTGKRKVVVEGMQLALPEESSSDSMWLSREQTLHTPVMMQTPQ
 LTSTIMREP KRLRPEDSFMSVYPMQAEHHQTPLDYNRRGTSLMEDDEEPIVEDVMMSSSEGRIEDLNEGMD
 FDTMDIDLPPSKNRRRETELKPDFDPASIMDESVLGVSMF

TRTRPLEQKLISEEDLAANDILDYKDDDDKV

Restriction Sites:

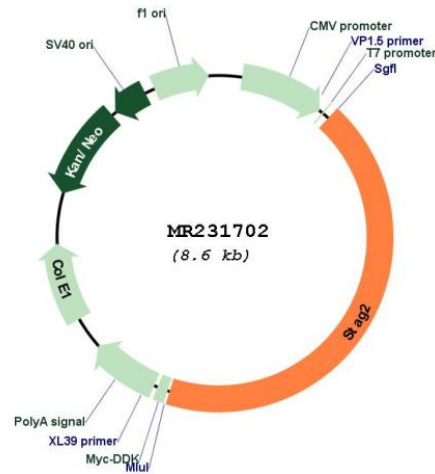
Sgfl-MluI

Cloning Scheme:



* The last codon before the Stop codon of the ORF

Plasmid Map:



ACCN: NM_021465

ORF Size: 3693 bp

OTI Disclaimer: The molecular sequence of this clone aligns with the gene accession number as a point of reference only. However, individual transcript sequences of the same gene can differ through naturally occurring variations (e.g. polymorphisms), each with its own valid existence. This clone is substantially in agreement with the reference, but a complete review of all prevailing variants is recommended prior to use. [More info](#)

OTI Annotation: This clone was engineered to express the complete ORF with an expression tag. Expression varies depending on the nature of the gene.

Components: The ORF clone is ion-exchange column purified and shipped in a 2D barcoded Matrix tube containing 10ug of transfection-ready, dried plasmid DNA (reconstitute with 100 ul of water).

Reconstitution Method:

1. Centrifuge at 5,000xg for 5min.
2. Carefully open the tube and add 100ul of sterile water to dissolve the DNA.
3. Close the tube and incubate for 10 minutes at room temperature.
4. Briefly vortex the tube and then do a quick spin (less than 5000xg) to concentrate the liquid at the bottom.
5. Store the suspended plasmid at -20°C. The DNA is stable for at least one year from date of shipping when stored at -20°C.

RefSeq: [NM_021465.4](#), [NP_067440.3](#)

RefSeq Size: 5837 bp

RefSeq ORF: 3696 bp

Locus ID: 20843

UniProt ID: [O35638](#)

Cytogenetics: X A4

MW: 141.7 kDa

Gene Summary: Component of cohesin complex, a complex required for the cohesion of sister chromatids after DNA replication. The cohesin complex apparently forms a large proteinaceous ring within which sister chromatids can be trapped. At anaphase, the complex is cleaved and dissociates from chromatin, allowing sister chromatids to segregate. The cohesin complex may also play a role in spindle pole assembly during mitosis (By similarity).[UniProtKB/Swiss-Prot Function]