

Product datasheet for MR231697

Kcnt1 (NM_001302351) Mouse Tagged ORF Clone

Product data:

Product Type: Expression Plasmids
Product Name: Kcnt1 (NM_001302351) Mouse Tagged ORF Clone
Tag: Myc-DDK
Symbol: Kcnt1
Synonyms: C030030G16Rik; s; Sl; Slack; slo2; Slo2.2
Mammalian Cell Selection: Neomycin
Vector: pCMV6-Entry (PS100001)
E. coli Selection: Kanamycin (25 ug/mL)
ORF Nucleotide Sequence: >MR231697 representing NM_001302351
Red=Cloning site Blue=ORF Green=Tags(s)

TTTTGTAATACGACTCACTATAGGGCGGCCGGAATTCGTCGACTGGATCCGGTACCGAGGAGATCTGCC
GCCCGGATCGCC

ATGGCGCGGGCCAAGCTGCCGCGCTCGCCGTCCGAGGGCAAGGCGGGTCCGGGGGACACCCAGCCGGCG
 CTGCAGCCCTGAGGAGCCACACGGGCTCAGCCCGCTACTGCCGGCCCGGGCGGGGGCTCCGTGGGCAG
 CGACGTGGGCCAGAGGGTCCAGGTGGAGTTCTATGTCAATGAGAACACCTTCAAAGAGCGGCTCAAGCTG
 TTCTTCATCAAAAACAAAGATCCAGCCTGAGGATCCGGCTGTTCAACTTCTCCCTCAAGCTCCTCACCT
 GCCTGCTGTATATCGTCCGTGTCTGCTTGACAACCCAGACCAGGCATCGGATGCTGGGGCTGCACGAA
 GTATAACTACACTTTCAATGGCTCATCCTCTGAGTTCCACTGGGCTCCCATCCTGTGGGTGGAGAGGAAA
 ATGGCTCTGTGGGTGATCCAGGTCATTGTGGCCACAATAAGCTTCTTAGAGACCATGCTCATCATTTACC
 TCAGCTACAAAGGCAACATCTGGGAGCAGATATCCATGTGTCTTTTCGTCTTGGAGATGATCAACACACT
 GCCCTTCATCATCACGGTCTTCTGGCCACCTCTGCGGAACCTGTTTCATCCCCGTGTTTCTCAACTGCTGG
 CTGGCCAAGCATGCGCTGGAGAACATGATTAATGACTTCCACCGTGCCATCCTACGCACACAGTCAGCCA
 TGTTCAACCAGGTGCTCATCCTGTTCTGCACCCCTGCTGTGCTGGTCTTACAGGGACCTGTGGGATCCA
 GCACCTGGAGCGAGCAGGTGGCAACTTGAACCTGCTGACCTCCTTCTACTTCTGCATCGTGACTTTCTCA
 ACTGTGGGCTTCGGTGATGTGACGCCAAGATCTGGCCATCCAGCTCCTGGTGGTCATCCTGATCTGTG
 TCACCTTGTGGTGTCCCACTGCAATTTGAAGAGCTTGTCTACCTCTGGATGGAGCGTCAGAAGTCAGG
 GGGCAACTATAGCCGCCACCGAGCACGGACGGAGAAGCACGTAGTCTGTGTGAGCTCCCTCAAGATT
 GATCTCCTCATGGACTTCTGAATGAGTTCTATGCCCATCCCCGGCTCCAGGACTACTACGTGGTCATCC
 TGTGTCCCTCTGAAATGGACGTCCAGGTGCGCAGGGTGTGCAGATTCCCTGTGGTCCCAGCGGGTCAT
 CTACCTCCAGGGCTCTGCCCTCAAGGACCAGGATCTCATGCGAGCCAAGATGGACAACGGAGAGGCCTGC
 TTTATCCTCAGCAGCAGGAATGAGGTGGACCGCACAGCTGCGGATCACCAGACCATCCTTCGAGCCTGGG
 CTGTGAAGGACTTTCGCCCAACTGTCCCTCTATGTCCAGATCCTCAAGCCGAAAACAAGTTTACGCT
 CAAATTTGCTGACCACGTGGTATGCGAGGAAGAGTGCAAGTACGCCATGTGGCCCTGAAGTGCATCTGC



[View online »](#)

CCGGCCACCTCCACCCTCATCACCTGCTGGTGCACACGTCCCCTGGCCAGGAAGGACAGGAGTCTCCC
AGCAGTGGCAGCGCACGTACGGGAGGTGCTCGGGCAACGAGGTGTACCACATTCCGATGGGTGACAGTAA
ATTCTTCCGGGAGTATGAGGGCAAGAGCTTACCTACGCAGCCTTCCACGCGCACAAGAAATATGGGGTG
TGCCTCATCGGGCTGAAGCGTGAGGAGAACAAGAGTATCTGTGAACCCAGGACCACGGCACATCCTGG
CTGCCTCCGACACCTGCTTCTATATCAATATTACCAAGGAGGAGAAGTACAGTTTTCATCTTCAAACAGGA
GGAGAAGCAGAAGAGACGGGGCCTTGCAGGGCAGGCATATATGAAGGGCCCTCCCGCTCCCAGTGCAT
AGCATCATCGCCTCTATGGGGACAGTGGCCATGGACCTGCAGAACACAGATTGCCGGCCCTCCCAGGGTG
GCAGTGGCGGGGACGGCACAAAGCTGACTCTGCCACCGAGAACGGCTCTGGTAGTCGACGCCCCAGCAT
CGCACCCGTTCTGGAGTTGGCAGACAGCTCAGCCCTGTTGCCCTGCGACCTGCTGAGTGACCAGTCAGAG
GATGAGGTGACACCCTCGGACGACGAGGGGCTCTCTGTGGTTGAGTACGTGAAGGGCTATCCCCCAACT
CACCTACATTGGCAGCTCCCCGACTTTATGCCACCTCCTGCCTGTGAAAGCCCCCTTCTGCTGCCTGCG
GTTGGACAAGGGCTGCAAACACAACAGCTACGAGGATGCCAAGGCCTATGGGTTCAAGAACAAGCTGATT
ATTGTCTCTGCTGAGACGGCAGGCAACGGGCTCTACAACCTCATCGTGCCTCTGCGCGCCTACTACCGGT
CCC GCCGGGAGCTCAACCCTATCGTGTGCTGCTTGACAACAAGCCTGACCACCCTTCTGGAGGCCAT
CTGTTGCTTCCCATGGTCTACTACATGGAGGGATCCGTGGACAACCTGGACAGTTACTGCAGTGTGGC
ATCATCTATGCTGACAACCTGGTGGTGGTGGACAAGGAGAGCACTATGAGCGCTGAAGAGGACTACATGG
CAGATGCCAAGACCATCGTCAATGTGCAAACCATGTTCCGGCTTTTCCCCAGTCTCAGCATCACCCAGGA
GCTCACACACCCTTCAAACATGCGGTTGATGAGTTCCGTGCCAAGGACAGCTACTCTCTGGCTCTTTCC
AACTTGAAGCAAGAACGGGAGAACGGCTCCAACTGGCCTTTCATGTTCCGCCTGCCATTTGCTGCTG
GTGAGATATTTAGTATCAGCATGTTGGATACACTGCTCTACCAGTCTTCGTGAAGGACTACATGATCAC
CATCACAGGCTGCTCTTGGGCTTGATACTACACCAGGCTCCGGCTACCTCTGTGCAATGAAGTAACC
GAGGACGACCTGTGGATCCGCACCTACGGCCGCCTTCCAGAACTCTGCTCTCCAGCGCCGAGATCC
CCATCGGCATCTACAGGACCGAGTGCCATGTCTTCTCGAGCCCCATGACGTGAGAGCCAGTCTCAGAT
CTCGGTGAACATGGAGGACTGCGAGGATACTCGGGAGGCCAAGGACCCTGGGGCACACGAGCTGCATCT
GGCAGTGGCAGCACCCATGGCCGTCACGGGGCAGTGCTGACCCAGTGGAGCACCCACTACTACGTCGCA
AGAGCCTGCAGTGGGCCCGCAAGCTGAGTCGCAAGAGCACCAAGCAGGCAGGGAAGGCACCTGTGGCCAC
AGACTGGATCACCCAGCAGCGGCTCAGCCTGTACCAGCCTCAGAGCGCCAGGAGCTCTCAGAGCTGGTC
AAGAACC GAATGAAGCACCTGGGACTGCCACCCTGGCTATGAGGACGTAGCAAATTTAACAGCCAGTG
ATGTGATGAATCGGGTAAACCTGGGATATTTGCAAGATGAGATGAACGATCATCACCGAACACCCTTTC
CTATGTACTCATCAACCCCGCCAGACACAAGACTGGAACCCAACGACATTGTGTACCTCATCCGTTC
GACCCCTGGCCATGTGGCCAGCAGCTCCAGAGTCGAAAAGCAGCTGCAGCAACAAGCTCTCATCCT
GTAATCCTGAGACCAGGGATGAGACCCAGCTC

ACGCGTACGCGGCCGCTCGAGCAGAACTCATCTCAGAAGAGGATCTGGCAGCAAATGATATCCTGGATT
ACAAGGATGACGACGATAAGGTTTAA

Protein Sequence: >MR231697 representing NM_001302351
 Red=Cloning site Green=Tags(s)

MARAKLPRSPSEKAGPGDTPAGAAAPEEPHGLSPLLPARGGGSGVSDVGQRVQVEFYVNNENTFKERLKL
 FFIKNQRSSLRIRLNFSLKLLTCLLYIVRVLLDNPDQIGCWGCTKYNYTFNGSSSEFWAPILWVERK
 MALWVIQVIVATISFLETMLIIYLSYKGNIEWEIFHVSFVLEMINTLPIITVFWPPLRNLFIIPVFLNCW
 LAKHALENMINDFHRAILRTQSAMFNQVILFCTLLCLVFTGTGCIQHLEKAGGNLNLTSFYFCIVTFS
 TVGFGDVTPKIWPSQLLVVILICVTLVVLPLQFEELVYLWMERQKSGGNYSRHRARTEKHVVLVSSSLKI
 DLLMDFLNEFYAHPRLQDYVVVILCPSEMDVQVRRVLQIPLWSQRVIYLGQSALKDQDLMRKMDNGEAC
 FILSSRNEVDRTAADHQITLRAWAVKDFAPNCPLYVQILKPENKFHVKFADHVVEECEEKYAMLALNCIC
 PATSTLITLLVHTSRGQEGQESPEQWQRTYGRCSGNEVYHIRMGDSKFFREYEGKSFTYAAFHAKKYGV
 CLIGLKREENKSILLNPGPRHILAASDTCFYINITKEENSAFIFKQEEKQKRRLAGQALYEGPSRLPVH
 SIIASMGTVAMDQNTDCRPSQGGSGDGTGLTLPTEGSGSRRPSIAPVLELADSSALLPCDLLSDQSE
 DEVTPSDDEGLSVVEYVKGYPNSPYIGSSPTLCHLLPVKAPFCLRLDKGCKHNSYEDAKAYGFKNKLI
 IVSAETAGNGLYNFIVPLRAYRSRRELNPIVLLLDNKPDDHFLAICCFPMVYMEGSVDNLDLQLCGG
 IYADNLVVVDKESTMSAEEDYMADAKTIVNVQTMFRLFPSLSITTELTHPSNMRFMQFRAKDSYSLALS
 KLEKQERENGSNLA FMFRLPFAAGRVSISMLD TLLYQSFVKDYMITITRLLGLDTPGSGYLCA MKVT
 EDDLWIRTYGRLFQKLCSSSAEIPIGIYRTECHVFSEPHDVRAQSQISVNMEDCEDTREAKGPWGTRAA
 SSGSTHGRHGGADPVEHPLLRKSLQWARKLSRKSTKQAGKAPVATDWTQQRSLYRRSERQELSELV
 KNRMKHLGLPTTGIEDVANLTASDVMNRVNLGYLQDEMNDHHQNTLSYVLINPPDPTRLEPNDIVYLIRS
 DPLAHVASSSQSRKSSCSNKLSSCNPETRDETQL

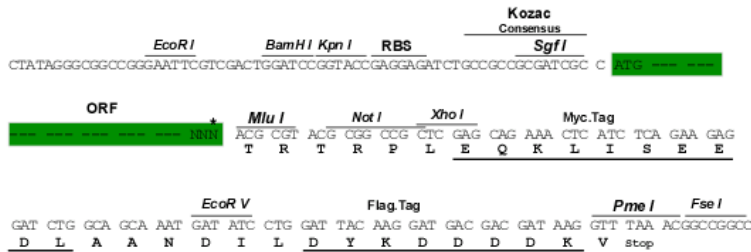
TRTRPLEQKLI SEEDLAANDILDYKDDDDKV

Restriction Sites:

SgfI-MluI

Cloning Scheme:

Cloning sites used for ORF Shuttling:



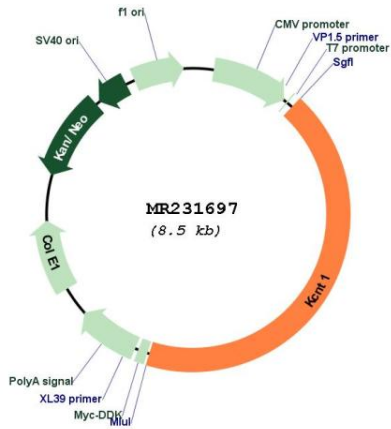
* The last codon before the Stop codon of the ORF

ACCN: NM_001302351

ORF Size: 3672 bp

OTI Disclaimer:	The molecular sequence of this clone aligns with the gene accession number as a point of reference only. However, individual transcript sequences of the same gene can differ through naturally occurring variations (e.g. polymorphisms), each with its own valid existence. This clone is substantially in agreement with the reference, but a complete review of all prevailing variants is recommended prior to use. More info
OTI Annotation:	This clone was engineered to express the complete ORF with an expression tag. Expression varies depending on the nature of the gene.
Components:	The ORF clone is ion-exchange column purified and shipped in a 2D barcoded Matrix tube containing 10ug of transfection-ready, dried plasmid DNA (reconstitute with 100 ul of water).
Reconstitution Method:	<ol style="list-style-type: none">1. Centrifuge at 5,000xg for 5min.2. Carefully open the tube and add 100ul of sterile water to dissolve the DNA.3. Close the tube and incubate for 10 minutes at room temperature.4. Briefly vortex the tube and then do a quick spin (less than 5000xg) to concentrate the liquid at the bottom.5. Store the suspended plasmid at -20°C. The DNA is stable for at least one year from date of shipping when stored at -20°C.
Note:	Plasmids are not sterile. For experiments where strict sterility is required, filtration with 0.22um filter is required.
RefSeq:	NM_001302351.1 , NP_001289280.1
RefSeq Size:	5945 bp
RefSeq ORF:	3675 bp
Locus ID:	227632
UniProt ID:	Q6ZPR4
Cytogenetics:	2 A3
MW:	138.6 kDa
Gene Summary:	This gene encodes a member of the Slo potassium channel family that has shown to be activated by both sodium and chloride ions. This channel represents the largest potassium channel subunit yet identified. This channel may be important in development and pain signaling. Alternative splicing results in multiple transcript variants. [provided by RefSeq, Oct 2014]

Product images:



Circular map for MR231697