

Product datasheet for MR231681

Tyk2 (NM_001205312) Mouse Tagged ORF Clone

Product data:

Product Type: Expression Plasmids
 Product Name: Tyk2 (NM_001205312) Mouse Tagged ORF Clone
 Tag: Myc-DDK
 Symbol: Tyk2
 Synonyms: JTK1
 Mammalian Cell Selection: Neomycin
 Vector: pCMV6-Entry (PS100001)
 E. coli Selection: Kanamycin (25 ug/mL)
 ORF Nucleotide Sequence: >MR231681 representing NM_001205312
 Red=Cloning site Blue=ORF Green=Tags(s)

TTTTGTAATACGACTCACTATAGGGCGGCCGGAATTCGTCGACTGGATCCGGTACCGAGGAGATCTGCC
 GCC**CGATCGCC**

ATGGTGGGGACCATGCCTCTGTGTGGGCGGAGAGCCATCTTGAAGACAGCAAGGCAGATGGCACAGAAG
 CTCAGCCCCTGGTGGCCACAGGATGCTTGTGGTCTACTGCATTGGCCTGGGCCAGGGCGGGGAGCC
 CTGGGTACCTTCAGCCAGACATCTCTGACTGCAGAGGAGGTCTGCATCCACATCGCACAAAAGTCGGC
 ATCACTCCACCCTGCTTGAATCTCTTCGACTCTACAATGCACAGGCTAAGGTCTGGCTGCCCCAAACC
 ATATTCTGGATACATCCCAAGACATGAACCTCTATTTTCGAATGAGGTTTACTTCCGGAAGTGGCATGG
 CATGAATCCCCAGGAGCCAGCTGTATACCGGTGTGGTTTCCCAGGGCAGAGACTTCCTCAGACCGGCA
 GAGCAAGGTGTACAGCTCTGGACTCTGCCTCGTTTGAATACCTTTTGGACAGGGATGGTATGTTGGCA
 ATAGAGCAAAAAGCTCCACACCTCTTTTTCTATCCATCGCTCTACCCCTCAGGGAAAGCATGAGTTCAT
 GAACGATGTGGTGTCTCTGCGGGACCTGTCTAGCGAGGAGGAGATCCACCACTTTAAGAATGAGAGCTTA
 GGCATGGCCTTCTGCACCTGTGTACCTTGTCTCAGCCGAGGGCGTCCCCTGGAGGAGATGGCCAGAG
 AGATCAGCTTCAAGAAGTGCATCCCTCATTCTCCGACAGCACATCCGGCAGCACAAATGTGCTCACAGC
 CCTGCGGCTCCACAGAGTCTTCCGCGCTTCTGCGGGCCTTCCGGCCTGGCCACCTCTCCACAGGTT
 GTGATGGTGAAGTACTTGGCTACCCTGGAGCGGCTGGCTCCGCGCTTTGGCTCAGAGCGCATACCTGTGT
 GTCATCTGGAGGTCTTGGCACAGCCCGAGAGGGACCCCTGCTACATCCAGAAGAGTGGGCAGACCGCTGG
 GGATCCAGGCCAGAGCTGCCTTCCGGGCTCCACCCACGAGGTACTGGTGACAGGCACCGGAGGTATC
 CAGTGGCATCCGCTGCAGACCCAGGAATCTGAGAGAGGTAACAGCAGAGGGAATCCCCACGGCAGCCGT
 CGGGGAAGAAGCCAAAGCCCCAAGGCTGGAGAGCACCTGACAGAGAGCCCTCAGGAACCACTTGGAC
 CTACTTCTGTGACTTCCAGGACATTTCCACGTTGGTGTAAAGGAGCGTCGCGTGACATCCACCTCCA
 GACAACAAGTGTGTTGCTGTGCTCTGTTCCAGGCTGAGGCCCTGTCCTTTGTGGCCCTGGTCGATG
 GCTATTTCCGCTTACTGCTGACTCCAGCCACTATCTGTGCCATGAGGTGGCACCCCGAGGCTGGTGAC
 TAGCATCCAGAAGGCATCCATGGGCCCTGATGGATCCGTTTGTACAGGCCAAGCTGTGGCCAGAGGAC



[View online »](#)

GGCCTCTACCTGATTCAGTGGAGCACCAGCCACCTGCACCGCCTGATCCTTACCGTGGCCCATCGAAACC
CGGCTTTCAGTAATGGCCCTCGGGGCTGCGCCTGCGAAAGTTCCCCATCACACAGCAGCCTGGAGCCTT
TGTGCTGGATGGCTGGGGCCGCTCCTTTGCCAGCTTGGGGGACCTTCGGCTCGCCTTGCAGGGCTGCTCG
TTGCGGGCCGGTATGACTGTTTCCCCGCACCACTGCTGCCTGCCCGGCCAAGAGAAATCTCCAACC
TCGTATCATGCGGGGTCTAGGGCCACACCCGGCCTCAACCTCAGTCAGCTCAGCTTCCACAGGGT
TCACCAGGATGAAATCACCCAGCTGTCCCACTTGGCCAAGGCACAAGGACCAATGTGTATGAGGGCCTT
CTAAGAGTGGGAGGCCCGATGAGGGCAAAGTGGACAATGGATGTCCCCCTGAGCCTGGTGGGACTAGTG
GGCAGCAGCTTCGAGTGGTGTCTCAAAGTTCTCGACCCAGTCACCATGATATCGCCTTGGCCTTCTATGA
GACTGCTAGCCTCATGAGCCAGGTGTCACACATGCACCTGGCTTTCCTGCATGGTGTTCGCTGCGTGGC
TCAGAGAAATATCATTGTGACAGAATTCGTAAGAACATGGTCCCTTGGATGTGTGGTTACGGCGACAGAGGG
GCCAAGTGCCCATGACCTGGAAGATGGTCGTGGCTCAGCAGCTGGCCAGCGCCCTCAGCTACCTGGAGGA
CAAGAATCTGGTTCACGGGAATGTATGTGGCCGGAACATCCTGCTGGCTCGCCTGGGGTTGGAGGAGGGT
ACCAACCCCTTCAAGCTAAGTATCCTGGTGTGGCCAGGGTGCCTCTCCAGGGAAGAGCGGGTGG
AGCGCATCCCCTGGACAGCTCCCGAGTGCCTGTCTGGAGGGACCAGTAGCTTGGTACTGCCACGGACAT
GTGGGGCTTTGGTCCACCTTCTTGAGATCTGCTTTGATGGGGAGGCACCCCTGCAGGGTCTGGTCCC
TCTGAGAAAGAACGGTTCTACACAAAGAAACATCAGCTGCCTGAACCCTCATCCCCAGAGCTGGCCACAC
TCAACCCGAGTGCCTGACCTATGAACAGCACAGCGGCCATCCTTCCGACCATTTTGGCGGACCTCAC
AAGGCTGCAGCCACAGAATCTAGTCGGCACTTCGGCTGTGAACCTCAGACTCACCAGCATCAGACCCCACT
GTTTTCCACAAGCGCTATTTGAAAAAGATCCGGGATTTGGGTGAGGGTCACTTTGGCAAGGTGAGCCTGT
ACTGCTACGACCAACCAATGACGGCACTGGCGAGATGGTGGCCGTGAAGGCCCTGAAGGAAGGGTGGCG
TCCCCAGCTCCGCTCAGGCTGGCAGCGGGAGATCGAGATCCTGCGGACGCTGTACCACGAACATATTGTC
AAGTATAAAGGCTGCTGTGAGGACCAAGGAGAGAAGTCTGTACAGCTGGTCATGGAGTACGTCCTCTGG
GCAGCCTCCGAGACTACCTGCCAAGCACTGCGTAGGGCTGGCGCAGCTCCTGCTGTTTGGCCAGCAGAT
CTGCGAGGGCATGGCCTACCTGCACGCTCAGCACTACATTACCCGAGACCTCGCCGCGCGCAACGTGCTG
CTGGACAACGACAGGCTGGTCAAGATTGGAGACTTTGGCCTAGCCAAGGCTGTACCTGAAGGCCACGAGT
ACTACCGAGTGCAGGAGGACGGGACAGCCAGTGTCTGGTATGCCCCAGAATGCCTGAAGGAGTGCAA
ATTTTACTATGCATCTGATGTCTGGTCTTCGGGGTAACTCTGTATGAGTTGTTGACATACTGTGACTCT
AACCAGAGTCCCCATATGAAATTCACCGAGCTCATCGGCCATACCCAGGGCCAGATGACCGTGTGAGGC
TCACAGAGCTGCTGGAACGAGGAGAGAGGCTGCCTCGGCCTGACAGGTGTCCCTGTGAGATCTATCACCT
CATGAAGAACTGCTGGGAGACAGAGGCCTCCTTCCGGCCACCTTCCAGAATCTTGTGCCATCCTCCAG
ACAGCACAGGAGAAGTACCAAGGTGAGTGCCTTCCGTGTTGAGGTTGTC

ACGCGTACGCGGCGCTCGAGCAGAACTCATCTCAGAAGAGGATCTGGCAGCAAATGATATCCTGGATT
ACAAGGATGACGACGATAAGGTTTAA

Protein Sequence: >MR231681 representing NM_001205312
 Red=Cloning site Green=Tags(s)

MVGTMPLCGRRRAILEDKADGTEAQPLVPTGCLMVLHWPGEPPGEPWVTFSTSLTAAEEVCIHIAHKVG
 ITPPCLNLFALYNAQAKVWLPNHILDTSQDMNLYFRMRFYFRNWHGMNPQEPAYVRCGFPGAETSSDRA
 EQGVQLLDSASFEYLFEQGWYVGNRAKSSHTSFSIHRSTPQGHKHEFMNDVVSRLDLSSEEEIHHFKNESL
 GMAFLHLCHLALSRGVPLEEMAREISFKNCIPHSFRQHIRQHNVLTRLRLHRVFRFLRAFRPGHLSQQV
 VMVKYLATLERLAPRFGSERIPVCHLEVLAQPERDPCYIQNSGQTAGDPGPELPSGPPTHEVLVTGTGGI
 QWHPLQTQESERGNRGNPHGSRSGKKPKAPKAGEHLTESPQEPWTFYCDFQDISHVVLKERRVHIHLQ
 DNKCLLLCLCSQAEALSFVALVDGYFRLTADSSHYLCHEVAPPRLVTSIQNGIHGPLMDPFVQAKLWPED
 GLYLIQWSTSHLHRLILTVAHRNPAFNGPRGLRLRKFPIITQQGAFVLDGWGRSFASLGDRLRALQGCS
 LRAGDDCFPLHHCLPRPREISNLVIMRGSRAHTRPLNLSQLSFHRVHQDEITQLSHLGGQTRTNVYEG
 LRVGGPDEGKVDNGCPPPEGGTSGQQLRVVLKVLDP SHHDIALAFYETASLMSQVSHMHLAFLHGVCVRG
 SENIIVTEFVEHGPLDVWLRQRQGVPMWKMVVAQQLASALSYLEDKNLVHGNVCGRNILLARLGL EEG
 TNPFIKLSDPGVQGAL SREERVERIPWTAPECLSGGTSSLGATDMWGFATLLEICFDGEAPLQGRGP
 SEKERFYTKKHQLPEPSSPELATLTRQCLTYEPAQRPSFRTILRDLTRLQPQNLVGTSAVNSDSPASDPT
 VFHKRYLKKIRDLGEGHFGKVSLYCYDPTNDGTGEMVAVKALKEGCGPQLRSGWQREIEILRTLYHEHIV
 KYKGCCEDQGEKSVQLVMEYVPLGSLRDYLRHCVGLAQLLLFAQQICEGMAYLHAQHYIHRDLAARNVL
 LDNDRLVKIGDFGLAKAVPEGHEYYRVREDGDSPVFWYAPECLKECKFYASDVWSFGVTLTYELLTYCDS
 NQSPHMKFTELIGHTQGMVTLRLTELLERGERLPRPDRCPCEIYHLMKNCWETEASFRPTFQNLVPILO
 TAQEKYQGQVPSVFSVC

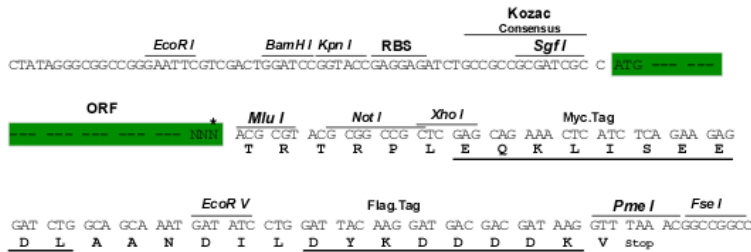
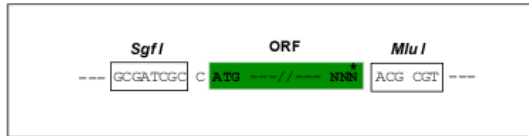
TRTRPLEQKLISEEDLAANDILDYKDDDDKV

Restriction Sites:

SgfI-MluI

Cloning Scheme:

Cloning sites used for ORF Shuttling:



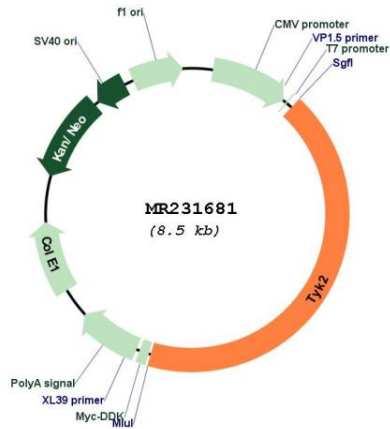
* The last codon before the Stop codon of the ORF

ACCN: NM_001205312

ORF Size: 3621 bp

OTI Disclaimer:	The molecular sequence of this clone aligns with the gene accession number as a point of reference only. However, individual transcript sequences of the same gene can differ through naturally occurring variations (e.g. polymorphisms), each with its own valid existence. This clone is substantially in agreement with the reference, but a complete review of all prevailing variants is recommended prior to use. More info
OTI Annotation:	This clone was engineered to express the complete ORF with an expression tag. Expression varies depending on the nature of the gene.
Components:	The ORF clone is ion-exchange column purified and shipped in a 2D barcoded Matrix tube containing 10ug of transfection-ready, dried plasmid DNA (reconstitute with 100 ul of water).
Reconstitution Method:	<ol style="list-style-type: none">1. Centrifuge at 5,000xg for 5min.2. Carefully open the tube and add 100ul of sterile water to dissolve the DNA.3. Close the tube and incubate for 10 minutes at room temperature.4. Briefly vortex the tube and then do a quick spin (less than 5000xg) to concentrate the liquid at the bottom.5. Store the suspended plasmid at -20°C. The DNA is stable for at least one year from date of shipping when stored at -20°C.
RefSeq:	NM_001205312.1 , NP_001192241.1
RefSeq Size:	4873 bp
RefSeq ORF:	3624 bp
Locus ID:	54721
Cytogenetics:	9 A3
MW:	135.9 kDa
Gene Summary:	Involved in intracellular signal transduction by amplifying type I and type II IFN signaling. Phosphorylates the interferon-alpha/beta receptor alpha chain. Plays an essential role in promoting selective immune responses, including innate host defense mechanisms and specific antiviral activities.[UniProtKB/Swiss-Prot Function]

Product images:



Circular map for MR231681