

## Product datasheet for MR231668

### Tjp2 (NM\_001198985) Mouse Tagged ORF Clone

#### Product data:

Product Type:	Expression Plasmids
Product Name:	Tjp2 (NM_001198985) Mouse Tagged ORF Clone
Tag:	Myc-DDK
Symbol:	Tjp2
Synonyms:	ZO-2
Vector:	pCMV6-Entry (PS100001)
E. coli Selection:	Kanamycin (25 ug/mL)
Cell Selection:	Neomycin
ORF Nucleotide Sequence:	>MR231668 representing NM_001198985 Red=Cloning site Blue=ORF Green=Tags(s)

TTTTGTAATACGACTCACTATAGGGCGGCCGGAATTCGTCGACTGGATCCGGTACCGAGGAGATCTGCC  
GCC**GCGATCGCC**

ATGCCGGTGGGGGAGACCGCGGGTCCACCGCGCGGGAGCTGTCGGGCTGGCAGCGCGGTCCAGGCA  
TGGAGGAGGTGATATGGGAGCAGTACACCGTGACCCTGCAGAAGGATTCCAAAAGAGGATTTGGAATTGC  
CGTGTCCGGAGGCAGAGACAACCCCACTTTGAAAATGGGGAGAGCTCAATCGTCATCTCAGATGTGCTC  
CCAGGTGGACCCGCTGATGGCTTCAAGAAAATGACAGGGTGGTCAATGGCACCCCATGG  
AAGATGTGCTCCATTCGTTTGGCGTTCCAGCAGCTTAGGAAAAGTGGGAAGATAGCAGCCATCGTGGTCAA  
GAGACCCCGGAAGGTTCCAGTGGCCCACTGCAAGGCAGCCCCCTCTCAGTCATGACGACCGAGTTTTT  
GAAGTGATTGAAGAAATTTGATGGCAGAAGTTCCCGCAGCGGTACAGTGAGAGGAGTCCGGCACAGCAGCC  
ACGACATGCTCAGCCACAGCTGGGAGGGCAATAGGGAGAGGGGGCGACCCATCAGCGCACACAGAGCCG  
GGAGCGGGAGCGCAGCCGTGGCAGGAGCCTGGAACGGGGCCTGGACCAGGAAGACTATGGGCGCAGCCGT  
GAGCGCAGCCGTGGCCGGAGCCTGGAGCCGGGCTGGACCGGACTTTGTGTCCAGGACCCACAGCCGTG  
GCCGTAGCATCGACAGGGACTACGACCGAGACTATGAGCGCTCCTATCACGAAGCTTATGAACCCGACTA  
CGGAGGCGGCTACAGCCCATCATATGACCGTAGAGCCCATCCAGAGACCCGCTATGAACGGAGCCCGAGC  
CGAGAACACCTACGTTCCCGAAGCCCGAGCCCGAGTCTAGGTCACGGCATGAACACAAGGGCCAACATG  
ATCCCGACAGGCCATCGGGTCTTTCTAACAAAAGCAAAGCAAATGAAGAGTATGGGCTCCGGCTGGG  
GAGTCAGATCTTCATCAAAGAAATGACCAGAACAGGACTGGCCACCAAAGATGGCAACCTTCATGAGGGG  
GACATAATTCTCAAGATCAACGGCACTGTTACTGAGAACATGTCTAACGGATGCTCGGAAGTTAATAG  
AAAAGTCTCGAGGAAAATGCAGCTTGTGGTGTGAGAGACAGCAAGCAGACCCTCATCAACATCCAGC  
CCTAAACGACAGCGACTCTGAAGTGGAGGATATCTCGAAATAGAGTCCAACCGGTTTTCTCTCCAGAG  
GAGAGACGCCAGCAGTATTCTGATCAGGATTACCATTCTCCACTGAGAAGCTGAAGGAGAGGCCGAGCT  
CAAGAGAGGAGACCTCAGGCAGACTATCCAGGATGGGTGCCACTCCCACGCCGTTCAAGTCCACGGGGGA  
CATCACAGCTGCGGGGGTACAGAGGCCAGCAGGGAGCCAGGTACCAGGAAGAAGGCCAGTTCCTCAA  
CCCAGAACAGCTCCAAGAGTTTTTCTTCGTCCTAGTCCCGAAGATGAAGCAATATATGGCCCTAACACCA



[View online »](#)

AAATGGTGAAGTTCAAGAAGGGAGACAGCGTGGGCCTCCGGTTGGCTGGTGGAAACGACGTTGGGATATT  
TGTGGCTGGCATTGAGGAGGCACCTCCGCAGAGCAGGAGGGCCTGCAAGAAGGAGACCAGATTCTGAAG  
GTGAACACACAGGATTTGAGAGGGCTAGTCCGGGAAGATGCGGTCTCTACCTGCTAGAAATCCCCAAAG  
GTGAACTGTGACCATTTGGCTCAGAGCCGAGCAGACGTGTACAGAGATATCCTGGCTTGTGGCAGGGG  
AGATTCGTTTTTCATAAGAAGCCACTTTGAATGTGAGAAGGAACTCCCCAGAGCCTGGCCTTACCAGG  
GGAGAGGTTCCGAGTGGTAGACACGCTGTACGATGGCAAGCTGGGCCACTGGCTGGCCGTGAGGATCG  
GGAATGAGCTGGAGAAAGGCTTGATCCCTAACAAAAGCAGAGCCGAGCAAATGGCCAGTGTCCAGAATGC  
CCAGCGAGAGAACGCCGGGGACAGAGCAGACTTCTGGCGGATGCGTGGCCAGAGATCCAGCGGCGGCGTC  
AAGAAGAACCTCCGCAAGAGCCGGGAAGACCTGGCGGCTGCTGTATCGGTTAGCACCAAGTTCCTGCCT  
ACGAGAAGGTTCTGCTTCGGGAAGCTGGCTTCAAGAGACCCGTGGTTCTGTTTGGCCCCATAGCAGATAT  
AGCAATGGAAAGGTTGGCAACTGAGTTACCAGACCTGTTTCAAAGTCAAAAAACAGAACCCAAAGATGCC  
GGATCTGAGAAATCCAGTGGAGTGGTTCGGTTGAATACCGTGAGGCAAATATTGAGCAGGACAAGCAGC  
CCCTGCTCGACGTTACCCCAAAGCTGTGGACCTGCTCAACTACACTCAGTGGTTCCTATCGTGATTTT  
CTTCAACCCGGATTCCAGACAAGGTGTTAAAACCATAAAGCAGAGGTTGAGTCCAACATCCAATAAAAGT  
TCTCGAAGTTATTTGATCAAGCCAACAAGCTCAAAAAGACCTGTCTCATCTTTTTACAGCCACAATCA  
ACGTGAATTCAGCCAACGATGGCTGGTTTGGCAGCTTGAAGGACAGCATTGAGCAGCAGCAAACGAAGC  
AGTCTGGGTCTCTGAAGGAAAGATGGAAGGGATGGATGATGATGCTGAAGACCGCATGTCCTACTTAACC  
GCCATGGGCGCGGACTATCTGAGTTGTGACAGCCGTCTCATCAGTGACTTTGAAGACACCGACGGCGAGG  
GAGGCGCTACTGACAATGAGCTAGAGGAGCCGGCGGAGGAGCCGCTGGTGTCTTCCATCACCCGCTC  
CTCGGAGCCGGTGCAGCACGAGGAGAACAATAAGGAAATCCAGCCCAGAGCCACGAGCTCAGATGAGGAGG  
GCTGCTAGCAGAGACCAACTTAGGGATGCTAGCCGCCCCAGCCTTCAAGCCAGAGCCGCCAAGGCAA  
GAAGCCAGAACAGAGAAGACTCCTTCGACTACTCCAAGTCAAACCTCCCCGCCACAGCCGGCAGTGAAT  
CCCGGGGGGATCCACCAAAGGCTATCCTCCCCCTATTGCAGCGAAGCCTGCCTTTGGGCGGCCATCCTG  
AAGCCTTCCACTCCAGTCCCTATGCCTGAGAGCGAGGAGTTGGAGAGAGCACCGAGGAGCAGGAAGATG  
CTCCAGATCAGTCTGGCAGAGTGAAAATATTCGAGAAGATGGACCACAAGGCAAAATACAGAGGAT  
GCAGGAGCTCCAGGAGGCCAGAATGCGAGGATCGAAATAGCTCAGAAGCACCTGACATCTATGCGGTT  
CCAATCAAGGCCCCCAAGCCAGATGCTGGCCTCCCCCGCACATGAGTTCTAGACCCCCAGAGCCCCAGA  
AAGCTCCTTCCAGACTTTACCAGGACACCAGAGGAAGCTACGGCAGTGACCCCGAGGAGGAGGATACCG  
CCAGCAGTTGGCAGCACACTCGAAGCGTGGTACTACAGCCAGCCCTCCCGGTACCGAGACACGGAGTTA

ACGCGTACGCGGCGGCTCGAGCAGAACTCATCTCAGAAGAGGATCTGGCAGCAAATGATATCCTGGATT  
ACAAGGATGACGACGATAAGGTTTAA

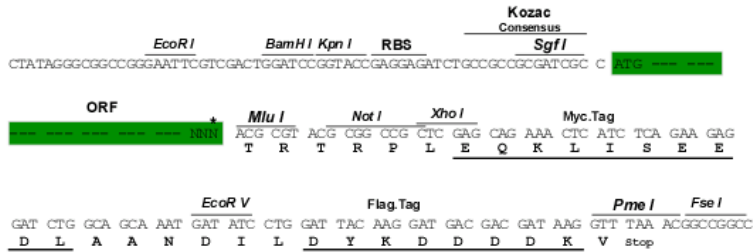
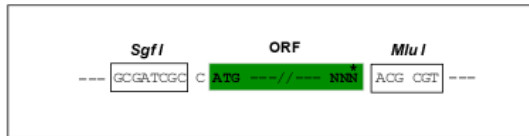
Protein Sequence: >MR231668 representing NM\_001198985  
Red=Cloning site Green=Tags(s)

MPVVRGDRGFPPREL SGWQRGPGMEEVIWEQYTVTLQKDSKRGFGI AVSGGRDNPHFENGETSIVISDVL  
PGGPADGLLQENDRVVMVNGTPMEDVLHSFAVQQLRKSGKIAAIVV KRPRKVQVAPLQGSPLSHDDRGF  
EVIEEFDGRSFRSGYSERSRHSSHDMLSHSWEGNREGRPHQRTQSRERERSRGRSLERGLDQEDYGRSR  
ERSRGRSLERGLDRDFVSRDHSRGRSIDRDYDRDYERSYHEAYEPDYGGGYSYDRAHPETRYERSRS  
REHLRSRSPSPESRSRHEHKQHQDPDRPIGVLLTKSKANEEYGLRGLGSQIFIKEMTRTGLATKDGNLHEG  
DIILKINGTVTENMSLTDARKLIEKSRGKLQLVVL RDSKQTLINIPALNDSSEVEDISEIESNRSFSPE  
ERRQQYSDQDYHSSTEKLKERPSSREETS GRLSRMGATPTPFKSTGDITAAGVTEASREPRYQEEGPVVPQ  
PRTAPRVFLRPSPEDEAIYGPNTKMVRFKKGDSVGLRLAGGNDVGFVAGIQEGTSAEQEGLQEGDQILK  
VNTQDFRGLVREDAVLYLLEIPKGETVTILAQSRADVYRDLACGRGDSFFIRSHFCEKETPQS LAFTR  
GEVFRVVD TLYDGKLGHWLAVRIGNELEKGLIPNKSRAEQMASVQNAQRENAGDRADFWRMRGQRSSGGV  
KKNLRSREDLAAAVSVSTKFPAYEKVLLREAGFKRPVVLFGPIADIAMERLATELPDLFQTAKTEPKDA  
GSEKSSGVVRLN TVRQIIEQDKHALLDVTPKAVDLLNTQWFPIVIFFPDSRQGVKTIRQRLSPTS NKS  
SRKLFQANKLKKTC SHLFTATINVNSANDGWFGSLKDSIQQQQNEAVWVSEGKMEGMDDAEDRMSYLT  
AMGADYLCDSRLISDFEDTDGEGGAYTDNELEEPAAEPLVSSI TRSSEP VQHEENIRKSSPEPRAQMRR  
AASRDQLRDASPPPAFKPEPPKARSQNRDSFDYKSNLPATAGSEIPGGSTKGYPPIAAKPAFGRPIL  
KPSTPVPMPESSEEVGESTEEQEDAPRSVLGRVKIFEKMDHKAKLQRMQELQEAQNARIEIAQKHPDIYAV  
PIKAPKPDAGLPPHMSSRPPEPQKAPSRLYQDTRGSYGS DPEEEEEYRQLAAH SKRGYYSQPSRYRDEL

TRTRPLEQKLISEEDLAANDILDYKDDDDKV

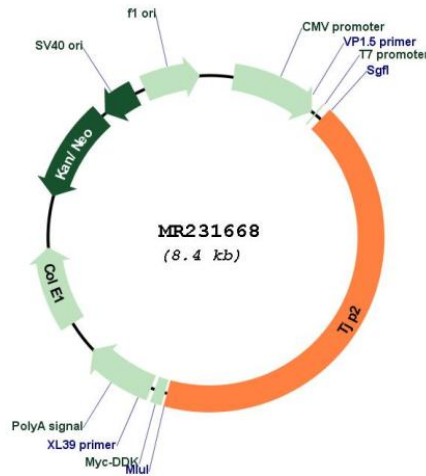
Restriction Sites: SgfI-MluI  
Cloning Scheme:

Cloning sites used for ORF Shutting:



\* The last codon before the Stop codon of the ORF

## Plasmid Map:



ACCN: NM\_001198985

ORF Size: 3570 bp

OTI Disclaimer: The molecular sequence of this clone aligns with the gene accession number as a point of reference only. However, individual transcript sequences of the same gene can differ through naturally occurring variations (e.g. polymorphisms), each with its own valid existence. This clone is substantially in agreement with the reference, but a complete review of all prevailing variants is recommended prior to use. [More info](#)

OTI Annotation: This clone was engineered to express the complete ORF with an expression tag. Expression varies depending on the nature of the gene.

Components: The ORF clone is ion-exchange column purified and shipped in a 2D barcoded Matrix tube containing 10ug of transfection-ready, dried plasmid DNA (reconstitute with 100 ul of water).

Reconstitution Method:

1. Centrifuge at 5,000xg for 5min.
2. Carefully open the tube and add 100ul of sterile water to dissolve the DNA.
3. Close the tube and incubate for 10 minutes at room temperature.
4. Briefly vortex the tube and then do a quick spin (less than 5000xg) to concentrate the liquid at the bottom.
5. Store the suspended plasmid at -20°C. The DNA is stable for at least one year from date of shipping when stored at -20°C.

RefSeq: [NM\\_001198985.2](#)

RefSeq Size: 4637 bp

RefSeq ORF: 3573 bp

Locus ID: 21873

Cytogenetics: 19 B

MW: 134.3 kDa

**Gene Summary:** Plays a role in tight junctions and adherens junctions.[UniProtKB/Swiss-Prot Function]