

Product datasheet for MR231649

Atp13a5 (NM_001284375) Mouse Tagged ORF Clone

Product data:

Product Type:	Expression Plasmids
Product Name:	Atp13a5 (NM_001284375) Mouse Tagged ORF Clone
Tag:	Myc-DDK
Symbol:	Atp13a5
Synonyms:	C630015F21Rik
Mammalian Cell Selection:	Neomycin
Vector:	pCMV6-Entry (PS100001)
E. coli Selection:	Kanamycin (25 ug/mL)
ORF Nucleotide Sequence:	>MR231649 representing NM_001284375 Red=Cloning site Blue=ORF Green=Tags(s)

TTTTGTAATACGACTCACTATAGGGCGGCCGGAATTCGTCGACTGGATCCGGTACCGAGGAGATCTGCC
GCC**CGATCGCC**

ATGGAGAAGCAAGAAGGATGGCCACCAGGCTGTGCTCAATGAAGGGGAGGAGAATGAGCTGGAGGTGT
TTGGCTACCATACCCAGAATTTACGGAGAGCACTGTGCCTTGTCACAGCCATCCTGACTCTTGGGCGAGT
TCAGCTGATGTTCTACTGGAGGCTGAGTGGTGGGTGGACCAGTTGCATCCCATGCCCTTGAAGAA
GCAGACACAATTTGCTGAGGACAACCGATGAATTTCAAGATATATGAGGAAAAAGGTCTTCTGCCTCC
ACTTATCCACACTGAAGTTTCTATAAGCAAGAACCAGAGGAACCTCTGGTAGCTGACCACCACACTCAGT
CATAAACCAAGCTGTGATGAAGCCAGAACTAAAACACTACGATGCATCCAAGTGCAGAAAAAAGGTACGTT
TGGGATTTCTTGAAGAAGCGATTTCAAGAAAGTTGGGTTGCTGGAAGACAGTAACCTCTGCTTTGACATCC
ACCATACGTTTGGATTGGGTCTGACCAATGAAGAGCAAGAGGTCAGAAGGTTAGTGTGTGGGCCCAACTC
GATCGAGGTGGAGATCCAACCCATATGGAAGCTGCTTGTAAACAGCAATCAGTTAAGCTACACAAGCTT
GTGGAGGAGCACAAAGTCCAGGTCACGATCACAGTAAGAGACAAAGGCTACAGGAGCTGGAGTCCC
GTCTCCTGGTCCAGGAGATATTCTCATTCTTCCAGGGAAAATTTCACTGCCCTGTGATGCTATCTTGAT
CGATGGGAGTTGTGTGGTGAATGAAGGAATGCTCACAGGAGAAAGTATACCTGTTACAAAGACACCATTG
CCCCAACGGAGAACACCATGCCCTGGAATCGCACAGTTTGGAGGACTACCGAAACACGTTGCTCTTCT
GTGGAACAGAAGTTATTCAGGTCAAGCCATCTGCTCAGGGGCTTGTAGAGCTGTTGTTCTGCAGACAGG
TTATAATACAGCCAAAGGAGACTTGTGAGATCCATCCTCTACCTCGACCTCTGAACCTCAAACCTGTAT
AATGATGCCTTCAAGTTCATGGTGTCTGCTGCGTTGGTGTGTGGGATTTTTCTATGCCCTAGGTG
TCTATATGTACCATGAAGTACCTCCGAGAGAACTGCAACCATGGCCCTGATCCTTCTCAGTGCCACCGT
CCCTCCCGTGCTCCCGGCTGCACTGACCATAGGCAACGTGTACGCCAGAAAGAGGTTGAAGAAGGAGAAG
ATTTTCTGTATCTCCCCGAGAGAATCAACATGTGTGGTCAGATCAACCTCGTGTGCTTCGACAAAAACAG
GAACTCTGACAGAAGATGGGCTGGACCTCTGGGGACTGTCCCCACCGCTGGCAACTGTTCCAGGCAGT
CCACAGCTTTCCTCAGGTGAGGCTGTGCCCTGGGGCCACTGTGTGCAGCCATGACTAGCTGCCATTCT



[View online >](#)

CTGATCCTTCTTGATGGGACCATCCAAGGAGACCCTTTGGACCTCAAAATGTTTGAAGGCACTGGTTGGA
ATATGGAAGATAGCCAAGTGGCCTCCTGCAAATTTGGCATGGCAGATTCAAGCACAGTAATAAACCCAGG
ACCGAAAGCCAGCCAGAGTCCTGTGGACAGCATCACCATCTTGCGCCAGTTTCCATTTTCTCAGGCCTG
CAAAGGATGTCTGTGATTGCTCAGCTGGCTGGTGACCTTACCTCCACGTCTACATGAAGGGAGCCCCAG
AAATGGTGGCCAGGTTCTGCCGCTCTGAAACGGTGCCTAAGAATTCTCGCAGGAGCTGAGGAATTACAC
AGTGCAAGGCTCCGAGTCATTGCTCTTGCCACAAAACCCTAAAGATGGAGAGGCTTTCAGATATGGAC
CATCTAGCAAGGGAGAAAAGTGGAGTCTGAGTTGGCCTTCTGGGACTTCTCATAATGGAGAATCGTTGA
AAAAGGAAACAAGGCCAGTGTGAAGGAGCTGAGTGAGGCCCGCATCAGGACCGTATGGTTACAGGTGA
CAATCTTCAAACCTGCCATCACTGTTGCTAAAAATTCTGAAATGATTCTGTGGGACGCCAGGTCGTCATT
GTCGAGGCTAATGAGCCAGGAGACCTTGTCTGCTTCTGTGACCTGGCAGCTGGTGGGGACCCAAGAGC
CAGGCTCTGGGAAGAAGGACACCTACATTGACATCGGAAACAGCTCTGTACCTGCTGGGAAAGGTTACCA
TTTTGCAATGAGTGGGAAGTCATACCAAGTGTTATTTTCATCATTCTACAGCATGCTGCCACAAATCTG
GTTAATGGAACCATTTTTGCAAGAATGTCTCCTGGGCAGAAGTCAAGCCTCGTGGAGAGTTTCAGAAAT
TAAATTATTATGTGGCATGTGTGGAGATGGAGCCAATGACTGTGGGCTTTGAAATGGCTCATGCTGG
CATCTCACTATCAGAACAGGAAGCATCCGTGGCATCTCCCTTACCTCGAAAACAGCCAATATCGAGTGT
GTGCTCATCTCATCAGGAGGGCCGGGCTGCTCTGGTCTCATCCTTCGGTGTATTTAAATACCTGACTA
TGTACGGCATCATCCAGTTTATTGGAACATCACTTCTGTACTGGCAACTACAGCTCTTGGTAACTACCA
GTACCTCCTGCAAGATGTGGCCATCACGCTGATGGTCAGCTTAACAATGAGCATAAACCATGCTACCCG
AAGTTGGCTCCCTACAGACCAGCAGGACAACCTACTTTCTCCTCAGTTGCTACTCTCAGTCTTCATGAATT
CCTGTTTTACCTGCATTGTGCAAGTGTGTACATTTCTCACCGTAAACAGCAGCCTTGGTACTGCGAGGT
CTACAAATACAGTGAATGCTTTCTGGTCAACCAAAGTAACTCTCAGCCAACGTGAGTTTGGACCGAAAC
TGGACTGGAAATGCAACTCTGGTCCCGCTTCTGTGCTAAGTTTCGAGGGCACTACGTTGTGGCCCATCG
TCACCTTCAACTGCATCTCTGCAGCATTTATTTTTCTAAGGAAAGCCGTTTCGGAAACCCATCTACGC
AAACTATTTATTTCCCTTCTGCTGGCATCTGCTGCGGGCCTCACTATTTTCATTCTGTTTTGTGATTTT
CAAGACCTGTACCGTAAAATGGAGTTCATCCCAACCCACATCATGGAGAGTTTCAATTCTGATAGCAG
CTTTTGTCCAGTTCTGCGTTGCCTTCTTTGTAGAGGATGCCGTCCTTCAAAACAGAGAGCTCTGGCTGTT
TATCAAGAAAGAATTTGGATTCTACTCCAAAAGTCAGTATAGGATCTTGACAGAGAAAGCTGGCAGAGGAC
TCTACATGGCCTCCCGTGAACAGGACAGATTATGCAGTCAATGGCAAAAATGGATTCTATGTCAACAGAG
CCTATGAGAGCCCCGAAGAGGTCCCAAAGGGAAGCTCAAGCTGGAAGAGCAGGCTTCAAGACAGCACTT
TTGGACTAGACTG

ACGCGTACGCGGCCGCTCGAGCAGAAACTCATCTCAGAAGAGGATCTGGCAGCAAATGATATCCTGGATT
ACAAGGATGACGACGATAAGGTTTAA

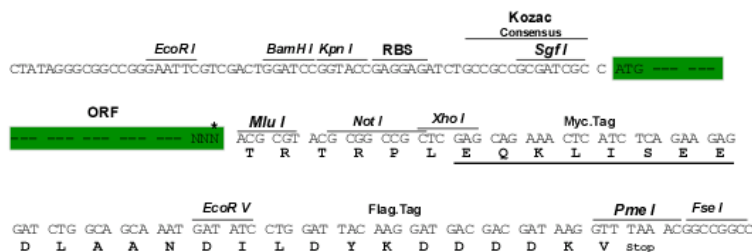
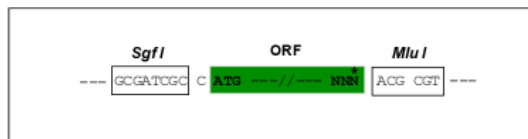
Protein Sequence: >MR231649 representing NM_001284375
 Red=Cloning site Green=Tags(s)

```
MEKSKKDGHQAVLNEGEENELEVFYHTQNLRRALCLVTAAILTLGAVQLMFYWRPEWVWVWTSICPCPLQE
ADTILLRTTDEFRRYMRKKVFLHLSTLKFPI SKNPEEPLVADHHSVINQAVMKPELKLRCIQVQKIRYV
WDFLKKRFQKVGLLEDNSCFDIHHTFGLGLTNEEQEVRRLVCGPNSIEVEIQPIWKLLVKQQSVKHLKL
VEEHNKVQVTITVRDKGLQELESRLLPDILILPGKISLPCDAILIDGSCVVNEGMLTGESIPVTKTPL
PQTENTMPWKSHSLEDYRKHVLF CGTEVIQVKPSAQLVRAVVLQTGYNTAKGDLVRSILYRPLNFKLY
NDAFKFMVFLACVGVGFFYALGVYMYHEVPPRETATMALILLSATVPPVLPAAALTIGNVYAQKRLKKEK
IFCISPQRINMCGQINLVCFDKTGTLTEDGLDLWGTVP T AGNCFQAVHSFASGEAVPWGPLCAAMTSCHS
LILLDGTIQGDPLDKMFEFGTWNMEDSQVASCKFGMADSSTVIKPGPKASQSPVDSITILRQFPFSSGL
QRMSVIAQLAGDLHLHVYMKGAPEMVARFCRSETVPKNFSQELRNYTVQGF RVIALAHKTLKMERLSDMD
HLAREKVESELAFLG LLIMENRLKKETRPVLKELSEARIRTVMVTGDNLQTAITVAKNSEMIPVGSQVVI
VEANEPGDLVPASVTWQLVGTQEPGSGKDYIDIGNSSVPAGKGYHFAMSGKSYQVLFHHFY SMLPQIL
VNGTIFARMSPGQKSSLVEEFQKLNYYVGMCGDGANDCGALKMAHAGISLSEQEASVSPFTSKTANIEC
VPHLIREGRAALVSSFGVFKYLTMYGIIQFIGTSLLYWQLQLFGNYQYLLQDVAITLMVSLTMSINHAYP
KLAPYRPAGQLLSPQLLSVFMNSCFTCIVQVCTFLT VTKQPWPYCEVYKYSECFLVNQSNLSANVSLDRN
WTGNATLVPASVLSFEGTTLWPIVTFNCISAAFIFSKGKPF RKPIYANYLFSLLLASAAGLTIFILFCDF
QDLYRKMFIPTPTSWRVSILIAAFVQFCVAFFVEDAVLQ NRELWLF IKKEFGFYKSKSQYRILQRKLAED
STWPPVNRD YAVNGKNGFYVNRAYESPEEV PKGKLEEQASEQHFWTRL
```

TRTRPLEQKLISEEDLAANDILDYKDDDDKV

Restriction Sites: SgfI-MluI
Cloning Scheme:

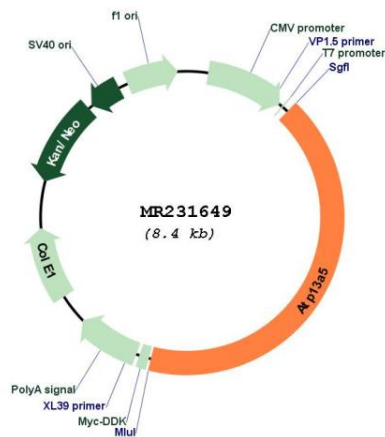
Cloning sites used for ORF Shuttling:



* The last codon before the Stop codon of the ORF

ACCN: NM_001284375
ORF Size: 3513 bp

OTI Disclaimer:	The molecular sequence of this clone aligns with the gene accession number as a point of reference only. However, individual transcript sequences of the same gene can differ through naturally occurring variations (e.g. polymorphisms), each with its own valid existence. This clone is substantially in agreement with the reference, but a complete review of all prevailing variants is recommended prior to use. More info
OTI Annotation:	This clone was engineered to express the complete ORF with an expression tag. Expression varies depending on the nature of the gene.
Components:	The ORF clone is ion-exchange column purified and shipped in a 2D barcoded Matrix tube containing 10ug of transfection-ready, dried plasmid DNA (reconstitute with 100 ul of water).
Reconstitution Method:	<ol style="list-style-type: none"> 1. Centrifuge at 5,000xg for 5min. 2. Carefully open the tube and add 100ul of sterile water to dissolve the DNA. 3. Close the tube and incubate for 10 minutes at room temperature. 4. Briefly vortex the tube and then do a quick spin (less than 5000xg) to concentrate the liquid at the bottom. 5. Store the suspended plasmid at -20°C. The DNA is stable for at least one year from date of shipping when stored at -20°C.
RefSeq:	<u>NM_001284375.1, NP_001271304.1</u>
RefSeq Size:	4400 bp
RefSeq ORF:	3516 bp
Locus ID:	268878
UniProt ID:	<u>Q3TYU2</u>
Cytogenetics:	16 B2
MW:	132 kDa

Product images:


Circular map for MR231649