

Product datasheet for MR231623

Atp9b (NM_001201569) Mouse Tagged ORF Clone

Product data:

Product Type:	Expression Plasmids
Product Name:	Atp9b (NM_001201569) Mouse Tagged ORF Clone
Tag:	Myc-DDK
Symbol:	Atp9b
Synonyms:	AA934181; Atpc2b; I1b; MMR
Mammalian Cell Selection:	Neomycin
Vector:	pCMV6-Entry (PS100001)
E. coli Selection:	Kanamycin (25 ug/mL)
ORF Nucleotide Sequence:	>MR231623 representing NM_001201569 Red=Cloning site Blue=ORF Green=Tags(s)

TTTTGTAATACGACTCACTATAGGGCGGCCGGAATTCGTCGACTGGATCCGGTACCGAGGAGATCTGCC
GCC**CGATCGCC**

ATGGCGGACCAGATTCCCTGTACCCCGTGCAGCGCGGGCGCCGAGCCAGCCACAGACGTGCGGCCCT
ACTACAGCTCCGCCGGGCCGGGCCCGGTGCCAGCCGGCGCGGCAGGTACCAGCTGGAGGATGAGTCTGC
CCATTTGGATGAAATGCCACTGATGATGTCTGAAGAAGGCTTTGAGAATGATGAAAGTGATTACCACACA
TTACCTCGAGCTAGGATAACACGGAGAAAGAGAGGACTGGAGTGGTTTGTCTGTGGAGGATGGAAGTTCC
TCTGTACCAGTTGCTGTGATTGGCTAATAAATGTTTGTCAAAGGAAGAAAGAGCTAAAAGCTCGAACAGT
ATGGCTTGGATGTCCAGAGAAGTGTGAAGAGAAACATCCTAGGAATTCATCAAAAATCAGAAAACAAT
GTATTTACCTTTATACCTGGGGTTTTGTATGAACAATCAAGTTTTTCTGAATCTCTATTTTCTGGTAG
TGTCTGTCTCACAGTTTGTACCAGCATTGAAAATTGGCTACCTCTACACCTACTGGGCTCCTCTGGGATT
TGTTTTGGCCGTTACGATTGCACGTGAAGCGATTGATGAATTTTCGACGTTTTTCAGCGAGACAAGGAAATG
AATTCACAGTTATATAGCAAGCTTACAGTAAGAGGTAAGTTCAAGTTAAGAGCTCAGACATACAAGTTG
GAGACCTCATCATAGTGGAAAAGAACCAAAGAATCCATCAGATATGGTATTTCTTAGAAGTTGAGAGAA
AGCAGGTTTCATGTTTTATCCGCACGGACCAGCTAGATGGTGAGACTGACTGGAAGCTGAAGTGGCGGTG
AGCTGCACACAACGGCTGCCAGCCCTCGGGACCTTTTTTCTATCAGTGCCTATGTTTATGCTCAGAAGC
CACAACCTGGATATTCATAGCTTTGAAGGAACATTTACCAGGGAAGACAGTATCCTCCCATTCATGAGAG
TCTCAGCATAGAGAACAACCTCTGTGGCAAGCACTATTGTTGCATCAGGACTGTAATAGGTGTTGTCATT
TATACTGGAAAAGAGACTCGAAGTGAATGAACACATCCAATCCAAAAAATAAGTTGGTTTATTGGACC
TCGAACCTCAATCAGCTGACAAAGCGCTATTTCTGGCTTAGTTGTTCTTTCTGTTGTTATGGTAACCTT
ACAGGGATTTGCAGGCCCATGGTACCGTAATCTTTTTCGGTTCTCTCTCTTTTCTACATCATTCCC
ATAAGTCTGCGAGTAACTTGGATATGGCAAAGCAGCATATGGATGGATGATTATGAAAGATGAGAATA
TTCTGTTACAGTTGTTCCGACCAGCACAATACCAGAAGAACTTGGACGCTGGTACTACTGACAGA
CAAAACAGGGACGCTCACTCAGAATGAAATGGTATTTAAGCGGCTCCATCTGGGACTGTCTCTACGGA



[View online >](#)

ACGGACACTATGGACGAAATCCAAAGTCACGTCCTGAATTCTACCTGCAGGTACACTCACAGCCAAGTG
GGCACAACCCAAGCTCTGCTCCACTGAGAAGAAGCCAGTCCTCAACGCCTAAAGTCAAGAAGAGCGTCAG
CAGTAGAATCCATGAAGCAGTGAAGGCCATTGCCCTTTGTATAATGTCACCTCTGTGTATGAGGCTCGG
GCTGGCATCACTGGGGAGACTGAGTTTGTGAAGCAGACCAAGACTTTAGTGATGAGAACCGCACCTACC
AGGCCTCCAGCCCGATGAGGTGGCACTGGTACGATGGACAGAGAGTGTGGGCTCACTCTGATCAGCAG
GGATCTTGCTTCCATGCAGCTGAAGACCCCAAGTGGCCAGGCTTGACCTACTGCATCCTACAGATGTTT
CCCTTCACTCCGAGAGCAAGCGGATGGGCATCATAGTCAGAGATGAATCCACAGCAGAAATTACATTCT
ATATGAAAGGTGCTGATGTCGCAATGTCCACCATTGTCCAGTACAATGATTGGCTAGAAGAGGAGTGTGG
AAACATGGCACGAGAGGGCCTGCGAACCTTGTGGTAGCCAAGAGGACTCTGACAGAAGAGCAATACCAG
GATTTTGAAGCCGATACAGTCAAGCCAACTGAGTATCCATGACCGGGCTCTGAAAGTCGCTGCTGTTG
TAGAAAGCCTGGAGAGAGAGATGGAGCTGTTGTGCCTCACTGGGGTGGAGGACCAGCTGCAAGCTGATGT
GAGGCCACACTAGAGATGCTGCGCAATGCAGGGATCAAGATTTGGATGCTAACAGGCGATAAACTGGAA
ACAGCTACTTGTATTGCCAAAAGCTCACACTTGGTGTCCAGAACACAAGACATTCATGTTTTAGACCAG
TAACCAGTCGGGGAGAAGCCATTTGGAGCTAAATGCGTTTAGAAGGAAGCATGACTGTGCACTGGTTAT
ATCTGGGGATTCTCTGGAGGTCTGCCTGAGGACTACGAGCATGAACTTGTGGAGCTGGCCTGCCAGTGC
CCTGCTGTGGTCTGCTGCGCTGCTCACCCACCCAGAAGGCCACATCGTGACCCGTGTACGCCAGCATA
CCAGAAAGCGCACCTGTGCCATCGGCGACGGAGGGAATGACGTGAGCATGATCCAGGCTGCTGACTGTGG
GATTGGGATTGAAGGAAAGGAGGGCAAACAGGCTTCTCTGGCAGCGGACTTCTCCATCACACAGTTCAGA
CACATCGGCAGGCTGCTCATGGTGCACGGACGGAACAGCTACAAACGGTCTGCAGCACTTGGCCAGTTTG
TCATGCACAGGGGCTCATCATCTCCACCATGCAGGCTGTGTTTTCTCAGTCTTCTACTTTGCATCTGT
ACCGCTGTACCAGGGATTCCTTATGGTAGGGTATGCAACTATCTACACCATGTTCCAGTGTTCCTCTTA
GTGTTGGACCAAGATGTAAGCCAGAGATGGCGATTCTCTACCCAGAGCTGTACAAGGACCTCACCAAGG
GAAGATCCCTTTCTTCAAGACCTTCTCATCTGGGTTTTGATCAGTATTTACCAAGGAGGCATCCTCAT
GTATGGGGCACTGCTGCTTTCGAGGACGAGTTTGTCCATGTTGTGGCCATCTCCTTACAGCGCTGATC
CTGACCGAGCTGCTCATGGTGGCCCTGACTATCAGGACGTGGCACTGGCTGATGGTTGTGGCGGAGTTCC
TCAGTCTGGGCTGCTATGTCGCCTCACTTGCTTTTCTAAATGAGTATTTGGTATAGGCAGAGTGTCTTT
TGGCGCTTTCTTAGATGTTGCCTTATCACAACCGTGACCTTCTTGTGGAAAGTGTAGCCATCACTGTG
GTCAGTGCCTCCACTCTACGTGCTCAAGTACTTGAAGAGAAAGCTGTCCCTCCAGCTACTCCAAGC
TGTCTCC

ACGCGTACGCGGGCGCTCGAGCAGAACTCATCTCAGAAGAGGATCTGGCAGCAAATGATATCCTGGATT
ACAAGGATGACGACGATAAGGTTTAA

Protein Sequence: >MR231623 representing NM_001201569
 Red=Cloning site Green=Tags(s)

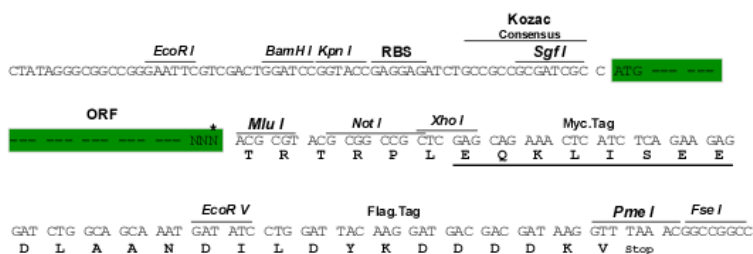
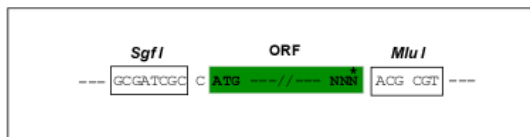
```
MADQIPLYPVRSAGAAASHRRAAYSSAGPGPGADRRGRYQLEDESAHLDEPLMMSEEGFENDES DYHT
LPRARITRRKRGLEWFVCGGWKFLCTSCCDWLINVCQRKELKARTVWLGCPEKCEEKHPRNSIKNQKYN
VFTFIPGVLYEQKFFLNLYFLVVSQSQFVPALKIGYLITYWAPLGFVLAVTIAREAIDEFRFRQDKEM
NSQLYSKLTVRGKVVQKSSDIQVGDLIIVEKNQRIPSDMVFLRTSEKAGSCFIRTDQLDGETDWKLVAV
SCTQRLPALGDLFSISAYVYAQKPQLDIHSFEGFTTREDSDPPIHESLSIENTLWASTIVASGTVIGVVI
YTKETRSVMNTSNPKNKVGLLDLELNQLTKALFLALVVLVVMVTLQGFAGPWYRNLFRLLLLFSYIIP
ISLRVNLDMGKAAYGWMIMKDENIPGTVVRTSTIPEELGRLVYLLTDKTGTLTQNMVFKRLHLGTVSYG
TDTMDEIQSHVLSYLVVHSQPSGHNPSSAPLRRSQSSTPKVKKS VSSRIHEAVKAIACHNVTVPYEAR
AGITGETEFAEADQDFSDENRTYQASSPDEVALVRWTEVGLTLISRDLASMLKTPSGQVLT YCILQMF
PFTSESKRMGIIVRDESTAEITFYMKGADVAMSTIVQYNDWLEEECGNMAREGLRTL VVAKRTL TEEQYQ
DFESRSYQAKLSIHDRALKVAAVVE SLEREMELLCLTGVEDQLQADVRPTLEMLRNAGIKIWMLTGDKLE
TATCIAKSSHLVSRTQDIHVFRPVTSRGEAHELNAFRRKHDCALVISGDSLEVCLRYEHELVELACQC
PAVVCCRCSPQKAHIVTLLRQHTRKRTCAIGDGGNDVSMIQAADCGIGIEGKEGQASLAADFSITQFR
HIGRLLMVHGRNSYKRSALGQFVMHRGLIISTMQAVFSSVFYFASVPLYQGF LMVGYATIYTMFPVFSL
VLDQDVKPEMAILYPELYKDLTKGRSLSFKTLIWWLISIIYQGGILMYGALLFEDEFVHVVAISFTALI
L TELLMVALTIRTWHWLMVVAEFLSLGCYVASLAFLENYFGIGRVSFGAFLDVAFITTVTFLWKVSAITV
VSCLPLYVLKYLKRKLSPPSYSKLSS
```

TRTRPLEQKLI SEEDLAANDILDYKDDDDKV

Restriction Sites: SgfI-MluI

Cloning Scheme:

Cloning sites used for ORF Shuttling:

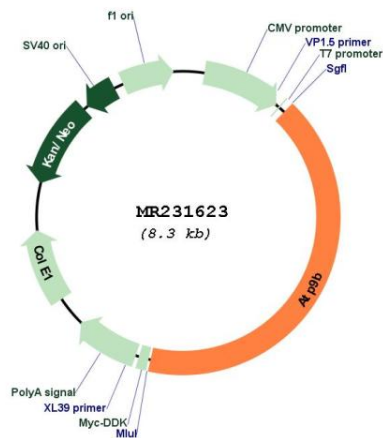


* The last codon before the Stop codon of the ORF

ACCN: NM_001201569

ORF Size: 3438 bp

OTI Disclaimer:	The molecular sequence of this clone aligns with the gene accession number as a point of reference only. However, individual transcript sequences of the same gene can differ through naturally occurring variations (e.g. polymorphisms), each with its own valid existence. This clone is substantially in agreement with the reference, but a complete review of all prevailing variants is recommended prior to use. More info
OTI Annotation:	This clone was engineered to express the complete ORF with an expression tag. Expression varies depending on the nature of the gene.
Components:	The ORF clone is ion-exchange column purified and shipped in a 2D barcoded Matrix tube containing 10ug of transfection-ready, dried plasmid DNA (reconstitute with 100 ul of water).
Reconstitution Method:	<ol style="list-style-type: none"> 1. Centrifuge at 5,000xg for 5min. 2. Carefully open the tube and add 100ul of sterile water to dissolve the DNA. 3. Close the tube and incubate for 10 minutes at room temperature. 4. Briefly vortex the tube and then do a quick spin (less than 5000xg) to concentrate the liquid at the bottom. 5. Store the suspended plasmid at -20°C. The DNA is stable for at least one year from date of shipping when stored at -20°C.
RefSeq:	<u>NM_001201569.1, NP_001188498.1</u>
RefSeq Size:	5477 bp
RefSeq ORF:	3441 bp
Locus ID:	50771
UniProt ID:	<u>P98195</u>
Cytogenetics:	18 E3
MW:	129.5 kDa

Product images:


Circular map for MR231623