

Product datasheet for MR231621

Dhx34 (NM_001285931) Mouse Tagged ORF Clone

Product data:

Product Type: Expression Plasmids
Product Name: Dhx34 (NM_001285931) Mouse Tagged ORF Clone
Tag: Myc-DDK
Symbol: Dhx34
Synonyms: 1200013B07Rik; 1810012L18Rik; Ddx34; mKIAA0134
Mammalian Cell Selection: Neomycin
Vector: pCMV6-Entry (PS100001)
E. coli Selection: Kanamycin (25 ug/mL)
ORF Nucleotide Sequence: >MR231621 representing NM_001285931
 Red=Cloning site Blue=ORF Green=Tags(s)

TTTTGTAATACGACTCACTATAGGGCGGCCGGAATTCGTCGACTGGATCCGGTACCGAGGAGATCTGCC
 GCCCGCATCGCC

ATGCCCTCTCCAGGACAAGGGAGGGGAGGGTCAACGAGACCGAGACCACCATCGAGCTCCAGGGAGG
 AAGAGGCCCGGAGAAATGGGACTGGAATTGTCCAGAGACTCGTTGTCTTTGGAAGATGTATTCTCCG
 CGATGAGGATTATATCCGTCGTGGTTCCAGAGGAGTGTGAGAAGTCTGGGCTTTCTTTGAACGCCTGCAG
 AGATTCCAGCACCTCAAGACCTCCAGAAGAAGGAGAAGGACCCCTGGCATGCCAAACATGGCATCGCTG
 CTTTAGCTGACCTACCTCTCACTTACGACCCACGCTACCGCATCAACCTCTCCATTCTCAGCCAGACAC
 TCGGGGTCGTATGGGCCCGGCAGGGGGCTGCCGCCGAGAGAGTGTCCGAGTTCGCCCGTGCATTGCTT
 CACTACCTAGACTTCCAGCAGAAGCAGGCTTTTGGGAGGCTCGTCAAACCTGCAGCGTGAGCGAGCGGCAC
 TTCCCATCGCCAGTATGGGAACCGCATCTGCAGACTCTCAAGGAACACCAGGTGGTGGTGGTGGCCGG
 GGACACAGGCTGTGGCAAGTCTACTCAGGTGCCAGTACTTGTGGCCCGCGGCTTCAGTCACGTGGCA
 TGCACTCAGCCCCGAGAATCGCTGCATCTCACTGGCCAAGCGGTTGGCTTCGAGAGCCTCAGTCAGT
 ATGGCTCCAGGTTGGCTACCAGATCCGCTTTGAAAGCACTCGGTCCGACGCCACCAAGATCGTGTCTCT
 GACGGTGGGGCTGCTCCTACGCCAGATCCAGCGTGAGCCAGCCTGCCAGTACCAGGTCCTGATCGTG
 GACGAGTCCACGAGCGACACCTGCACAATGACTTCTGCTGGGTGCTTGCAGCGCCTGTGCCCCAGC
 GGCTGACCTCAAGTCACTCCTCATGTCCGCCACCATCAACATCTCTCTTCTCCAGCTACTTCAGCCA
 TGCTCCGGTGGTGCAGGTGCCTGGGAGGCTCTTCCCATCACGGTAGTCTACCAGCCGAGGAGGCAGAC
 CAGACAGCATCCAAGTCAGAGAAGCTGGACCCACGGCCCTTCTGAGGGTGTGGAGGCCATCGACAATA
 AGTATCCCCCGAGGAGCGGGGGACCTTCTTGTCTTCTCAGTGGCATGGCGGAGATCACCACGGTGT
 GGACGCAGCCAGGCTTATGCCAGCCTCACCCAGCGTGGTGGTGTGCCGCTGCACAGCGCCCTCTCT
 GTGTCTGACCAGGACAAGGTGTTTCGATGTGGCTCCAGCTGGAGTCCGGAAGTGCATCTGTCCACCAACA
 TTGCCGAGACCTCAGTCACGATCGATGGCATCCGCTTCGTGGTGGATTCTGGGAAGTGAAGGAGATGAG
 CTACGACCCACAGGCCAACTGCAGCGGCTGCAGGAATTCGGATCAGCCAGGCCAGTGTGAGCAGCGC



[View online »](#)

AAGGGCCGAGCGGGCCGACGGGCCCGGCGTCTGCTACCGTCTCTATGCCGAGTCTGACTATGATGCCT
TTGCGCCGTACCCAGTCCCGAAATCCGCAGGGTGGCCCTGGATGCACTGGTGTTCAGATGAAGAGTAT
GAGTGTGGGGACCCACGCACCTTCCCCTTCATCGAGCCCCCTCCACCTGCCAGCGTGAAACCGCTATC
CTCTATCTCCAAGAGCAGGGGCCCTGGACAGCTCGGAGGCCCTCACCCCATCGGGTCCCTGCTGGCCC
AGCTGCCTGTAGATGTTGTAATTGGGAAGATGCTGATCCTCGGCTCCATGTTACAGCTGGCAGAGCCTGT
GCCACTGCCCGGAGACCCTGGAAGTGACCAGGGTGACCCCTCACACTCTTCAATGTCTTCAATGCCT
GGGTGCAGGTGAAGTCTGAGCGGAGCGGAACTCTCGAAAGTGGTGCCCGCCGGGGTGTGGAGGAGCA
CCGGCTGTATGAGATGGCCAACCTGCGGCGCCAGTTCAAGGAGCTGTTGGAGGATCATGGATTGCTGAGT
GGGGCCAGGTAGTGGCCCAGGGGACAGCTACAGTCGGCTGCAGCAGCGCCGAGAGCGCAGGGCCCTGC
ACCAGCTGAAGCGACAGCATGAGGAGGGTGGGGGACGCAGGCGCAAGGTGCTGAGGCTGCAGGAGGATGG
CTGCTCCAGCGATGAAGAGGACCGAGAGGGCTCTACCTCCAGAGGGCTGACAGCGTTGACATCCAGGAT
GTGAAATCAAGCTTCGGCACAACTGGAGCAGCTGCAGGCAGCTGCCAGCTCAGCCAGGACCTGACCC
GAGACCAACTGGCCCTGCTCAAGCTGGTCTCGGGCGGGGGTGTACCCACAGCTGGCTGTGCCCGATGC
GTTCAACAGTGGCCGCAAGGACTCAGACCAGATTTCCACACGCAGGCCAAGCAGGGCACCGTGTGCAC
CCACCTGTGCTTTGCCAACAGCCCTGAGGTATTACACACACAGGGGCAGGAGGCTCAGGCCAAGAAG
GGAGCCAAGATGGCAGGGACCAATGAGCTGCAAGCATCAGCTGTGGCCTTCGTCTCCCTACTGGAGAC
CAACAAGCCATACCTGGTGAAGTGCCTCAGAATCCCGGCCCTCCAGTCCCTCCTGCTGTTAGCCGCTCC
ATTGACACCAACGGTACTGCTCCCGCTGGTGGCTGACGGTTGGCTAGAGCTGCAGCTCGCAGATAGCG
AGAGTGCCGTCCGGCTCCTGGCAACATCCCTGCGGCTCCGTGTCCACTGGGAAAGTGCCTGGACCGGCA
GCTGGCCCGCCAGGCCAGCGACGGAAGCTAGAGCAGGAGGAAGACATGGGGTCTCCAGCAGTACGCCCC
CAGGAGGTGGCTGCTCTGAGCAGGGAGCTGCTGCAGTTCATGGTGCCAAGGTTCCCTACCGCTCCGAA
GGCTCACTGGTCTAGAAGCCCAGAACCTCTACGTGGGACCCAGACCATCACGACCGCCCTAGTCTGCC
CGGCTCTTTGGAAATTCTACCCTGTCTCCACACCCACCAAGGGGGGCTACGCTGTCTCTGATTATCTC
ACCTACAAGTGCCTCACGAGTGACACTGACCTGTACAGTACTGTCTGCGTTCCCTTGGACCTGCCAC
ACTGTGGCTGCACATGCCCTTACACCCTTGGAGCGCATTGCTCATGAGAACACCTGCCCTGAGGCGCC
AGGCGATGATCCAGGGTCTGAGGAGGCTGCTCCTGCACCACCACAGAAGACATCAGCCCTGCAGAGGCC
TACCACTGCCAGGTGTGCGGGCAGGACTTCTCTTACCCCAACTGAGGTAAGACATCGAAGGCAGC
ATGTC

ACGCGTACGCGGCCGCTCGAGCAGAACTCATCTCAGAAGAGGATCTGGCAGCAAATGATATCCTGGATT
ACAAGGATGACGACGATAAGGTTTAA

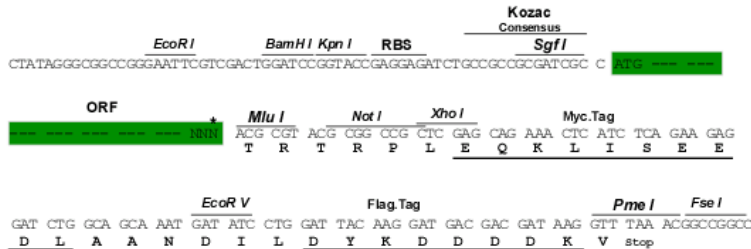
Protein Sequence: >MR231621 representing NM_001285931
 Red=Cloning site Green=Tags(s)

MPPPRTRREGRHRDRDHRAPREEEAPEKWDWNCPETRCLLEDVFFRDEDIYIRRGSEECQKFWAFFERLQ
 RFQHLKTSQKKEKDPGMPKHGIAALADLPLTYDPRYRINLSILSPDTRGRHGPGRGLPPERVSEFRALL
 HYLDFQKQAFGRLLVKLQREAAALPIAQYGNRILQTLKEHQVVVAVAGDTGCGKSTQVPQYLLAAGF SHVA
 CTQPRRIACISLAKRVGFESLSQYGSQVGYQIRFESTRASAATKI VFLT VGLLLRQIQREPSLPQYQLIV
 DEVHERHLHNDFLLGVLQRLLPQRPD LK VILMSATINISL FSSYF SHAPVVQVPGRLFPITVVYQPQ EAD
 QTASKSEKLDPRPFLRVLEAIDNKYPPEERGDLLVFLSGMAEITTVL DAAQAYASLTQRVWVPLPHSALS
 VSDQDKVFDVAPAGVRKILSTNIAETSVTIDGIRFVVD SGVKVEMSYDPQAKLQRLQEFWISQASAEQR
 KGRAGRTGPGVCYRLYAESDYDAFAPYVPEIRRV ALDALVLMKMSVGDPRTFPFIEPPPPASVETAI
 LYLQEQGALDSSEALTPIGSLLAQLPVDVVIKMLILGSMFSLAEPVLTIAAALSQVSPFTRSAQSNLDC
 ATARRPLESDQGPFTLFNVFNWVQVKSERSGNSRKWCRRRGVEEHL YEMANLRRQFKELLEDHGLLS
 GAQVVAPGDSYSRLQQRRERRALHQLKRQHEEGGRRRKVLR LQEDGCSSEEDREGSTSQRADSVDIQD
 VKFKLRHNLEQLQAAASSA QDL TRDQLALLKLVLGRGLYPQLAVPDAFNSGRKDSQDQIFHTQAKQGTVLH
 PTCVFANSPEVLHTQGQEA SGQEGSQDGRDQMSCKHQLLAFVSLLETNKPYLVNCRIPALQSLLLFSRS
 IDTNGDCSRLVADGWLELQLADSESAVRL LATSRLRVHWESALDRQLARQAQRRLKEQEEDMGSPAVSP
 QEVAALSRELLQFMVAKVPYRLRRLTGLEAQNLYVGPQTIT TAPSLPGLFGNSTLSPHPTKGGYAVSDYL
 TYNCLTSDTDLYSDCLRSFWTCPHCGLHMPFTPLERIAHENTCPEAPGDDPGSEE AAPAPPQKTSALQRP
 YHCQVCGQDFLFTPTEVLRHRRQHV

TRTRPLEQKLISEEDLAANDILDYKDDDDKV

Restriction Sites: SgfI-MluI
Cloning Scheme:

Cloning sites used for ORF Shuttling:



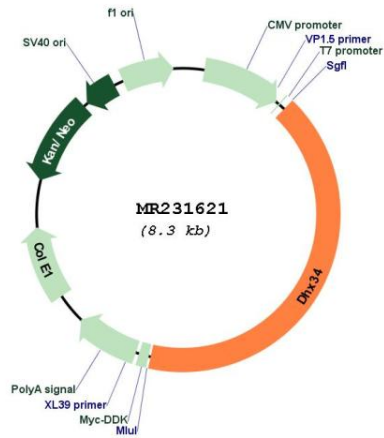
* The last codon before the Stop codon of the ORF

ACCN: NM_001285931

ORF Size: 3435 bp

OTI Disclaimer:	The molecular sequence of this clone aligns with the gene accession number as a point of reference only. However, individual transcript sequences of the same gene can differ through naturally occurring variations (e.g. polymorphisms), each with its own valid existence. This clone is substantially in agreement with the reference, but a complete review of all prevailing variants is recommended prior to use. More info
OTI Annotation:	This clone was engineered to express the complete ORF with an expression tag. Expression varies depending on the nature of the gene.
Components:	The ORF clone is ion-exchange column purified and shipped in a 2D barcoded Matrix tube containing 10ug of transfection-ready, dried plasmid DNA (reconstitute with 100 ul of water).
Reconstitution Method:	<ol style="list-style-type: none">1. Centrifuge at 5,000xg for 5min.2. Carefully open the tube and add 100ul of sterile water to dissolve the DNA.3. Close the tube and incubate for 10 minutes at room temperature.4. Briefly vortex the tube and then do a quick spin (less than 5000xg) to concentrate the liquid at the bottom.5. Store the suspended plasmid at -20°C. The DNA is stable for at least one year from date of shipping when stored at -20°C.
RefSeq:	NM_001285931.1 , NP_001272860.1
RefSeq Size:	4310 bp
RefSeq ORF:	3438 bp
Locus ID:	71723
UniProt ID:	Q9DBV3
Cytogenetics:	7 A2
MW:	128.6 kDa
Gene Summary:	Probable ATP-binding RNA helicase.[UniProtKB/Swiss-Prot Function]

Product images:



Circular map for MR231621