

Product datasheet for MR231617

Atp11a (NM_001293668) Mouse Tagged ORF Clone

Product data:

Product Type: Expression Plasmids
Product Name: Atp11a (NM_001293668) Mouse Tagged ORF Clone
Tag: Myc-DDK
Symbol: Atp11a
Synonyms: 4930558F19Rik; Atpc1h; AU040868; lh
Vector: pCMV6-Entry (PS100001)
E. coli Selection: Kanamycin (25 ug/mL)
Cell Selection: Neomycin
ORF Nucleotide Sequence: >MR231617 representing NM_001293668
Red=Cloning site Blue=ORF Green=Tags(s)

TTTTGTAATACGACTCACTATAGGGCGCCGGGAATTCGTCGACTGGATCCGGTACCGAGGAGATCTGCC
GCC**CGATCGCC**

ATGGACTGCAGTCTATTGAGGACGCTCGTGCGCAGATACTGTGCAGGGGAAGAGAACTGGGTGGACAGTC
GGACCATCTACGTGGGACACAAGGAGCCCCCTCCGGGTGCAGAGGCCTACATTCCACAGAGATACCCCGA
CAATAGAATCGTCTCCTCCAAGTACACATTCTGGAACCTCATACCAAGAAGTATTTGAACAGTTCAGA
AGAATAGCCAACCTTTATTTCTCATCATCTTCTGGTACAGTTGATCATCGACACACCCACAAGTCCAG
TGACAAGCGGGCTCCCACTCTTCTCGTCATCACTGTCACGGCCATCAAGCAGGGCTATGAAGACTGGCT
TCGCCACAAGGCCGACAACGCCATGAACCAAGTGTCCCCTGCATTTATCCAGCATGGCAAGCTGGTCCGC
AAGCAGAGTCGGAAGCTGAGGGTTGGGGACATTGTGATGGTGAAGGAAGATGAGACCTTTCCCTGTGACC
TGATCTTTCTCTCCAGCAACCGGGCAGATGGGACATGCCATGTCACACTACAGCCAGCTTAGACGGAGATC
GAGCCATAAACTCACTACGCAGTGCAGGATACCAAGGGCTTCCACACAGAGGGCGGATGTTGACAGCTTG
CACGCCACGATCGAGTGTGAACAGCCACAGCCTGACCTCTACAAGTTTGTGGGGCGCATCAATGTTTACA
ACGACCTGAACGACCCTGTAGTGAGGCCTTTGGGGTCAAGAACTGCTTCTCAGAGGAGCCACACTCAA
AAACACAGAGAAGATCTTTGGTGGCTATCTACACAGGCATGGAGACCAAGATGGCCCTGAACATCAA
TCCAAGTCCCAAAAGAGATCTGCTGTGAAAAGTCAATGAACACATTCCTGATCGTGTACCTCTGCATCC
TGGTGAGCAAGGCCCTGATCAACACGGTGTGAAGTACGTGTGGCAGAGTGAAGCCCTCCGAGATGAGCC
ATGGTACAACGAGAAGACCGAATCCGAGCGCCAGAGGAATTTGTTCTCAGGGCCTTCCAGACTTCTCTG
GCCTTCATGGTCTCTTCAATTACATCATCCCCGTATCCATGTACGTACCCTGGAGATGCAGAAGTTCC
TCGGCTCTACTTCATCACCTGGGATGAGGACATGTTTGTGAGGAAATGGGGAAAGGCCCTCTGGTCAA
CACATCTGATCTGAATGAGGAGTTGGGACAGGTGAATACATCTTCACTGACAAGACCGGCACGCTTACA
GAGAACAACATGGCCTTCAAGGAGTGTGCATCGAGGGCCATGTCTACGTACCCCATGTCTGCAATG
GGCAGGTCTTCCGACTCTTCTGGCATTGACATGATCGATTCTTCCCGGAGTCTGTGAAGGGAAACG
GGAGGAGCTGTTTTTCAGGGCCATCTGCCTGTGCCACACTGTCCAAGTGAAGATGACCATTTGTGGGGAT
GATGTCGATGGTCCCGAAATCTCCAGATGCAAAATCTGTGTACATATCGTCTCGCTGATGAGG



TTGCACTGGTCTGAAGGCGTGCAGAGGCTTGGATTACGCTACCTGAGGCTGAAGGACAATTACATGAAAT
 ACTGAACAGGGGAGAACGACATAGAGAGATTTGAATTGCTAGAAGTCTGACCTTTGATTCTGTGCGGAGA
 AGAATGAGTGTGATTGTAAGTCTACTACAGGAGAAATTTATCTGTTTTGCAAAGGAGCAGATTCTTCAA
 TATTTCCCGAGTGATAGAAGGCAAAGTAGACCAGGTCGGTCTAGAGTGGAGCGCAATGCCGTGGAAGG
 GCTGCGAACCCGTGTGTGCATACAAGAGGCTCGAGCCAGAGCAGTACGAAGATGCTTGCCGACTGCTA
 CAGAGTGCCTAAAGTGGCGCTTCAGGACCGGAGAAAGCTGCCAGAAGCCTACGAGCAGATAGAGAAGG
 ACCTTGTCTGCTTGGTCTACGGCTGTTGAGGACAGGCTCCAGGAGAAAGCTGCTGACACAATTGAGGC
 ACTACAGAAGGCAGGCATCAAGGTCTGGGTGCTCACCGGGGACAAGATGGAGACAGCATCCGCCACCTGC
 TATGCCTGCAAGCTGTTCCGAGGAGCAGCAGCTGCTGGAGCTGACCACCAAGAAGCTAGAGGAGCAGA
 GCCTGCACGATGTGCTCTTCGACCTGAGCAAGACAGTGTGCGCTGCAGCGGGAGCATGACCAGGGACTC
 CTTCTCGGGGCTCTCCACAGATATGCACGACTATGGTTTAAATCATCGATGGAGCAGCACTGCTTGTATA
 ATGAAGCCGAGAGAGGACGGGAGCTCCTCGGGCAACTACCGAGAGCTCTTCTGGAGATGTCAGGAACT
 GCAGTGTGTGCTGTGCTGCCGGATGCCACCTTGAGAAGGCCAGATCGTTAAGTTAATCAAATTTTC
 AAAGGAGCATCCTATTACCTTAGCAATGGTGATGGTGCAATGATGTCAGTATGATCCTGGAGGCCAC
 GTGGGCATAGGTGTCATCGGAAAGAGGGTCCAGGCTGCAAGGAACAGCGACTATGCAATACCAAGT
 TTAACACTTAAAGAAGATGCTTCTTGTTCATGGGCATTTTTATTATATCAGGATATCTGAGCTTGTGCA
 ATACTTCTTTTATAAGAAGCTGCTTCTTCTTCCCTCAGTTTTTGTACAGTCTTCTGCGGATTTTCA
 CAGCAGACTTTGTACGATACTGCGTATCTGACTCTTACAACATCAGTTCACTTCCCTCCCGATTCTCC
 TGTACAGCCTCATGGAGCAGCAGTGGGCATTGACGTGCTCAAGAGAGACCCGACCCTCTACAGAGACAT
 TGCCAAGAATGCGCTGCTGCGTGGCGGGTGTTCATTTACTGGACGTTTTCTCGCGTTTTTGACGTTTTG
 GTATTTTTCTTTGGTCTATTTTCATATTTGAGAACACAACCGTGACCATCAACGGACAGATGTTTGGGA
 ACTGGACCTTCGGGACGCTGGTGTCTACTGTGATGGTGTCTACTGTCACACTGAAGCTCGCACTGGACAC
 GCACTACTGGACTGGATCAACCACTTTGTCATCTGGGGTTCGCTGCTTCTACATTGCTTCTCCCTG
 CTCTGGGAGGGGTTATCTGGCCGTTCCCTCAGTTACCAGAGGATGACTATGTGTTTATCATATCCATGCTGT
 CCAAGTGGGCTGCTGGCTGGGTATCATACTGCTTGTACGCTGGCCTCCTCCCTGACGCTCCTCAAGAA
 GGTCTGTGTAGGACGCTGTGGCCACGGCAACGGAGAGAACTCAGGCCAGGAACAAGTGCCTTTCTGTT
 GAGCAGCCACCCTTTTATGCTTTCCAGACCAGTGTGAGTTTC

ACGCGTACGCGGCCGCTCGAGCAGAACTCATCTCAGAAGAGGATCTGGCAGCAATGATATCCTGGATT
 ACAAGGATGACGACGATAAGGTTTAA

Protein Sequence:

>MR231617 representing NM_001293668
 Red=Cloning site Green=Tags(s)

MDCSLLRTLVRRYCAGEENWVDSRTIYVGHKEPPPGAEAYIPQRYPDNRIVSSKYTFWNFIPKNLFEQFR
 RIANFYFLIIFLVQLIIDTPTSPVTSGLPLFFVITVTAIKQGYEDWLRHKADNAMNQCVPVHFIQHGKLV
 KQSRKLRVGDIVMVKEDTFPCDLIFLSSNRADGTCHVTASLDGESSHKTHYAVQDTKGFHTEADVDSL
 HATIECEQPQPDLYKFVGRINVYNDLNDPVVRPLGSENLRLRGATLKNTEKIFGVAIYTMETKMALNYQ
 SKSQKRSAAVEKSMNTFLIVYLCILVSKALINTVLKYVWQSEPFREDEPWYNEKTESERQRNFLRAFDL
 AFMVLFNVIIPVSMYVTVEMQKFLGYSFITWDEDMFDEEMGEGPLVNTSDLNEELGQVEYIFTDKGTLT
 ENNMAFKECCIEGHVYVPHVICNGQVLPDSSGIDMIDSSPGVCGREREELFFRAICLCHTVQVKDDHCGD
 DVDGPQKSPDAKSCVYISSSPDEVALVEGVQRLGFTYLRKLDNYMEILNRENDIERFELLEVLTFDSVRR
 RMSVIVKSTTGEIYLFCKGADSSIFPRVIEGKVDQVRSRVERNAVEGLRTL CVAYKRLEPEQYEDACRLL
 QSAKVALQDREKKLAEAYEQIEKDLVLLGATAVEDRLQEKAADTIEALQKAGIKVWVLTGDKMETASATC
 YACKLFRRSTQLLELTTKKLEEQSLHDVLFDL SKTVLRCSGSMTRDSFSGLSTDMHDYGLIIDGAALSLI
 MKPREDGSSSGNYRELFLIEICRNCSAVLCCRMAPLQKAQIVKIKFSKEHPITLAIIGDGANDVSMILEAH
 VGTGVIKKEGRQAARNSDYAIPKFKLKKMLLVHGHFYIRISELVQYFFYKNVCFIFPQFLYQFFCGFS
 QQTLYDYATLTLNYSFTSLPILLYSLMEQHVGDVLRDPTLYRDIKALLRWRVFIYWTFGLGVFDAL
 VFFFYAYFIFENTTVTINGQMFNWTFTLVFTVMVLTVTLKALDTHYWTWINHFVIWGSLLFYIAFSL
 LWGGVIWPFVSYQRMYYVVISMLSSGPAWLGIIILLVTVGLLPDVLKVKVLCRQLWPTATERTQARNKCLSV
 EQPTVFMLSQTASSLSF

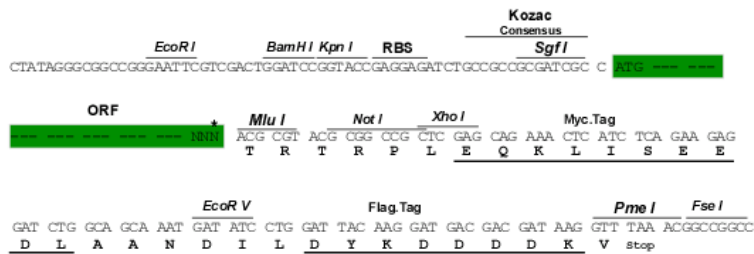
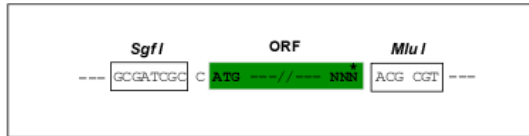
TRTRPLEQKLI SEEDLAANDILDYKDDDDKV

Restriction Sites:

Sgfl-MluI

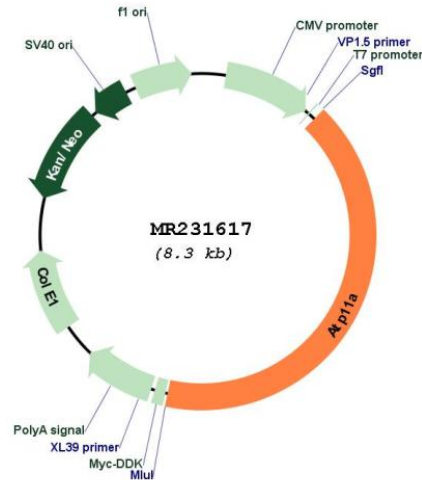
Cloning Scheme:

Cloning sites used for ORF Shuttling:



* The last codon before the Stop codon of the ORF

Plasmid Map:



ACCN: NM_001293668

ORF Size: 3411 bp

OTI Disclaimer: The molecular sequence of this clone aligns with the gene accession number as a point of reference only. However, individual transcript sequences of the same gene can differ through naturally occurring variations (e.g. polymorphisms), each with its own valid existence. This clone is substantially in agreement with the reference, but a complete review of all prevailing variants is recommended prior to use. [More info](#)

OTI Annotation: This clone was engineered to express the complete ORF with an expression tag. Expression varies depending on the nature of the gene.

Components: The ORF clone is ion-exchange column purified and shipped in a 2D barcoded Matrix tube containing 10ug of transfection-ready, dried plasmid DNA (reconstitute with 100 ul of water).

Reconstitution Method:

1. Centrifuge at 5,000xg for 5min.
2. Carefully open the tube and add 100ul of sterile water to dissolve the DNA.
3. Close the tube and incubate for 10 minutes at room temperature.
4. Briefly vortex the tube and then do a quick spin (less than 5000xg) to concentrate the liquid at the bottom.
5. Store the suspended plasmid at -20°C. The DNA is stable for at least one year from date of shipping when stored at -20°C.

RefSeq: [NM_001293668.1](#), [NP_001280597.1](#)

RefSeq Size: 7528 bp

RefSeq ORF: 3414 bp

Locus ID: 50770

Cytogenetics: 8 A1.1

MW: 130.5 kDa

Gene Summary:

Catalytic component of a P4-ATPase flippase complex which catalyzes the hydrolysis of ATP coupled to the transport of aminophospholipids from the outer to the inner leaflet of various membranes and ensures the maintenance of asymmetric distribution of phospholipids. Phospholipid translocation seems also to be implicated in vesicle formation and in uptake of lipid signaling molecules (By similarity).[UniProtKB/Swiss-Prot Function]