

Product datasheet for MR231612

Nckap1 (NM_001290745) Mouse Tagged ORF Clone

Product data:

Product Type:	Expression Plasmids
Product Name:	Nckap1 (NM_001290745) Mouse Tagged ORF Clone
Tag:	Myc-DDK
Symbol:	Nckap1
Synonyms:	C79304; H19; Hem-2; Hem2; mh19; mKIAA0587; Nap1; p125Nap1
Vector:	pCMV6-Entry (PS100001)
E. coli Selection:	Kanamycin (25 ug/mL)
Cell Selection:	Neomycin
ORF Nucleotide Sequence:	>MR231612 representing NM_001290745 Red=Cloning site Blue=ORF Green=Tags(s)

TTTTGTAATACGACTCACTATAGGGCGCCGGAATTCGTCGACTGGATCCGGTACCGAGGAGATCTGCC
GCC**CGGATCGCC**

ATGTGCGCCTCCGTGCTGCAGCCCAGTCAGCAGAAGCTGGCGGAGAAGCTCACCATCTCAACGACCGGG
GCGTCGGCATGCTCACGCGCCTCTACAACATCAAGAAGCAAGGACAAGTTTGAAGGCATGTGGCGACCC
CAAGGCTAAACCCTCCTACCTTATTGACAAAACTGGAATCTGCTGTGAAATTCATAGTCAGAAAAATTT
CCTGCTGTAGAAACGCGCAACAACAATCAACAGCTGGCACAGCTACAGAAAGAAAAATCAGAGATTCTGA
AAAATCTGGCGTTGTATTACTTTACATTTGTAGATGTTATGGAATTTAAGGACCATGTCTGTGACTTGCT
GAATACTATTGACGTTTGCCAAGTCTTCTTTGATATTACTGTGAACCTTGATTTAACAAGAAGTACTTTA
GACTTGACTGTAACCTATAACAATTAATGATACTGCTGTCCCGATTGAAGAACGGAAGGCAATCATTG
GACTATACAATTATGCACATGAAATGACCCATGGAGCAAGTGACCGAGAATATCCACGCCTTGGTCAGAT
GATTGTGGACTATGAAAACCTTTAAAAAAGATGATGGAAGAATTTGTACCCATAGCAAGTCTCTTTCA
GATGCGCTAATTTCTCTCAGATGGTGTATCCTAGACGGAACCTTTCAGCAGACCAGTGGAGGAATGCC
AGTTGCTGAGTCTCATCAGTGCACCCAGCACAATGCTTAATCCTGCGCAGTCGGACACTATGCCTTGTA
ATATCTCTCCTTGGATGCAATGGAGAAATGGATCATCTTTGGCTTTATTCTGTGCCATGGGATGCTAAAT
ACGGAGGCTACCGCACTGAACCTTTGGAAGCTAGCTCTTCAGAGTAGCTCTTGCCTCTCTCTCTTCGGG
ATGAAGTTTTCCACATTCACAAAGCTGCAGAAGACTTATTTGTAACATTCGGGGCTACAATAAAGCTAT
TAACGACATAAGAGAATGCAAGGAGGCGCTGTATCCACGCGGCTCAATGCACAGAGAAAGACGCAAG
TTTTTACGGTCTGCACTAAAAGAAGTGGCCACTGTCTCTGACCAGCCTGGCCTGCTTGGTCCCAAGG
CACTTTTTGTTTTCATGGCGTTATCTTTGCCCGTATGAAATATCTGGCTGCTCCGTCACGCGGACAA
CATGCCAAAGAAGAGTGCAGATGACTTTATAGATAAGCACATTGCTGAGCTAATATTTTACATGGAAGAG
CTTAGAGCACATGTCAGGAAGTATGGCCTGTCATGCAGAGGACTACGTGCAATACCTCTCTGGCTTTG
ATGCTGTTGTCCTCAATGAACCTGTGCAGAACCTGTCTGTTGCCCTGAGGATGAATCGATCATCATGTC
CTCTTTGTGAACACCATGACCTCCCTAAGTGTGAAGCAAGTTGAAGATGGAGAAGTGTGTTGATTTGAGA
GGGATGAGATTAGATTGGTTTAGGTTACAGGCGTACACTAGCGTCTCAAAGCTTCACTTAGCCTTGCGAG



[View online »](#)

ATCACAGAGAACTTGAAAGATGATGAACACAATCATATTCCATACAAAATGGTAGATTCTTGTTGA
 AATGTTGGTGGAAACATCCGATCTCTCCATATTTTGTAAAAACAGCCGTGCTTTTGTGAGAAGATGTTTCAG
 CAGTGTGGAGCTGCCCTCTCAGTCAAGATACTCCATTGCCTTTCTCTGCTCTGCACTCACTTCATGA
 GCTGCACACATGAACTGTGTCTGAAAGAGCGCCATCATATAGGAGATCGTAGCCTTTCCCTGTGCAATAT
 GTTCTGGATGAGATGGCCAAACAAGCTCGAAATCTCATCACCAGATTTTGCACAGAACAGTGTACTCTT
 AGTGACCAGTATTGCCGAAGCATTGTGCCAAAACCATCAGTCAAGCAGTGAATAAGAATCAAAAAAAC
 AGACGGGCAAGAAAAGGGGAACTGAAAGGGGAAAAACCGGGTGTGGAGAGCATGAGGAAAAACAGGCTGGT
 AGTGACCAACCTTGATAAGTTGCACACTGCACTTTCGGAGTTATGCTTCTCCATAAAATTATGTTCCAAAC
 ATGGCGGTGTGGGAGCACACCTTACGCGGAGGGAGTATTGACTTCTCATCTGAAATCCGGTTACTA
 AATCAATTGTTGGAATGACTATGTATAATCAAGCTACACAGGAAATGCAAAGCCATCAGAGCTTCTAAC
 AAGCGTAAAGAGCATATAGTGTACTCCAGTCCATAGAGAACTATGTGCAGATTGATATCACCAGAGTA
 TTTAATAATGCTTTCTCAGCAAACACAACACTTAGACAGCCATGGAGAACCAACCATCACGAGTCTGT
 ATACAACTGGTACTTGGAACTTTATTAAGACAAGTCAGCAATGGCCATATAGCTATTTTCTGCAAT
 GAAAGCATTGTGAAATTTACCCACAGAAAATGAATTAACATTCAATGCAGAGGAATATTCTGATATATCA
 GAAATGAGATCATTATCAGAGCTCTAGGCCCATATGGGATGAAGTTCTGAGTGAAGCCCTTATGTGGC
 ACATTTTCATCACAAAGTAGCTGAACTTAAGAAACTTGTGGTGGAGAATGTTGATGTTCTAACACAAATGAG
 GACCAGCTTGTGCAAACAGACCAGATGGCTGCACTCTTAAAAAGATTATCATCTGTTGACAGTGTCTTG
 AAAAGGATGACGATAATTGGTGTATTTATCTTCCGGTTCATTGGCACAAGAAGCATTGAGAGATGTC
 TGTCCTACCACATTCCTTCTCGTGAGCTCCATTGAAGATTTCAAGGATCACATTCCTCGGAAACTGA
 TATGAAGTTCGAATGAATGTGTATGAGCTGCTCGGCTGTGGGTACCATGTGAGATTGATCTGCTGCC
 TTAGTCGAGCTCTTCTCACAAAAATCAGAGAACATAGTCCAGAGGAAGAATACAAGATCGCTTGTC
 TCCTGATGGTCTTGTAGCAGTTTCTTGCCTACACTGGCCAGCAATGTAATGTCAAGTACAGCCCTGC
 AATAGAAGGACTGCAACAATATACATTTGTTGAAAGCCATCAACCAGATTGCTGCAGCTTGTGTTT
 ACAATTCACAAAGGAAGTATTGAAGACCGACTTAAGGAATTCCTGGCGCTGCATCATCCAGTCTACTGA
 AAATTGGCCAAGAGACAGATAAACTACAACAAGAAATAGAGAATCTGTTTATTGCTACTGGATATGAT
 TGTACAAGAATCACCATTCTGACAATGGATCTTGGAACTTGTGTTTCTTATGTGTTGCTGAGAAAT
 GCATACCATGCTGTCTACAAACAAAGTGTACATCTTCTGCA

ACGCGTACGCGGCCGCTCGAGCAGAAACTCATCTCAGAAGAGGATCTGGCAGCAAATGATATCCTGGATT
 ACAAGGATGACGACGATAAGGTTTAA

Protein Sequence:

>MR231612 representing NM_001290745
 Red=Cloning site Green=Tags(s)

MSRSVLQPSQQLAEKLTILNDRGVGMLTRL YNIIKKQQVWVWACGDPKAKPSYLDKNLESVAVKFIVRKF
 PAVETRNQQQLAQLQKEKSEILKNLALYYFTFVDVMEFKDHVCDLLNTIDVCQVFDITVNFDTKNYL
 DLTVTYTTLMILLSRIEERKAIIGLYNYAHMTHGASDREYPRGQIMIDYENPLKMMEEFVPHSKSLS
 DALISLQMVYPRRLSADQWRNAQLLSLISAPSTMLNPAQSDTMPCEYLSLDAKMEKWIIFGFILCHGMLN
 TEATALNLWKLALQSSSLSLFRDEVFHIHKAEDL FVNIRGYNKRINDIRECKEAAVSHAGSMHRERRK
 FLRSALKELATVLSQPGLLGPALFVFMALSFARDEIIWLLRHADNMPKKSADDFIDKHIAELIFYMEE
 LRAHVRKYGPMQRYVYQVLSGFDVAVVNLVQNLVQNLVQNLVQNLVQNLVQNLVQNLVQNLVQNLVQNLV
 GMRLDWFRQLAYTSVSKASLSLADHRELKMMNTIIFHTKMVDSLVEMLVETSLSLFCFYSRAFEKMFQ
 QCLELPSQRSYIAFPLLCTHFMSCTHELCPNERHIGDRSLVQNLVQNLVQNLVQNLVQNLVQNLVQNLVQNLV
 SDQLLPKHCAKTISQAVNKKSKKQTGGKGEPEREKPGVESMRKRLVVVNLVDKLTALSELFCFSINYVVPN
 MAVWEHTFVTPREYLTSHLEIRFTKSI VGMTMYNQATQEIAKPSSELLTSVRAYMTVLQSIENYVQIDITRV
 FNNVLLQQTQHLDSHGEPITISLYTNWYLETLLRQVSNHIAIFPAMKAFVNLPTENELTFNAEEYSDIS
 EMRSLSELLGPYGMKFLSESLMWHISSQVAELKKLVLVENVVDLTMQRTSFDKPDQMAALFKRLSSVDSVL
 KRMTIIGVILSFRSLAQEALRDVLSYHIPFLVSSIEDFKDHIPRETDKVMAMNVYELSSAAGLPCEIDPA
 LVVALSSQKSENI SPEEYKIAELLVMFVAVSLPTLASNVMSQYSPAIEGHCNIIHCLAKAINQIAAALF
 TIIHKSIEDRLKEFLALASSLLKIQETDKTTTTNRRESVYLLLDIMIVQESPFLTMDLLESCFPYVLLRN
 AYHAVYKQSVTSSA

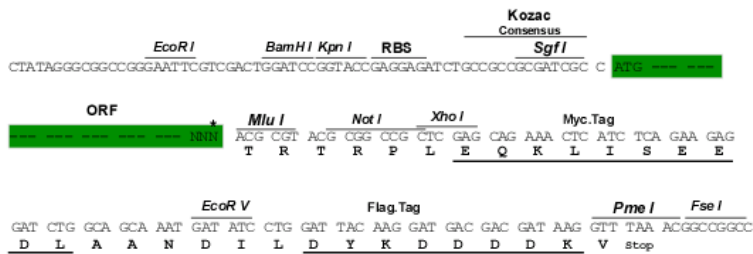
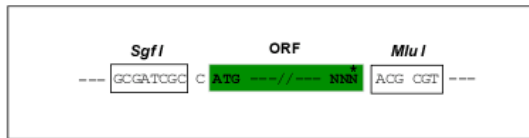
TRTRPLEQKLI SEEDLAANDILDYKDDDDKV

Restriction Sites:

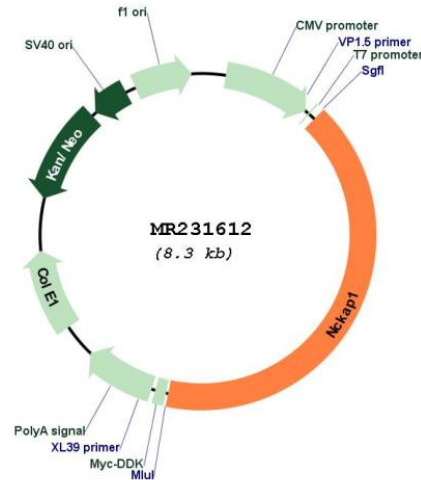
SgfI-MluI

Cloning Scheme:

Cloning sites used for ORF Shutting:



* The last codon before the Stop codon of the ORF

Plasmid Map:


ACCN: NM_001290745

ORF Size: 3402 bp

OTI Disclaimer: The molecular sequence of this clone aligns with the gene accession number as a point of reference only. However, individual transcript sequences of the same gene can differ through naturally occurring variations (e.g. polymorphisms), each with its own valid existence. This clone is substantially in agreement with the reference, but a complete review of all prevailing variants is recommended prior to use. [More info](#)

OTI Annotation: This clone was engineered to express the complete ORF with an expression tag. Expression varies depending on the nature of the gene.

Components: The ORF clone is ion-exchange column purified and shipped in a 2D barcoded Matrix tube containing 10ug of transfection-ready, dried plasmid DNA (reconstitute with 100 ul of water).

Reconstitution Method:

1. Centrifuge at 5,000xg for 5min.
2. Carefully open the tube and add 100ul of sterile water to dissolve the DNA.
3. Close the tube and incubate for 10 minutes at room temperature.
4. Briefly vortex the tube and then do a quick spin (less than 5000xg) to concentrate the liquid at the bottom.
5. Store the suspended plasmid at -20°C. The DNA is stable for at least one year from date of shipping when stored at -20°C.

RefSeq: [NM_001290745.1](#), [NP_001277674.1](#)

RefSeq Size: 4421 bp

RefSeq ORF: 3405 bp

Locus ID: 50884

Cytogenetics: 2 48.21 cM

MW: 130 kDa

Gene Summary:

Part of the WAVE complex that regulates lamellipodia formation. The WAVE complex regulates actin filament reorganization via its interaction with the Arp2/3 complex. Actin remodeling activity is regulated by RAC1. As component of the WAVE1 complex, required for BDNF-NTRK2 endocytic trafficking and signaling from early endosomes (PubMed:27605705). [UniProtKB/Swiss-Prot Function]