

Product datasheet for MR231606

Hps5 (NM_001005248) Mouse Tagged ORF Clone

Product data:

Product Type:	Expression Plasmids
Product Name:	Hps5 (NM_001005248) Mouse Tagged ORF Clone
Tag:	Myc-DDK
Symbol:	Hps5
Synonyms:	Al646796; AL022647; C85120; haze; hz; maroon; mr; ru-2; ru2
Mammalian Cell Selection:	Neomycin
Vector:	pCMV6-Entry (PS100001)
E. coli Selection:	Kanamycin (25 ug/mL)
ORF Nucleotide Sequence:	>MR231606 representing NM_001005248 Red=Cloning site Blue=ORF Green=Tags(s)

TTTTGTAATACGACTCACTATAGGGCGGCCGGAATTCGTCGACTGGATCCGGTACCGAGGAGATCTGCC
GCC**CGATCGCC**

ATGACTTTTGTGCCAGTGATACCAGAAGCCTACAGCCATGTTCTTGCAGAGTTTGAGTCCTTGGATCCGT
TACTCACAGCCCTGAGGCTGGACTCCAGTCGTCTGAGGTGTACCAGCATAGCTGTGTCTCGGAAATGGTT
GGCGTTAGGCAGCACAGGAGGAGGACTCAATCTCATTAGAAAGATGGCTGGAAGCAAAGGCTGTTTCTC
TCTCACCGGGAAGGGCAATCTCTCAGATTGCCTGCTGCTCATGATGATGATTATGTTGCTGTAGCTA
CCAGTCAAGGTCTTGTAGTTGTTTGGGAATTAATCAAGAGCGTCTGGGAAGCCAGAACGAATTCATGT
GTCCTCAGAACACAAAGGCCGAAAAGTTACTGCCCTCTGTTGGGACACGGCTGTTCTGAGAGTCTTTGTC
GGTGACCATGTGGCAAAGTATCTGCCATCAAACACTTTGAAAACAAGCAAAGCAGCTGCTGCCCT
TTGTGATGTTTCTGTGCAGACAGTACTAACAGTGGACTCGTGTGTCTGTCAGTTGGATTACTTGGATGG
AAGATTACTTGTGTCTTCACTGACTCGATCCTTCTTGTGTGACACCGAGAGGGAAAAGTTTTGGAAAATC
GGAAATAAGGAAAGACATGGAGAATATGGGGCTTGTCTTCCCCGGGCGGTGTGCTGGGGGCCAGCAGC
CTGTGATCTACTGCGCCCGCCAGGCTCCCGGATGTGGGAAGTGAACCTTTCAGCGGGAAGTGTCTCAGTAC
ACACCAGTTCAAGAAGCTCCTGTCAATGCCACCCTCCCTGTGATCACTGCAAGATCAGAGCCTCAGTAT
GATCACACAGTTGGATCCTCCAGTCTTTGGCATTCCCCAAACTTTGCATCTTAGTGAACACTGTGTGC
TGACTTGGACAGAAAAGGAATTTATATTTTCATTCTCAGAATGTTCAAGTCTTCTTTGGAGTGAAGT
CAAGGATATTCAGGATGTAGCTGTCTACAAGAATGAATTGTTCTGTTTACACTTTAATGAAAAATCTCA
CATCTTTCCCTGTTGTCTGTGGAGCGCTGTGTAGAACGCCTGTTAAGGAGAGGCCGTGGGACCTGGCTG
CTCGCACATGCTGTCTTCCAAAATTCTATTATTACCAGCAGAGCAAGAAAAACATTGACTGCAGATAA
GTTGGAGCATTTGAAGTCTCAGCTGGACCTTACAGCCTGCAGTGAACATAATTTCTCAGCTGGACGACTTG
ATCTTAAGGTTTCAGCCTTTGGAGTCGGCTGCAGCAGCAGAAGAAGCTCCATCTCATCGCATGAAAGTT
TTAGCATCTTGGACTCTGGTATTTATCGTATCATCAGTAGTAGAAGAGGCAGTCAGTCCGACGAAGATTC
TTGTTCCCTTACAGCCAGACCTTCTCAGAAGATGAAAGGCTTAAAGAATTTGCCTCACACCAGGAAGAG



[View online »](#)

GAGCAGCCAGAGCAGGGCTGTGGTGCCAATAGGAATGAAGAGAGTGCTTCCCACAGTCCAGTGATGTCTG
AGGTAGATAAGAGTGAAGCTTTTCTGCCCTTCAGCATTGCACTGCCATTCGTTCTCCATCTCCCCTCGT
GTCTCTTCAGGCTGTTAAAGACAGTGTTTCTAGCTTTGTGCGTAAACTACTGAGAAGATTGGCACCCCTT
CACGGAAGCCCCGAGCTGAAAGAGCCTTTTGAATCCAAGGATGCTGACCGAGCACATGAAGAGGAAGTGA
GTGCAGTACCTGCCCTCTGGAGGAGGACACTGAGGAGAAAGAAATTCATCAACCTCCTAAAGAAGACAG
GCTTCAAGAACTCACAGCAGCGACAGCAGAAGCAATGACCAAGTATTGGACCCTCTGGTCTGTTTGAG
CCCCAGGTGCTAAGAATGGTTTTACTTTGAGTGGCTTTCACAGTTAGAGAAAACATTTGCCATGAAAGACT
TCCCCGGCATTTCCAATACCAGCAGTCCAACCGTGAAATCAAACCTGGGTGCACACCTCCTCGGTGAGAC
AGAAAAGAGAGTATTAGATGAAGAGAGTGGAGAAGGAAGGGTCTCTTTAGTCACTGAAGAAGCTGGA
GGTCAGATAACCTGTGACCCTGTAAAGCAACCTCAGTGAGCCCTCGGCTGACCGTTTTCGAGTATGCTCTC
CATACGCCATCACAACAGCCTTCAGAGGGACCTGGCGGAATTGACAACGTTGTGCTTGGAACTGAATGT
GTTGACTTCAGCAATGAAAAGCGTAGGTGGGCATGTGGACCGGGCTTCACAGCAGCTCTCCAGAAATC
CTGGCTTGTGCTTCTAAAGAAGTACTTTTTTCTTCTGGACTTGAAAAGAGCAAAGGAGAGTATCAAGC
TCACTTACGACAGCCCTTGCCTTTGGGACACTTTTGTGCAAGGACTAAAAGAAATGGCAAGATCTAATCC
TGCTACACGGAGCTGGAAGAAGGAGACCTGCCACGGGGTTACAGTACTGGATGGCTCCGTCCCTTCT
GATAGTCCCTTGTGATTGCATTTGCCACCCGGTTGTATGATAGATTTGGGGAGTCAGCCCTTCGAGCTT
GCATCAAGTTTTATCCGTCCATTTGCCCTCCGACATCGCACAGCTTTGCCGTATCATCTGCTCAGTT
CTTGGCCTATCTAGACAGTCTGGTGAAGTCCAGGCCGGAAGACCAGTGGCCATCCTTCTTGAGTTCCTT
CTACAACCAGAGTCTTTAAGACTTGAATGGCTGCTTTTGGCAGTGTCCCATGATGCTCCACCAAGCACA
GTACAGTGGATGATGAAGGGCACCCAGGCCCATTCACACTTGCTTTCTTGGGGTTATAGTCAGCTGAT
GGTTTCTGGCCTGGATATCTTACCCTCTGTCTGGAGCTGGAGAGGAGGAGGGAGGCCTTCACCAACATTG
TGTATCTGAATGACATAAGCCTGATGGAAGGGGACAATGGGTGGATCCCTGAGACCTTGGAGGAATGGAA
GCTTCTCTACATCTACTACAGACCAAGAGCACAAAGGCCAGCTCCCCAGGAGTCACTAAACGGGAGCCTC
AGTGATGGCCAGCCCTATCAATGTGGAGAATGTGGCCCTCCTGTTAGCTAAGGCCATGGGCCAGATC
GGCCTGGTCACTGCTACAGGAGTGTGGTCTGGCTCTTGAGTTGTGAGAAAAGTTACCAGAACCTGTGA
TATCCTGAGGATTGCTGAGAGAAGGCAGAGAGCGCTGATACAAGGCATGCTTGAGAAGTGTGACCCTTC
CTCTGGTCGCAGCAGGCC

ACGCGTACGCGGCCGCTCGAGCAGAACTCATCTCAGAAGAGGATCTGGCAGCAAATGATATCCTGGATT
ACAAGGATGACGACGATAAGGTTTAA

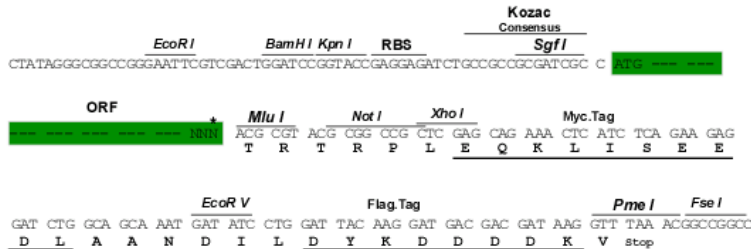
Protein Sequence: >MR231606 representing NM_001005248
 Red=Cloning site Green=Tags(s)

MTFVVPVPEAYSHVLAEFESLDPLLALRLDSSRLRCTSIIVSRKWLALGSTGGGLNLIQKDGWKQRLFL
 SHREGAISQIACCSHDDDYVAVATSQGLVVVWELNQERRGKPERIHVSSEHKGRKVTALCWDTAVLRVVFV
 GDHVGVKVAIKLNTLKQAKAAAAFVMPVQTVLTVDSCVVQLDYLDGRLLVSSLTRSFCDTEREKFWKI
 GNKERHGEYGACFFPGRACAGGQQPVIYCARPGSRMWEVNFEDGEVLSTHQFKLLSMPPLPVITARSEPQY
 DHTVGSSQSLAFPKLLHLSEHCVLTWTEKGIYIFIPQNVQVLLWSEVKDIQDVAVYKNELFCLHFNKIS
 HLLSLSVERCVERLLRRGLWDLAARTCCLFQNSIITSRARKTLTADKLEHLKSQLDLTACSELISQLDDL
 ILRFEPLSACSSRRSSISSHESFILDSGIYRIISSRRGSQSDSDCSLHSQTFSEDERLKEFASHQEE
 EQPEQCGGANRNEESASHSPVMSEVDKSEAFLPFSIALPFRSPSPLVSLQAVKDSVSSFRKTEKIGTL
 HGSPCLKPFESKDADRAHEEVSAVTCLPEEDTEEKEIHQPPKEDRLQELTAATAEAMTKLLDPLVLF
 PKVLRMVLLEWLSQLKTFAMKDFPGISNTSSPTVKSNLGAHLLGETEKRVLDEESGEGRRVSLVTEEAG
 GQITCDPVSNLSEPSADRFVCSPIYAITNSLQRDLAELTTLCELENLVTSAMESVGGHVDRAQQLSPEI
 LACRFLKKYFFLLDLKRAKESIKLTYDPCVWDTFVEGLKEMARSNPAYTELEEGDLPTGLQLLDGSVPS
 DSPLLIAFATRLYDRFGESALRACIKFYPSISPSDIAQLCRHHPAQFLAYLDSLKSRPDEQWPSFLEFL
 LQPESLRLEWLLAVSHDAPPSTSTVDDEGHPRPHSHLLSWGYSQILILLIKLPADFTTKEKMTDICRSY
 GFWPGYLTLCELEERRREAFNIVYLNDISLMEGDNGWIPETLEEKLLHLLQTKSTRPAPQESLNGSL
 SDGPAPINVENVALLLAKAMGPDRAWSLQECGLALELSEKFTRTCDILRIAERRQRALIQGMLEKCDRF
 LWSQQA

TRTRPLEQKLISEEDLAANDILDYKDDDDKV

Restriction Sites: SgfI-MluI
 Cloning Scheme:

Cloning sites used for ORF Shuttling:



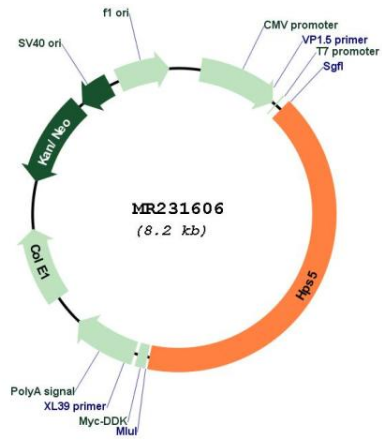
* The last codon before the Stop codon of the ORF

ACCN: NM_001005248

ORF Size: 3378 bp

OTI Disclaimer:	The molecular sequence of this clone aligns with the gene accession number as a point of reference only. However, individual transcript sequences of the same gene can differ through naturally occurring variations (e.g. polymorphisms), each with its own valid existence. This clone is substantially in agreement with the reference, but a complete review of all prevailing variants is recommended prior to use. More info
OTI Annotation:	This clone was engineered to express the complete ORF with an expression tag. Expression varies depending on the nature of the gene.
Components:	The ORF clone is ion-exchange column purified and shipped in a 2D barcoded Matrix tube containing 10ug of transfection-ready, dried plasmid DNA (reconstitute with 100 ul of water).
Reconstitution Method:	<ol style="list-style-type: none"> 1. Centrifuge at 5,000xg for 5min. 2. Carefully open the tube and add 100ul of sterile water to dissolve the DNA. 3. Close the tube and incubate for 10 minutes at room temperature. 4. Briefly vortex the tube and then do a quick spin (less than 5000xg) to concentrate the liquid at the bottom. 5. Store the suspended plasmid at -20°C. The DNA is stable for at least one year from date of shipping when stored at -20°C.
RefSeq:	NM_001005248.2 , NP_001005248.2
RefSeq Size:	4804 bp
RefSeq ORF:	3381 bp
Locus ID:	246694
UniProt ID:	P59438
Cytogenetics:	7 30.56 cM
MW:	126.3 kDa
Gene Summary:	May regulate the synthesis and function of lysosomes and of highly specialized organelles, such as melanosomes and platelet dense granules. Regulates intracellular vesicular trafficking in fibroblasts. May be involved in the regulation of general functions of integrins. [UniProtKB/Swiss-Prot Function]

Product images:



Circular map for MR231606