

## Product datasheet for MR231599

### Agbl1 (NM\_001199224) Mouse Tagged ORF Clone

#### Product data:

Product Type:	Expression Plasmids
Product Name:	Agbl1 (NM_001199224) Mouse Tagged ORF Clone
Tag:	Myc-DDK
Symbol:	Agbl1
Synonyms:	Ccp4; D430020F16; EG244071; Nna1-l1
Vector:	pCMV6-Entry (PS100001)
E. coli Selection:	Kanamycin (25 ug/mL)
Cell Selection:	Neomycin
ORF Nucleotide Sequence:	>MR231599 representing NM_001199224 Red=Cloning site Blue=ORF Green=Tags(s)

TTTTGTAATACGACTCACTATAGGGCGCCGGAATTCGTCGACTGGATCCGGTACCGAGGAGATCTGCC  
GCC**CGATCGCC**

ATGGCTGAACAAGAAGGCAGTGGCCTGCAGATGCTGCTGCACACGCTCCAGAACTCCTCTGATAAAGCAT  
CCACCTGTCCATCCTCCAAGTCTCGGCGATCTGCTTTCTGTTGGCACAGACCGGAGGATTTATTATAT  
GATCAGCAAAGGTGGCAGCGAGGCCCTTCTGCAGACTCTGGTGGACACAGCAAGGTCATCTTCTCCTGAC  
TGGGACATCCTCCTGCCTCTCTTCAGGCTGCTGGCTAAAGTTGGCTAAGAGATAAGAAGTTGGACAGA  
AGGCACAGAAATTAGAAGCGCTTGATGTGACCTTGATTTGGCCAGGAAAAACCTGTCTCACAGCCAGAA  
CCTCCTGCACTGTCTCTGGGTATTGCGTGTGTTTGCCTCCAGTGTAAACCAGGGAGCCATGCTGGGAATT  
AATGGAGCGATGGAAGTCTCTCAAGTCTTTCTCCTTACACCCGAAAGCACACCCGGACAATCAGGG  
CAGCCACTGAAGTTTGGCAGCATTGCTGAAATCCAAGTCTAACTGCCGAGGGCAGTGAATAGAGGCTA  
TGTCACACAGCTTGCTCAGGCTGCATCAGGACTGGCACAGCCGATGTGACCAATACCTATGTGACGATC  
CGCCATGGGCTTCTGCTGCCTCAGGCACATTGTCGCCCTCCGCTCTGGCAGGGAGGCCCTCTTGGCAG  
CCCAAGGCATGGAGACTCTTTCAGCATTGCACAGACCTGCCTGGAGAACAAGAACATGGAACCTTGATGAT  
CTCTGCTGTGATCCAGATCCTCAGACAGTGTACCCTGCCAGTCCGCTTCCCCTGGTACAGCCAGCAGT  
GCCTATACCTTCCAGCCCTGGGAGCACCAGCTCAGAGCTCCCACTCAATCTGACTGAAGAAGATTTTG  
ACGATGATGGTGTGAAGAGATGGACAAAGACTCAGATGTGGAGGCTGTGAAAGAAGATGATGACTTGGAA  
AACTGATCTGAGCAAACCTAGTTCTAAGCCTGGTCTTGACCTCCCTGAGGAGGAACCTGCACAGTATGAT  
GCAATGTGTCCTGAGCTGTCTGTAGCTTTGAGGAACTGGAACCCAAATGTGGAGATGATTTGAACAACA  
AAGACACTCTGCATGCCAATCACCACCACATCCAAGTGTGCTTCTCAGGCAACACTGTTTTAACCG  
GGAGCACAGCTCCTGGAGACAAGAAAGAGAAGACACAGTCCACTCGTCCATTCTGCATGTTGAGACA  
GGGAAGTCCGGTGTACCGTCATCCTCAAACAAGATCTGCAACAATGTGAATCAAAGCCTACAACAAA  
ATGGTTTGGAGATCGATTCTTCTGGACATGATACCTCTGACATTAGGCTCCCTTGAACAGGCTGCTTG  
GGACATGGAAGCAATTTCTGTCCAAGGATAACTGCTTCAATTTCCAATTCTACCAAGCCAGAAGAAAGC  
ATCGGAGCAGCAGAGAACTTCTGCACACACATGCCAAGCACATACCTTTCCAGATCCTCATCTTTATA



[View online »](#)

TAGCCAATGCTATGAGAACAAGATCTGCTGTGGGATCAAGACAATGGCATTTCCTGATCTCTGGGGCCA  
 CTGTCCACCTCCCCTGCTCAACCCATGCTGGATCGCAAAGTGGGAGTACAGAGGATCAAGATACTTGAG  
 GATATCCGGAGGCTCCTCCATCCAAGTATGTTATAAACAAGTTGTCTTCAGTTTAGACGAGCCAGGC  
 CTTTGCAAGGCAGCATTTCGAATGCTTAATGTTCCACTCCAAGTTTGAATCAGGAAATCCTCGTAAAGC  
 CATCCAAGTGCCTGAGTTTGAGTATGACTTGTGGTCAATGCCGACGTGAATAGCTCCAGCACCAGCAG  
 TGGTTCTACTCAAGGTGAGCGGCATGAGGGCCGCTGCCCTTACTACTCAACATCATCAATTTGAGA  
 AACCCAACAGCCAGTTCAACTATGGGATGCAGCAACCCCTGATTTCTGTGAAAGAGGCTTCTTTGGTGC  
 ACCTGCCTGGATACGGACAGGCTCTGACATTTGTTACTACAAAAATCACTACCGTCAGAATGCAGCTACC  
 ATGGATGGAGCATTGGGGAAGCGCTACTACACCCTTACCTTTGCTGTACCTTCCCTCATAATGAGGATG  
 CCTGCTATCTGGCCTACTACTATCCCTACACATATTCCACCCTCATGACTCATCTTGAAATCTGGAAAAG  
 AAGCATCGACCACAGGAAATCTACTTCCGACATGATGTTCTCTGCCAACGTTGGGAGGGAATCCATGT  
 CCGCTGGTGACAATCACTGCCTTCTGAACTAACAGCACCGAGCATCTGGAGCAGTCCGCTGTCGTC  
 CATATCAGGTGATCAGACCCGAGTTCACCCAGGAGAGCAATGCCAGCTGGGTGATGAAGGGAACCTT  
 GGAGTTCTAGTCAGCAGTGACCCCGTGGCAAAGCTCCTGAGGGAAAACCTCGTGTCAAGATCATCCCT  
 ATGCTCAACCCAGATGGTGTCAATGGCAATCACAGATGCTCACTGAGAGGCGAGGATCTCAACAGAC  
 AGTGGCTCTCTCCCAAGCTCATCTCCAACCAACCATCTACCATGCTAAAGGTCTCTCCATTACCTAAG  
 CAGTACTGGCCGGGACCTGTGGTCTTCTGTGATTTCCATGGTCACTCCCAAAAGAGAATGATTCCTT  
 TATGGTTGCAGCATGAAAGAACTTTGTGGCAAGCAGGCTGACTGTGGGTGAATCTGCCCTCTTGAGG  
 ATGTCAGCTACAGGACACTTCAAAAAATCTGGACAAGCTAGCACCAGCATTCCCATGAACAGCTGCAG  
 CTTTCTGGTTGAAAAATCAGGAGCTTCCACTGCCCGAGTGGTGGTGTGGAGAGAGATGGGGGTTCCAGA  
 AGCTATACCATGGAGAGCAGCTACTGTGGCTGCAACCAGGGCCCTATCAGGGTCTACAGTTTGGTACTG  
 GAGAACTAGAAGAAATGGGAGCCATGACTGCTTGGGACTGCTCATCTTGAACACTCAAATCTGTAACCTG  
 TAGCCATAAGCTTTGGCTCGAGCTTCACTCTGCTGAACGCGGATGTTCTGGAACACTCACTCCAGCGG  
 TGCAATAGCAGCAGCAGCAACAGCAGCAACAGAACTCTGAGGTAGATGATGAGCCATATTGCATGGAGG  
 AGATTGACTACAGTGTGACAGCAGCTCAGACGAGAACAAGAACTTCACTGAACTGGACCGCAGATCCA  
 GGAGTGTGCCTTGAACAAGGATGAAGAAGAAGAAAAAGAGGAAGGAACAGGATGGAGAAGAAGATCT  
 GTCACC

ACGCGTACGCGGCCGCTCGAGCAGAACTCATCTCAGAAGAGGATCTGGCAGCAATGATATCCTGGATT  
 ACAAGGATGACGACGATAAGGTTTAA

**Protein Sequence:**

>MR231599 representing NM\_001199224  
 Red=Cloning site Green=Tags(s)

MAEQEGSGLQMLLHTLQNSSDKASTLSILQVLGDLLSVGTDRIIYMIKGGSEALLQTLVDTARSSSPD  
 WDILLPLFRLLAKVGLRDKKFGQKALELEALDVTLLARKNLSHSQNLHCLWVLRVFASSVTTGAMLGI  
 NGAMELLFKVLSFYTRKHTRTIRAATEVLAALLKSKSNCRRAVNRGYVNSLLRLHQDWHSRDVTNTYVVI  
 RHGLLLCLRHIVALRSGREAFLLAQGMETLFSIAQTCLNKNMELVISAVIQILRQCYPASRLPLVTASS  
 AYTFPAPGSTSSELPLNLTEEDFDDGDEMDKSDVEAVKEDDDLETDLSKLSKPGDLPEEELAQYD  
 AMPELSCSFEELPKCGDDLNNKDTLHANHHIIPSVASLRQHCFNREHSSWRQEREDTVHSSILHMVKT  
 GKSGVPSSSKQRSATNVNQLQNGLEIDSSGHDTSDIQAPLEQAAWDMEAISCPRITASFPNSTKPEES  
 IGAAEKLLHTHAKHIPFHDPHLYIANAMRTRSAVGFKTMAFPDLWGHCPPAAQPMLEDRKLVQRIKILE  
 DIRRLHPSDVINKVVFSLDEPRPLQGSISNCLMFHSEFESGNLRKAIQVREFEYDILLVNADVNSHQHQ  
 WFYFKVSGMRAAVPYHFNIINCEKPNQFNQGMQPTLYSVKEALLGRPAWIRTGSDICYKKNHYRQNAAT  
 MDGALGKRYTTLFAVTFPHNEDACYLAYHYPTYSTLMTHLEILERSIDHREIYFRHDVLCQTLGGNPC  
 PLVITITAFPEESNSTEHLQFRCRPYQVITARVHPGESNASWVMKGTLEFLVSSDPVAKLLRENFVKIIP  
 MLNPDGVINGNHRCSLRGEDLNRQWLSQAHLQPTIYHAKGLLHYLSSTGRGPVVFCDFHGHSQKKNVFL  
 YGCSMKETLWQAGCTVGESALLEDVSYRTLPKILDKLAFAFTMNSCSFLVEKSRSTARVVVWREMVS  
 SYTMESYCGCNQGPYQGLQFGTGELEEMGMYCLGLLILELKSVCNCSHKLRLARASSLLNADVLEHYLQR  
 CSSSSNSNRTSEVDDEPYCMEEIDYSADSSDAEQNFTELDRIQEALNKDEEEEEKEEGTWRRRS  
 VT

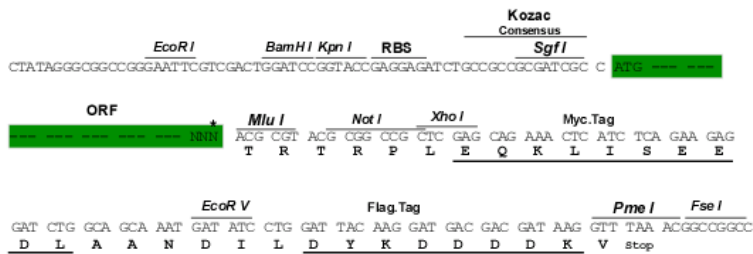
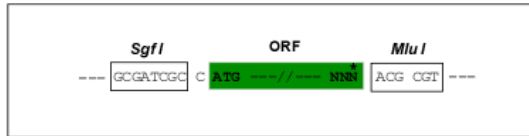
TRTRPLEQKLISEEDLAANDILDYKDDDDKV

Restriction Sites:

SgfI-MluI

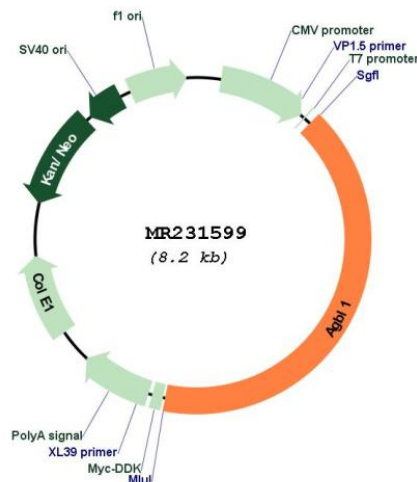
Cloning Scheme:

Cloning sites used for ORF Shutting:



\* The last codon before the Stop codon of the ORF

## Plasmid Map:



ACCN: NM\_001199224

ORF Size: 3366 bp

OTI Disclaimer: The molecular sequence of this clone aligns with the gene accession number as a point of reference only. However, individual transcript sequences of the same gene can differ through naturally occurring variations (e.g. polymorphisms), each with its own valid existence. This clone is substantially in agreement with the reference, but a complete review of all prevailing variants is recommended prior to use. [More info](#)

OTI Annotation: This clone was engineered to express the complete ORF with an expression tag. Expression varies depending on the nature of the gene.

Components: The ORF clone is ion-exchange column purified and shipped in a 2D barcoded Matrix tube containing 10ug of transfection-ready, dried plasmid DNA (reconstitute with 100 ul of water).

Reconstitution Method:

1. Centrifuge at 5,000xg for 5min.
2. Carefully open the tube and add 100ul of sterile water to dissolve the DNA.
3. Close the tube and incubate for 10 minutes at room temperature.
4. Briefly vortex the tube and then do a quick spin (less than 5000xg) to concentrate the liquid at the bottom.
5. Store the suspended plasmid at -20°C. The DNA is stable for at least one year from date of shipping when stored at -20°C.

RefSeq: [NM\\_001199224.1](#), [NP\\_001186153.1](#)

RefSeq Size: 3369 bp

RefSeq ORF: 3369 bp

Locus ID: 244071

UniProt ID: [Q09M05](#)

Cytogenetics: 7 D1

**MW:** 126.6 kDa

**Gene Summary:** Metalloprotease that mediates deglutamylation of target proteins. Catalyzes the deglutamylation of polyglutamate side chains generated by post-translational polyglutamylation in proteins such as tubulins. Also removes gene-encoded polyglutamates from the carboxy-terminus of target proteins such as MYLK. Acts as a long-chain deglutamylase and specifically shortens long polyglutamate chains, while it is not able to remove the branching point glutamate, a process catalyzed by AGBL5/CCP5.[UniProtKB/Swiss-Prot Function]