

Product datasheet for MR231598

Hdac5 (NM_001284248) Mouse Tagged ORF Clone

Product data:

Product Type:	Expression Plasmids
Product Name:	Hdac5 (NM_001284248) Mouse Tagged ORF Clone
Tag:	Myc-DDK
Symbol:	Hdac5
Synonyms:	AI426555; Hdac4; mHDA1; mKIAA0600
Vector:	pCMV6-Entry (PS100001)
E. coli Selection:	Kanamycin (25 ug/mL)
Cell Selection:	Neomycin
ORF Nucleotide Sequence:	>MR231598 representing NM_001284248 Red=Cloning site Blue=ORF Green=Tags(s)

TTTTGTAATACGACTCACTATAGGGCGGCCGGAATTCGTCGACTGGATCCGGTACCGAGGAGATCTGCC
GCCGCGATCGCC

ATGCTGCTGGTGCCCAAGGCACAGGGGCTTGTGGAGATGCTGCAGACCATCTATGAGACCGAGTCTGT
TCTCAGCAGATGGCATGTCAGGCCGGAACCATCTTGGAAATCCTGCCACGGACTCCTCTGCACAGCAT
CCCTGTGGCAGTGGAGGTGAAGCCGGTGTGCCAGGAGCCATGCCAGCTCCATGGGGGGTGGAGGTGGA
GGTAGCCCGAGCCCGTGGAGCTTCGGGGGGCTCTGGCGGGCCCATGGACCCTGCGCTACGGGAGCAGC
AACTGCAGCAGGAGCTCCTGGTCTCAAGCAGCAGCAGCAGCTCCAGAAGCAGCTCCTGTTCCGGGAGTT
CCAGAAGCAGCAGCAGCACTTGACGCGGCAGCAGCAGGTCAGCTGCAGAAGCACCTCAAGCAGCAGCAG
GAGATGCTGGCGGCTAAGAGGCAGCAGGAGCTGGAGCAGCAGCGGCAGCGGGAGCAGCAGCGGCAGGAGG
AGCTGGAGAAACAGCGGCTGGAGCAGCAGCTGCTCATCTGCGCAACAAGGAGAAGAGCAAAGAGAGTGC
CATCGCCAGCACCAGGTAAAGCTGAGGCTCCAGGAATTCCTGTTGTCCAAGTCAAAGGAGCCACGCCA
GGCGGCTCAACCATTCCCTCCCACAGCACCCCAATGCTGGGGAGCCCACCACGCTTCTTTGGACCAGA
GTTCCCTCCCCAGAGCGGCCCTCTGGGACGCCTCCCTCTACAAATTGCCTTTGCTTGGGCCCTATGA
CAGCCGTGATGACTTCCCTCCGTAACCGGCTCGGAACCAACTTAAAGTACGTTTCGAGGCTAAAA
CAGAAGGTAGCCGAGAGGAGAAGCAGTCCCTCTGCGTCGAAAGGATGGCACTGTTATTAGTACTTTTA
AGAAGAGAGCAGTTGAGATCACCGGCACGGGCTGGGGTGTGCTCCGTGTAAACAGTGCGCCCGGCTC
TGGCCCCAGCTCTCCCAACAGTCCCACAGCACCATCGCTGAGAACGGCTTACTGGCTCAGTCCCCAAC
ATCCCCACTGAGATGATCCCCAGCACCAGGCTCCCTCTGGACAGTCCCCAAACCAGTTCAGCCTCT
ATACGTCCTTCTGCCCCAATCTCCCTAGGGCTGCAGGCCACTGTCAGTGTACCAACTCGCACCT
CACCGCTCCCCAAGCTGTCAACACAGCAGGAGGCTGAGAGGCAGGCCCTTCAGTCCCTCGGCAGGGC
GGCAGACTGACCGCAAGTTCATGAGCACATCCTCCATCCCTGGCTGCCTGTTGGGAGTGGCACTGGAGG
GTGACACAAGCCCCACGGGCACGCTTCCCTGCTGCAGCACGTTTTGCTCCTGGAGCAGGCCCGGCAACA
GAGCAGCTCATAGCAGTCCGCTCCATGGGCAGTCCCCACTGGTGCAGGGTGAACGTGTGGCCACCAGC
ATGAGGACGGTGGTAAGCTCCCGAGGCACCGACTCTGAGCCGCACTAGTCTCCCGCTGCCGAGA



GTCCCCAGGCCCTGCAGCAGCTGGTCATGCAGCAGCAGCACCAGCAGTTCCTGGAGAAGCAGAAGCAGCA
 GCAGATGCAGCTGGGCAAGATCCTTACCAAACTGGGGAGCTGTCAAGGCAGCCCACCCTCACCCGGAG
 GAGACAGAAGAGGAGCTGACGGAGCAGCAGGAGGCCTTGTGGGAGAGGGGGCCCTGACCATTCCCCGGG
 AAGGCTCTACAGAAAGTGAGAGCACCCAGGAAGACCTAGAAGAGGAGGAGGAGGAGGAGGAGGAAGA
 GGAGGACTGCATTCAAGTCAAGGATGAGGATGGCGAGAGTGGTCTGTGAAGGCCCTGACTTAGAAGAG
 TCCAGTGTGGTTACAAAAAGTTGTTGCGAGATGCCAGCAGTTACAGCCCTCCAGGTGTACCAGGCAC
 CCCTCAGCTGGCCACTGTCCATCAGGCCCTGGGCCGACCCAGTCCCTCACCTGTCTGGGAG
 CATGAAGAGCCCCACAGACCAACCCACTGTGGTGAAGCAGCTTTCACCACAGGTGGTCTATGACACG
 TTCATGTGAAGCACCAGTGTATGTGCGAAACACACACGTGCACCCAGAGCAGCCGGCCGCATCCAGA
 GCATCTGGTCCCGGCTGCAGGAACTGGTCTGCTCGGCAAGTGTGAGCGGATCCGGGGTCGTAAAGCCAC
 ACTGGATGAAATCCAGACCGTGCCTCTGAGTACCACACCCTGCTCTATGGGACCAGCCCCCTTAACCGG
 CAGAAGCTGGACAGCAAGAAGCTGCTTGGCCCCATCAGCCAGAAGATGTACGCCATGCTGCCCTGTGGG
 GCATTGGGGTGGACAGTGACACGGTGTGGAATGAGATGCACTCCTCAAGTCCCGTGCATGGCAGTGGG
 CTGCTGTGGAGCTGGCCTTCAAGGTGGCTGCAGGAGAGCTCAAGAATGGATTTGCTATCATCCGGCCC
 CCAGGACACCATGCTGAGGAGTCCACAGCCATGGGATTCTGCTTCTCACTCCGTAGCCATCACAGCTA
 AACTCCTGCAGCAGAAGCTGAGCGTGGGCAAGTCTCATCGTGGACTGGGATATTCACCATGGCAACGG
 CACCCAGCAAGCATTCTACAACGATCCCTCTGTGCTCTACATCTCCCTGCATCGCTACGACAACGGGAAC
 TTCTTTCCAGGCTCTGGGGCTCCTGAAGAGGTTGGTGGAGGGCCAGGTGTGGGTACAACGTAATGTGG
 CGTGGACAGGAGGTGTGGATCCCCCAATTGGAGATGTGGAATACCTGACAGCCTTCAGGACAGTGGTGT
 GCCATTGCCAGGAGTCTCACCTGACGTGCTCCTAGTCTCCGTGGGTTTGTGCTGTGAAGGACAT
 CTGTCTCCACTGGGTGGCTATTCTGTACCGCCAGATGTTTTGGCCACTGACCAGGCAGCTCATGACAC
 TGGCTGGGGCCGGTGGTGTGGCCCTGGAGGGAGGCCATGACTTGACCGCCATCTGTGATGCCCTGGA
 GGCTGTGTCTCGGCTCTGCTCAGCGTGGAGTGCAGCCCTGGATGAAGCAGTCTGCAGCAAAAGCCC
 AGCGTCAATGCGGTTGCCACACTAGAGAAAGTCAATCGAGATCCAGAGCAAACTGGAGCTGTGTACAGA
 GTTTTGCCGCTGGTCTGGGCTGCTCGTGCAGGAGGCTCAGACAGGTGAGAAAGAGGAGGCCGAGACTGT
 GAGCGCCATGGCCCTGCTTCCGTGGGGCTGAGCAGGCCAGGCTGTTGCCACTCAAGAGCACAGCCCC
 AGG

ACGCGTACGCGGCCGCTCGAGCAGAACTCATCTCAGAAGAGGATCTGGCAGCAATGATATCCTGGATT
 ACAAGGATGACGACGATAAGGTTTAA

Protein Sequence:

>MR231598 representing NM_001284248
 Red=Cloning site Green=Tags(s)

MLLVPKAQGLVEMLQTIYETESCF SADGMSGREPSLEILPRTPLHSIPVAVEVKPVLPGAMPSSMGGGG
 GSPSPVELRGALAGPMDPALREQLLQELLVLKQQQLQKQLLFAEFQKQHDHLTRQHEVQLQKHLKQQ
 EMLAAKRQQLQEQRQREQRQEELEKQRLQQLLILRNKEKSKE SAIASTEVLRLQEFLLSKSKEPT
 GGLNHSLPQHPKCWGAHSLDQSSPPQSGPPGTPPSYKLPPLGPYDSRDDFPLRKTASEPNLKVRSRLK
 QKVAERRSPLLRRKDGTVISTFKRAVEITGTGPGVSSVCNSAPGSGPSSPNSHSTIAENGFTGSVFN
 IPTEMIPQHRALPLDSSPNQFSLYTSPLPNI SLGLQATVTVTNSHLTASPKLSTQQEAERQALQSLRQG
 GTLTGKFMSTSSIPGCLLGVALEGDTSPHGHASLLQHVLLLEQARQQSTLIAVPLHQSPLVTGERVATS
 MRTVGKLP RHRPLSRTQSSPLPQSPQALQQLVMQQHQFLEKQKQQMQLGKILTKTGELSRQPTTHPE
 ETEEELTEQQEALLGEGALTI PREGSTESESTQEDLEEEEEEEEEEEEDCIQVKDEDGESGPDGPDLEE
 SSAGYKFLFADAQQLQPLQVYQAPLSLATVPHQALGRTQSSPAAPGSMKSPTDQPTVVKHLFTTGVVYDT
 FMLKHQCMCGNTHVHPEHAGRIQSIWSRLQETGLLGK CERIRGRKATLDEIQTVHSEYHTLLYGTSP LNR
 QKLD SKLLGPI SQMYAMLPCGGIGVDSDTVWNEMHSSAVRMAVGCLVELAFKVAAGELKNGFAIIRP
 PGHHAESTAMGFCF FNSVAITAKLLQQKLSVGKVLIVDWDIHHNGTQQAFYNDPSVLYISLHRYDNGN
 FFPGSGAPEEVGGPGVGYNVNVAWTGGVDPPIGDVEYLTAFRTVVMPIAQEFSPDVVLVSAGF DAVEGH
 LSPLGGYSVTARCFGHLTRQLMTLAGGRVVLAL EGGHDLTAICDASEACVSALLSVELQPLDEAVLQKQP
 SVNAVATLEKVIIEIQSKHWSCVQRFAAGLGC SLREAQTGEKEEAETVSAMALLSVGAEQAQAVATQEHS
 P

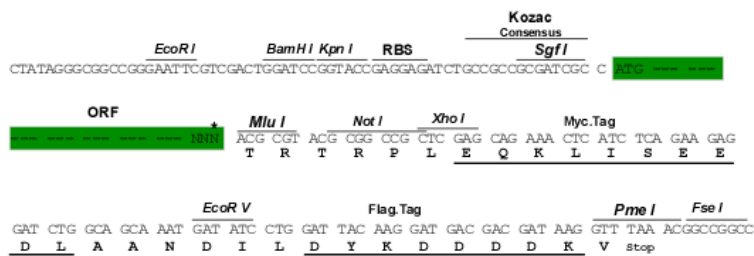
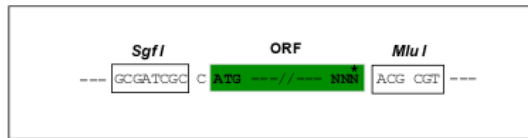
TRTRPLEQKLI SEEDLAANDILDYKDDDDKV

Restriction Sites:

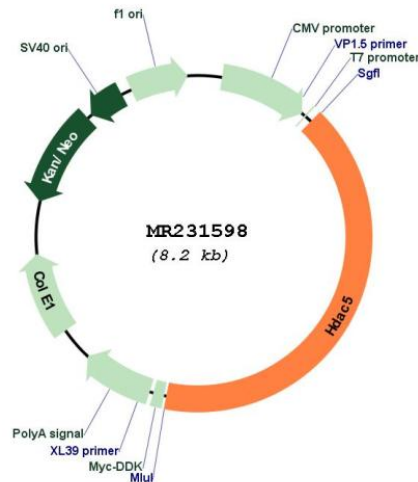
SgfI-MluI

Cloning Scheme:

Cloning sites used for ORF Shuttling:



* The last codon before the Stop codon of the ORF

Plasmid Map:


ACCN: NM_001284248

ORF Size: 3363 bp

OTI Disclaimer: The molecular sequence of this clone aligns with the gene accession number as a point of reference only. However, individual transcript sequences of the same gene can differ through naturally occurring variations (e.g. polymorphisms), each with its own valid existence. This clone is substantially in agreement with the reference, but a complete review of all prevailing variants is recommended prior to use. [More info](#)

OTI Annotation: This clone was engineered to express the complete ORF with an expression tag. Expression varies depending on the nature of the gene.

Components: The ORF clone is ion-exchange column purified and shipped in a 2D barcoded Matrix tube containing 10ug of transfection-ready, dried plasmid DNA (reconstitute with 100 ul of water).

Reconstitution Method:

1. Centrifuge at 5,000xg for 5min.
2. Carefully open the tube and add 100ul of sterile water to dissolve the DNA.
3. Close the tube and incubate for 10 minutes at room temperature.
4. Briefly vortex the tube and then do a quick spin (less than 5000xg) to concentrate the liquid at the bottom.
5. Store the suspended plasmid at -20°C. The DNA is stable for at least one year from date of shipping when stored at -20°C.

RefSeq: [NM_001284248.1](#), [NP_001271177.1](#)

RefSeq Size: 4332 bp

RefSeq ORF: 3366 bp

Locus ID: 15184

Cytogenetics: 11 D

MW: 122.4 kDa